

報 告

婦人科腫瘍委員会

第54回治療年報

2006年に治療した子宮頸癌，子宮体癌，卵巣悪性・境界悪性腫瘍の5年治療成績について

婦人科腫瘍委員会の第54回治療年報(2006年治療開始例)の報告をいたします。

なお，第49回治療年報より，従来の直接法最小生存率*による方法からKaplan-Meier法に変更しました。追跡不能症例(Lost to follow-up)が多いと治療成績の信頼性が低下するため，予後追跡報告で追跡不能症例が20%を超える施設のデータは治療成績の解析には用いないこととしています。予後解析に使用された施設は，施設名の左に○がつけてあります。

加盟機関の先生方のご苦勞に感謝申し上げます，また婦人科腫瘍委員会の全委員に御礼申し上げます。今後とも何卒よろしくお願ひ申し上げます。

婦人科腫瘍委員会
委員長 青木 大輔

子宮頸癌治療成績

Table A	5年後の治療転帰
Table 1~8	項目別成績
Figure 1~10	予後5年生存率

子宮体癌治療成績

Table A	5年後の治療転帰
Table 1~8	項目別成績
Figure 1~10	予後5年生存率

卵巣悪性腫瘍治療成績

Table A	5年後の治療転帰
Table 1~6	項目別成績
Figure 1~9	予後5年生存率

卵巣境界悪性腫瘍治療成績

Table A	5年後の治療転帰
Table 1~6	項目別成績

*最小生存率：直接法とは観察開始時点から一定の年限を経過した症例について生存者数を観察対象者数で割った値である。この場合，消息不明例の取扱いによって3種類の生存率が計算される。すなわち，消息不明例をすべて死亡とみなして計算する最小生存率，すべて生存とみなして計算する最大生存率，消息不明例を対象から除外して計算する推定(概算)生存率の3種類である。

(日本癌治療学会・癌規約総論，金原出版，1991より抜粋)

本報告に関するお問い合わせは婦人科腫瘍委員会をお願いいたします。

	A	B	C	D	E	F	G	H	I	J	K
	Institution	Total No. Treated	no description	Alive with no Evidence of the Disease	Alive with Carcinoma	Alive with or without Carcinoma Unknown	Died of Carcinoma	Died of Other Malignant Tumor	Died of Intercurrent Disease	Cause of Death Unknown	Lost to follow-up
	130038 TOKYO METRO. BOKUTOH HOSP.	11	11	0	0	0	0	0	0	0	0
○	130044 NTT MED. CENTER TOKYO	1	0	1	0	0	0	0	0	0	0
○	130046 SHOWA UNIV.	21	0	15	0	0	5	0	1	0	0
○	130050 TOHO UNIV. OMORI MED. CENTER	16	0	11	0	0	2	0	0	0	3
○	130055 RED CROSS MED. CENTER	12	0	9	1	0	1	0	0	0	1
○	130063 KOSEI CENTRAL HOSP.	1	0	1	0	0	0	0	0	0	0
○	130077 KEIO UNIV.	99	0	78	3	0	10	0	2	0	6
	130080 NATIONAL CENTER FOR GLOBAL HEALTH AND MED.	4	4	0	0	0	0	0	0	0	0
	130081 TOKYO WOMENS MED. UNIV.	16	16	0	0	0	0	0	0	0	0
	130085 KOSEI HOSP.	5	3	0	0	0	2	0	0	0	0
	130092 TEIKYO UNIV.	24	0	13	2	0	3	0	1	0	5
	130095 NIHON UNIV.	27	21	0	0	0	4	0	0	1	1
	130099 MUSASHINO RED CROSS HOSP.	32	32	0	0	0	0	0	0	0	0
○	130112 MACHIDA MUNI. HOSP.	5	0	5	0	0	0	0	0	0	0
	130116 JIKEI UNIV. 3RD HOSP.	31	7	18	0	0	4	0	0	0	2
	130119 NIPPON MED. SCH. TAMA NAGAYAMA HOSP.	11	7	0	0	0	3	0	0	0	1
○	130122 TOKYO METRO. KOMAGOME HOSP.	40	0	21	1	2	8	0	2	0	6
	130124 KYOUNDO HOSP.	10	9	0	0	0	0	0	0	0	1
○	130125 CANCER INST. HOSP.	118	0	83	6	1	16	0	0	0	12
	130135 TAMA-NAMBU CHIKI HOSP.	4	4	0	0	0	0	0	0	0	0
	140001 KAWASAKI MUNI. HOSP.	26	26	0	0	0	0	0	0	0	0
○	140006 NIPPON MED. SCH. MUSASHI KOSUGI HOSP.	11	0	6	1	0	3	0	0	0	1
○	140008 KANTO ROSAI HOSP.	1	0	1	0	0	0	0	0	0	0
○	140012 ST. MARIANNA UNIV.	45	0	24	0	0	13	0	0	0	8
	140016 YOKOHAMA ROSAI HOSP.	9	0	2	1	1	3	0	0	0	2
○	140017 SHOWA UNIV. FUJIGAOKA HOSP.	10	0	5	0	1	2	1	0	0	1
	140020 KITAZATO UNIV.	61	41	0	0	0	15	0	0	0	5
○	140029 YOKOHAMA CITY UNIV.	48	0	24	0	0	19	0	2	0	3
	140030 YOKOHAMA MINAMI KYOSAI HOSP.	4	0	3	0	0	1	0	0	0	0
○	140054 ISEHARA KYODO HOSP.	1	0	1	0	0	0	0	0	0	0
○	140055 TOKAI UNIV.	25	0	8	0	0	12	0	0	0	5
○	140059 KANAGAWA CANCER CENTER	86	0	60	7	0	15	0	1	3	0
	140061 YOKOHAMA CITY UNIV. MED. CENTER	11	0	5	0	0	3	0	0	0	3
○	150002 YAMANASHI PREF. CENTRAL HOSP.	27	0	24	1	0	2	0	0	0	0
○	150006 UNIV. OF YAMANASHI	20	0	17	0	0	1	0	0	0	2
	160001 NAGANO RED CROSS HOSP.	19	9	0	0	0	4	0	0	0	6
	160006 SHINSHU UNIV.	32	1	11	2	1	9	0	1	1	6
	170006 FUJI CITY GENERAL HOSP.	8	2	0	0	0	3	0	1	0	2
	170009 SHIZUOKA GENERAL HOSP.	25	19	0	0	0	3	0	0	0	3
	180001 NAGAOKA RED CROSS HOSP.	19	0	5	0	0	4	0	0	0	10
	180010 NIIGATA CANCER CENTER HOSP.	49	11	22	0	0	14	0	2	0	0
○	190001 TOYAMA UNIV.	14	0	9	0	0	5	0	0	0	0
	190002 TOYAMA RED CROSS HOSP.	3	0	2	0	0	0	0	0	0	1
○	200001 KANAZAWA MED. UNIV.	6	0	4	0	0	2	0	0	0	0
○	200002 KANAZAWA MED. CENTER	9	0	3	2	0	4	0	0	0	0
	200004 KANAZAWA UNIV.	20	0	12	1	0	1	0	0	0	6
	210002 FUKUI PREF. HOSP.	9	7	0	0	0	2	0	0	0	0
	210003 FUKUI UNIV.	19	19	0	0	0	0	0	0	0	0
	210004 FUKUI RED CROSS HOSP.	5	4	0	0	0	1	0	0	0	0
○	220002 GIFU UNIV.	37	0	22	1	1	7	1	0	0	5
○	220006 OGAKI MUNI. HOSP.	45	0	36	1	0	7	0	1	0	0
○	230001 TOYOHASHI MUNI. HOSP.	20	0	12	4	1	3	0	0	0	0
○	230014 RED CROSS NAGOYA DAIICHI HOSP.	18	0	12	1	0	5	0	0	0	0
	230024 NAGOYA MED. CENTER	9	9	0	0	0	0	0	0	0	0
	230031 NAGOYA UNIV.	48	48	0	0	0	0	0	0	0	0
○	230034 NAGOYA CITY UNIV.	21	0	13	0	0	6	0	0	0	2
	230035 FUJITA HEALTH UMIN.	22	4	11	0	0	4	0	0	0	3
○	230040 AICHI MED. UNIV.	17	0	14	1	0	2	0	0	0	0
○	230052 AICHI CANCER CENTER	72	0	54	6	0	11	0	1	0	0
	240002 MIE PREF. GENERAL MED. CENTER	23	3	13	0	0	3	0	0	0	4

A		B	C	D	E	F	G	H	I	J	K
Institution		Total No. Treated	no description	Alive with no Evidence of the Disease	Alive with Carcinoma	Alive with or without Carcinoma Unknown	Died of Carcinoma	Died of Other Malignant Tumor	Died of Intercurrent Disease	Cause of Death Unknown	Lost to follow-up
○ 390003	KOCHI HEALTH SCIENCES CENTER	10	0	6	0	1	1	0	1	0	1
○ 390006	KOCHI UNIV.	10	0	4	0	0	4	0	1	0	1
○ 400008	UNIV. OCCUPATIONAL & ENVIRONMENTAL HEALTH	36	0	20	2	0	11	0	0	0	3
○ 400010	KYUSHU MED. CENTER	9	0	4	0	0	2	0	0	0	3
○ 400012	KYUSHU UNIV.	47	0	32	6	0	7	0	0	0	2
○ 400013	FUKUOKA UNIV.	4	0	2	0	0	2	0	0	0	0
○ 400014	FUKUOKA RED CROSS HOSP.	6	0	1	0	0	4	0	0	0	1
○ 400020	KURUME UNIV.	55	0	38	0	0	8	0	1	0	8
○ 400040	KYUSHU CANCER CENTER	60	0	46	3	0	6	0	2	0	3
○ 410005	SAGA UNIV.	40	0	22	0	0	8	0	1	0	9
○ 420001	NAGASAKI MUNI. HOSP.	6	0	3	1	0	2	0	0	0	0
○ 420002	NAGASAKI UNIV.	21	0	10	0	0	7	0	0	0	4
○ 420003	RED CROSS NAGASAKI ATOMIC BOMB HOSP.	4	3	0	0	0	1	0	0	0	0
○ 420006	SASEBO KYOSAI HOSP.	23	0	14	1	0	2	0	0	0	6
○ 430001	KUMAMOTO MED. CENTER	35	0	22	1	0	11	0	0	0	1
○ 430002	KUMAMOTO UNIV.	66	0	48	2	0	5	0	0	0	11
○ 430003	KUMAMOTO CITY HOSP.	26	0	9	2	0	8	0	0	0	7
○ 440002	OITA PREF. HOSP.	25	0	17	0	0	5	0	0	0	3
○ 440005	OITA UNIV.	15	0	10	1	0	1	0	1	0	2
○ 450001	MIYAZAKI PREF. HOSP.	41	0	19	1	0	9	0	1	0	11
○ 450005	MIYAZAKI UNIV.	17	11	0	0	0	6	0	0	0	0
○ 460001	KAGOSHIMA UNIV.	27	19	0	0	0	5	0	0	0	3
○ 460004	KAGOSHIMA CITY HOSP.	49	0	27	0	0	8	0	1	1	12
○ 470008	RYUKYU UNIV.	84	0	60	2	2	18	0	0	0	2
○ 470010	OKINAWA PREF. CHUBU HOSP.	20	0	6	0	0	9	1	1	0	3
Total		4750	836	2341	129	35	813	16	47	13	520

Table 1. No. of Patients by Stage and Age

Age		~19		20~29		30~39		40~49		50~59		60~69		70~79		80~		Total	
		No.	%	No.	%	No.	%	No.	%	No.	%	No.	%	No.	%	No.	%	No.	%
I	A1	1	0.0	62	1.3	239	5.0	197	4.2	68	1.4	46	1.0	26	0.6	8	0.2	647	13.6
	A2	0	0.0	3	0.1	24	0.5	22	0.5	7	0.2	7	0.2	4	0.1	0	0.0	67	1.4
	A not cl.	0	0.0	6	0.1	13	0.3	23	0.5	14	0.3	5	0.1	4	0.1	2	0.0	67	1.4
	B1	1	0.0	57	1.2	345	7.3	331	7.0	283	6.0	155	3.3	85	1.8	41	0.9	1298	27.3
	B2	0	0.0	14	0.3	107	2.3	117	2.5	86	1.8	32	0.7	16	0.3	5	0.1	377	7.9
	B not cl.	0	0.0	0	0.0	17	0.4	15	0.3	12	0.3	9	0.2	7	0.2	5	0.1	65	1.4
	not cl.	0	0.0	1	0.0	4	0.1	3	0.1	4	0.1	3	0.1	2	0.0	2	0.0	19	0.4
	total	2	0.0	143	3.0	749	15.8	708	14.9	474	10.0	257	5.4	144	3.0	63	1.3	2540	53.5
II	A	0	0.0	7	0.2	31	0.7	46	1.0	77	1.6	61	1.3	58	1.2	26	0.6	306	6.4
	B	0	0.0	12	0.3	102	2.2	149	3.1	230	4.8	173	3.6	112	2.4	51	1.1	829	17.5
	not cl.	0	0.0	0	0.0	0	0.0	0	0.0	0	0.0	0	0.0	0	0.0	0	0.0	0	0.0
	total	0	0.0	19	0.4	133	2.8	195	4.1	307	6.5	234	4.9	170	3.6	77	1.6	1135	23.9
III	A	0	0.0	0	0.0	4	0.1	7	0.2	10	0.2	9	0.2	15	0.3	6	0.1	51	1.1
	B	0	0.0	3	0.1	33	0.7	86	1.8	152	3.2	129	2.7	137	2.9	85	1.8	625	13.2
	not cl.	0	0.0	0	0.0	0	0.0	0	0.0	0	0.0	1	0.0	0	0.0	0	0.0	1	0.0
	total	0	0.0	3	0.1	37	0.8	93	2.0	162	3.4	139	2.9	152	3.2	91	1.9	677	14.3
IV	A	0	0.0	2	0.0	6	0.1	22	0.5	38	0.8	38	0.8	30	0.6	20	0.4	156	3.3
	B	0	0.0	3	0.1	15	0.3	40	0.8	74	1.6	50	1.1	38	0.8	12	0.3	232	4.9
	not cl.	0	0.0	0	0.0	0	0.0	1	0.0	5	0.1	3	0.1	1	0.0	0	0.0	10	0.2
	total	0	0.0	5	0.1	21	0.4	63	1.3	117	2.5	91	1.9	69	1.5	32	0.7	398	8.4
Total		2	0.0	170	3.6	940	19.8	1059	22.3	1060	22.3	721	15.2	535	11.3	263	5.5	4750	

Table 2. Type of Treatment

Treatment FIGO Stage		Surgery															
		Alone		Rad.		Chem.Immun. Hormon		Other		Rad. Chem.Immun. Hormon		Rad. Other		Chem.Immun. Hormon, Other		Rad. Chem.Immun. Hormon, Other	
		No.	%	No.	%	No.	%	No.	%	No.	%	No.	%	No.	%	No.	%
I	A1	624	13.1	2	0.0	4	0.1	0	0.0	0	0.0	0	0.0	1	0.0	0	0.0
	A2	60	1.3	5	0.1	0	0.0	0	0.0	1	0.0	0	0.0	0	0.0	0	0.0
	A not cl.	62	1.3	2	0.0	1	0.0	0	0.0	0	0.0	0	0.0	0	0.0	0	0.0
	B1	717	15.1	140	3.0	178	3.8	0	0.0	133	2.8	0	0.0	0	0.0	0	0.0
	B2	68	1.4	60	1.3	106	2.2	0	0.0	93	2.0	0	0.0	1	0.0	0	0.0
	B not cl.	20	0.4	8	0.2	17	0.4	0	0.0	13	0.3	0	0.0	0	0.0	0	0.0
	not cl.	18	0.4	0	0.0	0	0.0	0	0.0	0	0.0	0	0.0	0	0.0	0	0.0
total	1569	33.0	217	4.6	306	6.4	0	0.0	240	5.1	0	0.0	2	0.0	0	0.0	
II	A	58	1.2	44	0.9	55	1.2	0	0.0	53	1.1	0	0.0	0	0.0	0	0.0
	B	43	0.9	97	2.0	150	3.2	0	0.0	171	3.6	1	0.0	3	0.1	0	0.0
	not cl.	0	0.0	0	0.0	0	0.0	0	0.0	0	0.0	0	0.0	0	0.0	0	0.0
	total	101	2.1	141	3.0	205	4.3	0	0.0	224	4.7	1	0.0	3	0.1	0	0.0
III	A	0	0.0	0	0.0	6	0.1	0	0.0	4	0.1	0	0.0	0	0.0	0	0.0
	B	2	0.0	2	0.0	22	0.5	0	0.0	26	0.6	0	0.0	0	0.0	0	0.0
	not cl.	0	0.0	0	0.0	1	0.0	0	0.0	0	0.0	0	0.0	0	0.0	0	0.0
	total	2	0.0	2	0.0	29	0.6	0	0.0	30	0.6	0	0.0	0	0.0	0	0.0
IV	A	1	0.0	1	0.0	3	0.1	0	0.0	6	0.1	0	0.0	0	0.0	0	0.0
	B	1	0.0	3	0.1	13	0.3	0	0.0	7	0.2	0	0.0	0	0.0	0	0.0
	not cl.	0	0.0	0	0.0	1	0.0	0	0.0	0	0.0	0	0.0	0	0.0	0	0.0
	total	2	0.0	4	0.1	17	0.4	0	0.0	13	0.3	0	0.0	0	0.0	0	0.0
Total	1674	35.2	364	7.7	557	11.7	0	0.0	507	10.7	1	0.0	5	0.1	0	0.0	

Treatment FIGO Stage		Radiation								Chem.Immun. Hormon				Others				Total	
		Alone		Chem.Immun. Hormon		Other		Chem.Immun. Hormon, Other		Alone		Other		Alone		Other			
		No.	%	No.	%	No.	%	No.	%	No.	%	No.	%	No.	%	No.	%		
I	A1	4	0.1	0	0.0	0	0.0	0	0.0	1	0.0	0	0.0	11	0.2	0	0.0	647	13.6
	A2	0	0.0	1	0.0	0	0.0	0	0.0	0	0.0	0	0.0	0	0.0	0	0.0	67	1.4
	A not cl.	2	0.0	0	0.0	0	0.0	0	0.0	0	0.0	0	0.0	0	0.0	0	0.0	67	1.4
	B1	105	2.2	20	0.4	0	0.0	0	0.0	3	0.1	0	0.0	2	0.0	0	0.0	1298	27.3
	B2	17	0.4	30	0.6	0	0.0	0	0.0	2	0.0	0	0.0	0	0.0	0	0.0	377	7.9
	B not cl.	7	0.2	0	0.0	0	0.0	0	0.0	0	0.0	0	0.0	0	0.0	0	0.0	65	1.4
	not cl.	1	0.0	0	0.0	0	0.0	0	0.0	0	0.0	0	0.0	0	0.0	0	0.0	19	0.4
total	136	2.9	51	1.1	0	0.0	0	0.0	6	0.1	0	0.0	13	0.3	0	0.0	2540	53.5	
II	A	63	1.3	27	0.6	0	0.0	0	0.0	6	0.1	0	0.0	0	0.0	0	0.0	306	6.4
	B	133	2.8	218	4.6	1	0.0	1	0.0	8	0.2	1	0.0	2	0.0	0	0.0	829	17.5
	not cl.	0	0.0	0	0.0	0	0.0	0	0.0	0	0.0	0	0.0	0	0.0	0	0.0	0	0.0
	total	196	4.1	245	5.2	1	0.0	1	0.0	14	0.3	1	0.0	2	0.0	0	0.0	1135	23.9
III	A	14	0.3	25	0.5	0	0.0	0	0.0	2	0.0	0	0.0	0	0.0	0	0.0	51	1.1
	B	219	4.6	334	7.0	1	0.0	4	0.1	11	0.2	1	0.0	3	0.1	0	0.0	625	13.2
	not cl.	0	0.0	0	0.0	0	0.0	0	0.0	0	0.0	0	0.0	0	0.0	0	0.0	1	0.0
	total	233	4.9	359	7.6	1	0.0	4	0.1	13	0.3	1	0.0	3	0.1	0	0.0	677	14.3
IV	A	67	1.4	71	1.5	0	0.0	0	0.0	3	0.1	1	0.0	3	0.1	0	0.0	156	3.3
	B	52	1.1	112	2.4	1	0.0	2	0.0	36	0.8	2	0.0	3	0.1	0	0.0	232	4.9
	not cl.	3	0.1	5	0.1	0	0.0	0	0.0	1	0.0	0	0.0	0	0.0	0	0.0	10	0.2
	total	122	2.6	188	4.0	1	0.0	2	0.0	40	0.8	3	0.1	6	0.1	0	0.0	398	8.4
Total	687	14.5	843	17.8	3	0.1	7	0.2	73	1.5	5	0.1	24	0.5	0	0.0	4750		

Table 3. 5-Year Results, Treatment Started in 2006

5-year result	No. of patients	%
Alive with no Evidence of the Disease	1826	67.7
Alive with Carcinoma	108	4.0
Alive with or without Carcinoma Unknown	21	0.8
Died of Carcinoma	548	20.3
Died of Other Malignant Tumor	12	0.4
Died of Intercurrent Disease	34	1.3
Cause of Death Unknown	6	0.2
Lost to follow-up	144	5.3
Total	2699	

Table 4. 5-Year Survival by Stage, Treatment Started in 2006

FIGO Stage		Patients treated		5-year survival		Lost to follow-up
		No.		%		
I	A1	332	1401	99.0	92.9	73/1401 (5.2%)
	A2	35		100.0		
	A not cl.	28		-		
	B1	757		93.3		
	B2	213		80.0		
	B not cl.	34		-		
not cl.	2	-				
II	A	192	662	81.4	74.6	38/662 (5.7%)
	B	470		71.9		
	not cl.	0		-		
III	A	30	414	53.4	55.3	26/414 (6.3%)
	B	384		55.5		
	not cl.	0		-		
IV	A	89	222	27.9	24.3	7/222 (3.2%)
	B	131		21.8		
	not cl.	2		-		
Total		2699		77.1		

Table 5. 5-Year Survival by Histological Type, Treatment Started in 2006

Histological type	Patients treated		5-year survival
	No.	%	%
Squamous cell carcinoma	2000	74.1	78.1
Adenocarcinoma	482	17.9	76.9
Adenosquamous carcinoma	135	5.0	78.9
Others	81	3.0	53.9
No description	1	0.0	-

Table 6. 5-Year Survival by Stage and Histological Type, Treatment Started in 2006

FIGO Stage	Histology type	Patients treated		5-year survival
		No.	%	%
I	Squamous cell carcinoma	961	68.6	94.8
	Adenocarcinoma	323	23.1	89.2
	Adenosquamous carcinoma	82	5.9	89.0
	Others	35	2.5	82.7
	No description	0	0.0	-
II	Squamous cell carcinoma	523	79.0	76.6
	Adenocarcinoma	88	13.3	69.8
	Adenosquamous carcinoma	31	4.7	68.3
	Others	19	2.9	57.0
	No description	1	0.2	-
III	Squamous cell carcinoma	340	82.1	58.7
	Adenocarcinoma	42	10.1	40.0
	Adenosquamous carcinoma	16	3.9	62.5
	Others	16	3.9	18.8
	No description	0	0.0	-
IV	Squamous cell carcinoma	176	79.3	27.5
	Adenocarcinoma	29	13.1	11.1
	Adenosquamous carcinoma	6	2.7	33.3
	Others	11	5.0	9.1
	No description	0	0.0	-

Table 7. 5-Year Survival by First Therapy, Treatment Started in 2006

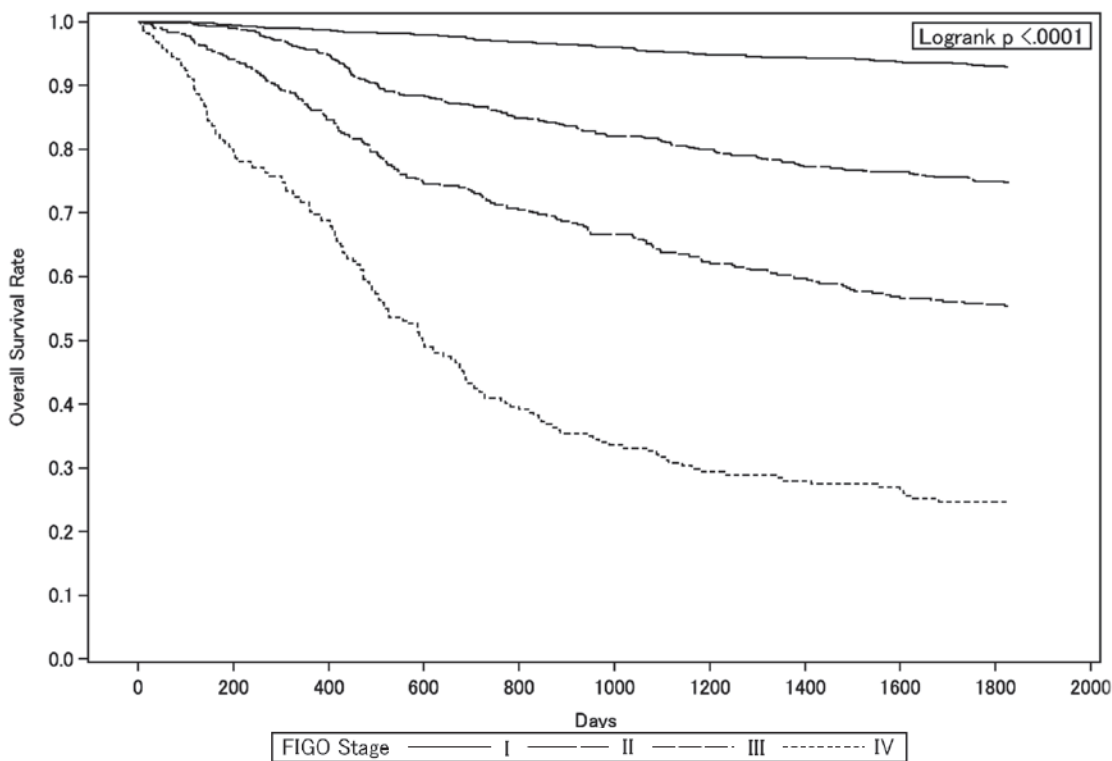
FIGO Stage	Therapy	Patients treated		5-year survival
		No.	%	%
I	Surgery	1241	88.6	94.1
	Radiation	83	5.9	85.4
	(Radiation alone)	10	(0.7)	(90.0)
	Chemotherapy	77	5.5	81.6
	Others	0	0.0	-
II	Surgery	259	39.1	82.7
	Radiation	255	38.5	69.0
	(Radiation alone)	26	(3.9)	(56.0)
	Chemotherapy	144	21.8	69.2
	Others	4	0.6	100.0
III	Surgery	7	1.7	42.9
	Radiation	327	79.0	56.0
	(Radiation alone)	38	(9.2)	(30.3)
	Chemotherapy	79	19.1	54.5
	Others	1	0.2	0.0
IV	Surgery	12	5.4	58.3
	Radiation	152	68.5	28.3
	(Radiation alone)	36	(16.2)	(14.3)
	Chemotherapy	55	24.8	9.1
	Others	3	1.4	0.0

Table 8. 5-Year Survival by TNM Classification, Treatment Started in 2006

TNM Stage			Patients treated		5-year survival
			No.	%	%
T1a1	N0	M0	279	10.9	99.2
T1a2	N0	M0	33	1.3	100.0
T1b1	N0	M0	704	27.5	94.2
T1b2	N0	M0	160	6.2	84.7
T2a	N0	M0	164	6.4	83.3
T2b	N0	M0	310	12.1	77.6
T3a	N0	M0	18	0.7	57.6
T3b	N0	M0	191	7.5	59.4
T4	N0	M0	38	1.5	38.7
T1a1	N1	M0	2	0.1	100.0
T1b1	N1	M0	49	1.9	83.0
T1b2	N1	M0	44	1.7	63.1
T2a	N1	M0	26	1.0	71.9
T2b	N1	M0	134	5.2	61.6
T3a	N1	M0	11	0.4	54.5
T3b	N1	M0	152	5.9	55.0
T4	N1	M0	37	1.4	25.1
Any T	Any N	M1	211	8.2	29.2

Figure 1.

Kaplan-Meier Estimated Overall Survival Curves of Cervical Cancer Patients by FIGO Stage, Treatment Started in 2006

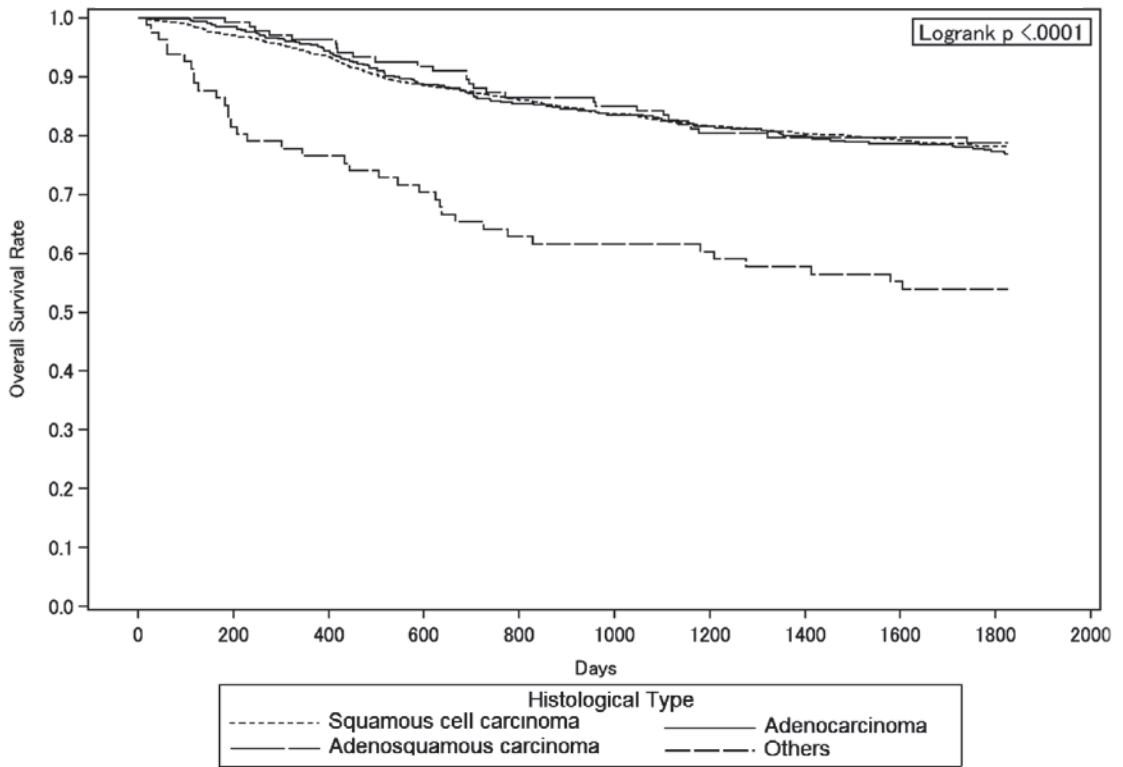


Test of Equality over Strata			
Test	Chi-Square	DF	Pr > Chi-Square
Log-rank	923.5427	3	<.0001
Wilcoxon	927.8512	3	<.0001
-2Log (LR)	678.5135	3	<.0001

Adjustment for Multiple Comparisons for the Log-rank Test				
Strata Comparison		Chi-Square	p-Values	
FIGO Stage	FIGO Stage		Raw	Tukey-Kramer
I	II	163.5000	<.0001	<.0001
I	III	397.8000	<.0001	<.0001
I	IV	706.2000	<.0001	<.0001
II	III	32.4782	<.0001	<.0001
II	IV	91.6134	<.0001	<.0001
III	IV	11.3363	0.0008	0.0042

Figure 2.

Kaplan-Meier Estimated Overall Survival Curves of Cervical Cancer Patients by Histological Type, Treatment Started in 2006

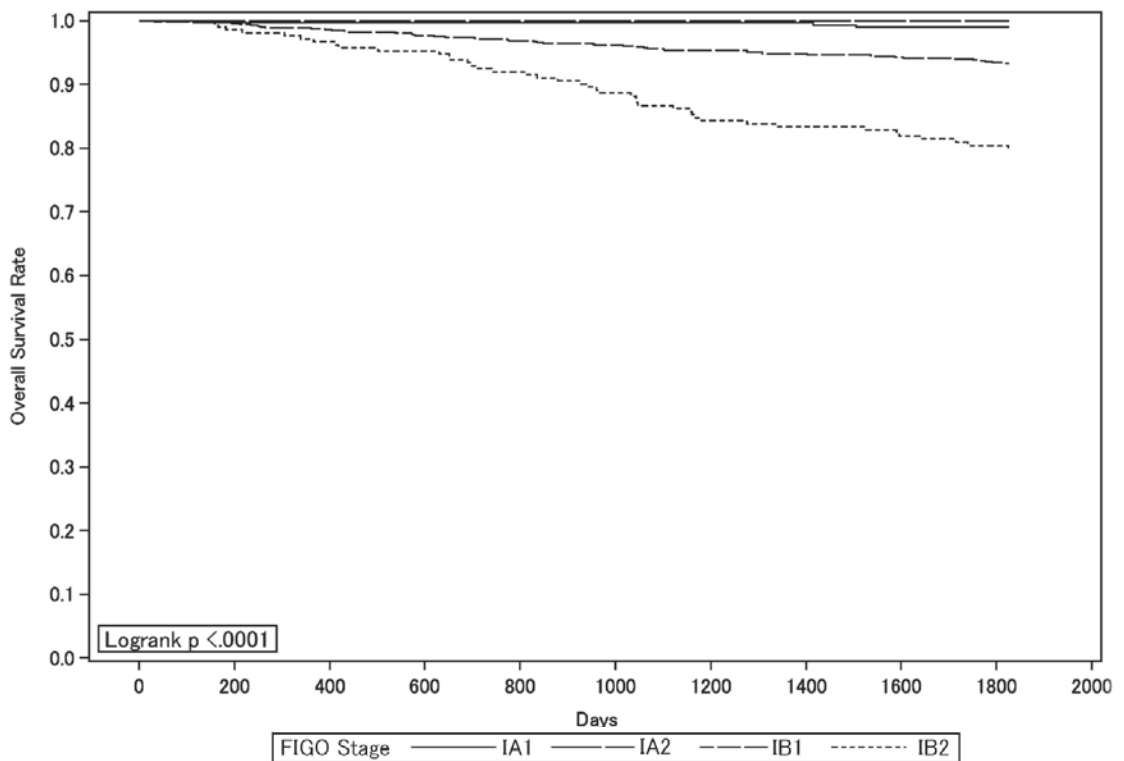


Test of Equality over Strata			
Test	Chi-Square	DF	Pr > Chi-Square
Log-rank	36.3027	3	<.0001
Wilcoxon	40.2794	3	<.0001
-2Log (LR)	26.6616	3	<.0001

Adjustment for Multiple Comparisons for the Log-rank Test				
Strata Comparison		Chi-Square	p-Values	
Histological Type	Histological Type		Raw	Tukey-Kramer
Adenocarcinoma	Adenosquamous carcinoma	0.0645	0.7995	0.9943
Adenocarcinoma	Others	4.7420	0.0294	0.1294
Adenocarcinoma	Squamous cell carcinoma	1.0391	0.3080	0.7381
Adenosquamous carcinoma	Others	14.4702	0.0001	0.0008
Adenosquamous carcinoma	Squamous cell carcinoma	1.4444	0.2294	0.6257
Others	Squamous cell carcinoma	11.8092	0.0006	0.0033

Figure 3.

Kaplan-Meier Estimated Overall Survival Curves of Cervical Cancer Patients by FIGO Stage I Substage, Treatment Started in 2006

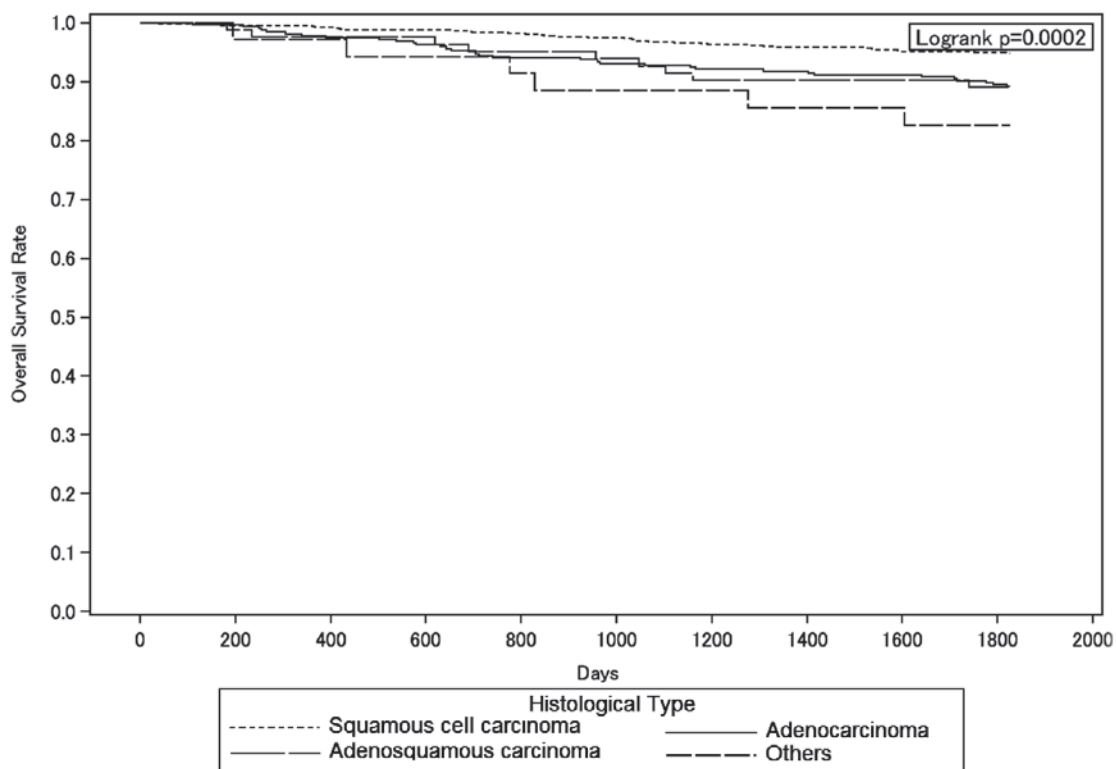


Test of Equality over Strata			
Test	Chi-Square	DF	Pr > Chi-Square
Log-rank	74.2685	3	<.0001
Wilcoxon	73.8539	3	<.0001
-2Log (LR)	69.3802	3	<.0001

Adjustment for Multiple Comparisons for the Log-rank Test				
Strata Comparison		Chi-Square	p-Values	
FIGO Stage	FIGO Stage		Raw	Tukey-Kramer
1A1	1A2	15.2240	<.0001	0.0006
1A1	1B1	3.8876	0.0486	0.1987
1A1	1B2	62.9406	<.0001	<.0001
1A2	1B1	0.1177	0.7315	0.9861
1A2	1B2	59.0859	<.0001	<.0001
1B1	1B2	19.8106	<.0001	<.0001

Figure 4.

Kaplan-Meier Estimated Overall Survival Curves of Stage I Cervical Cancer Patients by Histological Type, Treatment Started in 2006

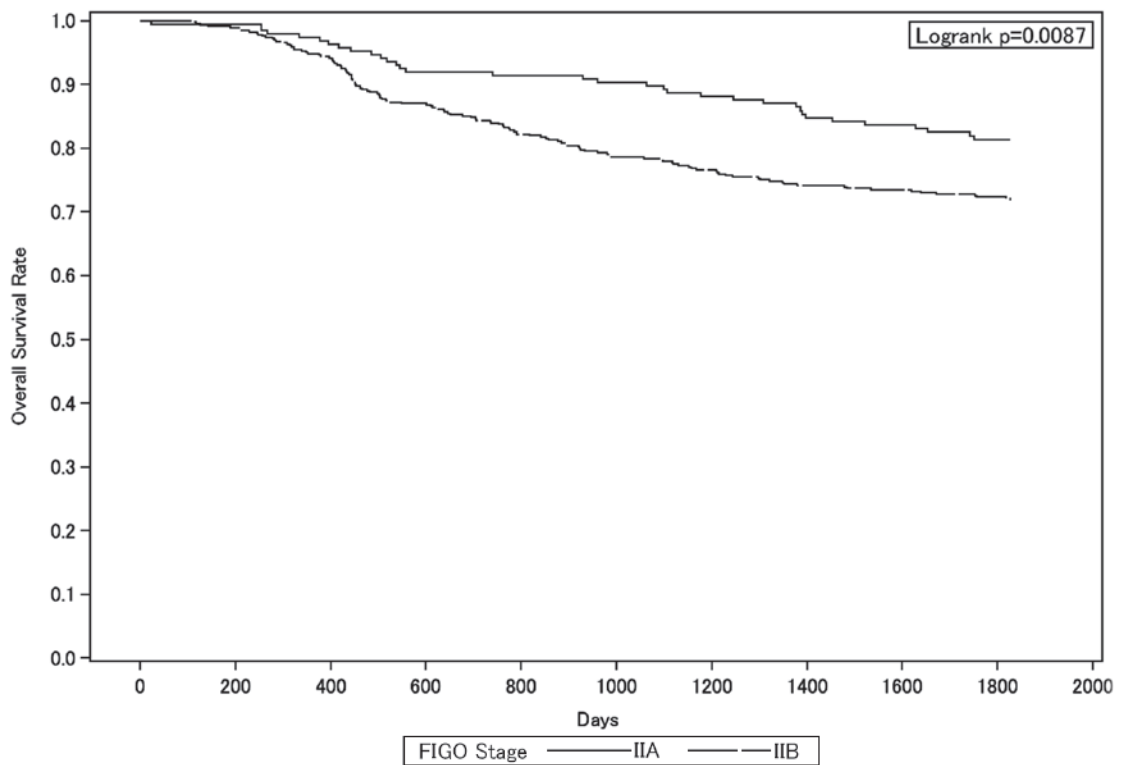


Test of Equality over Strata			
Test	Chi-Square	DF	Pr > Chi-Square
Log-rank	19.8123	3	0.0002
Wilcoxon	20.0618	3	0.0002
-2Log (LR)	17.3202	3	0.0006

Adjustment for Multiple Comparisons for the Log-rank Test				
Strata Comparison		Chi-Square	p-Values	
Histological Type	Histological Type		Raw	Tukey-Kramer
Adenocarcinoma	Adenosquamous carcinoma	3.0711	0.0797	0.2966
Adenocarcinoma	Others	3.4367	0.0638	0.2482
Adenocarcinoma	Squamous cell carcinoma	14.1850	0.0002	0.0010
Adenosquamous carcinoma	Others	0.0206	0.8858	0.9989
Adenosquamous carcinoma	Squamous cell carcinoma	14.6544	0.0001	0.0007
Others	Squamous cell carcinoma	19.7353	<.0001	<.0001

Figure 5.

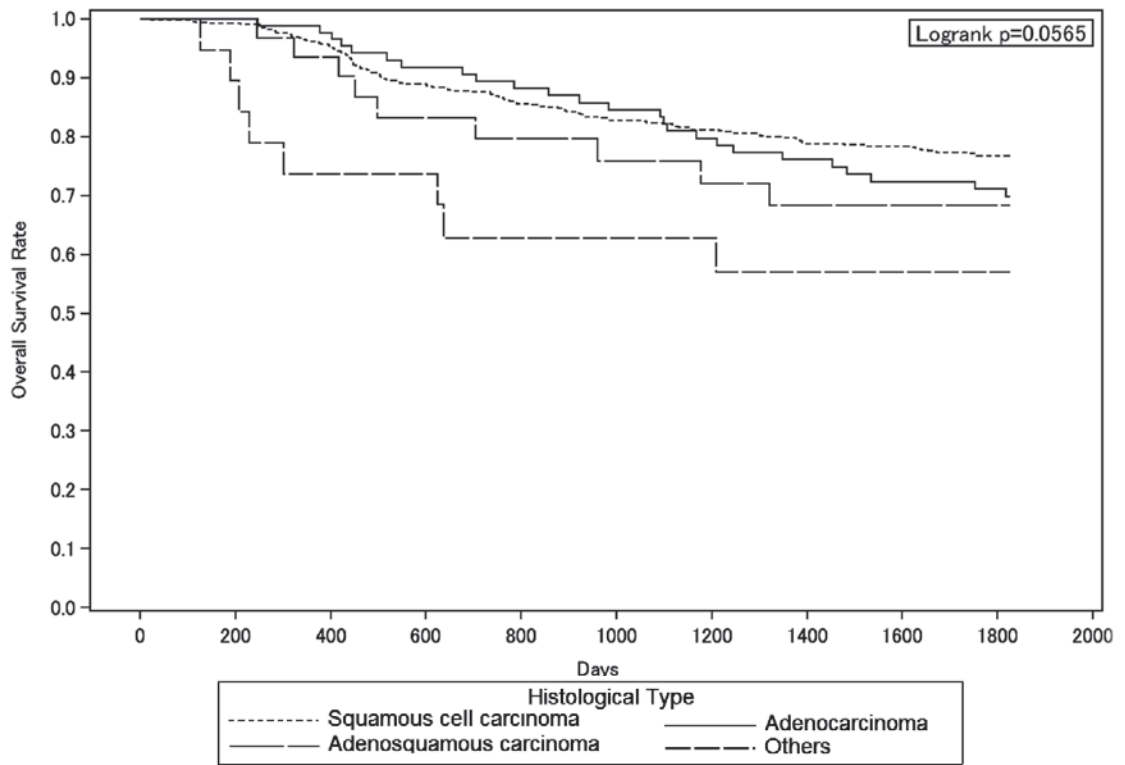
Kaplan-Meier Estimated Overall Survival Curves of Cervical Cancer Patients by FIGO Stage II Substage, Treatment Started in 2006



Test of Equality over Strata			
Test	Chi-Square	DF	Pr > Chi-Square
Log-rank	6.8851	1	0.0087
Wilcoxon	7.5740	1	0.0059
-2Log (LR)	7.4979	1	0.0062

Figure 6.

Kaplan-Meier Estimated Overall Survival Curves of Stage II Cervical Cancer Patients by Histological Type, Treatment Started in 2006

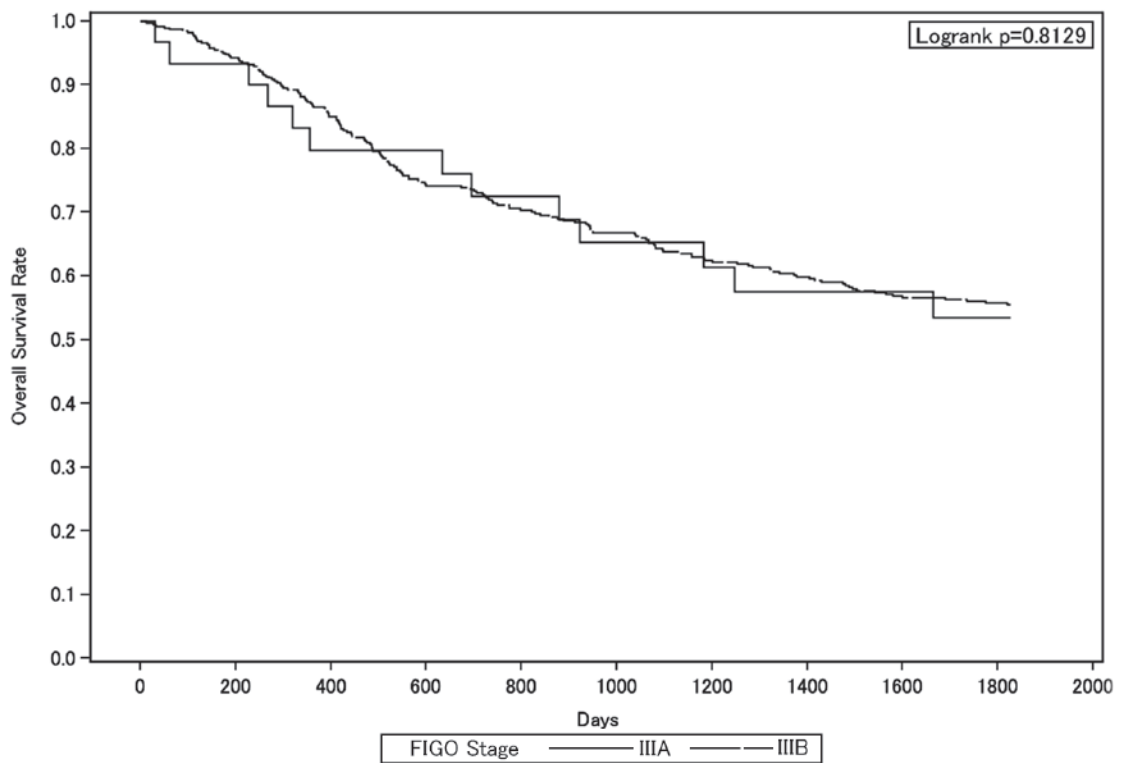


Test of Equality over Strata			
Test	Chi-Square	DF	Pr > Chi-Square
Log-rank	7.5430	3	0.0565
Wilcoxon	8.8200	3	0.0318
-2Log (LR)	6.0757	3	0.1080

Adjustment for Multiple Comparisons for the Log-rank Test				
Strata Comparison		Chi-Square	p-Values	
Histological Type	Histological Type		Raw	Tukey-Kramer
Adenocarcinoma	Adenosquamous carcinoma	0.0604	0.8058	0.9948
Adenocarcinoma	Others	0.0356	0.8504	0.9976
Adenocarcinoma	Squamous cell carcinoma	2.3740	0.1234	0.4130
Adenosquamous carcinoma	Others	0.4624	0.4965	0.9047
Adenosquamous carcinoma	Squamous cell carcinoma	3.5796	0.0585	0.2314
Others	Squamous cell carcinoma	6.1002	0.0135	0.0647

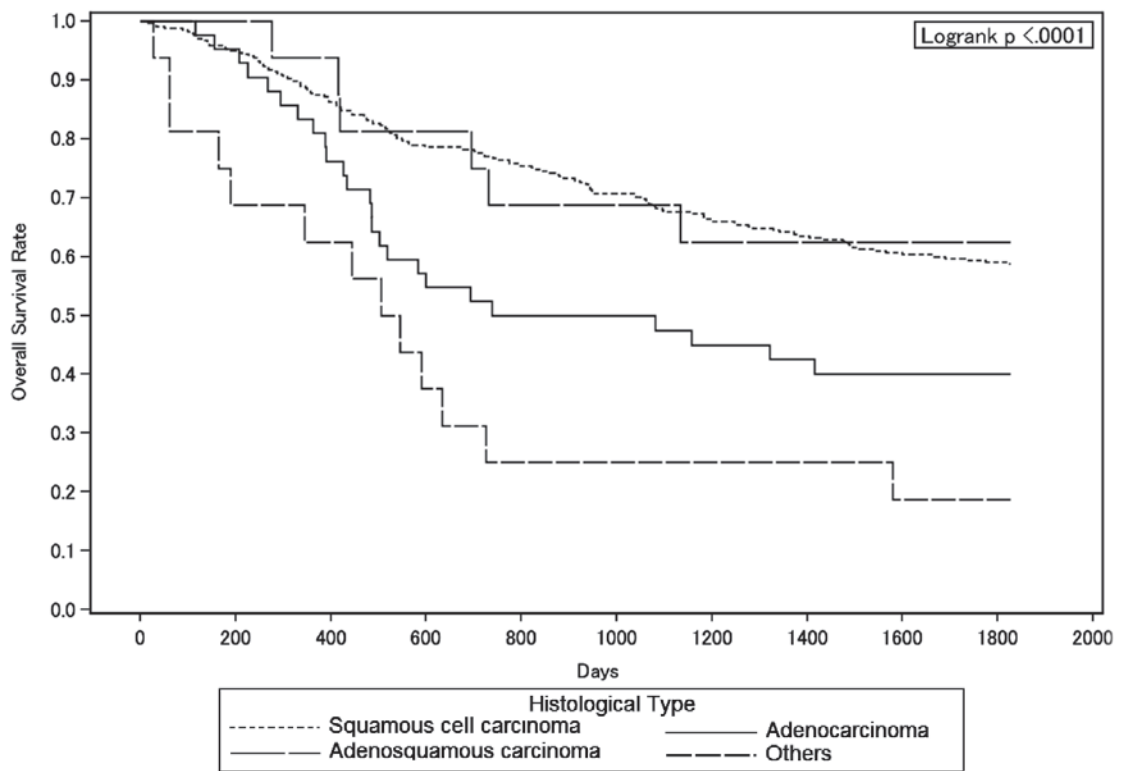
Figure 7.

Kaplan-Meier Estimated Overall Survival Curves of Cervical Cancer Patients by FIGO Stage III Substage, Treatment Started in 2006



Test of Equality over Strata			
Test	Chi-Square	DF	Pr > Chi-Square
Log-rank	0.0560	1	0.8129
Wilcoxon	0.0726	1	0.7875
-2Log (LR)	0.0701	1	0.7911

Figure 8. Kaplan-Meier Estimated Overall Survival Curves of Stage III Cervical Cancer Patients by Histological Type, Treatment Started in 2006

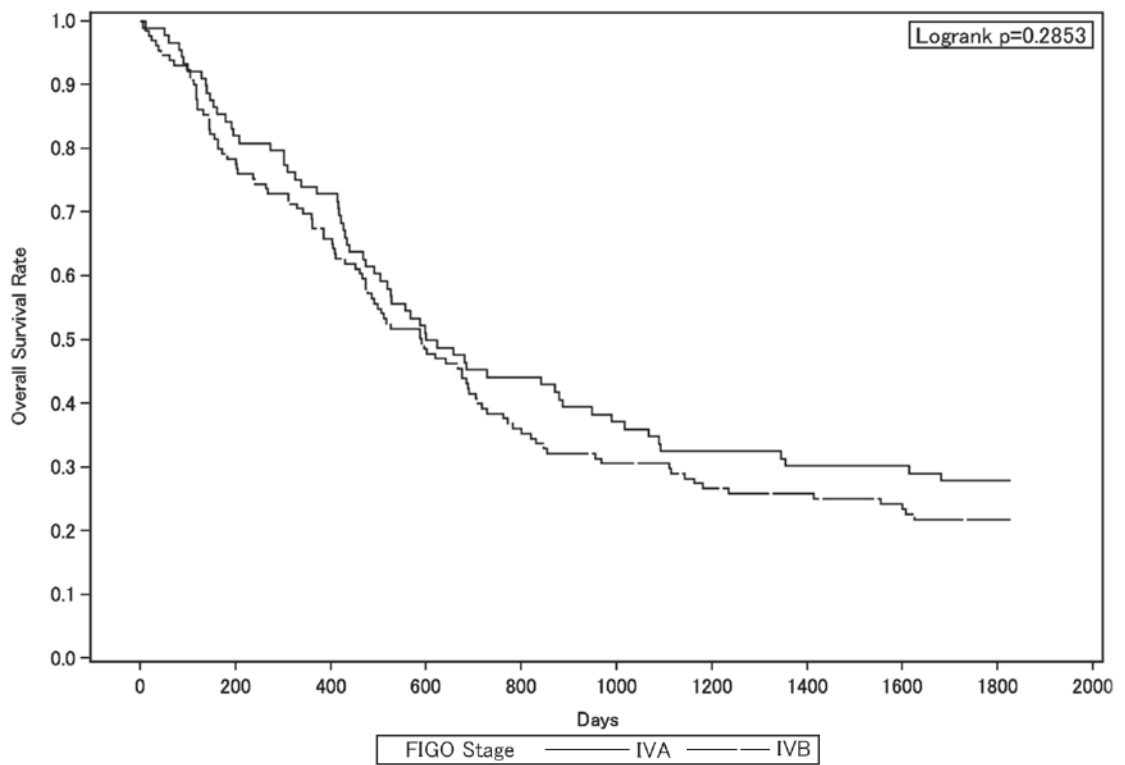


Test of Equality over Strata			
Test	Chi-Square	DF	Pr > Chi-Square
Log-rank	26.4137	3	<.0001
Wilcoxon	28.0953	3	<.0001
-2Log (LR)	21.1617	3	<.0001

Adjustment for Multiple Comparisons for the Log-rank Test				
Strata Comparison		Chi-Square	p-Values	
Histological Type	Histological Type		Raw	Tukey-Kramer
Adenocarcinoma	Adenosquamous carcinoma	5.3922	0.0202	0.0930
Adenocarcinoma	Others	0.0328	0.8563	0.9979
Adenocarcinoma	Squamous cell carcinoma	11.0850	0.0009	0.0048
Adenosquamous carcinoma	Others	9.0098	0.0027	0.0143
Adenosquamous carcinoma	Squamous cell carcinoma	5.5761	0.0182	0.0847
Others	Squamous cell carcinoma	19.2696	<.0001	<.0001

Figure 9.

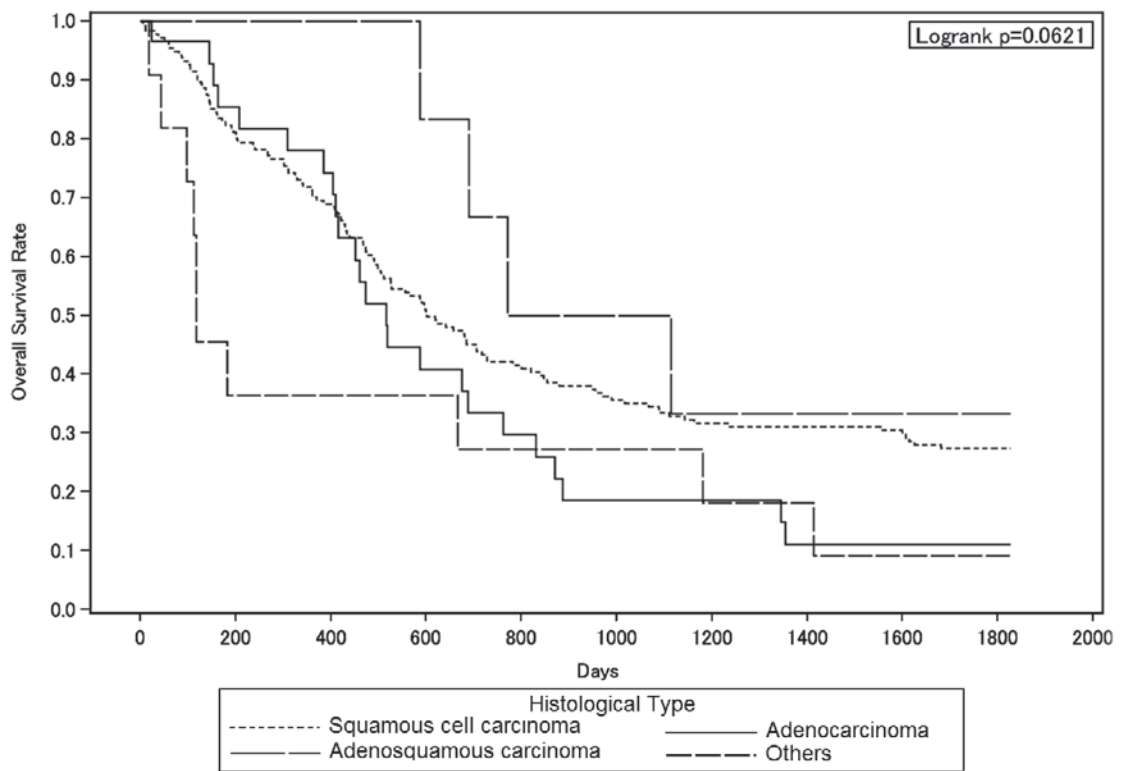
Kaplan-Meier Estimated Overall Survival Curves of Cervical Cancer Patients by FIGO Stage IV Substage, Treatment Started in 2006



Test of Equality over Strata			
Test	Chi-Square	DF	Pr > Chi-Square
Log-rank	1.1415	1	0.2853
Wilcoxon	1.1365	1	0.2864
-2Log(LR)	1.5049	1	0.2199

Figure 10.

Kaplan-Meier Estimated Overall Survival Curves of Stage IV Cervical Cancer Patients by Histological Type, Treatment Started in 2006



Test of Equality over Strata			
Test	Chi-Square	DF	Pr > Chi-Square
Log-rank	7.3308	3	0.0621
Wilcoxon	9.9963	3	0.0186
-2Log (LR)	7.7699	3	0.0510

Adjustment for Multiple Comparisons for the Log-rank Test				
Strata Comparison		Chi-Square	p-Values	
Histological Type	Histological Type		Raw	Tukey-Kramer
Adenocarcinoma	Adenosquamous carcinoma	2.7728	0.0959	0.3423
Adenocarcinoma	Others	0.0480	0.8265	0.9963
Adenocarcinoma	Squamous cell carcinoma	2.7081	0.0998	0.3530
Adenosquamous carcinoma	Others	4.2781	0.0386	0.1635
Adenosquamous carcinoma	Squamous cell carcinoma	0.7915	0.3737	0.8103
Others	Squamous cell carcinoma	4.2579	0.0391	0.1652

	A	B	C	D	E	F	G	H	I	J	K
	Institution	Total No. Treated	no description	Alive with no Evidence of the Disease	Alive with Carcinoma	Alive with or without Carcinoma Unknown	Died of Carcinoma	Died of Other Malignant Tumor	Died of Intercurrent Disease	Cause of Death Unknown	Lost to follow-up
	130044 NTT MED. CENTER TOKYO	4	0	1	0	0	0	0	2	0	1
	130046 SHOWA UNIV.	24	0	16	0	0	3	0	0	0	5
○	130050 TOHO UNIV. OMORI MED. CENTER	13	0	11	0	0	0	0	0	0	2
○	130055 RED CROSS MED. CENTER	13	0	10	1	0	1	0	0	0	1
○	130063 KOSEI CENTRAL HOSP.	5	0	4	1	0	0	0	0	0	0
○	130077 KEIO UNIV.	76	0	58	7	0	2	0	1	0	8
	130080 NATIONAL CENTER FOR GLOBAL HEALTH AND MED	18	18	0	0	0	0	0	0	0	0
	130081 TOKYO WOMENS MED. UNIV.	31	31	0	0	0	0	0	0	0	0
○	130085 KOSEI HOSP.	14	0	9	1	0	3	0	1	0	0
	130092 TEIKYO UNIV.	16	0	8	1	0	2	0	0	0	5
	130095 NIHON UNIV.	24	0	15	3	0	1	0	0	0	5
	130099 MUSASHINO RED CROSS HOSP.	29	29	0	0	0	0	0	0	0	0
○	130112 MACHIDA MUNI. HOSP.	21	0	16	0	0	2	0	0	0	3
○	130116 JIKEI UNIV. 3RD HOSP.	18	0	15	2	0	1	0	0	0	0
○	130119 NIPPON MED. SCH. TAMA NAGAYAMA HOSP.	9	0	8	0	0	0	0	0	0	1
○	130122 TOKYO METRO. KOMAGOME HOSP.	36	0	25	4	0	5	0	0	0	2
	130124 KYOUDO HOSP.	12	0	9	0	0	0	0	0	0	3
○	130125 CANCER INST. HOSP.	119	0	106	0	0	10	0	0	0	3
	130135 TAMA-NAMBU CHIIKI HOSP.	13	13	0	0	0	0	0	0	0	0
	140001 KAWASAKI MUNI. HOSP.	15	15	0	0	0	0	0	0	0	0
○	140006 NIPPON MED. SCH. MUSASHI KOSUGI HOSP.	18	0	14	1	0	2	0	0	0	1
○	140008 KANTO ROSAI HOSP.	9	0	9	0	0	0	0	0	0	0
	140012 ST. MARIANNA UNIV.	35	35	0	0	0	0	0	0	0	0
	140016 YOKOHAMA ROSAI HOSP.	19	0	10	1	0	3	0	0	0	5
○	140017 SHOWA UNIV. FUJIGAOKA HOSP.	20	0	19	0	0	0	1	0	0	0
	140020 KITAZATO UNIV.	55	55	0	0	0	0	0	0	0	0
○	140029 YOKOHAMA CITY UNIV.	30	0	21	2	0	4	1	0	0	2
○	140030 YOKOHAMA MINAMI KYOSAI HOSP.	6	0	4	0	0	2	0	0	0	0
	140038 YAMATO MUNI. HOSP.	7	7	0	0	0	0	0	0	0	0
○	140054 ISEHARA KYODO HOSP.	11	0	9	0	0	1	0	0	0	1
	140055 TOKAI UNIV.	34	0	23	0	0	4	0	0	0	7
○	140059 KANAGAWA CANCER CENTER	76	0	65	0	0	10	1	0	0	0
○	140061 YOKOHAMA CITY UNIV. MED. CENTER	13	0	9	1	0	3	0	0	0	0
	150002 YAMANASHI PREF. CENTRAL HOSP.	16	16	0	0	0	0	0	0	0	0
○	150006 UNIV. OF YAMANASHI	20	0	16	1	0	1	0	0	0	2
○	160001 NAGANO RED CROSS HOSP.	19	0	16	0	0	2	0	0	0	1
○	160006 SHINSHU UNIV.	38	0	29	1	0	4	0	0	0	4
	170006 FUJI CITY GENERAL HOSP.	5	0	3	0	0	0	0	0	0	2
○	170009 SHIZUOKA GENERAL HOSP.	23	0	19	0	0	4	0	0	0	0
○	180001 NAGAOKA RED CROSS HOSP.	20	0	16	0	0	0	1	0	0	3
○	180010 NIIGATA CANCER CENTER HOSP.	61	0	52	0	0	6	0	0	0	3
	190001 TOYAMA UNIV.	12	0	11	1	0	0	0	0	0	0
○	190002 TOYAMA RED CROSS HOSP.	8	0	5	1	0	1	0	0	0	1
○	200001 KANAZAWA MED. UNIV.	7	0	6	0	0	0	0	1	0	0
○	200002 KANAZAWA MED. CENTER	16	0	12	0	0	3	0	0	0	1
○	200004 KANAZAWA UNIV.	18	0	13	2	0	3	0	0	0	0
○	210002 FUKUI PREF. HOSP.	4	0	3	1	0	0	0	0	0	0
	210003 FUKUI UNIV.	8	8	0	0	0	0	0	0	0	0
	210004 FUKUI RED CROSS HOSP.	6	0	3	1	0	0	0	0	0	2
○	220002 GIFU UNIV.	36	0	29	1	0	1	0	0	1	4
	220006 OGAKI MUNI. HOSP.	22	0	19	1	0	2	0	0	0	0
○	230001 TOYOHASHI MUNI. HOSP.	20	0	19	0	0	1	0	0	0	0
○	230014 RED CROSS NAGOYA DAIICHI HOSP.	20	0	17	2	0	1	0	0	0	0
	230024 NAGOYA MED. CENTER	16	16	0	0	0	0	0	0	0	0
	230031 NAGOYA UNIV.	40	5	24	0	0	6	0	0	0	5
○	230034 NAGOYA CITY UNIV.	20	0	15	1	0	3	1	0	0	0
○	230035 FUJITA HEALTH UMIN.	20	0	15	1	0	1	0	0	0	3
	230040 AICHI MED. UNIV.	16	16	0	0	0	0	0	0	0	0
○	230052 AICHI CANCER CENTER	54	0	46	0	0	7	1	0	0	0

A		B	C	D	E	F	G	H	I	J	K
Institution		Total No. Treated	no description	Alive with no Evidence of the Disease	Alive with Carcinoma	Alive with or without Carcinoma Unknown	Died of Carcinoma	Died of Other Malignant Tumor	Died of Intercurrent Disease	Cause of Death Unknown	Lost to follow-up
○ 240002	MIE PREF. GENERAL MED. CENTER	12	0	8	1	0	1	0	0	0	2
○ 240003	YOKKAICHI MUNI. HOSP.	12	0	9	3	0	0	0	0	0	0
○ 240009	MIE UNIV.	29	0	16	1	0	1	0	1	0	10
○ 240015	ISE RED CROSS HOSP.	15	0	8	3	0	4	0	0	0	0
○ 250001	OHTSU RED CROSS HOSP.	10	0	7	0	0	1	1	0	0	1
○ 250003	SHIGA UNIV. OF MED. SCIENCE	10	10	0	0	0	0	0	0	0	0
○ 250008	SHIGA MED. CENTER FOR ADULTS	12	0	10	0	0	2	0	0	0	0
○ 260002	KYOTO 2ND RED CROSS HOSP.	10	0	8	0	0	1	0	0	0	1
○ 260003	KYOTO PREF. UNIV. OF MED.	15	0	9	0	0	1	0	0	0	5
○ 260007	KYOTO 1ST RED CROSS HOSP.	21	0	18	0	0	1	0	0	0	2
○ 260009	KYOTO UNIV.	43	0	33	0	0	6	0	0	0	4
○ 270003	KITANO HOSP.	6	0	6	0	0	0	0	0	0	0
○ 270007	OSAKA CITY GENERAL HOSP.	29	0	26	0	0	1	0	0	0	2
○ 270009	OSAKA NATIONAL HOSP.	27	0	26	0	0	0	0	0	0	1
○ 270013	OSAKA POLICE HOSP.	10	0	6	0	0	1	0	0	0	3
○ 270035	OSAKA UNIV.	62	4	40	1	0	4	0	0	0	13
○ 270041	OSAKA MED. COLL.	47	0	40	0	0	3	0	0	0	4
○ 270042	KANSAI MED. UNIV.	19	0	11	1	0	3	0	1	0	3
○ 270062	OSAKA ROUSAI HOSP.	34	2	24	7	0	1	0	0	0	0
○ 270101	OSAKA MED. CENTER FOR CANCER AND CVD	46	0	41	1	0	1	0	0	0	3
○ 280001	KOBE UNIV.	25	0	10	0	0	0	0	0	0	15
○ 280002	KOBE CITY MED. CENTER GENERAL HOSP.	25	0	18	0	0	2	0	0	0	5
○ 280010	KOBE MED. CENTER	4	0	3	0	0	0	0	0	0	1
○ 280015	KANSAI ROSAI HOSP.	24	0	24	0	0	0	0	0	0	0
○ 280021	HYOGO MED. COLL.	28	28	0	0	0	0	0	0	0	0
○ 280028	TOYOOKA PUBLIC HOSP.	5	0	5	0	0	0	0	0	0	0
○ 280030	HIMEJI RED CROSS HOSP.	18	18	0	0	0	0	0	0	0	0
○ 280031	HIMEJI MED. CENTER	10	10	0	0	0	0	0	0	0	0
○ 280033	HYOGO CANCER CENTER	90	0	72	4	0	13	1	0	0	0
○ 290003	NARA PREF. NARA HOSP.	16	0	14	0	0	2	0	0	0	0
○ 290004	TENRI HOSP.	26	0	16	2	0	6	0	0	0	2
○ 290007	NARA MED. UNIV.	20	0	6	2	0	3	0	1	0	8
○ 300002	JAPAN RED CROSS WAKAYAMA MED. CENTER	24	0	13	1	0	5	0	0	5	0
○ 300003	WAKAYAMA MED. UNIV.	18	1	14	1	0	1	0	1	0	0
○ 310001	TOTTORI PREF. CENTRAL HOSP.	10	0	8	1	0	1	0	0	0	0
○ 310007	TOTTORI UNIV.	20	0	17	2	0	1	0	0	0	0
○ 320003	SHIMANE UNIV.	12	0	10	2	0	0	0	0	0	0
○ 320004	SHIMANE PREF. CENTRAL HOSP.	11	0	7	1	0	1	0	0	0	2
○ 330003	KAWASAKI HOSP.	6	0	6	0	0	0	0	0	0	0
○ 330004	OKAYAMA SAISEIKAI GENERAL HOSP.	14	0	6	3	0	4	0	1	0	0
○ 330006	OKAYAMA UNIV.	33	0	27	3	0	2	0	0	0	1
○ 330008	KURASHIKI CENTRAL HOSP.	19	0	12	3	0	2	0	1	0	1
○ 340001	FUKUYAMA MED. CENTER	19	0	14	1	0	4	0	0	0	0
○ 340002	ONOMICHI GENERAL HOSP.	13	13	0	0	0	0	0	0	0	0
○ 340007	HIROSHIMA CITY HOSP.	44	0	34	1	0	2	0	0	1	6
○ 340010	HIROSHIMA CITY ASA HOSP.	17	1	14	1	0	0	1	0	0	0
○ 340012	HIROSHIMA UNIV.	30	0	25	1	0	1	0	0	0	3
○ 340014	HIROSHIMA PREF. HOSP.	13	1	11	0	0	1	0	0	0	0
○ 340015	KURE MED. CENTER	12	0	12	0	0	0	0	0	0	0
○ 340018	HIROSHIMA GENERAL HOSP.	18	0	13	0	0	1	0	1	0	3
○ 340031	HIGASHIHIROSHIMA MED. CENTER	1	1	0	0	0	0	0	0	0	0
○ 350003	TOKUYAMA CENTRAL HOSP.	15	15	0	0	0	0	0	0	0	0
○ 350008	YAMAGUCHI RED CROSS HOSP.	9	0	7	0	0	2	0	0	0	0
○ 350009	YAMAGUCHI UNIV.	17	0	16	0	0	0	0	0	0	1
○ 360002	TOKUSHIMA MUNI. HOSP.	6	6	0	0	0	0	0	0	0	0
○ 360003	TOKUSHIMA UNIV.	31	0	24	2	0	3	0	0	0	2
○ 360005	TOKUSHIMA PREF. CENTRAL HOSP.	5	0	3	0	0	2	0	0	0	0
○ 370001	TAKAMATSU RED CROSS HOSP.	11	0	11	0	0	0	0	0	0	0
○ 370002	TAKAMATSU MUNI. HOSP.	3	0	3	0	0	0	0	0	0	0

A		B	C	D	E	F	G	H	I	J	K
Institution		Total No. Treated	no description	Alive with no Evidence of the Disease	Alive with Carcinoma	Alive with or without Carcinoma Unknown	Died of Carcinoma	Died of Other Malignant Tumor	Died of Intercurrent Disease	Cause of Death Unknown	Lost to follow-up
	370003 KAGAWA PREF. CENTRAL HOSP.	15	15	0	0	0	0	0	0	0	0
○	380001 SHIKOKU CANCER CENTER	49	0	40	3	0	4	1	1	0	0
○	390003 KOCHI HEALTH SCIENCES CENTER	7	0	7	0	0	0	0	0	0	0
○	390006 KOCHI UNIV.	6	0	3	1	0	2	0	0	0	0
○	400008 UNIV. OCCUPATIONAL & ENVIRONMENTAL HEALTH	24	0	20	0	0	2	0	0	0	2
○	400010 KYUSHU MED. CENTER	12	0	9	1	0	1	0	0	1	0
○	400012 KYUSHU UNIV.	52	0	38	5	0	3	0	0	0	6
○	400013 FUKUOKA UNIV.	31	0	22	4	0	4	1	0	0	0
○	400014 FUKUOKA RED CROSS HOSP.	10	0	7	2	0	0	0	0	0	1
○	400020 KURUME UNIV.	33	0	23	0	0	2	0	2	0	6
○	400040 KYUSHU CANCER CENTER	66	0	56	1	0	6	0	0	0	3
○	410005 SAGA UNIV.	22	0	16	0	0	4	0	0	1	1
○	420001 NAGASAKI MUNI. HOSP.	12	0	12	0	0	0	0	0	0	0
	420002 NAGASAKI UNIV.	18	0	13	1	0	0	0	0	0	4
○	420003 RED CROSS NAGASAKI ATOMIC BOMB HOSP.	8	0	7	0	0	1	0	0	0	0
	420006 SASEBO KYOSAI HOSP.	24	0	21	0	0	3	0	0	0	0
○	430001 KUMAMOTO MED. CENTER	50	1	34	2	0	9	0	1	0	3
○	430002 KUMAMOTO UNIV.	23	0	18	0	0	3	0	0	0	2
○	430003 KUMAMOTO CITY HOSP.	36	0	27	6	0	0	2	0	0	1
○	440002 OITA PREF. HOSP.	20	0	19	0	0	1	0	0	0	0
○	440005 OITA UNIV.	14	0	9	2	0	1	0	0	0	2
○	450001 MIYAZAKI PREF. HOSP.	23	0	18	0	0	2	0	0	0	3
○	450005 MIYAZAKI UNIV.	9	0	8	0	0	1	0	0	0	0
○	460001 KAGOSHIMA UNIV.	38	0	30	0	0	6	0	0	1	1
	460004 KAGOSHIMA CITY HOSP.	47	0	25	3	0	0	0	1	0	18
○	470008 RYUKYU UNIV.	45	0	33	4	0	4	0	0	0	4
○	470010 OKINAWA PREF. CHUBU HOSP.	11	0	9	0	0	2	0	0	0	0
Total		4631	599	3040	150	9	402	25	23	10	373

Table 1. No. of Patients by Stage and Age

Age		~19		20~29		30~39		40~49		50~59		60~69		70~79		80~		Total	
		No.	%	No.	%	No.	%	No.	%	No.	%	No.	%	No.	%	No.	%	No.	%
I	A	0	0.0	16	0.4	93	2.0	200	4.3	336	7.3	124	2.7	68	1.5	21	0.5	858	18.5
	B	1	0.0	10	0.2	53	1.1	173	3.7	643	13.9	390	8.4	196	4.2	31	0.7	1497	32.3
	C	0	0.0	0	0.0	12	0.3	28	0.6	174	3.8	205	4.4	130	2.8	43	0.9	592	12.8
	not cl.	0	0.0	1	0.0	1	0.0	3	0.1	5	0.1	2	0.0	0	0.0	2	0.0	14	0.3
	total	1	0.0	27	0.6	159	3.4	404	8.7	1158	25.0	721	15.6	394	8.5	97	2.1	2961	63.9
II	A	0	0.0	0	0.0	7	0.2	36	0.8	45	1.0	45	1.0	28	0.6	7	0.2	168	3.6
	B	0	0.0	0	0.0	15	0.3	35	0.8	73	1.6	43	0.9	41	0.9	8	0.2	215	4.6
	not cl.	0	0.0	0	0.0	0	0.0	0	0.0	2	0.0	2	0.0	3	0.1	1	0.0	8	0.2
	total	0	0.0	0	0.0	22	0.5	71	1.5	120	2.6	90	1.9	72	1.6	16	0.4	391	8.4
III	A	0	0.0	6	0.1	21	0.5	64	1.4	237	5.1	106	2.3	55	1.2	21	0.5	510	11.0
	B	0	0.0	0	0.0	0	0.0	2	0.0	5	0.1	5	0.1	3	0.1	4	0.1	19	0.4
	C	0	0.0	1	0.0	13	0.3	59	1.3	178	3.8	92	2.0	64	1.4	7	0.2	414	8.9
	not cl.	0	0.0	0	0.0	2	0.0	2	0.0	6	0.1	3	0.1	3	0.1	2	0.0	18	0.4
total	0	0.0	7	0.2	36	0.8	127	2.7	426	9.2	206	4.5	125	2.7	34	0.7	961	20.8	
IV	A	0	0.0	0	0.0	1	0.0	6	0.1	5	0.1	9	0.2	7	0.2	3	0.1	31	0.7
	B	0	0.0	0	0.0	11	0.2	22	0.5	91	2.0	97	2.1	52	1.1	6	0.1	279	6.0
	not cl.	0	0.0	0	0.0	0	0.0	0	0.0	3	0.1	4	0.1	1	0.0	0	0.0	8	0.2
	total	0	0.0	0	0.0	12	0.3	28	0.6	99	2.1	110	2.4	60	1.3	9	0.2	318	6.9
Total		1	0.0	34	0.7	229	4.9	630	13.6	1803	38.9	1127	24.3	651	14.1	156	3.4	4631	

Table 2. Type of Treatment

Treatment FIGO Stage		Surgery															
		Alone		Rad.		Chem.Immun. Hormon		Other		Rad. Chem.Immun. Hormon		Rad. Other		Chem.Immun. Hormon, Other		Rad. Chem.Immun. Hormon, Other	
		No.	%	No.	%	No.	%	No.	%	No.	%	No.	%	No.	%	No.	%
I	A	756	16.3	8	0.2	47	1.0	0	0.0	0	0.0	0	0.0	0	0.0	0	0.0
	B	1213	26.2	11	0.2	257	5.6	0	0.0	1	0.0	0	0.0	2	0.0	0	0.0
	C	196	4.2	36	0.8	342	7.4	0	0.0	5	0.1	0	0.0	0	0.0	0	0.0
	not cl.	6	0.1	0	0.0	4	0.1	0	0.0	0	0.0	0	0.0	0	0.0	0	0.0
	total	2171	46.9	55	1.2	650	14.0	0	0.0	6	0.1	0	0.0	2	0.0	0	0.0
II	A	86	1.9	12	0.3	64	1.4	0	0.0	1	0.0	0	0.0	0	0.0	0	0.0
	B	67	1.5	21	0.5	118	2.6	0	0.0	6	0.1	0	0.0	0	0.0	0	0.0
	not cl.	0	0.0	0	0.0	3	0.1	0	0.0	0	0.0	0	0.0	0	0.0	0	0.0
	total	153	3.3	33	0.7	185	4.0	0	0.0	7	0.2	0	0.0	0	0.0	0	0.0
III	A	133	2.9	6	0.1	362	7.8	1	0.0	6	0.1	0	0.0	0	0.0	0	0.0
	B	5	0.1	1	0.0	10	0.2	0	0.0	2	0.0	0	0.0	0	0.0	0	0.0
	C	37	0.8	7	0.2	332	7.2	0	0.0	26	0.6	0	0.0	0	0.0	1	0.0
	not cl.	1	0.0	0	0.0	9	0.2	0	0.0	1	0.0	0	0.0	0	0.0	0	0.0
	total	176	3.8	14	0.3	713	15.4	1	0.0	35	0.8	0	0.0	0	0.0	1	0.0
IV	A	9	0.2	0	0.0	15	0.3	0	0.0	3	0.1	0	0.0	0	0.0	0	0.0
	B	26	0.6	4	0.1	163	3.5	0	0.0	10	0.2	0	0.0	0	0.0	0	0.0
	not cl.	1	0.0	0	0.0	4	0.1	0	0.0	0	0.0	0	0.0	0	0.0	0	0.0
	total	36	0.8	4	0.1	182	3.9	0	0.0	13	0.3	0	0.0	0	0.0	0	0.0
Total		2536	54.8	106	2.3	1730	37.4	1	0.0	61	1.3	0	0.0	2	0.0	1	0.0

Treatment FIGO Stage		Radiation								Chem.Immun. Hormon				Others				Total	
		Alone		Chem.Immun. Hormon		Other		Chem.Immun. Hormon, Other		Alone		Other		Alone		Other			
		No.	%	No.	%	No.	%	No.	%	No.	%	No.	%	No.	%	No.	%	No.	%
I	A	7	0.2	2	0.0	0	0.0	0	0.0	33	0.7	2	0.0	3	0.1	0	0.0	858	18.5
	B	6	0.1	2	0.0	0	0.0	0	0.0	5	0.1	0	0.0	0	0.0	0	0.0	1497	32.3
	C	5	0.1	0	0.0	0	0.0	0	0.0	7	0.2	0	0.0	1	0.0	0	0.0	592	12.8
	not cl.	0	0.0	0	0.0	0	0.0	0	0.0	2	0.0	0	0.0	2	0.0	0	0.0	14	0.3
	total	18	0.4	4	0.1	0	0.0	0	0.0	47	1.0	2	0.0	6	0.1	0	0.0	2961	63.9
II	A	1	0.0	2	0.0	1	0.0	0	0.0	1	0.0	0	0.0	0	0.0	0	0.0	168	3.6
	B	2	0.0	1	0.0	0	0.0	0	0.0	0	0.0	0	0.0	0	0.0	0	0.0	215	4.6
	not cl.	5	0.1	0	0.0	0	0.0	0	0.0	0	0.0	0	0.0	0	0.0	0	0.0	8	0.2
total	8	0.2	3	0.1	1	0.0	0	0.0	1	0.0	0	0.0	0	0.0	0	0.0	391	8.4	
III	A	1	0.0	0	0.0	0	0.0	0	0.0	1	0.0	0	0.0	0	0.0	0	0.0	510	11.0
	B	1	0.0	0	0.0	0	0.0	0	0.0	0	0.0	0	0.0	0	0.0	0	0.0	19	0.4
	C	4	0.1	4	0.1	0	0.0	0	0.0	2	0.0	0	0.0	1	0.0	0	0.0	414	8.9
	not cl.	2	0.0	2	0.0	0	0.0	0	0.0	3	0.1	0	0.0	0	0.0	0	0.0	18	0.4
	total	8	0.2	6	0.1	0	0.0	0	0.0	6	0.1	0	0.0	1	0.0	0	0.0	961	20.8
IV	A	0	0.0	1	0.0	0	0.0	0	0.0	3	0.1	0	0.0	0	0.0	0	0.0	31	0.7
	B	7	0.2	12	0.3	0	0.0	0	0.0	50	1.1	1	0.0	6	0.1	0	0.0	279	6.0
	not cl.	0	0.0	0	0.0	0	0.0	0	0.0	3	0.1	0	0.0	0	0.0	0	0.0	8	0.2
	total	7	0.2	13	0.3	0	0.0	0	0.0	56	1.2	1	0.0	6	0.1	0	0.0	318	6.9
Total		41	0.9	26	0.6	1	0.0	0	0.0	110	2.4	3	0.1	13	0.3	0	0.0	4631	

Table 3. 5-Year Results, Treatment Started in 2006

5-year result	No. of patients	%
Alive with no Evidence of the Disease	2665	82.2
Alive with Carcinoma	118	3.6
Alive with or without Carcinoma Unknown	8	0.3
Died of Carcinoma	309	9.5
Died of Other Malignant Tumor	16	0.5
Died of Intercurrent Disease	16	0.5
Cause of Death Unknown	9	0.3
Lost to follow-up	102	3.2
Total	3243	

Table 4. 5-Year Survival by Stage, Treatment Started in 2006

FIGO Stage		Patients treated		5-year survival		Lost to follow-up
		No.		%		
I	A	597	2105	98.8	96.3	53/2105(2.5%)
	B	1086		96.6		
	C	413		92.3		
	not cl.	9		-		
II	A	114	266	92.9	92.7	8/266(3.0%)
	B	150		93.2		
	not cl.	2		-		
III	A	360	658	85.9	80.6	24/658(3.7%)
	B	11		54.5		
	C	284		75.1		
	not cl.	3		-		
IV	A	20	214	57.0	35.8	17/214(7.9%)
	B	188		34.1		
	not cl.	6		-		
Total		3243		89.0		

Table 5. 5-Year Survival by Stage and Histological Type, Treatment Started in 2006

FIGO Stage	Histology	Patients treated		5-year survival
		No.	%	%
I	Endometrioid type	1815	86.2	96.9
	Serous, Mucinous, Clear cell type	83	3.9	90.1
	Others	207	9.8	93.6
	No description	0	0.0	-
II	Endometrioid type	206	77.4	93.6
	Serous, Mucinous, Clear cell type	20	7.5	84.2
	Others	40	15.0	92.4
	No description	0	0.0	-
III	Endometrioid type	451	68.5	86.7
	Serous, Mucinous, Clear cell type	73	11.1	60.8
	Others	134	20.4	70.1
	No description	0	0.0	-
IV	Endometrioid type	128	59.8	45.6
	Serous, Mucinous, Clear cell type	36	16.8	14.2
	Others	50	23.4	25.7
	No description	0	0.0	-

Table 6. 5-Year Survival by Stage and Grade, Treatment Started in 2006

FIGO Stage	Grade	Patients treated		5-year survival
		No.	%	%
I	Grade 1	1247	59.2	98.4
	Grade 2	464	22.0	95.0
	Grade 3	208	9.9	92.1
	Not Graded	186	8.8	90.7
II	Grade 1	119	44.7	97.4
	Grade 2	81	30.5	93.8
	Grade 3	33	12.4	78.8
	Not Graded	33	12.4	87.6
III	Grade 1	217	33.0	92.0
	Grade 2	177	26.9	84.0
	Grade 3	131	19.9	74.4
	Not Graded	133	20.2	62.6
IV	Grade 1	38	17.8	69.7
	Grade 2	37	17.3	41.0
	Grade 3	63	29.4	30.4
	Not Graded	76	35.5	19.6

Table 7. 5-Year Survival by Histological Type and Grade, Treatment Started in 2006

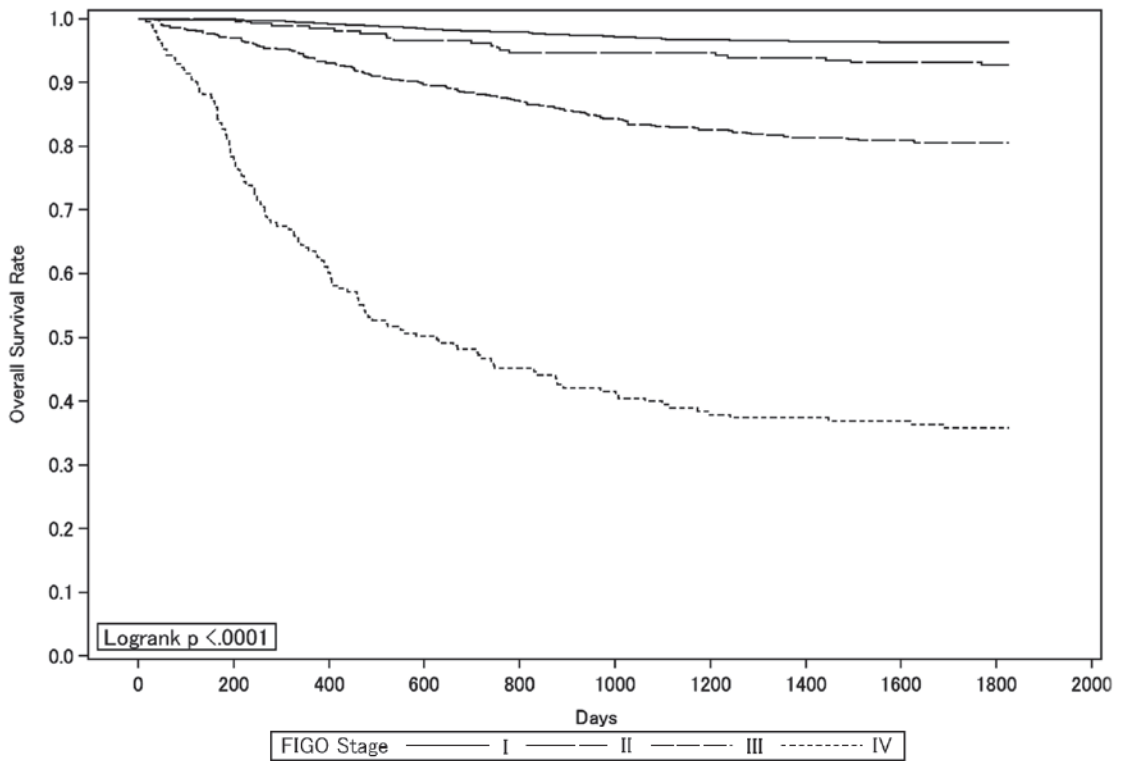
Histology	Grade	Patients treated		5-year survival
		No.	%	%
Endometrioid type	Grade 1	1513	58.2	96.8
	Grade 2	672	25.9	89.9
	Grade 3	342	13.2	80.0
	Not Graded	73	2.8	84.6
Serous, Mucinous, Clear cell type	Grade 1	18	8.5	88.9
	Grade 2	22	10.4	72.4
	Grade 3	34	16.0	60.7
	Not Graded	138	65.1	65.0
Others	Grade 1	90	20.9	98.9
	Grade 2	65	15.1	93.8
	Grade 3	59	13.7	69.1
	Not Graded	217	50.4	68.0

Table 8. 5-Year Survival by TNM Classification, Treatment Started in 2006

TNM Stage			Patients treated		5-year survival
			No.	%	%
T1a	N0	M0	604	18.9	98.8
T1b	N0	M0	1138	35.5	96.5
T1c	N0	M0	413	12.9	92.5
T2a	N0	M0	117	3.7	93.1
T2b	N0	M0	155	4.8	93.4
T3a	N0	M0	238	7.4	84.6
T3b	N0	M0	9	0.3	66.7
T3c	N0	M0	11	0.3	90.9
T4	N0	M0	13	0.4	66.7
T1a	N1	M0	2	0.1	100.0
T1b	N1	M0	41	1.3	87.2
T1c	N1	M0	80	2.5	77.1
T2a	N1	M0	6	0.2	66.7
T2b	N1	M0	32	1.0	84.1
T3a	N1	M0	79	2.5	62.1
T3b	N1	M0	9	0.3	33.3
T3c	N1	M0	56	1.8	74.7
T4	N1	M0	13	0.4	30.8
Any T	AnyN	M1	187	5.8	35.1

Figure 1.

Kaplan-Meier Estimated Overall Survival Curves of Corpus Cancer Patients by FIGO Stage, Treatment Started in 2006

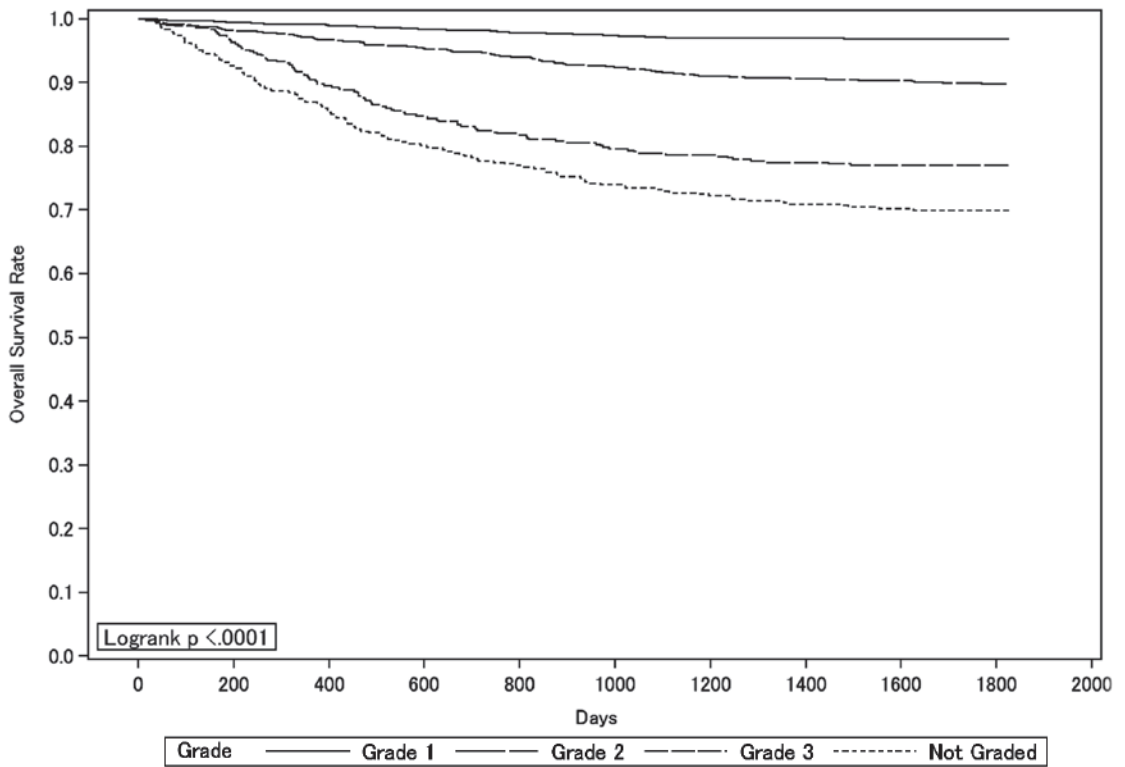


Test of Equality over Strata			
Test	Chi-Square	DF	Pr > Chi-Square
Log-rank	1138.1511	3	<.0001
Wilcoxon	1152.2279	3	<.0001
-2Log (LR)	586.0088	3	<.0001

Adjustment for Multiple Comparisons for the Log-rank Test				
Strata Comparison		Chi-Square	p-Values	
FIGO Stage	FIGO Stage		Raw	Tukey-Kramer
I	II	159.8000	<.0001	<.0001
I	III	214.1000	<.0001	<.0001
I	IV	717.0000	<.0001	<.0001
II	III	48.5153	<.0001	<.0001
II	IV	375.9000	<.0001	<.0001
III	IV	47.8928	<.0001	<.0001

Figure 2.

Kaplan-Meier Estimated Overall Survival Curves of Corpus Cancer Patients by Grade of Differentiation, Treatment Started in 2006

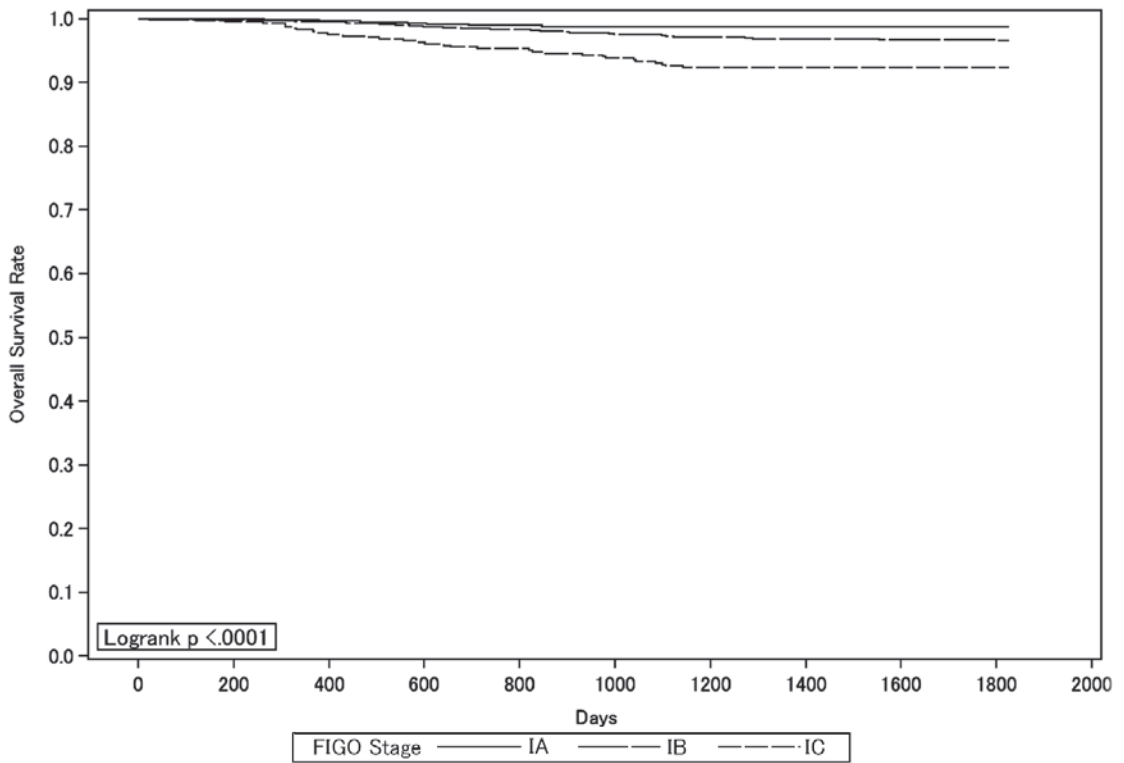


Test of Equality over Strata			
Test	Chi-Square	DF	Pr > Chi-Square
Log-rank	342.2125	3	<.0001
Wilcoxon	344.6794	3	<.0001
-2Log (LR)	313.1460	3	<.0001

Adjustment for Multiple Comparisons for the Log-rank Test				
Strata Comparison		Chi-Square	p-Values	
Grade	Grade		Raw	Tukey-Kramer
Grade 1	Grade 2	66.0922	<.0001	<.0001
Grade 1	Grade 3	203.9000	<.0001	<.0001
Grade 1	Not Graded	284.8000	<.0001	<.0001
Grade 2	Grade 3	30.4889	<.0001	<.0001
Grade 2	Not Graded	69.7642	<.0001	<.0001
Grade 3	Not Graded	10.5246	0.0012	0.0065

Figure 3.

Kaplan-Meier Estimated Overall Survival Curves of Corpus Cancer Patients by FIGO Stage I Substage, Treatment Started in 2006

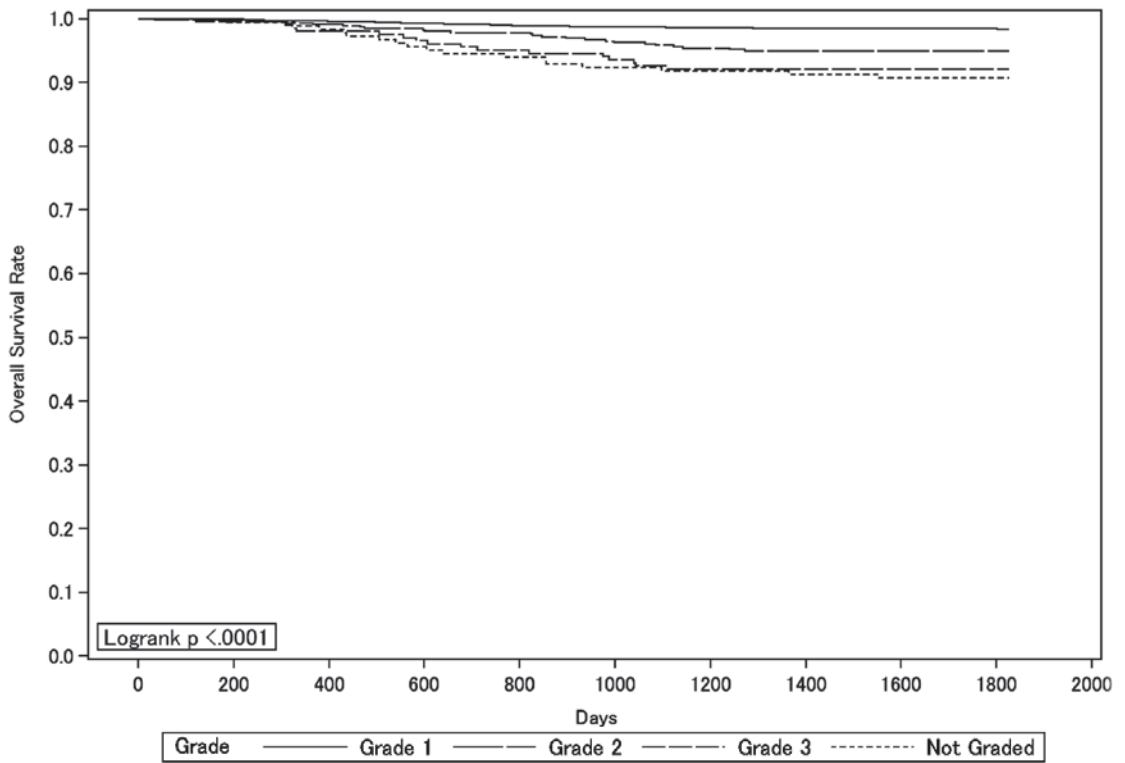


Test of Equality over Strata			
Test	Chi-Square	DF	Pr > Chi-Square
Log-rank	29.9586	2	<.0001
Wilcoxon	30.0636	2	<.0001
-2Log (LR)	28.4706	2	<.0001

Adjustment for Multiple Comparisons for the Log-rank Test				
Strata Comparison		Chi-Square	p-Values	
FIGO Stage	FIGO Stage		Raw	Tukey-Kramer
IA	IB	2.4986	0.1139	0.2540
IA	IC	28.0300	<.0001	<.0001
IB	IC	8.4374	0.0037	0.0103

Figure 4.

Kaplan-Meier Estimated Overall Survival Curves of Stage I Corpus Cancer Patients by Grade of Differentiation, Treatment Started in 2006

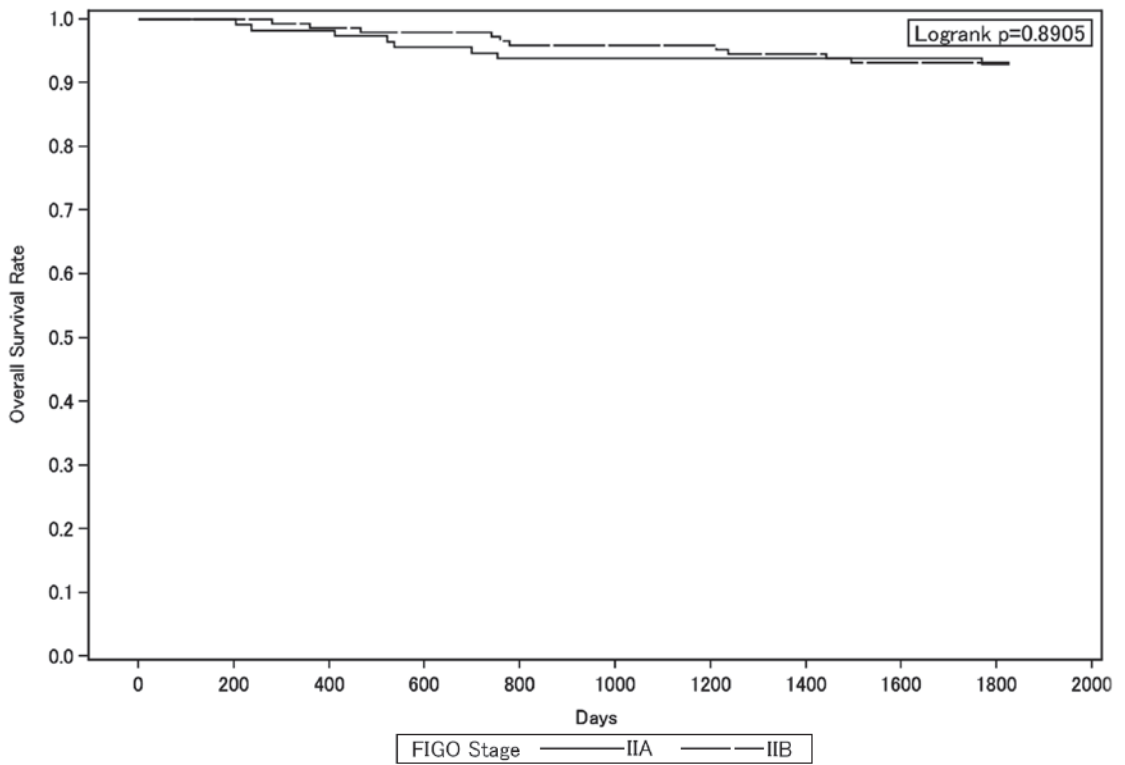


Test of Equality over Strata			
Test	Chi-Square	DF	Pr > Chi-Square
Log-rank	44.2374	3	<.0001
Wilcoxon	44.2450	3	<.0001
-2Log (LR)	40.1494	3	<.0001

Adjustment for Multiple Comparisons for the Log-rank Test				
Strata Comparison		Chi-Square	p-Values	
Grade	Grade		Raw	Tukey-Kramer
Grade 1	Grade 2	19.6683	<.0001	<.0001
Grade 1	Grade 3	35.0609	<.0001	<.0001
Grade 1	Not Graded	40.6214	<.0001	<.0001
Grade 2	Grade 3	0.2715	0.6023	0.9541
Grade 2	Not Graded	0.8268	0.3632	0.7999
Grade 3	Not Graded	0.2260	0.6345	0.9645

Figure 5.

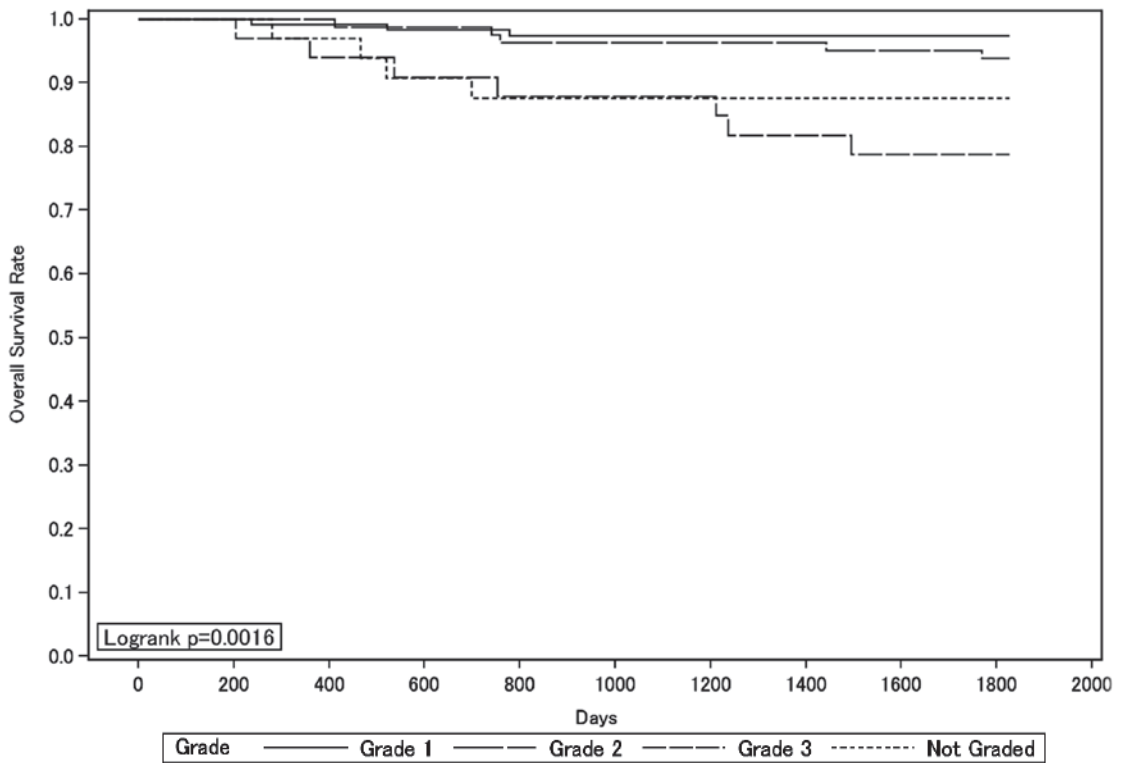
Kaplan-Meier Estimated Overall Survival Curves of Corpus Cancer Patients by FIGO Stage II Substage, Treatment Started in 2006



Test of Equality over Strata			
Test	Chi-Square	DF	Pr > Chi-Square
Log-rank	0.0189	1	0.8905
Wilcoxon	0.0331	1	0.8556
-2Log (LR)	0.0193	1	0.8895

Figure 6.

Kaplan-Meier Estimated Overall Survival Curves of Stage II Corpus Cancer Patients by Grade of Differentiation, Treatment Started in 2006

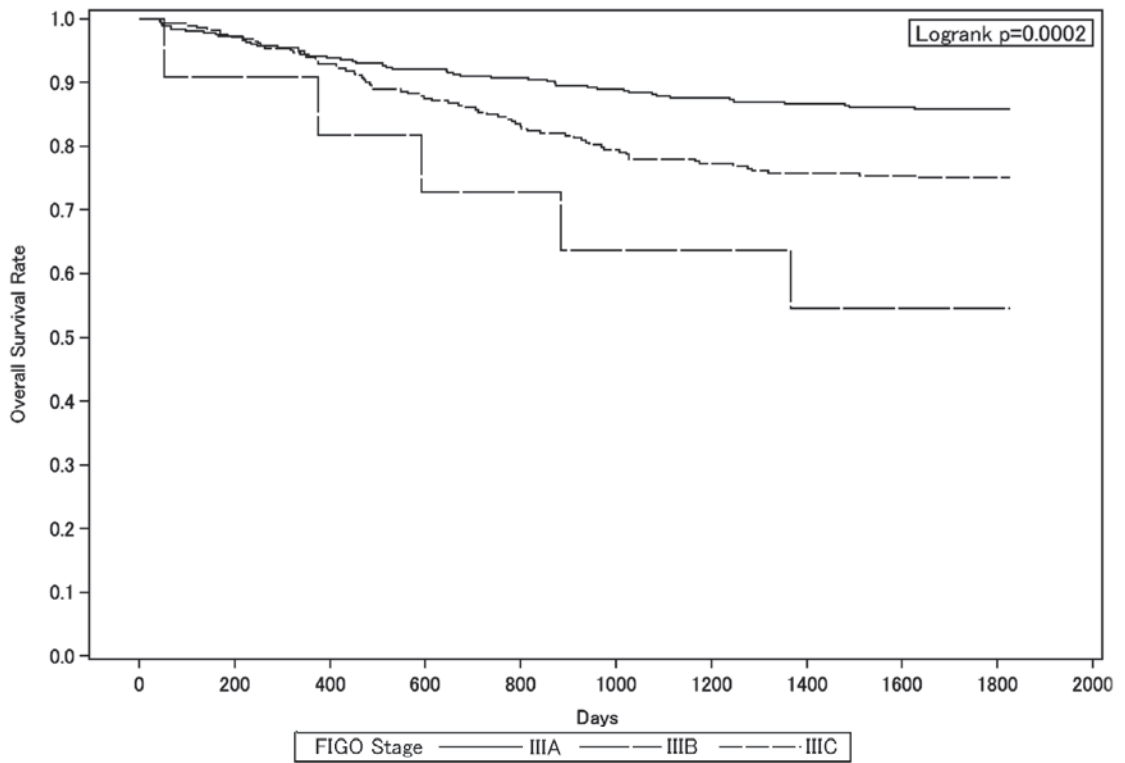


Test of Equality over Strata			
Test	Chi-Square	DF	Pr > Chi-Square
Log-rank	15.2798	3	0.0016
Wilcoxon	15.1843	3	0.0017
-2Log (LR)	12.7580	3	0.0052

Adjustment for Multiple Comparisons for the Log-rank Test				
Strata Comparison		Chi-Square	p-Values	
Grade	Grade		Raw	Tukey-Kramer
Grade 1	Grade 2	1.4902	0.2222	0.6136
Grade 1	Grade 3	12.2255	0.0005	0.0027
Grade 1	Not Graded	6.2801	0.0122	0.0590
Grade 2	Grade 3	4.3740	0.0365	0.1558
Grade 2	Not Graded	1.0317	0.3098	0.7402
Grade 3	Not Graded	1.9616	0.1613	0.4989

Figure 7.

Kaplan-Meier Estimated Overall Survival Curves of Corpus Cancer Patients by FIGO Stage III Substage, Treatment Started in 2006

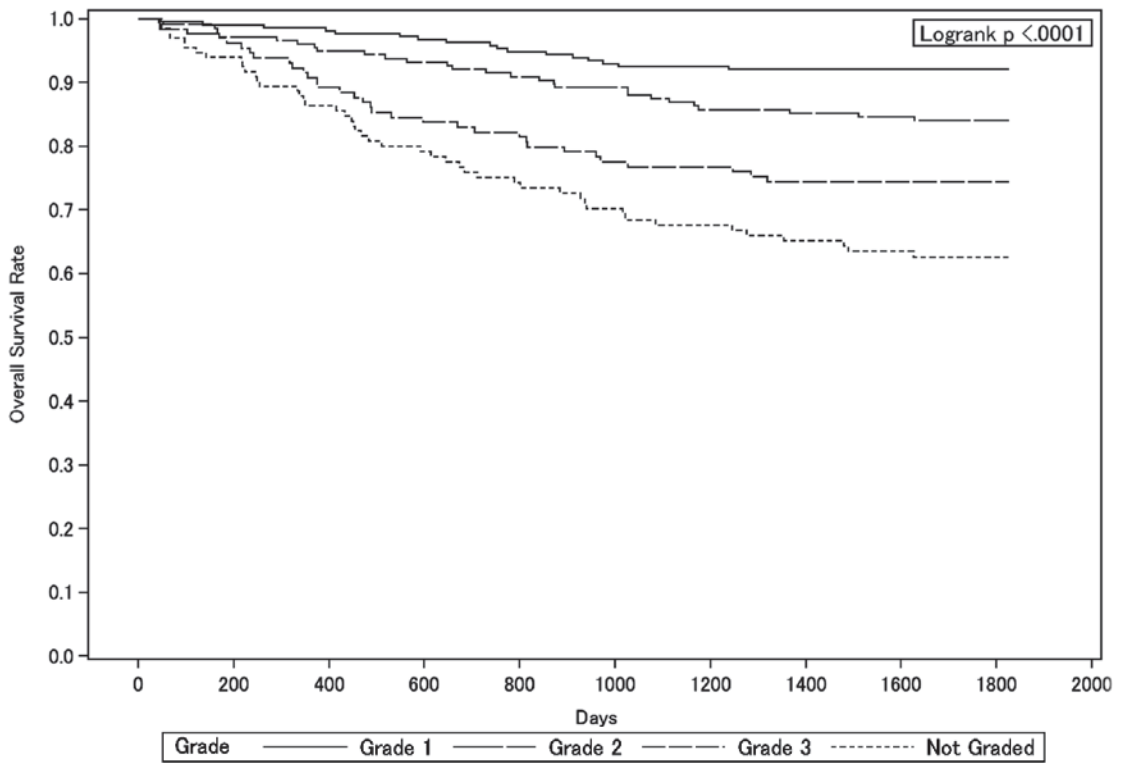


Test of Equality over Strata			
Test	Chi-Square	DF	Pr > Chi-Square
Log-rank	16.6406	2	0.0002
Wilcoxon	15.7508	2	0.0004
-2Log (LR)	16.3174	2	0.0003

Adjustment for Multiple Comparisons for the Log-rank Test				
Strata Comparison		Chi-Square	p-Values	
FIGO Stage	FIGO Stage		Raw	Tukey-Kramer
IIIA	IIIB	15.6319	<.0001	0.0002
IIIA	IIIC	11.3408	0.0008	0.0022
IIIB	IIIC	5.5560	0.0184	0.0483

Figure 8.

Kaplan-Meier Estimated Overall Survival Curves of Stage III Corpus Cancer Patients by Grade of Differentiation, Treatment Started in 2006

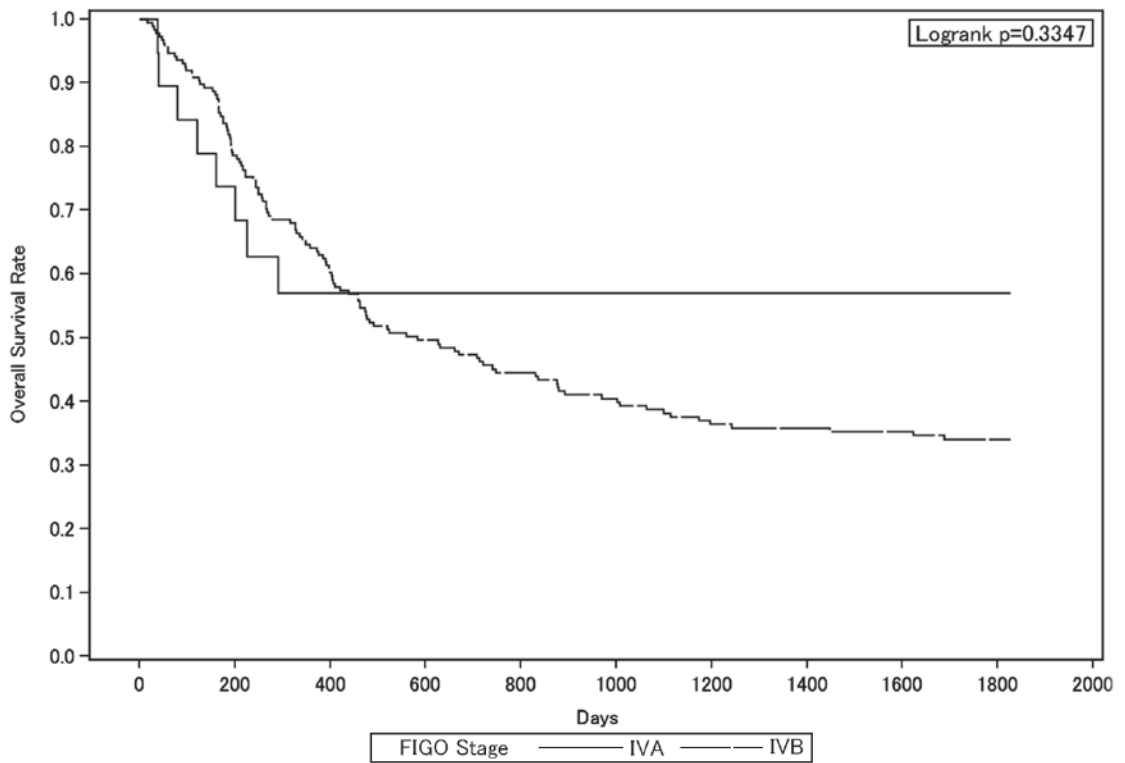


Test of Equality over Strata			
Test	Chi-Square	DF	Pr > Chi-Square
Log-rank	51.3871	3	<.0001
Wilcoxon	51.6818	3	<.0001
-2Log (LR)	52.3459	3	<.0001

Adjustment for Multiple Comparisons for the Log-rank Test				
Strata Comparison		Chi-Square	p-Values	
Grade	Grade		Raw	Tukey-Kramer
Grade 1	Grade 2	5.2015	0.0226	0.1025
Grade 1	Grade 3	20.5181	<.0001	<.0001
Grade 1	Not Graded	44.8076	<.0001	<.0001
Grade 2	Grade 3	4.5443	0.0330	0.1430
Grade 2	Not Graded	18.9727	<.0001	<.0001
Grade 3	Not Graded	5.7405	0.0166	0.0778

Figure 9.

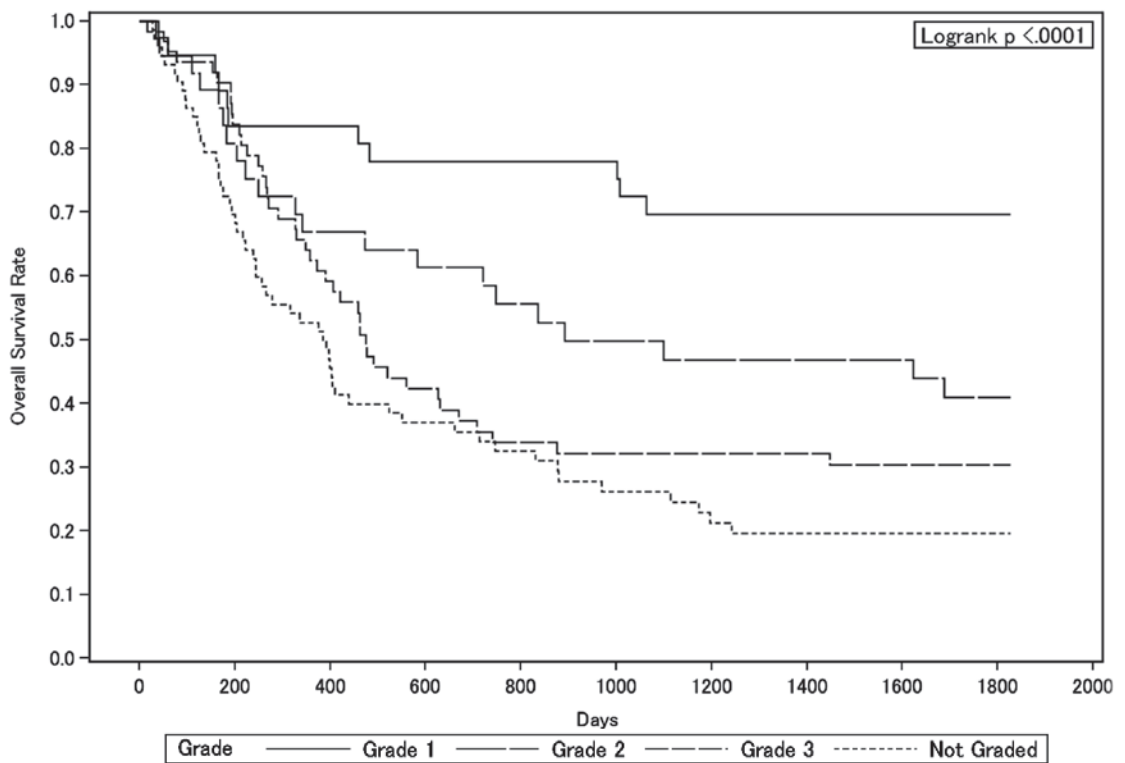
Kaplan-Meier Estimated Overall Survival Curves of Corpus Cancer Patients by FIGO Stage IV Substage, Treatment Started in 2006



Test of Equality over Strata			
Test	Chi-Square	DF	Pr > Chi-Square
Log-rank	0.9305	1	0.3347
Wilcoxon	0.0494	1	0.8241
-2Log (LR)	1.6476	1	0.1993

Figure 10.

Kaplan-Meier Estimated Overall Survival Curves of Stage IV Corpus Cancer Patients by Grade of Differentiation, Treatment Started in 2006



Test of Equality over Strata			
Test	Chi-Square	DF	Pr > Chi-Square
Log-rank	24.4086	3	<.0001
Wilcoxon	20.7804	3	0.0001
-2Log (LR)	40.7310	3	<.0001

Adjustment for Multiple Comparisons for the Log-rank Test				
Strata Comparison		Chi-Square	p-Values	
Grade	Grade		Raw	Tukey-Kramer
Grade 1	Grade 2	4.1912	0.0406	0.1708
Grade 1	Grade 3	8.4439	0.0037	0.0192
Grade 1	Not Graded	22.9970	<.0001	<.0001
Grade 2	Grade 3	1.1851	0.2763	0.6965
Grade 2	Not Graded	9.2308	0.0024	0.0127
Grade 3	Not Graded	3.0638	0.0801	0.2977

卵巢悪性腫瘍治療成績

Statement for the Year 2006, Inclusive, Malignant Ovarian Tumor

Table A. 5-Year Results, Stage I-IV

	A	B	C	D	E	F	G	H	I	J	K
	Institution	Total No. Treated	no description	Alive with no Evidence of the Disease	Alive with Carcinoma	Alive with or without Carcinoma Unknown	Died of Carcinoma	Died of Other Malignant Tumor	Died of Intercurrent Disease	Cause of Death Unknown	Lost to follow-up
	010003 HOKKAIDO CANCER CENTER	25	16	0	0	0	8	0	0	0	1
	010022 JR SAPPORO HOSP.	9	9	0	0	0	0	0	0	0	0
○	010025 SAPPORO MED. UNIV.	15	0	8	0	0	5	0	0	0	2
○	010027 HOKKAIDO UNIV.	14	0	8	3	1	2	0	0	0	0
○	010028 KKR SAPPORO MED. CENTER	12	0	8	1	0	3	0	0	0	0
	010037 ASAHIKAWA CITY HOSP.	8	8	0	0	0	0	0	0	0	0
○	010040 ASAHIKAWA MED. COLL.	9	0	7	0	0	1	0	0	0	1
○	020012 HIROSAKI UNIV.	24	0	14	1	1	5	1	0	0	2
○	020017 MISAWA CITY HOSP.	3	0	1	2	0	0	0	0	0	0
○	040004 TOHOKU UNIV.	47	0	23	2	0	16	0	0	0	6
○	040013 SENDAI MED. CENTER	13	0	5	0	0	7	0	0	0	1
○	050001 AKITA RED CROSS HOSP.	12	0	7	1	0	4	0	0	0	0
○	050003 AKITA UNIV.	23	4	12	0	1	4	0	1	1	0
○	060002 YAMAGATA PREF. CENTRAL HOSP.	8	0	5	0	0	3	0	0	0	0
	060005 YAMAGATA UNIV.	19	1	8	3	0	4	0	0	0	3
○	070003 FUKUSHIMA MED. UNIV.	14	1	6	2	0	5	0	0	0	0
	080001 TSUCHIURA KYODO GENERAL HOSP.	9	2	0	0	0	7	0	0	0	0
	080003 KASUMIGAURA MED. CENTER	14	4	2	5	0	3	0	0	0	0
	080006 TSUKUBA GAKUEN HOSP.	2	0	1	0	0	0	0	0	0	1
○	080007 TSUKUBA UNIV.	42	0	26	2	2	7	0	0	0	5
	080021 HITACHI GENERAL HOSP.	14	14	0	0	0	0	0	0	0	0
○	080031 TSUKUBA MED. CENTER	8	0	3	0	0	5	0	0	0	0
○	090001 TOCHIGI NATIONAL HOSP.	4	0	2	2	0	0	0	0	0	0
○	090004 DOKKYO MED. UNIV.	33	0	14	2	2	14	0	0	0	1
○	090005 SAISEIKAI UTSUNOMIYA HOSP.	10	0	4	0	0	5	0	0	0	1
	090011 ASHIKAGA RED CROSS HOSP.	9	0	5	0	0	2	0	0	0	2
	090015 JICHI MED. UNIV.	43	3	0	18	1	10	0	0	0	11
○	090016 TOCHIGI CANCER CENTER	15	0	9	2	0	4	0	0	0	0
	100022 GUNMA PREF. CANCER CENTER	27	0	8	1	0	2	0	0	0	16
○	110008 SAITAMA SHAKAI HOKEN HOSP.	15	0	8	2	0	5	0	0	0	0
○	110014 KOSHIGAYA MUNI. HOSP.	32	1	17	0	0	11	0	0	0	3
○	110023 SAITAMA NATIONAL HOSP.	8	0	5	0	0	3	0	0	0	0
	110027 NATIONAL DEFENSE MED. COLL.	26	26	0	0	0	0	0	0	0	0
○	110030 SAITAMA CANCER CENTER	30	0	14	1	0	15	0	0	0	0
○	120005 CHIBA UNIV.	20	0	12	1	0	7	0	0	0	0
	120009 NIPPON MED. SCH. CHIBA HOKUSOU HOSP.	13	13	0	0	0	0	0	0	0	0
	120012 MATSUDO CITY HOSP.	20	14	0	0	0	4	0	0	0	2
○	120015 TOKYO DENTAL COLL. ICHIKAEA GENERAL HOSP.	15	0	5	0	0	7	0	0	0	3
	120021 JIKEI UNIV. KASHIWA HOSP.	38	25	0	0	0	8	0	0	0	5
○	120023 JUNTENDO UNIV. URAYASU HOSP.	23	0	11	2	0	9	0	0	0	1
	120029 ASAHI CENTRAL HOSP.	17	0	4	4	2	4	0	0	0	3
○	120035 KAMEDA MED. CENTER	15	0	6	3	0	5	0	0	0	1
○	120042 CHIBA CANCER CENTER	19	0	6	1	1	11	0	0	0	0
○	130005 MITUI MEMORIAL HOSP.	10	0	5	0	1	3	0	0	0	1
○	130009 NATIONAL CANCER CENTER	34	0	17	5	0	10	0	0	0	2
○	130013 JIKEI UNIV.	37	0	21	7	1	7	1	0	0	0
○	130023 JUNTENDO UNIV.	36	0	16	2	1	16	0	0	0	1
	130024 TOKYO MED. DENT. UNIV.	16	16	0	0	0	0	0	0	0	0
○	130025 NIPPON MED. SCH.	13	0	6	2	0	3	0	0	0	2
○	130026 TOKYO UNIV.	21	0	10	2	2	7	0	0	0	0
	130029 TOKYO WOMENS MED. UNIV. MED. CENTER EAST	5	3	2	0	0	0	0	0	0	0
	130034 JIKEI UNIV. KATSUSHIKA MED. CENTER	24	24	0	0	0	0	0	0	0	0
	130038 TOKYO METRO. BOKUTOH HOSP.	23	23	0	0	0	0	0	0	0	0
○	130044 NTT MED. CENTER TOKYO	4	0	1	0	1	2	0	0	0	0

	A	B	C	D	E	F	G	H	I	J	K
	Institution	Total No. Treated	no description	Alive with no Evidence of the Disease	Alive with Carcinoma	Alive with or without Carcinoma Unknown	Died of Carcinoma	Died of Other Malignant Tumor	Died of Intercurrent Disease	Cause of Death Unknown	Lost to follow-up
	130046 SHOWA UNIV.	16	0	6	1	0	5	0	0	0	4
○	130050 TOHO UNIV. OMORI MED. CENTER	21	0	13	0	0	6	0	2	0	0
	130055 RED CROSS MED. CENTER	10	0	7	0	0	3	0	0	0	0
○	130077 KEIO UNIV.	46	0	29	2	1	12	0	0	0	2
	130080 NATIONAL CENTER FOR GLOBAL HEALTH AND MED	9	9	0	0	0	0	0	0	0	0
	130081 TOKYO WOMENS MED. UNIV.	24	24	0	0	0	0	0	0	0	0
	130085 KOSEI HOSP.	9	6	0	0	0	3	0	0	0	0
	130092 TEIKYO UNIV.	13	0	3	1	0	4	0	0	0	5
	130095 NIHON UNIV.	18	7	0	0	0	6	1	0	0	4
	130099 MUSASHINO RED CROSS HOSP.	30	30	0	0	0	0	0	0	0	0
○	130112 MACHIDA MUNI. HOSP.	10	0	7	0	0	2	0	0	0	1
	130116 JIKEI UNIV. 3RD HOSP.	21	0	2	1	0	9	0	0	0	9
	130119 NIPPON MED. SCH. TAMA NAGAYAMA HOSP.	7	5	0	0	0	2	0	0	0	0
○	130122 TOKYO METRO. KOMAGOME HOSP.	22	0	14	0	1	6	0	0	1	0
	130124 KYOUNDO HOSP.	7	5	0	0	0	1	0	0	0	1
○	130125 CANCER INST. HOSP.	73	0	36	6	0	26	0	0	0	5
	130135 TAMA-NAMBU CHIIKI HOSP.	14	14	0	0	0	0	0	0	0	0
	140001 KAWASAKI MUNI. HOSP.	14	14	0	0	0	0	0	0	0	0
○	140006 NIPPON MED. SCH. MUSASHI KOSUGI HOSP.	10	0	4	1	0	4	0	0	0	1
○	140008 KANTO ROSAI HOSP.	5	0	4	0	0	1	0	0	0	0
	140012 ST. MARIANNA UNIV.	31	16	11	1	0	2	1	0	0	0
○	140016 YOKOHAMA ROSAI HOSP.	12	0	7	0	0	5	0	0	0	0
○	140017 SHOWA UNIV. FUJIGAOKA HOSP.	16	0	5	2	0	8	0	0	0	1
	140020 KITAZATO UNIV.	34	24	0	0	0	5	0	0	0	5
○	140029 YOKOHAMA CITY UNIV.	24	0	13	3	0	8	0	0	0	0
	140030 YOKOHAMA MINAMI KYOSAI HOSP.	12	1	2	1	0	6	0	0	0	2
	140038 YAMATO MUNI. HOSP.	4	4	0	0	0	0	0	0	0	0
○	140054 ISEHARA KYODO HOSP.	6	0	3	0	1	1	0	0	0	1
	140055 TOKAI UNIV.	37	0	20	1	1	12	0	0	0	3
○	140059 KANAGAWA CANCER CENTER	31	0	17	0	1	13	0	0	0	0
	140061 YOKOHAMA CITY UNIV. MED. CENTER	9	0	6	1	0	0	0	0	0	2
○	150006 UNIV. OF YAMANASHI	11	0	5	0	0	4	0	1	0	1
○	160006 SHINSHU UNIV.	18	0	10	1	0	5	1	0	0	1
	170006 FUJI CITY GENERAL HOSP.	6	3	0	0	0	1	0	0	0	2
	170009 SHIZUOKA GENERAL HOSP.	19	13	0	0	0	2	0	0	0	4
	180001 NAGAOKA RED CROSS HOSP.	19	0	8	0	0	1	0	0	0	10
○	180010 NIIGATA CANCER CENTER HOSP.	28	0	18	0	1	8	0	0	0	1
○	190001 TOYAMA UNIV.	11	0	6	1	0	4	0	0	0	0
	190002 TOYAMA RED CROSS HOSP.	9	0	3	1	0	2	0	0	0	3
○	200001 KANAZAWA MED. UNIV.	11	0	4	0	0	4	1	0	0	2
○	200002 KANAZAWA MED. CENTER	13	0	6	3	0	4	0	0	0	0
○	200004 KANAZAWA UNIV.	16	0	5	2	1	5	0	1	0	2
	210002 FUKUI PREF. HOSP.	6	4	0	0	0	2	0	0	0	0
	210003 FUKUI UNIV.	7	7	0	0	0	0	0	0	0	0
	210004 FUKUI RED CROSS HOSP.	7	4	0	0	0	3	0	0	0	0
○	220002 GIFU UNIV.	18	0	10	3	0	5	0	0	0	0
○	220006 OGAKI MUNI. HOSP.	11	1	6	0	0	2	1	0	0	1
○	230001 TOYOHASHI MUNI. HOSP.	23	0	15	1	1	6	0	0	0	0
○	230014 RED CROSS NAGOYA DAIICHI HOSP.	20	0	9	1	0	9	0	1	0	0
	230024 NAGOYA MED. CENTER	7	7	0	0	0	0	0	0	0	0
○	230031 NAGOYA UNIV.	28	1	10	6	2	6	0	0	0	3
○	230034 NAGOYA CITY UNIV.	10	0	3	0	0	7	0	0	0	0
○	230035 FUJITA HEALTH UMIN.	12	0	7	0	0	5	0	0	0	0
	230040 AICHI MED. UNIV.	20	0	8	0	1	6	0	0	0	5
○	230052 AICHI CANCER CENTER	34	0	17	7	2	8	0	0	0	0
○	240002 MIE PREF. GENERAL MED. CENTER	10	0	5	0	0	3	0	0	0	2
	240003 YOKKAICHI MUNI. HOSP.	5	0	2	0	0	1	0	0	0	2
○	240009 MIE UNIV.	21	0	12	3	0	4	0	0	0	2
○	240015 ISE RED CROSS HOSP.	11	0	8	0	0	3	0	0	0	0
○	250001 OHTSU RED CROSS HOSP.	15	0	7	0	0	6	0	0	0	2

	A	B	C	D	E	F	G	H	I	J	K
	Institution	Total No. Treated	no description	Alive with no Evidence of the Disease	Alive with Carcinoma	Alive with or without Carcinoma Unknown	Died of Carcinoma	Died of Other Malignant Tumor	Died of Intercurrent Disease	Cause of Death Unknown	Lost to follow-up
	250003 SHIGA UNIV. OF MED. SCIENCE	6	6	0	0	0	0	0	0	0	0
	250008 SHIGA MED. CENTER FOR ADULTS	9	0	5	0	0	2	0	0	0	2
○	260002 KYOTO 2ND RED CROSS HOSP.	21	0	10	1	1	8	0	0	0	1
	260003 KYOTO PREF. UNIV. OF MED.	15	0	4	0	0	4	0	0	0	7
○	260007 KYOTO 1ST RED CROSS HOSP.	15	0	10	1	0	2	0	0	0	2
○	260009 KYOTO UNIV.	31	1	18	2	0	6	0	0	0	4
	270003 KITANO HOSP.	1	0	0	0	0	0	0	0	0	1
	270007 OSAKA CITY GENERAL HOSP.	22	16	0	0	0	5	0	0	0	1
○	270009 OSAKA NATIONAL HOSP.	16	0	9	0	0	6	0	0	1	0
	270018 NISSAY HOSP.	1	1	0	0	0	0	0	0	0	0
○	270035 OSAKA UNIV.	45	0	20	1	1	15	0	0	0	8
	270041 OSAKA MED. COLL.	29	0	9	3	2	5	0	0	0	10
	270042 KANSAI MED. UNIV.	9	5	0	0	0	2	0	1	0	1
	270056 KINKI UNIV.	32	30	0	0	0	2	0	0	0	0
	270062 OSAKA ROUSAI HOSP.	20	7	0	0	0	10	0	0	0	3
○	270101 OSAKA MED. CENTER FOR CANCER AND CVD	33	0	13	4	1	13	0	0	0	2
	280001 KOBE UNIV.	15	7	0	0	0	0	0	0	0	8
○	280002 KOBE CITY MED. CENTER GENERAL HOSP.	18	0	11	0	0	6	0	0	1	0
	280010 KOBE MED. CENTER	3	0	0	0	0	2	0	0	0	1
○	280015 KANSAI ROSAI HOSP.	21	0	14	2	0	5	0	0	0	0
	280021 HYOGO MED. COLL.	27	27	0	0	0	0	0	0	0	0
	280028 TOYOOKA PUBLIC HOSP.	2	2	0	0	0	0	0	0	0	0
	280030 HIMEJI RED CROSS HOSP.	13	13	0	0	0	0	0	0	0	0
	280031 HIMEJI MED. CENTER	5	5	0	0	0	0	0	0	0	0
○	280033 HYOGO CANCER CENTER	39	0	19	4	1	14	0	0	1	0
○	290003 NARA PREF. NARA HOSP.	7	0	3	2	0	2	0	0	0	0
	290004 TENRI HOSP.	18	12	0	0	0	4	0	0	0	2
	290007 NARA MED. UNIV.	18	0	8	0	0	6	0	0	0	4
○	300002 JAPAN RED CROSS WAKAYAMA MED. CENTER	15	0	10	0	0	2	0	0	0	3
	300003 WAKAYAMA MED. UNIV.	7	6	0	0	0	1	0	0	0	0
○	310001 TOTTORI PREF. CENTRAL HOSP.	7	0	5	0	0	2	0	0	0	0
○	310007 TOTTORI UNIV.	14	0	7	2	0	5	0	0	0	0
○	320003 SHIMANE UNIV.	11	0	8	0	0	3	0	0	0	0
	320004 SHIMANE PREF. CENTRAL HOSP.	13	8	0	0	0	5	0	0	0	0
○	330003 KAWASAKI HOSP.	2	0	0	0	0	2	0	0	0	0
	330004 OKAYAMA SAISEIKAI GENERAL HOSP.	6	6	0	0	0	0	0	0	0	0
	330008 KURASHIKI CENTRAL HOSP.	19	0	5	1	0	9	0	0	0	4
	330010 KURASIKI MED. CENTER	3	1	0	0	0	2	0	0	0	0
○	340001 FUKUYAMA MED. CENTER	5	0	2	0	0	2	0	1	0	0
	340002 ONOMICHI GENERAL HOSP.	4	0	3	0	0	0	0	0	0	1
○	340010 HIROSHIMA CITY ASA HOSP.	13	0	5	2	0	5	0	0	0	1
	340012 HIROSHIMA UNIV.	5	0	4	1	0	0	0	0	0	0
○	340014 HIROSHIMA PREF. HOSP.	16	0	11	0	0	1	0	0	3	1
○	340015 KURE MED. CENTER	8	0	4	1	0	2	0	0	0	1
○	340018 HIROSHIMA GENERAL HOSP.	12	0	7	1	0	3	0	0	0	1
	340031 HIGASHIHIROSHIMA MED. CENTER	1	1	0	0	0	0	0	0	0	0
	350003 TOKUYAMA CENTRAL HOSP.	14	14	0	0	0	0	0	0	0	0
○	350008 YAMAGUCHI RED CROSS HOSP.	12	0	9	1	0	2	0	0	0	0
○	350009 YAMAGUCHI UNIV.	9	0	9	0	0	0	0	0	0	0
	360002 TOKUSHIMA MUNI. HOSP.	3	0	0	0	0	0	1	0	0	2
○	360003 TOKUSHIMA UNIV.	10	0	6	0	0	4	0	0	0	0
○	360005 TOKUSHIMA PREF. CENTRAL HOSP.	5	0	4	0	0	0	0	0	0	1
○	370001 TAKAMATSU RED CROSS HOSP.	5	0	3	0	0	1	0	0	0	1
	370003 KAGAWA PREF. CENTRAL HOSP.	14	14	0	0	0	0	0	0	0	0
○	380001 SHIKOKU CANCER CENTER	34	0	26	2	1	5	0	0	0	0
○	390003 KOCHI HEALTH SCIENCES CENTER	13	0	5	1	1	5	0	0	0	1
○	390006 KOCHI UNIV.	9	0	2	1	1	3	0	1	0	1
○	400008 UNIV. OCCUPATIONAL & ENVIRONMENTAL HEALTH	15	0	6	3	0	6	0	0	0	0
○	400010 KYUSHU MED. CENTER	14	0	4	4	0	3	0	0	0	3
○	400012 KYUSHU UNIV.	42	0	23	4	2	13	0	0	0	0

A		B	C	D	E	F	G	H	I	J	K
Institution		Total No. Treated	no description	Alive with no Evidence of the Disease	Alive with Carcinoma	Alive with or without Carcinoma Unknown	Died of Carcinoma	Died of Other Malignant Tumor	Died of Intercurrent Disease	Cause of Death Unknown	Lost to follow-up
○ 400013	FUKUOKA UNIV.	11	0	6	2	0	3	0	0	0	0
○ 400014	FUKUOKA RED CROSS HOSP.	8	0	4	0	1	2	0	0	0	1
○ 400020	KURUME UNIV.	27	0	13	0	0	10	0	0	0	4
○ 400040	KYUSHU CANCER CENTER	29	0	19	6	0	3	0	0	0	1
○ 410005	SAGA UNIV.	14	0	5	2	0	4	0	1	0	2
○ 420001	NAGASAKI MUNI. HOSP.	12	0	7	0	0	4	0	0	0	1
○ 420002	NAGASAKI UNIV.	21	0	13	1	1	4	0	0	1	1
○ 420003	RED CROSS NAGASAKI ATOMIC BOMB HOSP.	4	3	0	0	0	1	0	0	0	0
○ 420006	SASEBO KYOSAI HOSP.	14	0	6	0	0	7	0	0	0	1
○ 430001	KUMAMOTO MED. CENTER	17	0	6	3	0	4	0	0	0	4
○ 430002	KUMAMOTO UNIV.	29	0	16	1	1	10	0	0	0	1
○ 430003	KUMAMOTO CITY HOSP.	17	0	5	3	0	3	1	0	0	5
○ 440002	OITA PREF. HOSP.	18	0	7	3	0	7	0	0	0	1
○ 440005	OITA UNIV.	12	0	7	1	0	2	0	0	0	2
○ 450001	MIYAZAKI PREF. HOSP.	10	0	5	0	0	4	0	0	0	1
○ 450005	MIYAZAKI UNIV.	5	3	0	0	0	2	0	0	0	0
○ 460001	KAGOSHIMA UNIV.	29	18	0	0	0	5	0	0	0	6
○ 460004	KAGOSHIMA CITY HOSP.	16	0	10	1	0	2	0	0	0	3
○ 470008	RYUKYU UNIV.	30	1	12	1	1	15	0	0	0	0
○ 470010	OKINAWA PREF. CHUBU HOSP.	10	0	5	0	0	4	0	0	0	1
Total		3204	613	1212	197	45	830	9	10	9	279

Table 1. No. of Patients by Stage and Age

Age		~19		20~29		30~39		40~49		50~59		60~69		70~79		80~		Total	
		No.	%	No.	%	No.	%	No.	%	No.	%	No.	%	No.	%	No.	%	No.	%
I	A	9	0.3	25	0.8	49	1.5	77	2.4	163	5.1	96	3.0	51	1.6	17	0.5	487	15.2
	B	1	0.0	3	0.1	4	0.1	8	0.3	15	0.5	2	0.1	3	0.1	1	0.0	37	1.2
	C(b)	3	0.1	16	0.5	44	1.4	105	3.3	142	4.4	67	2.1	29	0.9	7	0.2	413	12.9
	C(1)	0	0.0	0	0.0	2	0.1	9	0.3	19	0.6	9	0.3	4	0.1	1	0.0	44	1.4
	C(2)	2	0.1	3	0.1	8	0.3	34	1.1	46	1.4	26	0.8	12	0.4	0	0.0	131	4.1
	C(a)	5	0.2	8	0.3	12	0.4	30	0.9	54	1.7	37	1.2	19	0.6	6	0.2	171	5.3
	total	20	0.6	55	1.7	119	3.7	263	8.2	439	13.7	237	7.4	118	3.7	32	1.0	1283	40.0
II	A	0	0.0	0	0.0	3	0.1	6	0.2	7	0.2	3	0.1	1	0.0	0	0.0	20	0.6
	B	0	0.0	0	0.0	4	0.1	6	0.2	14	0.4	6	0.2	5	0.2	2	0.1	37	1.2
	C(b)	0	0.0	1	0.0	8	0.3	12	0.4	33	1.0	21	0.7	8	0.3	3	0.1	86	2.7
	C(1)	0	0.0	0	0.0	3	0.1	4	0.1	5	0.2	3	0.1	0	0.0	0	0.0	15	0.5
	C(2)	1	0.0	4	0.1	10	0.3	11	0.3	20	0.6	6	0.2	5	0.2	1	0.0	58	1.8
	C(a)	1	0.0	4	0.1	8	0.3	20	0.6	31	1.0	16	0.5	8	0.3	3	0.1	91	2.8
total	2	0.1	9	0.3	36	1.1	59	1.8	110	3.4	55	1.7	27	0.8	9	0.3	307	9.6	
III	A	1	0.0	0	0.0	2	0.1	6	0.2	13	0.4	5	0.2	2	0.1	2	0.1	31	1.0
	B	0	0.0	4	0.1	5	0.2	21	0.7	47	1.5	27	0.8	11	0.3	4	0.1	119	3.7
	C	5	0.2	15	0.5	46	1.4	147	4.6	312	9.7	222	6.9	139	4.3	32	1.0	918	28.7
	total	6	0.2	19	0.6	53	1.7	174	5.4	372	11.6	254	7.9	152	4.7	38	1.2	1068	33.3
IV	0	0.0	2	0.1	10	0.3	49	1.5	75	2.3	63	2.0	38	1.2	9	0.3	246	7.7	
Neoadjuvant Chemotherapy	0	0.0	1	0.0	6	0.2	40	1.3	98	3.1	82	2.6	60	1.9	5	0.2	292	9.1	
Unknown	0	0.0	0	0.0	1	0.0	0	0.0	1	0.0	1	0.0	4	0.1	1	0.0	8	0.3	
Total	28	0.9	86	2.7	225	7.0	585	18.3	1095	34.2	692	21.6	399	12.5	94	2.9	3204		

Table 2. 5-Year Results, Treatment Started in 2006

5-year result	No. of patients	%
Alive with no Evidence of the Disease	1086	54.3
Alive with Carcinoma	149	7.4
Alive with or without Carcinoma Unknown	41	2.1
Died of Carcinoma	619	30.9
Died of Other Malignant Tumor	5	0.3
Died of Intercurrent Disease	8	0.4
Cause of Death Unknown	8	0.4
Lost to follow-up	86	4.3
Total	2002	

Table 3. 5-Year Survival by Stage, Treatment Started in 2006

FIGO Stage		Patients treated		5-year survival		Lost to follow-up
		No.		%		
I	A	301	805	93.8	90.6	43/805 (5.3%)
	B	24		78.3		
	C(b)	284		91.2		
	C(1)	21		81.0		
	C(2)	78		86.7		
	C(a)	97		87.5		
II	A	13	191	100.0	82.9	8/191 (4.2%)
	B	27		80.8		
	C(b)	51		80.1		
	C(1)	11		81.8		
	C(2)	31		80.3		
	C(a)	58		84.0		
III	A	23	641	65.2	48.7	23/641 (3.6%)
	B	73		56.7		
	C	545		47.0		
IV		152		40.9		5/152 (3.3%)
Neoadjuvant Chemotherapy		208		40.3		5/208 (2.4%)
Unknown		5		0.0		
Total		2002		67.2		

**Table 4. 5-Year Survival by Stage, Treatment Started in 2006
Surface Epithelial-Stromal Tumors**

FIGO Stage		Patients treated		5-year survival	
		No.		%	
I	A	268	746	94.2	90.7
	B	22		76.2	
	C(b)	273		91.6	
	C(1)	21		81.0	
	C(2)	76		86.3	
	C(a)	86		87.0	
II	A	12	180	100.0	81.8
	B	27		80.8	
	C(b)	49		79.2	
	C(1)	11		81.8	
	C(2)	29		78.9	
	C(a)	52		82.0	
III	A	23	615	65.2	48.9
	B	71		56.9	
	C	521		47.1	
IV		148		41.0	
Neoadjuvant Chemotherapy		207		40.5	
Unknown		2		0.0	
Total		1898		66.8	

Table 5. 5-Year Survival by Histology, Treatment Started in 2006

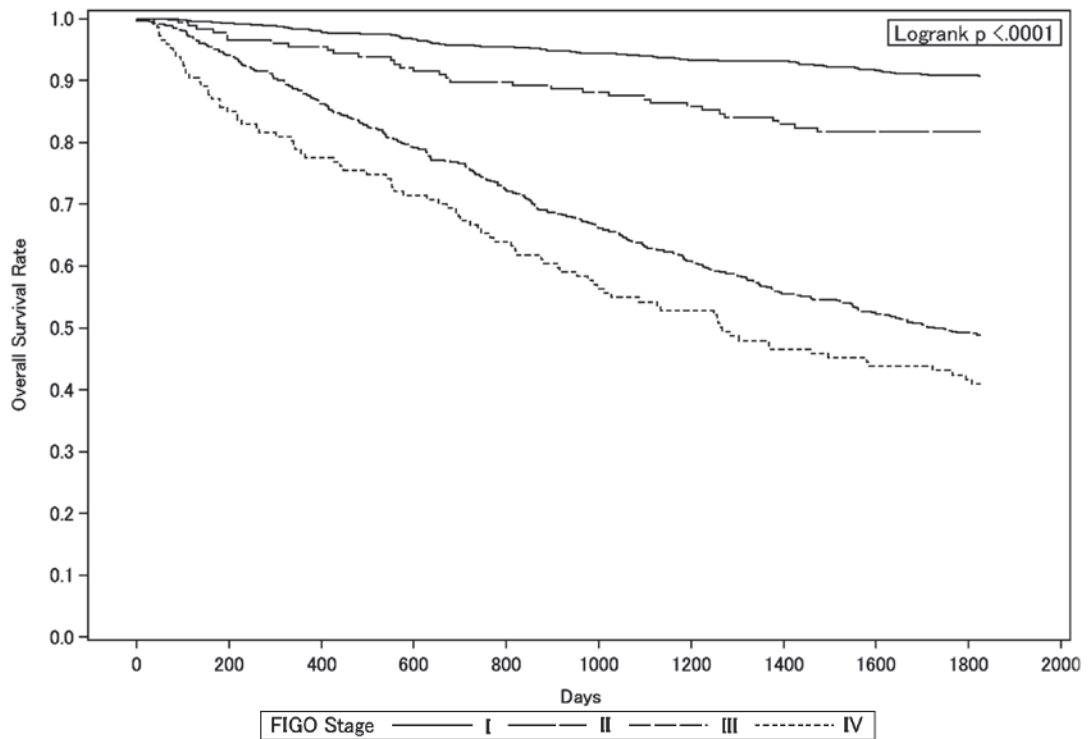
Stage and Histological Type	FIGO Stage	Patients treated	5-year survival
		No.	%
Sex Cord/Stromal Tumors	I	5	60.0
	II	0	0.0
	III	0	0.0
	IV	0	0.0
	Neoadjuvant Chemotherapy	0	0.0
Germ Cell Tumors	I	50	91.7
	II	10	100.0
	III	19	63.2
	IV	3	0.0
	Neoadjuvant Chemotherapy	0	0.0
Immature Teratoma (G3)	I	6	100.0
	II	1	100.0
	III	1	100.0
	IV	0	0.0
	Neoadjuvant Chemotherapy	0	0.0
Dysgerminoma	I	7	100.0
	II	6	100.0
	III	5	100.0
	IV	1	0.0
	Neoadjuvant Chemotherapy	0	0.0
Yolk Sac Tumor	I	14	100.0
	II	0	0.0
	III	2	50.0
	IV	1	0.0
	Neoadjuvant Chemotherapy	0	0.0

Table 6. 5-Year Survival by Stage and Histological Type, Treatment Started in 2006

FIGO Stage	Histology	Patients treated		5-year survival
		No.	%	%
I	Serous	97	13.0	92.2
	Mucinous	176	23.6	91.1
	Endometrioid	171	22.9	93.5
	Clear	264	35.4	88.8
	Other	38	5.1	86.6
II	Serous	53	29.4	92.1
	Mucinous	8	4.4	71.4
	Endometrioid	54	30.0	90.7
	Clear	49	27.2	64.3
	Other	16	8.9	75.0
III	Serous	347	56.4	52.4
	Mucinous	34	5.5	29.4
	Endometrioid	89	14.5	66.0
	Clear	87	14.2	33.4
	Other	58	9.4	37.1
IV	Serous	81	54.7	39.4
	Mucinous	10	6.8	40.0
	Endometrioid	16	10.8	37.5
	Clear	19	12.8	38.9
	Other	22	14.9	54.5
Neoadjuvant Chemotherapy	Serous	148	71.5	39.6
	Mucinous	6	2.9	50.0
	Endometrioid	11	5.3	45.5
	Clear	13	6.3	53.8
	Other	29	14.0	35.9
Unknown	Serous	0	0.0	-
	Mucinous	1	50.0	-
	Endometrioid	0	0.0	-
	Clear	0	0.0	-
	Other	1	50.0	-

Figure 1.

Kaplan-Meier Estimated Overall Survival Curves of Ovarian Patients by FIGO Stage, Treatment Started in 2006 (Surface Epithelial-Stromal Tumors)

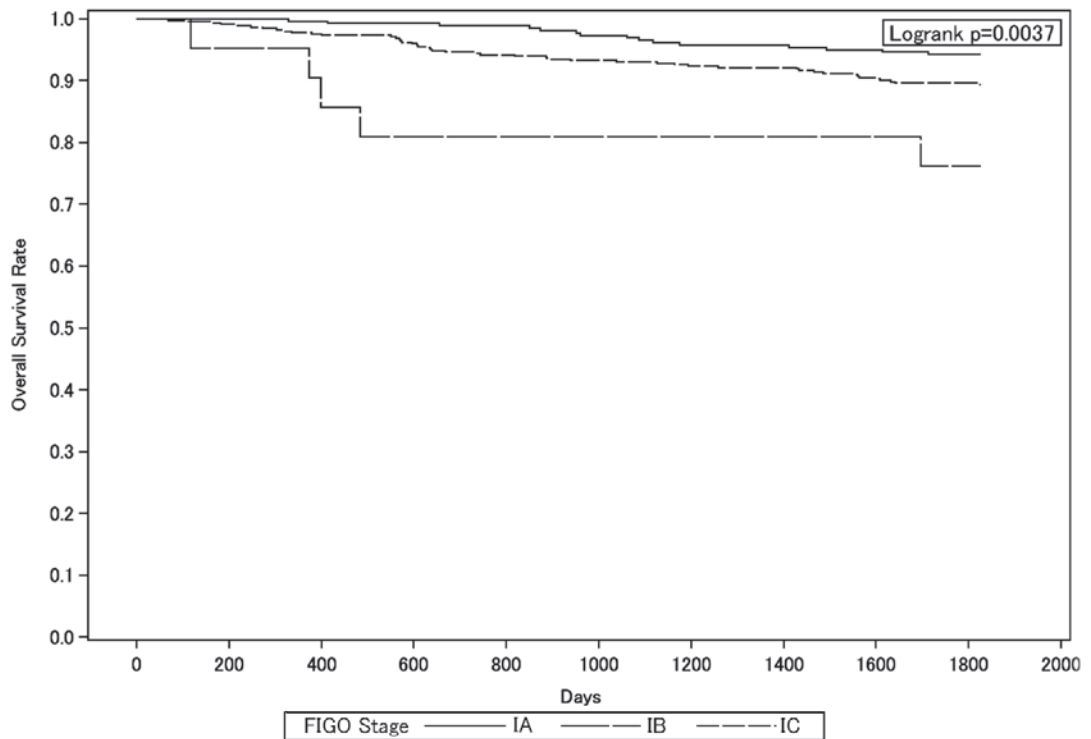


Test of Equality over Strata			
Test	Chi-Square	DF	Pr > Chi-Square
Log-rank	369.1689	3	<.0001
Wilcoxon	359.8340	3	<.0001
-2Log (LR)	376.2126	3	<.0001

Adjustment for Multiple Comparisons for the Log-rank Test				
Strata Comparison		Chi-Square	p-Values	
FIGO Stage	FIGO Stage		Raw	Tukey-Kramer
I	II	105.1000	<.0001	<.0001
I	III	282.7000	<.0001	<.0001
I	IV	285.7000	<.0001	<.0001
II	III	159.5000	<.0001	<.0001
II	IV	65.7945	<.0001	<.0001
III	IV	60.7874	<.0001	<.0001

Figure 2.

Kaplan-Meier Estimated Overall Survival Curves of Ovarian Patients by FIGO Stage I Substage, Treatment Started in 2006 (Surface Epithelial-Stromal Tumors)

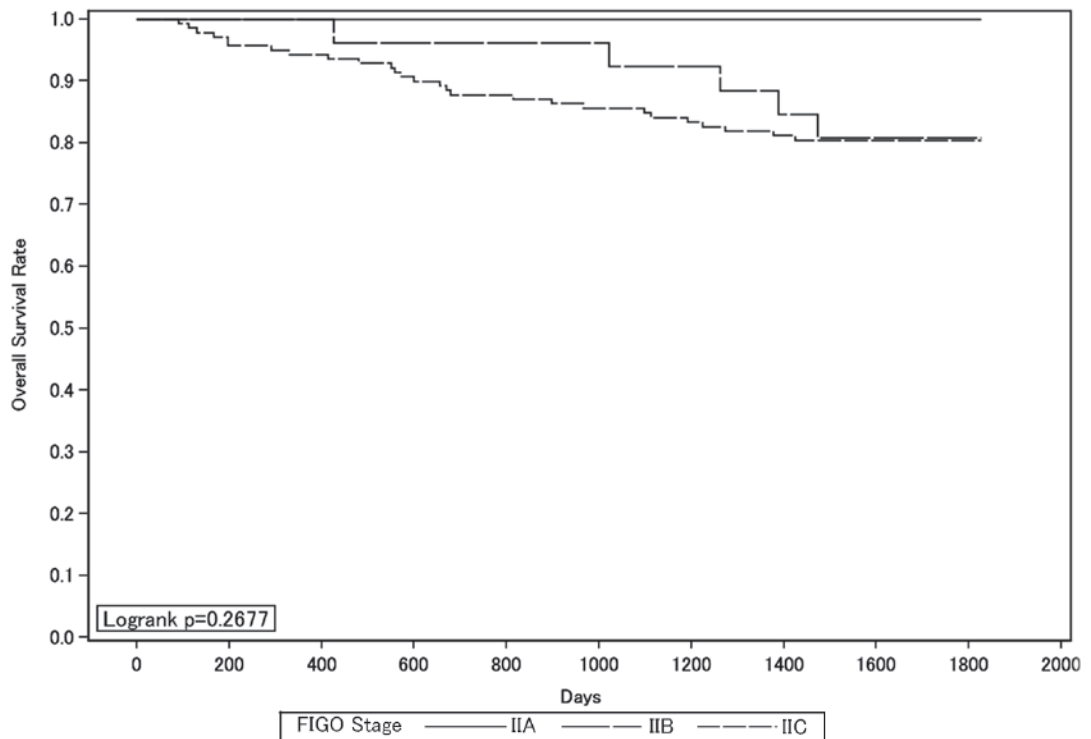


Test of Equality over Strata			
Test	Chi-Square	DF	Pr > Chi-Square
Log-rank	11.1978	2	0.0037
Wilcoxon	11.8777	2	0.0026
-2Log (LR)	9.5964	2	0.0082

Adjustment for Multiple Comparisons for the Log-rank Test				
Strata Comparison		Chi-Square	p-Values	
FIGO Stage	FIGO Stage		Raw	Tukey-Kramer
IA	IB	9.2144	0.0024	0.0068
IA	IC	4.3152	0.0378	0.0946
IB	IC	0.5267	0.4680	0.7482

Figure 3.

Kaplan-Meier Estimated Overall Survival Curves of Ovarian Patients by FIGO Stage II Substage, Treatment Started in 2006 (Surface Epithelial-Stromal Tumors)

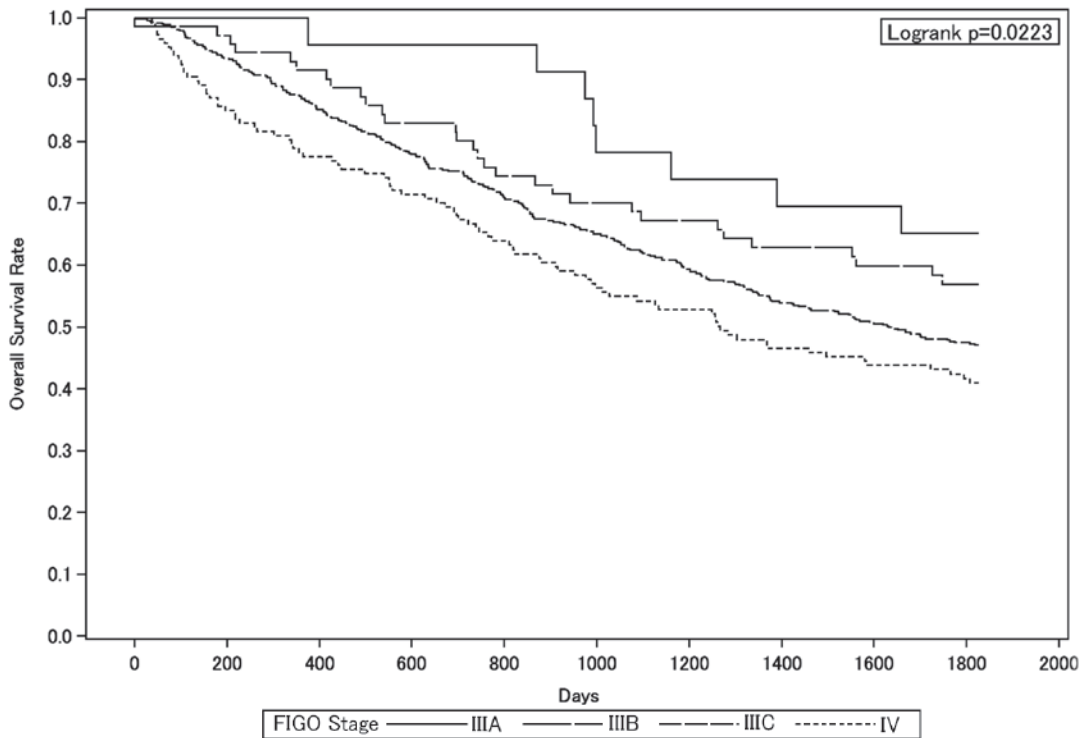


Test of Equality over Strata			
Test	Chi-Square	DF	Pr > Chi-Square
Log-rank	2.6358	2	0.2677
Wilcoxon	2.6895	2	0.2606
-2Log (LR)	5.1477	2	0.0762

Adjustment for Multiple Comparisons for the Log-rank Test				
Strata Comparison		Chi-Square	p-Values	
FIGO Stage	FIGO Stage		Raw	Tukey-Kramer
IIA	IIB	0.8289	0.3626	0.6337
IIA	IIC	1.9696	0.1605	0.3391
IIB	IIC	0.3130	0.5759	0.8416

Figure 4.

Kaplan-Meier Estimated Overall Survival Curves of Ovarian Patients by FIGO Stage III Substage, IV Stage, Treatment Started in 2006 (Surface Epithelial-Stromal Tumors)

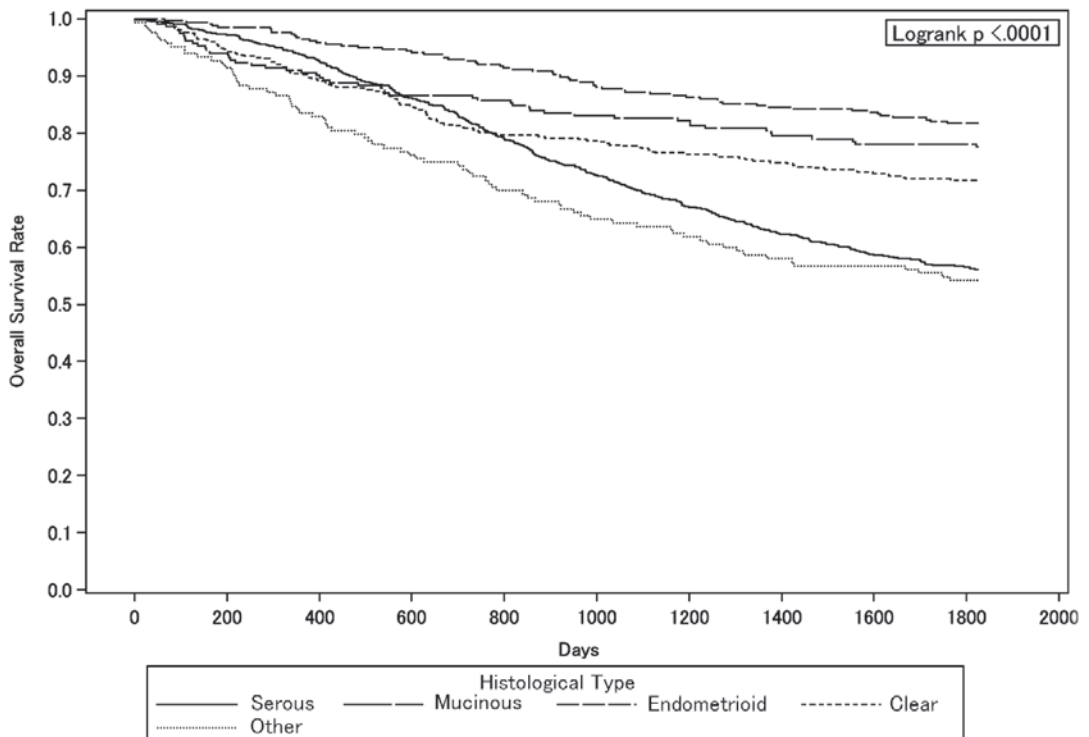


Test of Equality over Strata			
Test	Chi-Square	DF	Pr > Chi-Square
Log-rank	9.6038	3	0.0223
Wilcoxon	11.8049	3	0.0081
-2Log (LR)	10.2427	3	0.0166

Adjustment for Multiple Comparisons for the Log-rank Test				
Strata Comparison		Chi-Square	p-Values	
FIGO Stage	FIGO Stage		Raw	Tukey-Kramer
IIIA	IIIB	0.1758	0.6750	0.9752
IIIA	IIIC	0.4208	0.5166	0.9161
IIIA	IV	7.1627	0.0074	0.0374
IIIB	IIIC	0.5873	0.4435	0.8696
IIIB	IV	6.5555	0.0105	0.0512
IIIC	IV	1.1256	0.2887	0.7134

Figure 5.

Kaplan-Meier Estimated Overall Survival Curves of Ovarian Patients by Histological Type, Treatment Started in 2006

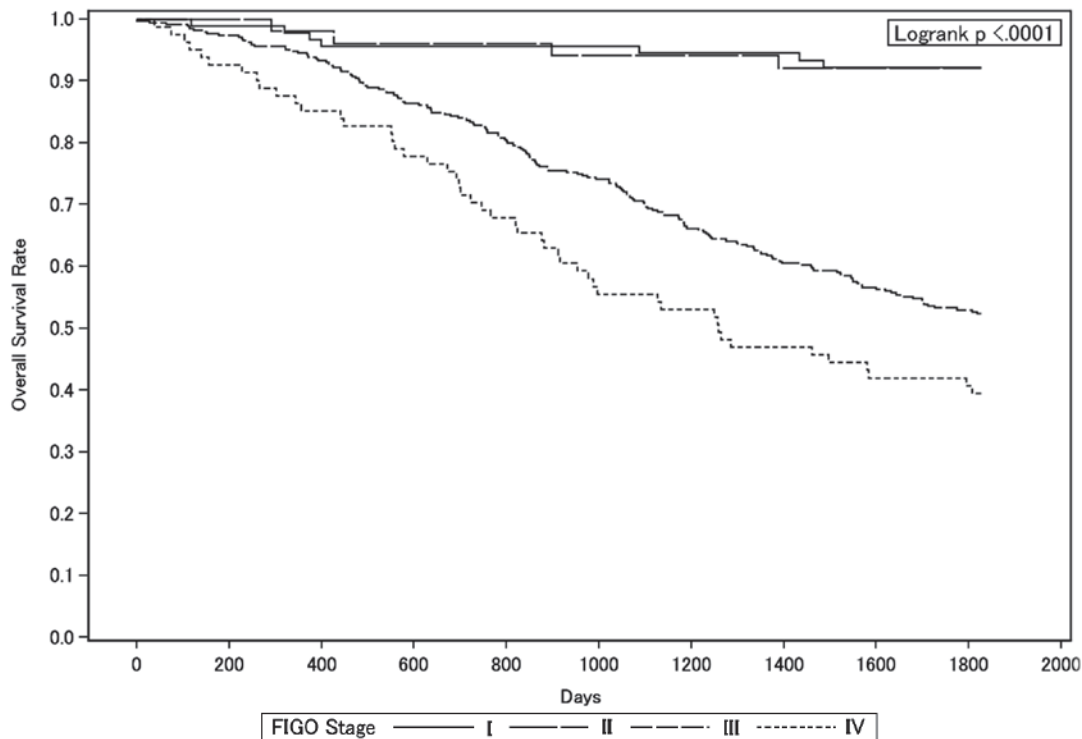


Test of Equality over Strata			
Test	Chi-Square	DF	Pr > Chi-Square
Log-rank	91.1331	4	<.0001
Wilcoxon	83.0552	4	<.0001
-2Log (LR)	98.2475	4	<.0001

Adjustment for Multiple Comparisons for the Log-rank Test				
Strata Comparison		Chi-Square	p-Values	
Histological Type	Histological Type		Raw	Tukey-Kramer
Serous	Mucinous	46.0271	<.0001	<.0001
Serous	Endometrioid	64.5860	<.0001	<.0001
Serous	Clear	31.0272	<.0001	<.0001
Serous	Other	14.6554	0.0001	0.0012
Mucinous	Endometrioid	6.2607	0.0123	0.0901
Mucinous	Clear	0.1812	0.6703	0.9932
Mucinous	Other	23.8135	<.0001	<.0001
Endometrioid	Clear	6.5097	0.0107	0.0796
Endometrioid	Other	49.8043	<.0001	<.0001
Clear	Other	13.2954	0.0003	0.0025

Figure 6.

Kaplan-Meier Estimated Overall Survival Curves of Ovarian Patients with Serous by FIGO Stage, Treatment Started in 2006

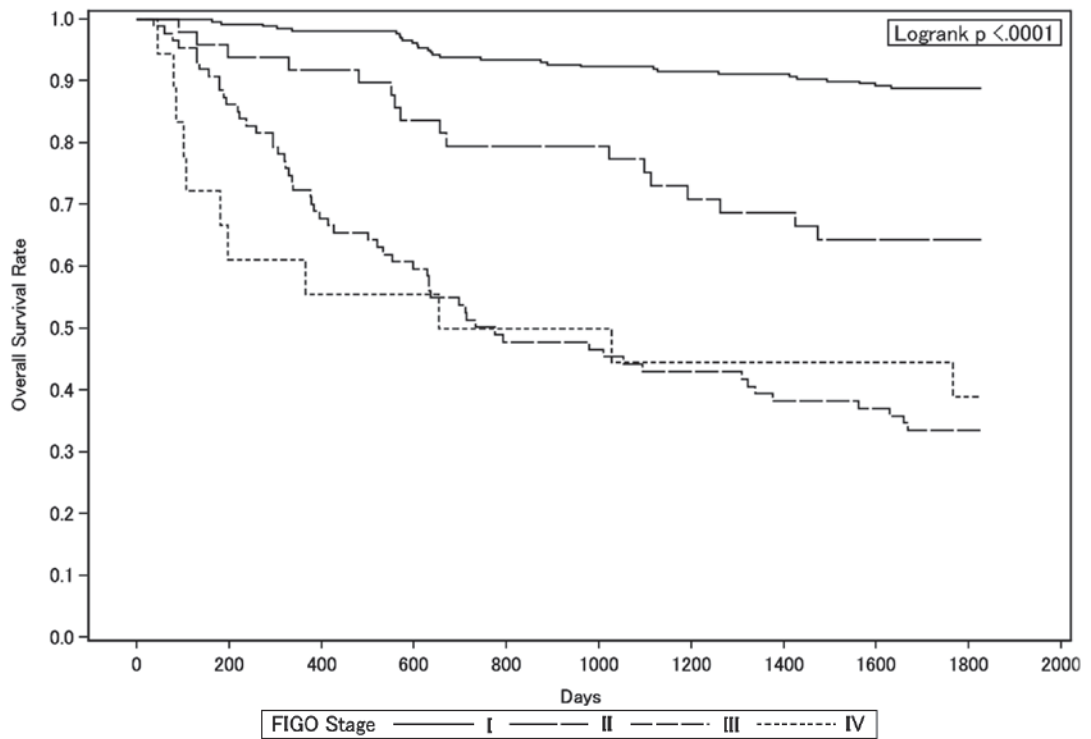


Test of Equality over Strata			
Test	Chi-Square	DF	Pr > Chi-Square
Log-rank	75.6186	3	<.0001
Wilcoxon	72.4184	3	<.0001
-2Log (LR)	93.9130	3	<.0001

Adjustment for Multiple Comparisons for the Log-rank Test				
Strata Comparison		Chi-Square	p-Values	
FIGO Stage	FIGO Stage		Raw	Tukey-Kramer
I	II	3.6225	0.0570	0.2266
I	III	33.7685	<.0001	<.0001
I	IV	51.1714	<.0001	<.0001
II	III	26.9489	<.0001	<.0001
II	IV	37.3505	<.0001	<.0001
III	IV	0.8572	0.3545	0.7910

Figure 7.

Kaplan-Meier Estimated Overall Survival Curves of Ovarian Patients with Clear by FIGO Stage, Treatment Started in 2006

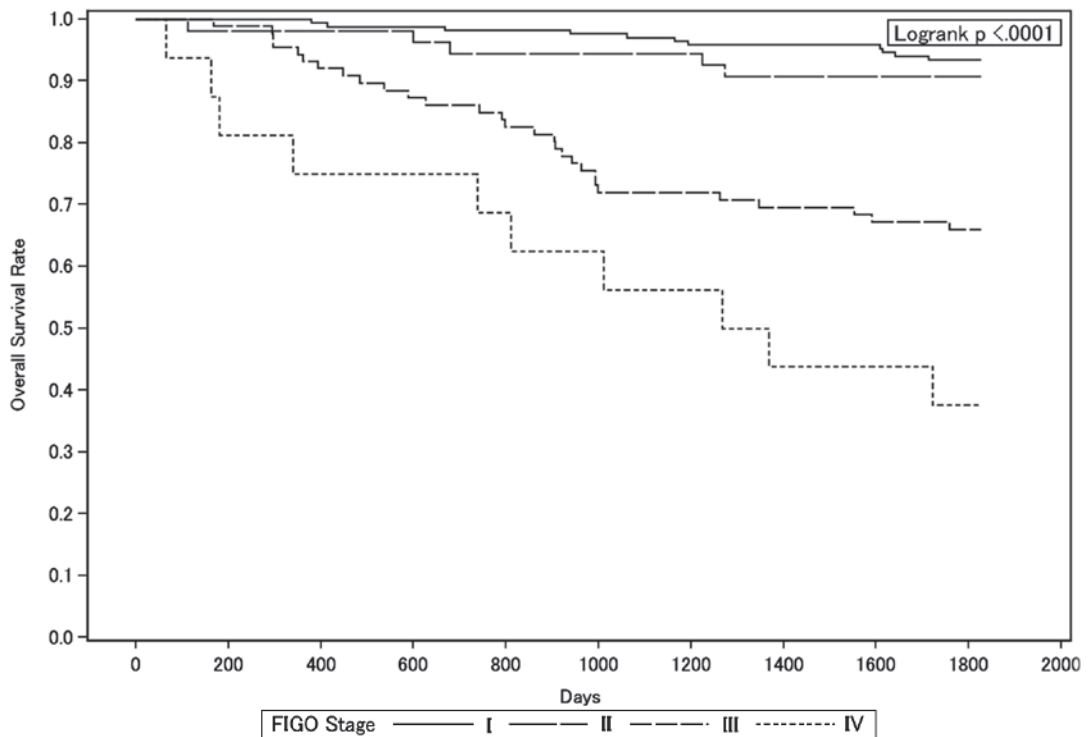


Test of Equality over Strata			
Test	Chi-Square	DF	Pr > Chi-Square
Log-rank	144.4266	3	<.0001
Wilcoxon	145.3707	3	<.0001
-2Log (LR)	122.5435	3	<.0001

Adjustment for Multiple Comparisons for the Log-rank Test				
Strata Comparison		Chi-Square	p-Values	
FIGO Stage	FIGO Stage		Raw	Tukey-Kramer
I	II	57.3117	<.0001	<.0001
I	III	133.4000	<.0001	<.0001
I	IV	111.2000	<.0001	<.0001
II	III	42.4328	<.0001	<.0001
II	IV	0.8979	0.3433	0.7791
III	IV	54.5152	<.0001	<.0001

Figure 8.

Kaplan-Meier Estimated Overall Survival Curves of Ovarian Patients with Endometrioid by FIGO Stage, Treatment Started in 2006

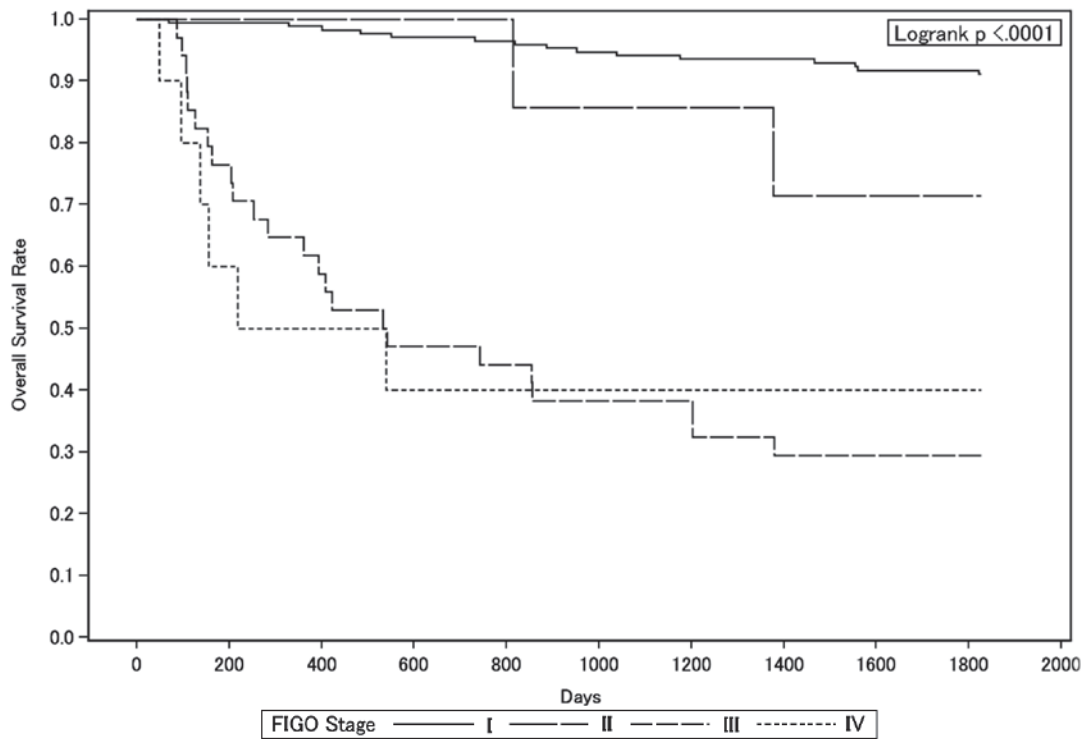


Test of Equality over Strata			
Test	Chi-Square	DF	Pr > Chi-Square
Log-rank	68.5961	3	<.0001
Wilcoxon	69.1442	3	<.0001
-2Log (LR)	51.2717	3	<.0001

Adjustment for Multiple Comparisons for the Log-rank Test				
Strata Comparison		Chi-Square	p-Values	
FIGO Stage	FIGO Stage		Raw	Tukey-Kramer
I	II	7.1865	0.0073	0.0369
I	III	33.8620	<.0001	<.0001
I	IV	43.7744	<.0001	<.0001
II	III	19.1283	<.0001	<.0001
II	IV	15.1849	<.0001	0.0006
III	IV	5.0968	0.0240	0.1081

Figure 9.

Kaplan-Meier Estimated Overall Survival Curves of Ovarian Patients with Mucinous by FIGO Stage, Treatment Started in 2006



Test of Equality over Strata			
Test	Chi-Square	DF	Pr > Chi-Square
Log-rank	117.3074	3	<.0001
Wilcoxon	119.3681	3	<.0001
-2Log (LR)	80.2077	3	<.0001

Adjustment for Multiple Comparisons for the Log-rank Test				
Strata Comparison		Chi-Square	p-Values	
FIGO Stage	FIGO Stage		Raw	Tukey-Kramer
I	II	58.7406	<.0001	<.0001
I	III	105.3000	<.0001	<.0001
I	IV	94.8945	<.0001	<.0001
II	III	58.5171	<.0001	<.0001
II	IV	7.4794	0.0062	0.0317
III	IV	37.4565	<.0001	<.0001

卵巢境界悪性腫瘍治療成績

Statement for the Year 2006, Inclusive, Borderline Ovarian Tumor

Table A. 5-Year Results, Stage I-IV

	A	B	C	D	E	F	G	H	I	J	K
	Institution	Total No. Treated	no description	Alive with no Evidence of the Disease	Alive with Carcinoma	Alive with or without Carcinoma Unknown	Died of Carcinoma	Died of Other Malignant Tumor	Died of Intercurrent Disease	Cause of Death Unknown	Lost to follow-up
	010003	HOKKAIDO CANCER CENTER	7	7	0	0	0	0	0	0	0
	010022	JR SAPPORO HOSP.	2	2	0	0	0	0	0	0	0
○	010025	SAPPORO MED. UNIV.	8	0	8	0	0	0	0	0	0
○	010027	HOKKAIDO UNIV.	3	0	3	0	0	0	0	0	0
○	010028	KKR SAPPORO MED. CENTER	3	0	3	0	0	0	0	0	0
	010037	ASAHIKAWA CITY HOSP.	2	2	0	0	0	0	0	0	0
○	010040	ASAHIKAWA MED. COLL.	5	0	4	0	0	0	0	0	1
○	020012	HIROSAKI UNIV.	4	0	4	0	0	0	0	0	0
○	020017	MISAWA CITY HOSP.	1	0	1	0	0	0	0	0	0
	040004	TOHOKU UNIV.	9	0	5	0	1	0	0	0	3
	050003	AKITA UNIV.	3	1	2	0	0	0	0	0	0
○	060002	YAMAGATA PREF. CENTRAL HOSP.	1	0	1	0	0	0	0	0	0
○	060005	YAMAGATA UNIV.	1	0	1	0	0	0	0	0	0
○	070003	FUKUSHIMA MED. UNIV.	3	0	2	1	0	0	0	0	0
	080003	KASUMIGAUURA MED. CENTER	8	5	1	1	0	1	0	0	0
	080006	TSUKUBA GAKUEN HOSP.	2	0	0	0	0	0	0	0	2
	080007	TSUKUBA UNIV.	17	0	12	0	0	0	0	0	5
	080021	HITACHI GENERAL HOSP.	5	5	0	0	0	0	0	0	0
○	080031	TSUKUBA MED. CENTER	2	0	2	0	0	0	0	0	0
○	090001	TOCHIGI NATIONAL HOSP.	1	0	1	0	0	0	0	0	0
○	090005	SAISEIKAI UTSUNOMIYA HOSP.	1	0	1	0	0	0	0	0	0
○	090011	ASHIKAGA RED CROSS HOSP.	5	0	5	0	0	0	0	0	0
○	090015	JICHI MED. UNIV.	11	1	0	9	0	0	0	0	1
○	090016	TOCHIGI CANCER CENTER	5	0	5	0	0	0	0	0	0
	100022	GUNMA PREF. CANCER CENTER	4	0	1	0	0	0	0	0	3
○	110008	SAITAMA SHAKAI HOKEN HOSP.	4	0	4	0	0	0	0	0	0
	110014	KOSHIGAYA MUNI. HOSP.	6	1	4	0	0	0	0	0	1
○	110023	SAITAMA NATIONAL HOSP.	3	0	2	0	0	1	0	0	0
	110027	NATIONAL DEFENSE MED. COLL.	4	4	0	0	0	0	0	0	0
○	110030	SAITAMA CANCER CENTER	5	0	5	0	0	0	0	0	0
○	120005	CHIBA UNIV.	2	0	2	0	0	0	0	0	0
	120009	NIPPON MED. SCH. CHIBA HOKUSOU HOSP.	8	8	0	0	0	0	0	0	0
	120012	MATSUDO CITY HOSP.	3	3	0	0	0	0	0	0	0
	120015	TOKYO DENTAL COLL. ICHIKAEA GENERAL HOSP.	2	0	1	0	0	0	0	0	1
	120021	JIKEI UNIV. KASHIWA HOSP.	14	13	0	0	0	0	0	0	1
○	120023	JUNTENDO UNIV. URAYASU HOSP.	7	0	6	1	0	0	0	0	0
	120029	ASAHI CENTRAL HOSP.	4	0	2	0	1	0	0	0	1
○	120035	KAMEDA MED. CENTER	7	0	5	0	0	0	1	0	1
○	120042	CHIBA CANCER CENTER	3	0	3	0	0	0	0	0	0
	130005	MITUI MEMORIAL HOSP.	6	0	4	0	0	0	0	0	2
○	130009	NATIONAL CANCER CENTER	5	0	5	0	0	0	0	0	0
○	130013	JIKEI UNIV.	15	0	13	0	1	0	0	1	0
○	130023	JUNTENDO UNIV.	12	0	8	2	0	0	1	0	1
	130024	TOKYO MED. DENT. UNIV.	1	1	0	0	0	0	0	0	0
	130025	NIPPON MED. SCH.	11	0	3	0	0	1	0	0	7
	130029	TOKYO WOMENS MED. UNIV. MED. CENTER EAST	5	0	3	0	0	0	0	0	2
	130034	JIKEI UNIV. KATSUSHIKA MED. CENTER	6	6	0	0	0	0	0	0	0
	130038	TOKYO METRO. BOKUTOH HOSP.	8	8	0	0	0	0	0	0	0
○	130044	NTT MED. CENTER TOKYO	3	0	3	0	0	0	0	0	0
	130046	SHOWA UNIV.	11	0	8	0	0	0	0	0	3
○	130055	RED CROSS MED. CENTER	3	0	2	0	0	1	0	0	0
○	130063	KOSEI CENTRAL HOSP.	1	0	1	0	0	0	0	0	0

	A	B	C	D	E	F	G	H	I	J	K
	Institution	Total No. Treated	no description	Alive with no Evidence of the Disease	Alive with Carcinoma	Alive with or without Carcinoma Unknown	Died of Carcinoma	Died of Other Malignant Tumor	Died of Intercurrent Disease	Cause of Death Unknown	Lost to follow-up
	270009	OSAKA NATIONAL HOSP.	8	0	4	0	0	0	0	0	4
○	270013	OSAKA POLICE HOSP.	2	0	2	0	0	0	0	0	0
	270041	OSAKA MED. COLL.	2	0	1	0	0	0	0	0	1
	270042	KANSAI MED. UNIV.	8	6	0	0	0	0	0	0	2
	270056	KINKI UNIV.	2	2	0	0	0	0	0	0	0
	270062	OSAKA ROUSAI HOSP.	2	1	0	0	0	0	0	0	1
	270101	OSAKA MED. CENTER FOR CANCER AND CVD	2	0	1	0	0	0	0	0	1
○	280002	KOBE CITY MED. CENTER GENERAL HOSP.	2	0	2	0	0	0	0	0	0
○	280015	KANSAI ROSAI HOSP.	3	0	3	0	0	0	0	0	0
	280021	HYOGO MED. COLL.	1	1	0	0	0	0	0	0	0
	280028	TOYOOKA PUBLIC HOSP.	6	6	0	0	0	0	0	0	0
	280030	HIMEJI RED CROSS HOSP.	4	4	0	0	0	0	0	0	0
	280031	HIMEJI MED. CENTER	2	2	0	0	0	0	0	0	0
○	280033	HYOGO CANCER CENTER	8	0	8	0	0	0	0	0	0
	290004	TENRI HOSP.	5	5	0	0	0	0	0	0	0
	290007	NARA MED. UNIV.	2	0	0	0	0	0	0	0	2
	300002	JAPAN RED CROSS WAKAYAMA MED. CENTER	10	0	4	1	0	0	0	0	5
	300003	WAKAYAMA MED. UNIV.	10	10	0	0	0	0	0	0	0
○	310001	TOTTORI PREF. CENTRAL HOSP.	1	0	1	0	0	0	0	0	0
○	310007	TOTTORI UNIV.	3	0	2	1	0	0	0	0	0
○	330003	KAWASAKI HOSP.	2	0	2	0	0	0	0	0	0
	330004	OKAYAMA SAISEIKAI GENERAL HOSP.	3	3	0	0	0	0	0	0	0
	330008	KURASHIKI CENTRAL HOSP.	6	0	3	0	0	0	0	0	3
○	340001	FUKUYAMA MED. CENTER	4	0	4	0	0	0	0	0	0
○	340002	ONOMICHI GENERAL HOSP.	4	0	3	0	1	0	0	0	0
	340010	HIROSHIMA CITY ASA HOSP.	5	0	2	0	1	0	0	0	2
○	340012	HIROSHIMA UNIV.	1	0	1	0	0	0	0	0	0
	340014	HIROSHIMA PREF. HOSP.	5	0	4	0	0	0	0	1	0
○	340015	KURE MED. CENTER	5	0	5	0	0	0	0	0	0
○	340018	HIROSHIMA GENERAL HOSP.	2	0	2	0	0	0	0	0	0
	350003	TOKUYAMA CENTRAL HOSP.	3	3	0	0	0	0	0	0	0
	350008	YAMAGUCHI RED CROSS HOSP.	1	0	0	0	0	0	0	0	1
○	350009	YAMAGUCHI UNIV.	4	0	4	0	0	0	0	0	0
	360002	TOKUSHIMA MUNI. HOSP.	4	0	3	0	0	0	0	0	1
	360003	TOKUSHIMA UNIV.	5	0	3	0	0	0	0	0	2
	360005	TOKUSHIMA PREF. CENTRAL HOSP.	3	0	2	0	0	0	0	0	1
	370001	TAKAMATSU RED CROSS HOSP.	6	0	1	1	0	0	0	0	4
○	370002	TAKAMATSU MUNI. HOSP.	1	0	0	0	1	0	0	0	0
	370003	KAGAWA PREF. CENTRAL HOSP.	3	3	0	0	0	0	0	0	0
○	380001	SHIKOKU CANCER CENTER	9	0	8	0	0	0	0	0	1
	390003	KOCHI HEALTH SCIENCES CENTER	4	0	3	0	0	0	0	0	1
○	400008	UNIV. OCCUPATIONAL & ENVIRONMENTAL HEALTH	3	0	3	0	0	0	0	0	0
○	400012	KYUSHU UNIV.	11	0	11	0	0	0	0	0	0
○	400013	FUKUOKA UNIV.	14	0	10	1	0	2	0	1	0
	400014	FUKUOKA RED CROSS HOSP.	4	0	1	0	0	0	0	0	3
○	400040	KYUSHU CANCER CENTER	5	0	5	0	0	0	0	0	0
○	410005	SAGA UNIV.	6	0	5	0	0	0	0	0	1
	420001	NAGASAKI MUNI. HOSP.	5	0	3	0	0	0	0	0	2
	420002	NAGASAKI UNIV.	4	0	3	0	0	0	0	0	1
○	420006	SASEBO KYOSAI HOSP.	4	0	4	0	0	0	0	0	0
	430001	KUMAMOTO MED. CENTER	3	0	1	0	0	0	0	0	2
	430002	KUMAMOTO UNIV.	7	0	3	0	0	0	0	0	4
○	430003	KUMAMOTO CITY HOSP.	5	0	4	0	0	0	0	0	1
	440002	OITA PREF. HOSP.	3	0	2	0	0	0	0	0	1
○	440005	OITA UNIV.	5	0	5	0	0	0	0	0	0
	450001	MIYAZAKI PREF. HOSP.	10	0	6	0	0	0	0	1	3
	460001	KAGOSHIMA UNIV.	6	5	0	0	0	0	0	0	1

A		B	C	D	E	F	G	H	I	J	K
Institution		Total No. Treated	no description	Alive with no Evidence of the Disease	Alive with Carcinoma	Alive with or without Carcinoma Unknown	Died of Carcinoma	Died of Other Malignant Tumor	Died of Intercurrent Disease	Cause of Death Unknown	Lost to follow-up
460004	KAGOSHIMA CITY HOSP.	6	0	4	0	0	0	0	0	0	2
○ 470008	RYUKYU UNIV.	4	0	4	0	0	0	0	0	0	0
○ 470010	OKINAWA PREF. CHUBU HOSP.	6	0	6	0	0	0	0	0	0	0
Total		836	185	472	20	6	9	2	2	4	136

Table 1. No. of Patients by Stage and Age

Age		~19		20~29		30~39		40~49		50~59		60~69		70~79		80~		Total	
		No.	%	No.	%	No.	%	No.	%	No.	%	No.	%	No.	%	No.	%	No.	%
I	A	27	3.2	68	8.1	99	11.8	103	12.3	107	12.8	97	11.6	55	6.6	20	2.4	576	68.9
	B	0	0.0	0	0.0	2	0.2	7	0.8	6	0.7	1	0.1	3	0.4	1	0.1	20	2.4
	C(b)	1	0.1	19	2.3	23	2.8	11	1.3	21	2.5	19	2.3	7	0.8	5	0.6	106	12.7
	C(1)	0	0.0	2	0.2	4	0.5	1	0.1	1	0.1	3	0.4	2	0.2	0	0.0	13	1.6
	C(2)	1	0.1	2	0.2	3	0.4	3	0.4	4	0.5	3	0.4	0	0.0	1	0.1	17	2.0
	C(a)	2	0.2	5	0.6	14	1.7	9	1.1	7	0.8	6	0.7	7	0.8	1	0.1	51	6.1
	total	31	3.7	96	11.5	145	17.3	134	16.0	146	17.5	129	15.4	74	8.9	28	3.4	783	93.7
II	A	0	0.0	0	0.0	0	0.0	0	0.0	0	0.0	0	0.0	0	0.0	0	0.0	0	0.0
	B	0	0.0	0	0.0	0	0.0	0	0.0	0	0.0	0	0.0	0	0.0	0	0.0	0	0.0
	C(b)	0	0.0	0	0.0	0	0.0	0	0.0	1	0.1	2	0.2	0	0.0	0	0.0	3	0.4
	C(1)	0	0.0	0	0.0	1	0.1	1	0.1	0	0.0	0	0.0	0	0.0	0	0.0	2	0.2
	C(2)	0	0.0	0	0.0	1	0.1	0	0.0	2	0.2	2	0.2	0	0.0	0	0.0	5	0.6
	C(a)	0	0.0	1	0.1	2	0.2	1	0.1	1	0.1	2	0.2	1	0.1	0	0.0	8	1.0
	total	0	0.0	1	0.1	4	0.5	2	0.2	4	0.5	6	0.7	1	0.1	0	0.0	18	2.2
III	A	0	0.0	0	0.0	3	0.4	1	0.1	0	0.0	1	0.1	2	0.2	0	0.0	7	0.8
	B	0	0.0	0	0.0	2	0.2	1	0.1	1	0.1	2	0.2	1	0.1	1	0.1	8	1.0
	C	0	0.0	1	0.1	3	0.4	2	0.2	4	0.5	1	0.1	2	0.2	0	0.0	13	1.6
	total	0	0.0	1	0.1	8	1.0	4	0.5	5	0.6	4	0.5	5	0.6	1	0.1	28	3.4
IV		0	0.0	0	0.0	1	0.1	0	0.0	0	0.0	1	0.1	0	0.0	0	0.0	2	0.2
Neoadjuvant Chemotherapy		0	0.0	1	0.1	1	0.1	2	0.2	1	0.1	0	0.0	0	0.0	0	0.0	5	0.6
Unknown		0	0.0	0	0.0	0	0.0	0	0.0	0	0.0	0	0.0	0	0.0	0	0.0	0	0.0
Total		31	3.7	99	11.8	159	19.0	142	17.0	156	18.7	140	16.8	80	9.6	29	3.5	836	

Table 2. 5-Year Results, Treatment Started in 2006

5-year result	No. of patients	%
Alive with no Evidence of the Disease	325	88.6
Alive with Carcinoma	16	4.4
Alive with or without Carcinoma Unknown	3	0.8
Died of Carcinoma	5	1.4
Died of Other Malignant Tumor	1	0.3
Died of Intercurrent Disease	2	0.5
Cause of Death Unknown	2	0.5
Lost to follow-up	13	3.5
Total	367	

Table 3. Stage, Treatment Started in 2006

FIGO Stage		Patients treated	
		No.	
I	A	241	341
	B	9	
	C(b)	53	
	C(1)	6	
	C(2)	5	
	C(a)	27	
II	A	0	9
	B	0	
	C(b)	2	
	C(1)	0	
	C(2)	3	
	C(a)	4	
III	A	2	13
	B	4	
	C	7	
IV		1	
Neoadjuvant Chemotherapy		3	
Unknown		0	
Total		367	

**Table 4. Stage, Treatment Started in 2006
Surface Epithelial-Stromal Tumors**

FIGO Stage		Patients treated	
		No.	
I	A	204	288
	B	9	
	C(b)	46	
	C(1)	4	
	C(2)	4	
	C(a)	21	
II	A	0	4
	B	0	
	C(b)	2	
	C(1)	0	
	C(2)	1	
	C(a)	1	
III	A	2	11
	B	4	
	C	5	
IV		0	
Neoadjuvant Chemotherapy		3	
Unknown		0	
Total		306	

Table 5. Histology, Treatment Started in 2006

Stage and Histological Type	FIGO Stage	Patients treated
		No.
Sex Cord/Stromal Tumors	I	30
	II	3
	III	2
	IV	1
Germ Cell Tumors	I	22
	II	1
	III	0
	IV	0

Table 6. Stage and Histological Type, Treatment Started in 2006

FIGO Stage	Histology	Patients treated	
		No.	%
I	Serous	79	27.4
	Mucinous	182	63.2
	Endometrioid	14	4.9
	Clear	0	0.0
	Other	0	0.0
II	Serous	2	50.0
	Mucinous	0	0.0
	Endometrioid	0	0.0
	Clear	0	0.0
	Other	2	50.0
III	Serous	6	54.6
	Mucinous	4	36.4
	Endometrioid	0	0.0
	Clear	0	0.0
	Other	1	9.1
IV	Serous	0	0.0
	Mucinous	0	0.0
	Endometrioid	0	0.0
	Clear	0	0.0
	Other	0	0.0
Neoadjuvant Chemotherapy	Serous	1	33.3
	Mucinous	1	33.3
	Endometrioid	0	0.0
	Clear	1	33.3
	Other	0	0.0
Unknown	Serous	0	0.0
	Mucinous	0	0.0
	Endometrioid	0	0.0
	Clear	0	0.0
	Other	0	0.0