

報 告

婦人科腫瘍委員会

第55回治療年報

2007年に治療した子宮頸癌，子宮体癌，卵巣悪性・境界悪性腫瘍の5年治療成績について

婦人科腫瘍委員会の第55回治療年報(2007年治療開始例)の報告をいたします。

予後の解析は例年通り，Kaplan-Meier法を用いております。追跡不能症例(Lost to follow-up)が多いと治療成績の信頼性が低下するため，予後追跡報告で追跡不能症例が20%を超える施設のデータは治療成績の解析には用いないこととしています。予後解析に使用された施設は，施設名に左に○がつけてあります。

加盟機関の先生方のご苦勞に感謝申し上げます，また婦人科腫瘍委員会の全委員に御礼申し上げます。今後とも何卒よろしくお願ひ申し上げます。

婦人科腫瘍委員会
委員長 青木 大輔

子宮頸癌治療成績

Table A 5年後の治療転帰

Table 1-8 項目別成績

Figure 1-10 予後5年全生存率

子宮体癌治療成績

Table A 5年後の治療転帰

Table 1-8 項目別成績

Figure 1-10 予後5年全生存率

卵巣悪性腫瘍治療成績

Table A 5年後の治療転帰

Table 1-8 項目別成績

Figure 1-12 予後5年全生存率

卵巣境界悪性腫瘍治療成績

Table A 5年後の治療転帰

Table 1-7 項目別成績

Figure 1 予後5年全生存率

また，下記の項目については，今回より記載方法を一部変更しております。ご注意ください。

- 1)各癌の組織型の内訳を表にまとめ，記載しました。(子宮頸癌 Table 3, 子宮体癌 Table 3, 卵巣悪性腫瘍 Table 2, 卵巣境界悪性腫瘍 Table 2)

- 2)子宮体癌の分化度については、類内膜腺癌のみ分類することとしました。
(子宮体癌 Table 3, 6, 7)
- 3)子宮体癌は分化度別の生存曲線を記載しておりましたが、今回より組織型別の生存曲線を記載することとしました。(子宮体癌 Figure 2, 4, 6, 8, 10)
- 4)卵巣悪性腫瘍についても、進行期別の組織型別生存曲線を記載しました。
(卵巣悪性腫瘍 Figure 4, 6, 8)
- 5)卵巣境界悪性腫瘍についても、生存曲線を記載しました。
(卵巣境界悪性腫瘍 Figure 1)

本報告に関するお問い合わせは婦人科腫瘍委員会にお願いいたします。

子宮頸癌治療成績

Statement for the Year 2007, Inclusive, Cervix

Table A. 5-Year Results, Stage I-IV

	A	B	C	D	E	F	G	H	I	J	K
	Institution	Total No. Treated	no description	Alive with no Evidence of the Disease	Alive with Carcinoma	Alive with or without Carcinoma Unknown	Died of Carcinoma	Died of Other Malignant Tumor	Died of Intercurrent Disease	Cause of Death Unknown	Lost to follow-up
	010022 JR SAPPORO HOSP.	8	8	0	0	0	0	0	0	0	0
○	010025 SAPPORO MED. UNIV.	73	3	61	2	0	0	0	0	0	7
○	010027 HOKKAIDO UNIV.	20	1	15	0	0	4	0	0	0	0
○	010028 KKR SAPPORO MED. CENTER	5	0	2	0	0	3	0	0	0	0
○	010040 ASAHIKAWA MED. COLL.	13	0	9	1	0	2	0	0	1	0
	020004 AOMORI PREF. CENTRAL HOSP.	9	9	0	0	0	0	0	0	0	0
○	020012 HIROSAKI UNIV.	18	0	13	1	0	3	0	1	0	0
○	020017 MISAWA CITY HOSP.	2	0	1	0	0	1	0	0	0	0
○	040004 TOHOKU UNIV.	47	0	27	1	0	14	0	0	0	5
	040013 SENDAI MED. CENTER	17	0	10	0	0	2	0	0	0	5
○	050001 AKITA RED CROSS HOSP.	5	0	3	0	0	2	0	0	0	0
○	050003 AKITA UNIV.	20	0	16	0	0	3	0	0	0	1
○	060002 YAMAGATA PREF. CENTRAL HOSP.	7	0	4	0	0	1	0	1	0	1
○	060005 YAMAGATA UNIV.	19	0	14	0	0	5	0	0	0	0
○	070003 FUKUSHIMA MED. COLL.	16	0	13	0	0	1	0	0	0	2
	080001 TSUCHIURA KYODO GENERAL HOSP	16	16	0	0	0	0	0	0	0	0
	080006 TSUKUBA GAKUEN HOSP.	2	2	0	0	0	0	0	0	0	0
○	080007 TSUKUBA UNIV.	79	0	54	3	0	11	0	1	3	7
	080021 HITACHI GENERAL HOSP.	18	18	0	0	0	0	0	0	0	0
○	080031 TSUKUBA MED. CENTER	5	0	4	0	0	1	0	0	0	0
	090001 TOCHIGI MED. CENTER	4	0	2	0	0	0	0	0	0	2
○	090005 SAISEIKAI UTSUNOMIYA HOSP.	14	0	11	0	0	3	0	0	0	0
○	090011 ASHIKAGA RED CROSS HOSP.	17	0	6	0	0	8	0	0	0	3
○	090015 JICHI MED. UNIV.	49	0	28	2	0	11	0	0	0	8
○	090016 TOCHIGI CANCER CENTER	24	0	18	1	0	4	0	0	0	1
○	100012 GUNMA UNIV.	46	0	34	0	0	4	0	0	0	8
○	110008 SAITAMA MED. CENTER	11	0	7	1	0	3	0	0	0	0
	110014 KOSHIGAYA MUNI. HOSP.	32	20	7	1	0	2	0	0	1	1
○	110023 SAITAMA NATIONAL HOSP.	21	0	16	0	0	4	0	0	0	1
	110027 NATIONAL DEFENSE MED. COLL.	21	21	0	0	0	0	0	0	0	0
○	110030 SAITAMA CANCER CENTER	82	0	61	0	0	19	0	2	0	0
○	120005 CHIBA UNIV.	42	0	28	3	0	10	1	0	0	0
	120009 NIPPON MED. SCH. CHIBA HOKUSOU HOSP.	12	12	0	0	0	0	0	0	0	0
○	120012 MATSUDO CITY HOSP.	5	0	3	0	0	1	0	0	0	1
○	120015 TOKYO DENTAL COLL. ICHIKAWA GENERAL HOSP.	16	0	10	0	0	4	0	0	0	2
	120021 JIKEI UNIV. KASHIWA HOSP.	51	51	0	0	0	0	0	0	0	0
○	120023 JUNTENDO UNIV. URAYASU HOSP.	29	0	19	0	0	9	0	0	1	0
○	120029 ASAHI CENTRAL HOSP.	24	0	16	0	0	4	1	1	0	2
○	120035 KAMEDA MED. CENTER	23	0	15	1	0	2	0	0	1	4
○	120042 CHIBA CANCER CENTER	45	0	32	2	0	10	1	0	0	0
○	120043 NATIONAL INS. OF RADIOLOGICAL SCIENCES	28	0	14	0	0	8	0	0	1	5
	130005 MITSUI MEMORIAL HOSP.	9	0	5	1	0	1	0	0	0	2
○	130009 NATIONAL CANCER CENTER	74	0	42	3	0	15	1	0	4	9
	130013 JIKEI UNIV.	32	3	16	0	0	8	0	0	0	5
○	130023 JUNTENDO UNIV.	30	0	15	1	0	13	1	0	0	0
	130024 TOKYO MED. DENT. UNIV.	9	9	0	0	0	0	0	0	0	0
	130025 NIPPON MED. SCH.	23	23	0	0	0	0	0	0	0	0
○	130026 TOKYO UNIV.	37	0	26	0	0	6	1	1	0	3
○	130029 TOKYO WOMENS MED. UNIV. MED. CENTER EAST	5	0	3	0	0	1	0	1	0	0
	130034 JIKEI UNIV. KATSUSHIKA MED. CENTER	14	14	0	0	0	0	0	0	0	0
	130038 TOKYO METRO. BOKUTOH HOSP.	5	5	0	0	0	0	0	0	0	0
○	130044 NTT MED. CENTER TOKYO	12	0	9	0	0	2	0	0	0	1
	130046 SHOWA UNIV.	25	0	12	1	0	4	1	0	1	6
○	130050 TOHO UNIV. OMORI MED. CENTER	15	0	13	0	0	1	0	1	0	0

	A	B	C	D	E	F	G	H	I	J	K
	Institution	Total No. Treated	no description	Alive with no Evidence of the Disease	Alive with Carcinoma	Alive with or without Carcinoma Unknown	Died of Carcinoma	Died of Other Malignant Tumor	Died of Intercurrent Disease	Cause of Death Unknown	Lost to follow-up
○	130055	RED CROSS MED. CENTER	5	0	3	0	1	0	0	0	1
○	130061	TOKYO MED. CENTER	19	0	10	0	8	0	0	0	1
	130063	KOSEI CENTRAL HOSP.	1	1	0	0	0	0	0	0	0
	130064	TOHO UNIV. OHASHI MED. CENTER	7	7	0	0	0	0	0	0	0
	130074	TOKYO MED. UNIV.	38	38	0	0	0	0	0	0	0
○	130077	KEIO UNIV.	90	3	72	2	9	0	0	0	4
	130080	NATIONAL CENTER FOR GLOBAL HEALTH AND MED.	3	3	0	0	0	0	0	0	0
	130085	KOSEI HOSP.	10	10	0	0	0	0	0	0	0
○	130092	TEIKYO UNIV.	15	0	7	0	5	0	0	0	3
○	130095	NIHON UNIV.	28	0	18	0	6	1	0	0	3
	130099	MUSASHINO RED CROSS HOSP.	35	25	0	0	7	0	0	0	3
	130100	KYORIN UNIV.	27	0	8	1	7	0	0	0	11
○	130112	MACHIDA MUNI. HOSP.	2	0	2	0	0	0	0	0	0
	130119	NIPPON MED. SCH. TAMA NAGAYAMA HOSP.	12	9	0	0	2	0	0	0	1
○	130122	TOKYO METRO. KOMAGOME HOSP.	37	0	21	1	8	0	0	0	7
○	130124	KYOUNDO HOSP.	10	1	7	0	1	0	0	0	1
○	130125	CANCER INST. HOSP.	115	0	95	6	14	0	0	0	0
	130135	TAMA-NAMBU CHIHIKI HOSP.	10	10	0	0	0	0	0	0	0
	130137	TOKAI UNIV. HACHIOJI HOSP.	6	6	0	0	0	0	0	0	0
	130144	JUNTENDO UNIV. NERIMA HOSP.	1	1	0	0	0	0	0	0	0
	140001	KAWASAKI MUNI. HOSP.	6	0	0	0	0	0	0	0	6
○	140006	NIPPON MED. SCH. MUSASHI KOSUGI HOSP.	14	0	7	0	5	0	0	0	2
○	140008	KANTO ROSAI HOSP.	3	0	2	0	1	0	0	0	0
○	140012	ST. MARIANNA UNIV.	39	1	23	2	7	0	0	0	6
	140016	YOKOHAMA ROSAI HOSP.	4	0	0	0	2	0	0	0	2
	140017	SHOWA UNIV. FUJIGAOKA HOSP.	16	0	8	0	3	0	0	0	5
○	140020	KITASATO UNIV.	54	0	25	0	18	1	0	0	10
○	140029	YOKOHAMA CITY UNIV.	44	0	26	1	14	1	0	0	2
	140030	YOKOHAMA MINAMI KYOSAI HOSP.	8	0	4	0	2	0	0	0	2
○	140035	YOKOHAMA MUNI. CITIZENS HOSP.	15	0	13	0	1	0	0	0	1
	140037	ST. MARIANNA UNIV. YOKOHAMA CITY SEIBU HOSP.	1	1	0	0	0	0	0	0	0
○	140044	SHONAN KAMAKURA GENERAL HOSP.	1	0	1	0	0	0	0	0	0
	140054	ISEHARA KYODO HOSP.	1	1	0	0	0	0	0	0	0
○	140055	TOKAI UNIV.	44	0	17	2	16	0	0	2	7
○	140059	KANAGAWA CANCER CENTER	83	0	56	2	17	1	2	3	2
	140061	YOKOHAMA CITY UNIV. MED. CENTER	10	0	5	0	2	0	0	0	3
	150006	UNIV. OF YAMANASHI	20	0	8	0	3	1	3	0	5
	160001	NAGANO RED CROSS HOSP.	31	0	11	0	9	0	0	0	11
	160006	SHINSHU UNIV.	19	19	0	0	0	0	0	0	0
○	160022	NAGANO MUNI. HOSP.	19	0	17	0	1	0	0	1	0
○	170006	FUJI CITY GENERAL HOSP.	7	0	5	0	1	0	0	0	1
○	170009	SHIZUOKA GENERAL HOSP.	35	0	24	0	8	0	0	0	3
	180001	NAGAOKA RED CROSS HOSP.	20	6	11	0	2	0	0	0	1
○	180010	NIIGATA CANCER CENTER HOSP.	45	0	30	0	15	0	0	0	0
	190001	TOYAMA UNIV.	17	0	7	2	2	1	0	0	5
○	190002	TOYAMA RED CROSS HOSP.	7	0	5	0	2	0	0	0	0
	190009	TAKAOKA CITY HOSP.	1	1	0	0	0	0	0	0	0
○	200001	KANAZAWA MED. UNIV.	11	0	7	0	4	0	0	0	0
	200002	KANAZAWA MED. CENTER	12	9	0	0	3	0	0	0	0
○	200004	KANAZAWA UNIV.	25	0	16	0	6	0	0	0	3
	210002	FUKUI PREF. HOSP.	22	22	0	0	0	0	0	0	0
	210003	FUKUI UNIV.	21	0	7	0	6	0	0	0	8
	210004	FUKUI RED CROSS HOSP.	4	2	0	0	0	0	0	2	0
○	220002	GIFU UNIV.	28	0	19	1	8	0	0	0	0
	220006	OGAKI MUNI. HOSP.	22	22	0	0	0	0	0	0	0
	230001	TOYOHASHI MUNI. HOSP.	29	29	0	0	0	0	0	0	0
○	230014	RED CROSS NAGOYA DAIICHI HOSP.	40	0	32	1	6	0	1	0	0
	230031	NAGOYA UNIV.	33	33	0	0	0	0	0	0	0
○	230034	NAGOYA CITY UNIV.	20	0	13	0	7	0	0	0	0

	A	B	C	D	E	F	G	H	I	J	K
	Institution	Total No. Treated	no description	Alive with no Evidence of the Disease	Alive with Carcinoma	Alive with or without Carcinoma Unknown	Died of Carcinoma	Died of Other Malignant Tumor	Died of Intercurrent Disease	Cause of Death Unknown	Lost to follow-up
○	230035 FUJITA HEALTH UNIV.	27	0	21	3	0	3	0	0	0	0
	230040 AICHI MED. UNIV.	15	0	7	0	0	2	0	0	0	6
○	230052 AICHI CANCER CENTER	75	0	57	6	0	12	0	0	0	0
○	240002 MIE PREF. GENERAL MED. CENTER	24	0	16	1	0	5	0	0	0	2
○	240003 YOKKAICHI MUNI. HOSP.	6	0	2	0	0	3	0	0	0	1
	240009 MIE UNIV.	38	0	19	0	0	6	0	1	0	12
○	240015 ISE RED CROSS HOSP.	13	0	7	1	0	4	0	0	0	1
○	250001 OHTSU RED CROSS HOSP.	10	0	4	0	0	4	0	0	0	2
○	250003 SHIGA UNIV. OF MED. SCIENCE	21	0	12	1	0	4	0	0	0	4
	250006 OMIHACHIMAN COMMUNITY MED. CENTER	1	1	0	0	0	0	0	0	0	0
○	250008 SHIGA MED. CENTER FOR ADULTS	11	1	7	0	0	2	0	0	0	1
○	260002 KYOTO 2ND RED CROSS HOSP.	22	0	19	0	0	3	0	0	0	0
○	260003 KYOTO PREF. UNIV. OF MED.	12	0	7	2	0	1	0	0	0	2
	260007 KYOTO 1ST RED CROSS HOSP.	31	0	13	3	0	7	0	0	0	8
○	260009 KYOTO UNIV.	33	0	15	1	0	11	0	1	0	5
	260013 KYOTO KATSURA HOSP.	1	0	0	0	0	0	0	0	0	1
	260017 SAISEIKAI KYOTO HOSP.	2	2	0	0	0	0	0	0	0	0
○	270003 KITANO HOSP.	31	1	19	1	0	4	0	1	0	5
	270007 OSAKA CITY GENERAL HOSP.	52	52	0	0	0	0	0	0	0	0
○	270009 OSAKA NATIONAL HOSP.	29	0	20	0	0	4	0	0	0	5
	270013 OSAKA POLICE HOSP.	9	0	3	0	0	3	0	0	0	3
	270018 NISSAY HOSP.	5	5	0	0	0	0	0	0	0	0
	270032 SAISEIKAI SUITA HOSP.	11	11	0	0	0	0	0	0	0	0
○	270035 OSAKA UNIV.	74	0	45	3	0	13	0	0	0	13
○	270041 OSAKA MED. COLL.	32	0	21	0	0	6	0	0	0	5
	270042 KANSAI MED. UNIV.	21	0	13	1	0	2	0	0	0	5
○	270056 KINKI UNIV.	23	2	17	0	0	2	0	1	0	1
	270060 SAKAI CITY HOSP.	7	7	0	0	0	0	0	0	0	0
	270062 OSAKA ROSAI HOSP.	44	0	27	0	0	5	0	0	0	12
○	270101 <small>OSAKA MED. CENTER FOR CANCER AND CARDIOVASCULAR DISEASES</small>	51	0	32	3	0	10	0	1	0	5
○	280002 KOBE CITY MED. CENTER GENERAL HOSP.	20	0	13	0	0	4	0	0	0	3
	280010 KOBE MED. CENTER	8	2	3	0	0	1	0	0	0	2
	280012 HYOGO PREF. AWAJI MED. CENTER	8	8	0	0	0	0	0	0	0	0
○	280015 KANSAI ROSAI HOSP.	29	1	16	2	0	8	0	0	0	2
	280021 HYOGO MED. COLL.	39	39	0	0	0	0	0	0	0	0
	280028 TOYOOKA PUBLIC HOSP.	9	0	5	1	0	1	0	0	0	2
	280030 HIMEJI RED CROSS HOSP.	18	0	11	0	0	3	0	0	0	4
	280031 HIMEJI MED. CENTER	5	5	0	0	0	0	0	0	0	0
○	280033 HYOGO CANCER CENTER	107	0	71	6	0	21	1	4	1	3
	290003 NARA PREF. NARA HOSP.	19	0	13	0	0	1	0	0	0	5
○	290004 TENRI HOSP.	35	0	23	2	0	7	0	1	0	2
○	290007 NARA MED. UNIV.	31	0	20	1	0	7	0	0	0	3
	290009 NARA PREF. WESTERN MED. CENTER	1	1	0	0	0	0	0	0	0	0
○	290019 YAMATO TAKADA MUNI. HOSP.	6	0	5	0	0	0	0	0	0	1
	300002 JAPANESE RED CROSS WAKAYAMA MED. CENTER	18	2	8	1	0	3	0	1	0	3
	300003 WAKAYAMA MED. UNIV.	23	16	0	0	0	3	0	0	0	4
○	310001 TOTTORI PREF. CENTRAL HOSP.	7	0	5	0	0	1	1	0	0	0
○	310007 TOTTORI UNIV.	19	0	11	2	0	4	0	0	0	2
	320003 SHIMANE UNIV.	13	2	1	0	0	4	0	0	0	6
	320004 SHIMANE PREF. CENTRAL HOSP.	5	4	0	0	0	1	0	0	0	0
	330002 JAPANESE RED CROSS OKAYAMA HOSP.	12	8	2	1	0	0	0	0	0	1
	330003 KAWASAKI HOSP.	1	1	0	0	0	0	0	0	0	0
	330004 OKAYAMA SAISEIKAI GENERAL HOSP.	20	0	15	0	0	0	0	0	0	5
○	330006 OKAYAMA UNIV.	61	0	39	0	0	6	0	1	3	12
○	330007 OKAYAMA MED. CENTER	1	0	1	0	0	0	0	0	0	0
○	330008 KURASHIKI CENTRAL HOSP.	17	0	9	1	0	4	0	0	1	2
	330009 KAWASAKI MED. SCH.	3	3	0	0	0	0	0	0	0	0
○	330010 KURASHIKI MED. CENTER	35	0	32	0	0	1	0	0	0	2
○	340001 FUKUYAMA MED. CENTER	36	0	13	3	0	16	0	1	0	3

	A	B	C	D	E	F	G	H	I	J	K
	Institution	Total No. Treated	no description	Alive with no Evidence of the Disease	Alive with Carcinoma	Alive with or without Carcinoma Unknown	Died of Carcinoma	Died of Other Malignant Tumor	Died of Intercurrent Disease	Cause of Death Unknown	Lost to follow-up
	340007 HIROSHIMA CITY HOSP.	31	0	19	1	0	4	0	0	0	7
	340010 HIROSHIMA CITY ASA HOSP.	19	0	10	1	0	2	0	0	1	5
○	340012 HIROSHIMA UNIV.	27	0	19	3	0	3	0	0	0	2
○	340014 HIROSHIMA PREF. HOSP.	46	0	41	1	0	3	0	0	1	0
○	340015 KURE MED. CENTER	25	0	17	0	0	5	0	0	0	3
○	340018 HIROSHIMA GENERAL HOSP.	9	0	3	0	0	4	0	1	0	1
	340031 HIGASHIHIROSHIMA MED. CENTER	3	3	0	0	0	0	0	0	0	0
	350003 TOKUYAMA CENTRAL HOSP.	23	23	0	0	0	0	0	0	0	0
○	350008 YAMAGUCHI RED CROSS HOSP.	11	0	10	0	0	1	0	0	0	0
○	350009 YAMAGUCHI UNIV.	26	0	14	0	0	8	0	0	3	1
	360003 TOKUSHIMA UNIV.	32	0	20	1	0	4	0	0	0	7
○	360005 TOKUSHIMA PREF. CENTRAL HOSP.	1	0	1	0	0	0	0	0	0	0
○	370001 TAKAMATSU RED CROSS HOSP.	11	0	10	0	0	0	0	0	0	1
○	370002 TAKAMATSU MUNI. HOSP.	6	0	4	0	0	2	0	0	0	0
	370003 KAGAWA PREF. CENTRAL HOSP.	7	1	3	1	0	1	0	0	0	1
○	380001 SHIKOKU CANCER CENTER	65	1	43	1	0	16	0	3	0	1
○	380006 EHIME UNIV.	20	0	13	0	0	4	0	0	0	3
○	390003 KOCHI HEALTH SCIENCES CENTER	13	0	9	1	0	1	0	0	0	2
	390006 KOCHI UNIV.	15	0	6	0	0	4	0	0	0	5
	400003 KOKURA MED. CENTER	22	22	0	0	0	0	0	0	0	0
	400008 UNIV. OF OCCUPATIONAL AND ENVIRONMENTAL HEALTH	24	0	14	1	0	3	0	1	0	5
○	400010 KYUSHU MED. CENTER	17	0	12	1	0	3	0	0	0	1
	400012 KYUSHU UNIV.	68	68	0	0	0	0	0	0	0	0
○	400013 FUKUOKA UNIV.	23	0	13	0	0	10	0	0	0	0
○	400014 FUKUOKA RED CROSS HOSP.	13	0	6	0	0	5	0	1	0	1
○	400020 KURUME UNIV.	59	0	37	1	0	20	0	0	0	1
	400026 SAISEIKAI FUKUOKA GENERAL HOSP.	20	0	9	0	0	4	0	0	0	7
○	400040 KYUSHU CANCER CENTER	56	0	46	1	0	7	0	1	0	1
○	410005 SAGA UNIV.	27	0	18	0	0	4	1	0	0	4
	420001 NAGASAKI HARBOR MED. CENTER CITY HOSP.	17	3	10	0	0	2	1	1	0	0
○	420002 NAGASAKI UNIV.	32	0	15	1	0	10	0	0	0	6
	420003 RED CROSS NAGASAKI ATOMIC BOMB HOSP.	7	6	0	0	0	1	0	0	0	0
	420006 SASEBO KYOSAI HOSP.	31	0	21	0	0	1	0	0	0	9
○	430001 KUMAMOTO MED. CENTER	36	0	19	0	0	12	2	2	0	1
	430002 KUMAMOTO UNIV.	81	0	56	0	0	8	0	0	0	17
○	430003 KUMAMOTO CITY HOSP.	13	0	5	0	0	7	0	0	0	1
	440002 OITA PREF. HOSP.	51	0	27	0	0	12	0	0	0	12
	440005 OITA UNIV.	16	0	4	1	0	2	0	1	1	7
	450001 MIYAZAKI PREF. HOSP.	46	0	21	3	0	10	1	0	0	11
○	450005 MIYAZAKI UNIV.	18	0	11	1	0	6	0	0	0	0
	460001 KAGOSHIMA UNIV.	32	19	0	0	0	3	0	0	0	10
	460004 KAGOSHIMA CITY HOSP.	47	1	22	1	0	12	0	2	0	9
○	470008 RYUKYU UNIV.	84	0	54	2	0	24	0	4	0	0
○	470010 OKINAWA PREF. CHUBU HOSP.	13	0	6	1	0	4	0	2	0	0
	Total	5,167	796	2,743	116	0	893	20	47	32	520

Table 1. No. of Patients by Stage and Age

Age		~19		20~29		30~39		40~49		50~59		60~69		70~79		80~		Total	
		No.	%	No.	%	No.	%	No.	%	No.	%	No.	%	No.	%	No.	%	No.	%
I	A1	0	0.0	31	0.9	168	5.0	110	3.3	33	1.0	19	0.6	12	0.4	4	0.1	377	11.2
	A2	0	0.0	2	0.1	19	0.6	17	0.5	3	0.1	5	0.1	5	0.1	0	0.0	51	1.5
	A not cl.	0	0.0	7	0.2	24	0.7	14	0.4	7	0.2	7	0.2	4	0.1	2	0.1	65	1.9
	B1	0	0.0	54	1.6	271	8.0	278	8.2	170	5.0	122	3.6	70	2.1	7	0.2	972	28.7
	B2	1	0.0	8	0.2	71	2.1	94	2.8	60	1.8	29	0.9	18	0.5	6	0.2	287	8.5
	B not cl.	0	0.0	1	0.0	6	0.2	7	0.2	3	0.1	7	0.2	6	0.2	1	0.0	31	0.9
	not cl.	0	0.0	1	0.0	2	0.1	2	0.1	1	0.0	4	0.1	1	0.0	1	0.0	12	0.4
total	1	0.0	104	3.1	561	16.6	522	15.4	277	8.2	193	5.7	116	3.4	21	0.6	1,795	53.1	
II	A	0	0.0	4	0.1	41	1.2	39	1.2	68	2.0	45	1.3	31	0.9	10	0.3	238	7.0
	B	0	0.0	9	0.3	58	1.7	140	4.1	159	4.7	118	3.5	73	2.2	31	0.9	588	17.4
	not cl.	0	0.0	0	0.0	0	0.0	0	0.0	0	0.0	0	0.0	0	0.0	0	0.0	0	0.0
total	0	0.0	13	0.4	99	2.9	179	5.3	227	6.7	163	4.8	104	3.1	41	1.2	826	24.4	
III	A	0	0.0	0	0.0	1	0.0	2	0.1	9	0.3	10	0.3	6	0.2	5	0.1	33	1.0
	B	0	0.0	1	0.0	23	0.7	69	2.0	111	3.3	106	3.1	96	2.8	41	1.2	447	13.2
	not cl.	0	0.0	0	0.0	0	0.0	0	0.0	0	0.0	0	0.0	0	0.0	1	0.0	1	0.0
total	0	0.0	1	0.0	24	0.7	71	2.1	120	3.5	116	3.4	102	3.0	47	1.4	481	14.2	
IV	A	0	0.0	0	0.0	9	0.3	7	0.2	18	0.5	17	0.5	24	0.7	15	0.4	90	2.7
	B	0	0.0	2	0.1	13	0.4	44	1.3	37	1.1	44	1.3	35	1.0	12	0.4	187	5.5
	not cl.	0	0.0	0	0.0	0	0.0	1	0.0	0	0.0	0	0.0	0	0.0	1	0.0	2	0.1
total	0	0.0	2	0.1	22	0.7	52	1.5	55	1.6	61	1.8	59	1.7	28	0.8	279	8.3	
Total		1	0.0	120	3.5	706	20.9	824	24.4	679	20.1	533	15.8	381	11.3	137	4.1	3,381	

Table 2. No. of Patients by Treatment method

Treatment		Surgery								Radiation				Chem.Immun. Hormon		Other		Total	
		(alone)		Radiation		Radiation Chem.Immun. Hormon		Chem.Immun. Hormon		(alone)		Chem.Immun. Hormon		Chem.Immun. Hormon		Other		Total	
		No.	%	No.	%	No.	%	No.	%	No.	%	No.	%	No.	%	No.	%	No.	%
I	A1	368	10.9	4	0.1	0	0.0	0	0.0	0	0.0	1	0.0	0	0.0	4	0.1	377	11.2
	A2	47	1.4	3	0.1	0	0.0	0	0.0	1	0.0	0	0.0	0	0.0	0	0.0	51	1.5
	A not cl.	61	1.8	0	0.0	0	0.0	0	0.0	4	0.1	0	0.0	0	0.0	0	0.0	65	1.9
	B1	542	16.0	112	3.3	74	2.2	150	4.4	73	2.2	17	0.5	1	0.0	3	0.1	972	28.7
	B2	41	1.2	50	1.5	59	1.7	91	2.7	22	0.7	21	0.6	0	0.0	3	0.1	287	8.5
	B not cl.	9	0.3	4	0.1	4	0.1	8	0.2	5	0.1	1	0.0	0	0.0	0	0.0	31	0.9
	not cl.	10	0.3	1	0.0	0	0.0	0	0.0	1	0.0	0	0.0	0	0.0	0	0.0	12	0.4
total	1,078	31.9	174	5.1	137	4.1	249	7.4	106	3.1	40	1.2	1	0.0	10	0.3	1,795	53.1	
II	A	47	1.4	34	1.0	38	1.1	45	1.3	37	1.1	33	1.0	0	0.0	4	0.1	238	7.0
	B	27	0.8	52	1.5	112	3.3	124	3.7	108	3.2	160	4.7	0	0.0	5	0.1	588	17.4
	not cl.	0	0.0	0	0.0	0	0.0	0	0.0	0	0.0	0	0.0	0	0.0	0	0.0	0	0.0
total	74	2.2	86	2.5	150	4.4	169	5.0	145	4.3	193	5.7	0	0.0	9	0.3	826	24.4	
III	A	0	0.0	1	0.0	1	0.0	3	0.1	12	0.4	15	0.4	0	0.0	1	0.0	33	1.0
	B	0	0.0	5	0.1	13	0.4	5	0.1	158	4.7	248	7.3	9	0.3	9	0.3	447	13.2
	not cl.	0	0.0	0	0.0	0	0.0	0	0.0	1	0.0	0	0.0	0	0.0	0	0.0	1	0.0
total	0	0.0	6	0.2	14	0.4	8	0.2	171	5.1	263	7.8	9	0.3	10	0.3	481	14.2	
IV	A	0	0.0	1	0.0	2	0.1	3	0.1	44	1.3	37	1.1	1	0.0	2	0.1	90	2.7
	B	0	0.0	0	0.0	6	0.2	11	0.3	47	1.4	84	2.5	37	1.1	2	0.1	187	5.5
	not cl.	0	0.0	0	0.0	0	0.0	0	0.0	1	0.0	1	0.0	0	0.0	0	0.0	2	0.1
total	0	0.0	1	0.0	8	0.2	14	0.4	92	2.7	122	3.6	38	1.1	4	0.1	279	8.3	
Total		1,152	34.1	267	7.9	309	9.1	440	13.0	514	15.2	618	18.3	48	1.4	33	1.0	3,381	

Table 3. No. of Patients by Histological Type

Histological Type		Squamous Cell Cancer						Adenocarcinoma												Adenosquamous carcinoma					
		unknown		keratinizing		non-keratinizing		unknown		mucinous-endocervical		mucinous-intestinal		endometrioid		clear cell		serous				mesonephric			
		No.	%	No.	%	No.	%	No.	%	No.	%	No.	%	No.	%	No.	%	No.	%			No.	%	No.	%
I	A1	221	6.5	32	0.9	90	2.7	8	0.2	7	0.2	3	0.1	1	0.0	0	0.0	0	0.0	0	0.0	0	0.0	9	0.3
	A2	18	0.5	8	0.2	22	0.7	0	0.0	1	0.0	1	0.0	1	0.0	0	0.0	0	0.0	0	0.0	0	0.0	0	0.0
	A not cl.	25	0.7	1	0.0	4	0.1	19	0.6	14	0.4	0	0.0	0	0.0	0	0.0	0	0.0	0	0.0	0	0.0	2	0.1
	B1	114	3.4	131	3.9	372	11.0	39	1.2	153	4.5	7	0.2	45	1.3	9	0.3	3	0.1	0	0.0	0	0.0	67	2.0
	B2	40	1.2	38	1.1	93	2.8	14	0.4	41	1.2	3	0.1	16	0.5	5	0.1	2	0.1	1	0.0	1	0.0	19	0.6
	B not cl.	9	0.3	4	0.1	3	0.1	6	0.2	5	0.1	0	0.0	0	0.0	0	0.0	0	0.0	0	0.0	0	0.0	1	0.0
	not cl.	7	0.2	0	0.0	1	0.0	0	0.0	2	0.1	0	0.0	0	0.0	0	0.0	0	0.0	0	0.0	0	0.0	0	0.0
total	434	12.8	214	6.3	585	17.3	86	2.5	223	6.6	14	0.4	63	1.9	14	0.4	5	0.1	1	0.0	98	2.9			
II	A	44	1.3	38	1.1	108	3.2	4	0.1	18	0.5	3	0.1	4	0.1	1	0.0	2	0.1	0	0.0	0	0.0	11	0.3
	B	103	3.0	102	3.0	257	7.6	22	0.7	41	1.2	5	0.1	15	0.4	2	0.1	4	0.1	0	0.0	0	0.0	26	0.8
	not cl.	0	0.0	0	0.0	0	0.0	0	0.0	0	0.0	0	0.0	0	0.0	0	0.0	0	0.0	0	0.0	0	0.0	0	0.0
total	147	4.3	140	4.1	365	10.8	26	0.8	59	1.7	8	0.2	19	0.6	3	0.1	6	0.2	0	0.0	37	1.1			
III	A	8	0.2	5	0.1	13	0.4	1	0.0	1	0.0	0	0.0	0	0.0	1	0.0	0	0.0	0	0.0	0	0.0	2	0.1
	B	113	3.3	71	2.1	191	5.6	15	0.4	20	0.6	1	0.0	7	0.2	1	0.0	0	0.0	0	0.0	0	0.0	16	0.5
	not cl.	1	0.0	0	0.0	0	0.0	0	0.0	0	0.0	0	0.0	0	0.0	0	0.0	0	0.0	0	0.0	0	0.0	0	0.0
total	122	3.6	76	2.2	204	6.0	16	0.5	21	0.6	1	0.0	7	0.2	2	0.1	0	0.0	0	0.0	18	0.5			
IV	A	27	0.8	11	0.3	34	1.0	3	0.1	4	0.1	1	0.0	1	0.0	2	0.1	0	0.0	0	0.0	0	0.0	4	0.1
	B	32	0.9	30	0.9	70	2.1	17	0.5	15	0.4	1	0.0	0	0.0	1	0.0	1	0.0	0	0.0	8	0.2		
	not cl.	2	0.1	0	0.0	0	0.0	0	0.0	0	0.0	0	0.0	0	0.0	0	0.0	0	0.0	0	0.0	0	0.0	0	0.0
total	61	1.8	41	1.2	104	3.1	20	0.6	19	0.6	2	0.1	1	0.0	3	0.1	1	0.0	0	0.0	12	0.4			
Total	764	22.6	471	13.9	1,258	37.2	148	4.4	322	9.5	25	0.7	90	2.7	22	0.7	12	0.4	1	0.0	165	4.9			

Histological Type		Others														Total							
		glassy cell		adenoid cystic		adeno basal		carcinoid		small cell		undifferentiated		carcinosarcoma				other		unknown			
		No.	%	No.	%	No.	%	No.	%	No.	%	No.	%	No.	%			No.	%	No.	%		
I	A1	0	0.0	0	0.0	1	0.0	1	0.0	0	0.0	0	0.0	0	0.0	0	0.0	4	0.1	0	0.0	377	11.2
	A2	0	0.0	0	0.0	0	0.0	0	0.0	0	0.0	0	0.0	0	0.0	0	0.0	0	0.0	0	0.0	51	1.5
	A not cl.	0	0.0	0	0.0	0	0.0	0	0.0	0	0.0	0	0.0	0	0.0	0	0.0	0	0.0	65	1.9		
	B1	4	0.1	1	0.0	1	0.0	0	0.0	13	0.4	3	0.1	0	0.0	10	0.3	0	0.0	972	28.7		
	B2	1	0.0	0	0.0	0	0.0	0	0.0	7	0.2	1	0.0	2	0.1	4	0.1	0	0.0	287	8.5		
	B not cl.	0	0.0	0	0.0	0	0.0	0	0.0	1	0.0	0	0.0	1	0.0	1	0.0	0	0.0	31	0.9		
	not cl.	0	0.0	0	0.0	0	0.0	0	0.0	0	0.0	0	0.0	1	0.0	1	0.0	0	0.0	12	0.4		
total	5	0.1	1	0.0	2	0.1	1	0.0	21	0.6	4	0.1	4	0.1	20	0.6	0	0.0	1,795	53.1			
II	A	0	0.0	0	0.0	0	0.0	0	0.0	3	0.1	0	0.0	0	0.0	2	0.1	0	0.0	238	7.0		
	B	1	0.0	0	0.0	0	0.0	0	0.0	3	0.1	3	0.1	1	0.0	3	0.1	0	0.0	588	17.4		
	not cl.	0	0.0	0	0.0	0	0.0	0	0.0	0	0.0	0	0.0	0	0.0	0	0.0	0	0.0	0	0.0		
total	1	0.0	0	0.0	0	0.0	0	0.0	6	0.2	3	0.1	1	0.0	5	0.1	0	0.0	826	24.4			
III	A	0	0.0	0	0.0	0	0.0	0	0.0	1	0.0	0	0.0	1	0.0	0	0.0	0	0.0	33	1.0		
	B	1	0.0	0	0.0	0	0.0	0	0.0	4	0.1	2	0.1	2	0.1	3	0.1	0	0.0	447	13.2		
	not cl.	0	0.0	0	0.0	0	0.0	0	0.0	0	0.0	0	0.0	0	0.0	0	0.0	0	0.0	1	0.0		
total	1	0.0	0	0.0	0	0.0	0	0.0	5	0.1	2	0.1	3	0.1	3	0.1	0	0.0	481	14.2			
IV	A	0	0.0	0	0.0	0	0.0	0	0.0	0	0.0	0	0.0	0	0.0	2	0.1	1	0.0	90	2.7		
	B	0	0.0	0	0.0	0	0.0	0	0.0	7	0.2	4	0.1	1	0.0	0	0.0	0	0.0	187	5.5		
	not cl.	0	0.0	0	0.0	0	0.0	0	0.0	0	0.0	0	0.0	0	0.0	0	0.0	0	0.0	2	0.1		
total	0	0.0	0	0.0	0	0.0	0	0.0	7	0.2	4	0.1	1	0.0	2	0.1	1	0.0	279	8.3			
Total	7	0.2	1	0.0	2	0.1	1	0.0	39	1.2	13	0.4	9	0.3	30	0.9	1	0.0	3,381				

Table 4. 5-Year Results, Treatment Started in 2007

5-year result	No. of patients	%
Alive with no evidence of the disease	2,250	66.5
Alive with carcinoma	93	2.8
Alive with or without carcinoma unknown	0	0.0
Died of carcinoma	713	21.1
Died of other malignant tumor	16	0.5
Died of intercurrent disease	38	1.1
Cause of death unknown	26	0.8
Lost to follow-up	245	7.2
Total	3,381	

Table 5. 5-Year Survival by Stage, Treatment Started in 2007

FIGO Stage		Patients treated		5-year survival		Lost to follow-up
		No.		%		
I	A1	377	1,795	99.2	91.8	122/1,795 (6.8%)
	A2	51		97.8		
	A not cl.	65		94.8		
	B1	972		93.4		
	B2	287		75.7		
	B not cl.	31		89.8		
	not cl.	12	90.9			
II	A	238	826	78.7	71.5	54/826 (6.5%)
	B	588		68.6		
	not cl.	0		—		
III	A	33	481	62.7	53.0	42/481 (8.7%)
	B	447		52.2		
	not cl.	1		100.0		
IV	A	90	279	35.6	23.7	27/279 (9.7%)
	B	187		17.9		
	not cl.	2		50.0		
Total		3,381				

Table 6. 5-Year Survival by Histological Type, Treatment Started in 2007

Histological Type	Patients treated		5-year survival	Lost to follow-up
	No.	%	%	
Squamous cell carcinoma	2,493	73.7	78.5	196/2,493 (7.9%)
Adenocarcinoma	620	18.3	69.9	35/620 (5.6%)
Adenosquamous carcinoma	165	4.9	77.0	5/165 (3.0%)
Others	103	3.0	58.9	9/103 (8.7%)
Total	3,381			

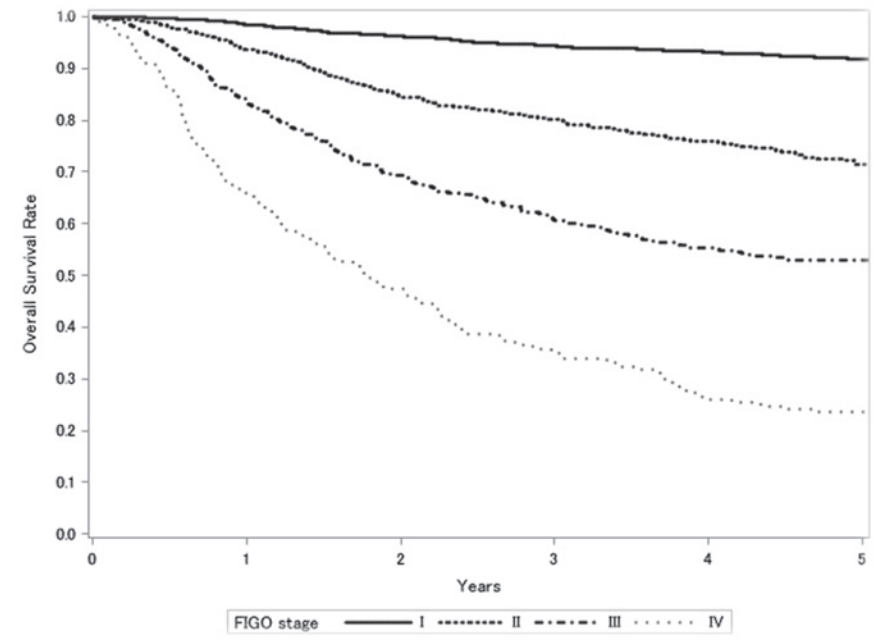
Table 7. 5-Year Survival by Stage and Histological Type, Treatment Started in 2007

FIGO Stage	Histology Type	Patients treated		5-year survival	Lost to follow-up
		No.	%	%	
I	Squamous cell carcinoma	1,233	68.7	94.0	85/1,795 (4.7%)
	Adenocarcinoma	406	22.6	88.0	29/1,795 (1.6%)
	Adenosquamous carcinoma	98	5.5	92.4	4/1,795 (0.2%)
	Others	58	3.2	73.8	4/1,795 (0.2%)
II	Squamous cell carcinoma	652	78.9	76.4	50/826 (6.1%)
	Adenocarcinoma	121	14.6	48.9	4/826 (0.5%)
	Adenosquamous carcinoma	37	4.5	69.0	0/826 (0.0%)
	Others	16	1.9	56.9	0/826 (0.0%)
III	Squamous cell carcinoma	402	83.6	57.6	39/481 (8.1%)
	Adenocarcinoma	47	9.8	25.4	0/481 (0.0%)
	Adenosquamous carcinoma	18	3.7	41.9	1/481 (0.2%)
	Others	14	2.9	29.0	2/481 (0.4%)
IV	Squamous cell carcinoma	206	73.8	26.8	22/279 (7.9%)
	Adenocarcinoma	46	16.5	9.8	2/279 (0.7%)
	Adenosquamous carcinoma	12	4.3	30.0	0/279 (0.0%)
	Others	15	5.4	24.5	3/279 (1.1%)

Table 8. 5-Year Survival by TNM Classification, Treatment Started in 2007

TNM Stage			Patients treated		5-year survival	Lost to follow-up
			No.	%	%	
T1a1	N0	M0	314	9.8	99.0	35/314 (11.1%)
T1a2	N0	M0	50	1.6	97.8	4/50 (8.0%)
T1b1	N0	M0	896	28.0	94.1	52/896 (5.8%)
T1b2	N0	M0	232	7.2	81.2	13/232 (5.6%)
T2a	N0	M0	192	6.0	83.1	12/192 (6.3%)
T2b	N0	M0	397	12.4	74.6	28/397 (7.1%)
T3a	N0	M0	21	0.7	66.2	3/21 (14.3%)
T3b	N0	M0	251	7.8	56.8	21/251 (8.4%)
T4	N0	M0	39	1.2	32.1	5/39 (12.8%)
T1a1	N1	M0	1	0.0	100.0	0/1 (0.0%)
T1a2	N1	M0	0	0.0	—	—
T1b1	N1	M0	62	1.9	82.2	0/62 (0.0%)
T1b2	N1	M0	49	1.5	56.7	3/49 (6.1%)
T2a	N1	M0	38	1.2	58.4	0/38 (0.0%)
T2b	N1	M0	169	5.3	61.5	10/169 (5.9%)
T3a	N1	M0	9	0.3	66.7	2/9 (22.2%)
T3b	N1	M0	159	5.0	51.2	11/159 (6.9%)
T4	N1	M0	40	1.2	42.2	6/40 (15.0%)
Any T	Any N	MA	125	3.9	33.2	12/125 (9.6%)
Any T	Any N	M1	158	4.9	14.9	12/158 (7.6%)
Any T	Any N	MA/M1	283	8.8	23.0	24/283 (8.5%)

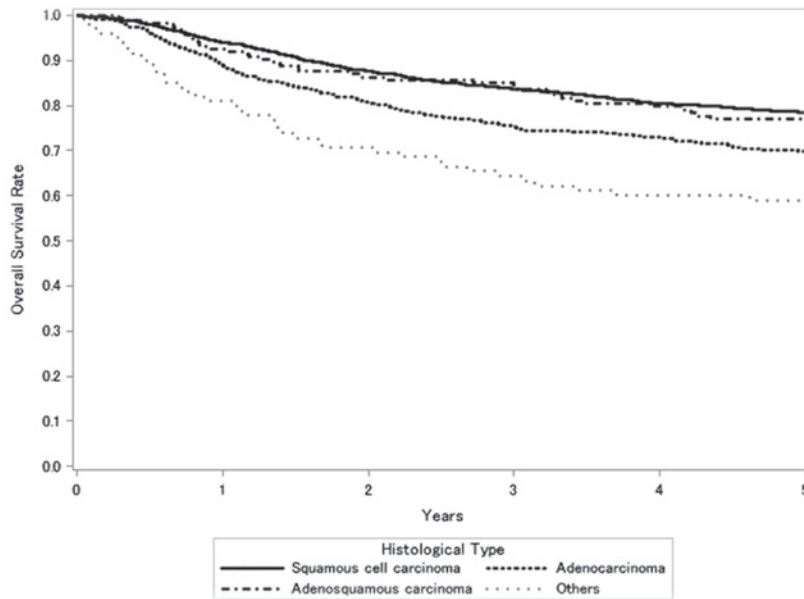
Figure 1.
Kaplan-Meier Estimated Overall Survival Curves of Cervical Cancer Patients by FIGO Stage, Treatment Started in 2007



Test of Equality over Strata			
Test	Chi-Square	DF	Pr > Chi-Square
Log-rank	1050.8931	3	<.0001
Wilcoxon	1050.1435	3	<.0001
-2Log(LR)	813.4065	3	<.0001

Adjustment for Multiple Comparisons for the Log-rank Test				
Strata Comparison		Chi-Square	p-Values	
FIGO Stage	FIGO Stage		Raw	Tukey-Kramer
I	II	214.3000	<.0001	<.0001
I	III	512.9000	<.0001	<.0001
I	IV	823.7000	<.0001	<.0001
II	III	30.3849	<.0001	<.0001
II	IV	73.6310	<.0001	<.0001
III	IV	7.5504	0.0060	0.0306

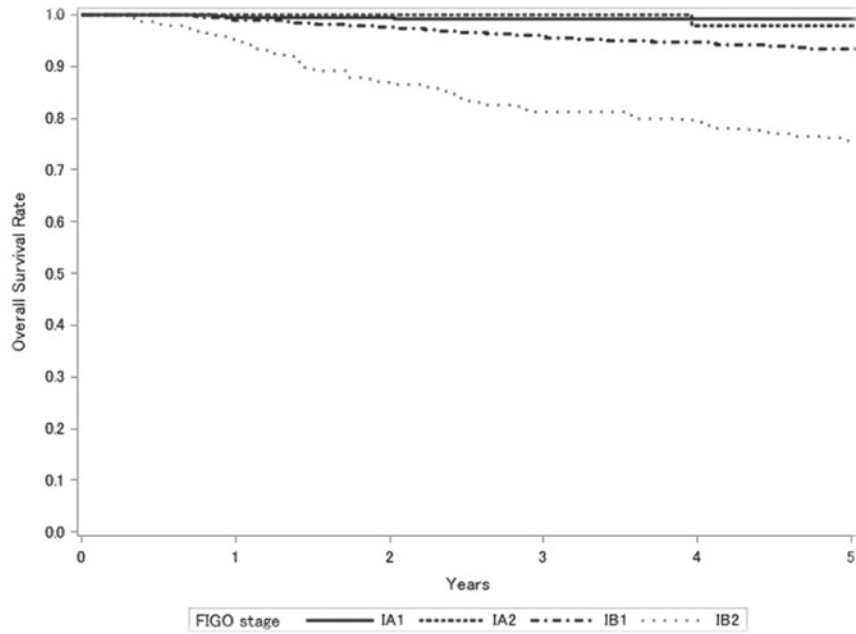
Figure 2.
Kaplan-Meier Estimated Overall Survival Curves of Cervical Cancer Patients by
Histological Type, Treatment Started in 2007



Test of Equality over Strata			
Test	Chi-Square	DF	Pr > Chi-Square
Log-rank	41.6096	3	<.0001
Wilcoxon	48.5725	3	<.0001
-2Log (LR)	31.4128	3	<.0001

Adjustment for Multiple Comparisons for the Log-rank Test				
Strata Comparison		Chi-Square	p-Values	
Histological Type	Histological Type		Raw	Tukey-Kramer
Squamous cell carcinoma	Adenocarcinoma	23.8419	<.0001	<.0001
Squamous cell carcinoma	Adenosquamous carcinoma	15.1003	0.0001	0.0006
Squamous cell carcinoma	Others	34.9066	<.0001	<.0001
Adenocarcinoma	Adenosquamous carcinoma	12.3198	0.0004	0.0025
Adenocarcinoma	Others	3.7285	0.0535	0.2150
Adenosquamous carcinoma	Others	8.4390	0.0037	0.0192

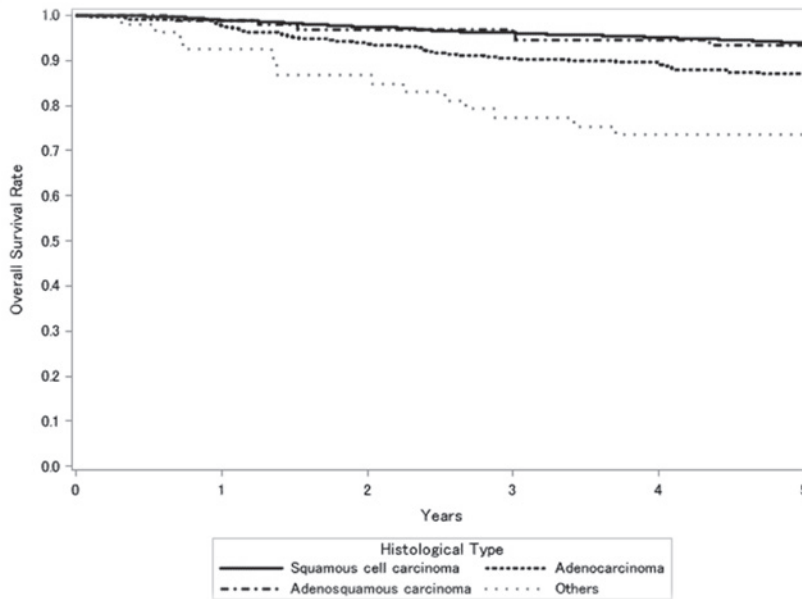
Figure 3.
Kaplan-Meier Estimated Overall Survival Curves of Cervical Cancer Patients by FIGO Stage I Substage, Treatment Started in 2007



Test of Equality over Strata			
Test	Chi-Square	DF	Pr >Chi-Square
Log-rank	124.5682	3	<.0001
Wilcoxon	129.8215	3	<.0001
-2Log(LR)	109.1557	3	<.0001

Adjustment for Multiple Comparisons for the Log-rank Test				
Strata Comparison		Chi-Square	Pr >Chi-Square	
FIGO Stage	FIGO Stage		Raw	Tukey-Kramer
1A1	1A2	20.0795	<.0001	<.0001
1A1	1B1	2.1142	0.1459	0.4656
1A1	1B2	102.7000	<.0001	<.0001
1A2	1B1	2.5536	0.1100	0.3797
1A2	1B2	98.7268	<.0001	<.0001
1B1	1B2	44.6526	<.0001	<.0001

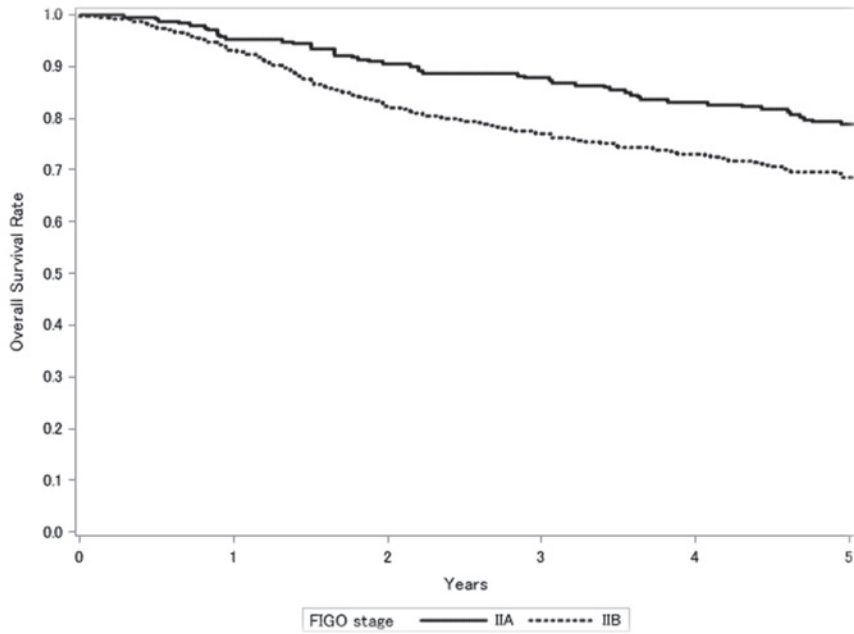
Figure 4.
Kaplan-Meier Estimated Overall Survival Curves of Stage I Cervical Cancer Patients by
Histological Type, Treatment Started in 2007



Test of Equality over Strata			
Test	Chi-Square	DF	Pr >Chi-Square
Log-rank	42.831	3	<.0001
Wilcoxon	46.2438	3	<.0001
-2Log(LR)	28.5551	3	<.0001

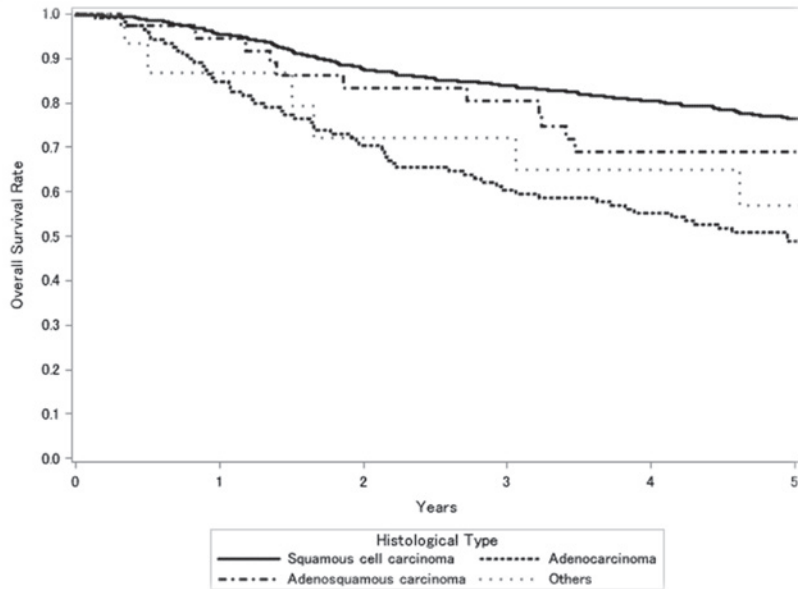
Adjustment for Multiple Comparisons for the Log-rank Test				
Strata Comparison		Chi-Square	p-Values	
Histological Type	Histological Type		Raw	Tukey-Kramer
Squamous cell carcinoma	Adenocarcinoma	20.2976	<.0001	<.0001
Squamous cell carcinoma	Adenosquamous carcinoma	13.5752	0.0002	0.0013
Squamous cell carcinoma	Others	34.4982	<.0001	<.0001
Adenocarcinoma	Adenosquamous carcinoma	9.6161	0.0019	0.0104
Adenocarcinoma	Others	1.7457	0.1864	0.5493
Adenosquamous carcinoma	Others	10.2126	0.0014	0.0076

Figure 5.
Kaplan-Meier Estimated Overall Survival Curves of Cervical Cancer Patients by
FIGO Stage II Substage, Treatment Started in 2007



Test of Equality over Strata			
Test	Chi-Square	DF	Pr > Chi-Square
Log-rank	8.5459	1	0.0035
Wilcoxon	9.5630	1	0.0020
-2Log (LR)	9.1467	1	0.0025

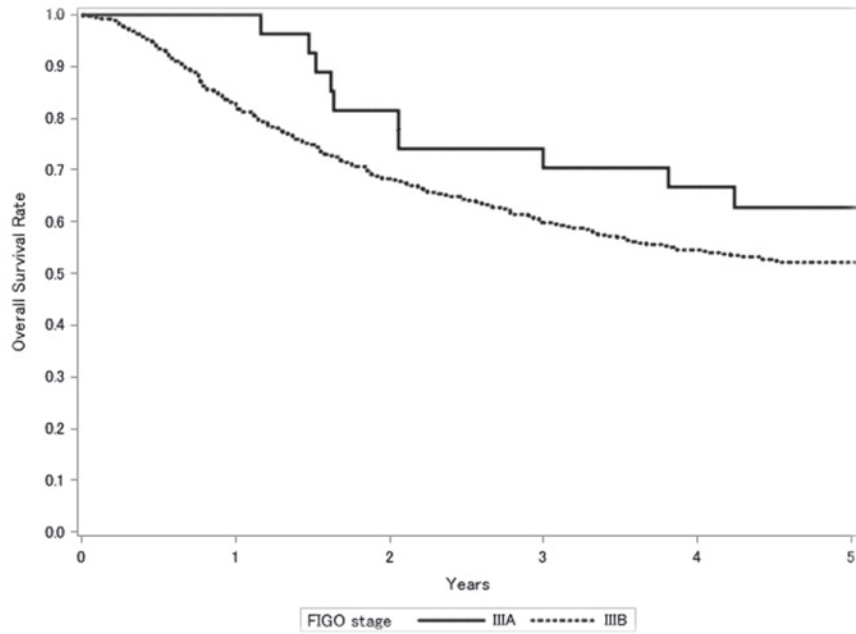
Figure 6.
Kaplan-Meier Estimated Overall Survival Curves of Stage II Cervical Cancer Patients by Histological Type, Treatment Started in 2007



Test of Equality over Strata			
Test	Chi-Square	DF	Pr > Chi-Square
Log-rank	44.7646	3	<.0001
Wilcoxon	46.6065	3	<.0001
-2Log (LR)	37.1248	3	<.0001

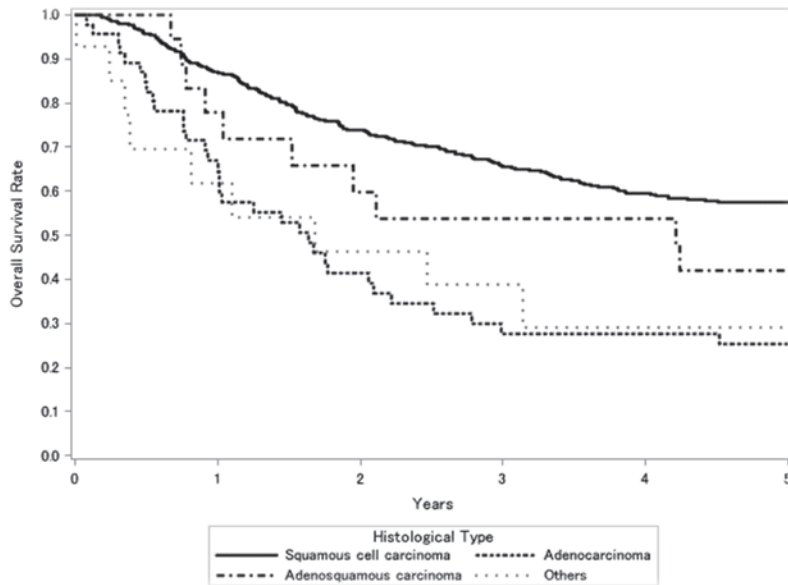
Adjustment for Multiple Comparisons for the Log-rank Test				
Strata Comparison		Chi-Square	p-Values	
Histological Type	Histological Type		Raw	Tukey-Kramer
Squamous cell carcinoma	Adenocarcinoma	43.3545	<.0001	<.0001
Squamous cell carcinoma	Adenosquamous carcinoma	22.3293	<.0001	<.0001
Squamous cell carcinoma	Others	33.2448	<.0001	<.0001
Adenocarcinoma	Adenosquamous carcinoma	25.8906	<.0001	<.0001
Adenocarcinoma	Others	29.8024	<.0001	<.0001
Adenosquamous carcinoma	Others	0.1464	0.7020	0.9809

Figure 7.
Kaplan-Meier Estimated Overall Survival Curves of Cervical Cancer Patients by
FIGO Stage III Substage, Treatment Started in 2007



Test of Equality over Strata			
Test	Chi-Square	DF	Pr >Chi-Square
Log-rank	0.7711	1	0.3799
Wilcoxon	2.2147	1	0.1367
-2Log (LR)	0.8643	1	0.3525

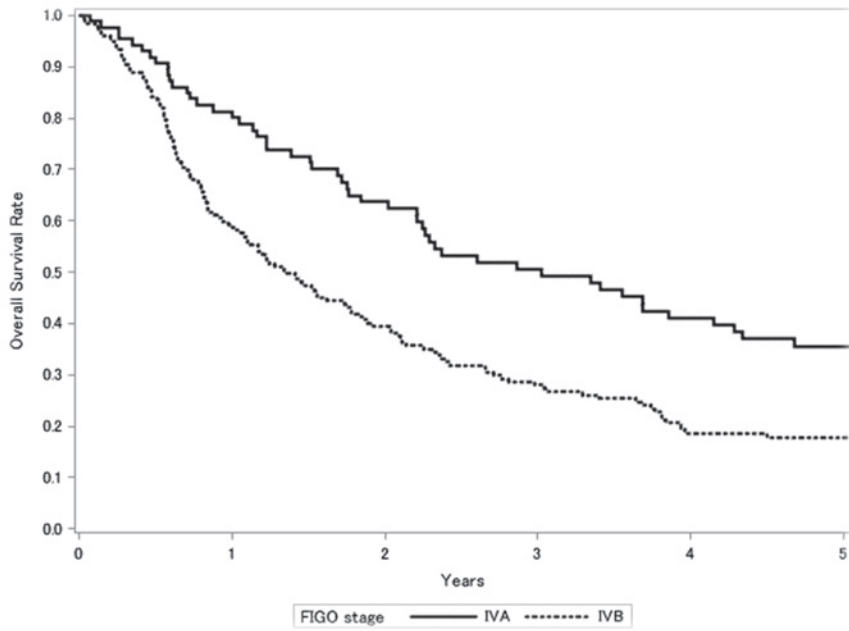
Figure 8.
Kaplan-Meier Estimated Overall Survival Curves of Stage III Cervical Cancer Patients by Histological Type, Treatment Started in 2007



Test of Equality over Strata			
Test	Chi-Square	DF	Pr > Chi-Square
Log-rank	32.3971	3	<.0001
Wilcoxon	37.2175	3	<.0001
-2Log (LR)	28.3858	3	<.0001

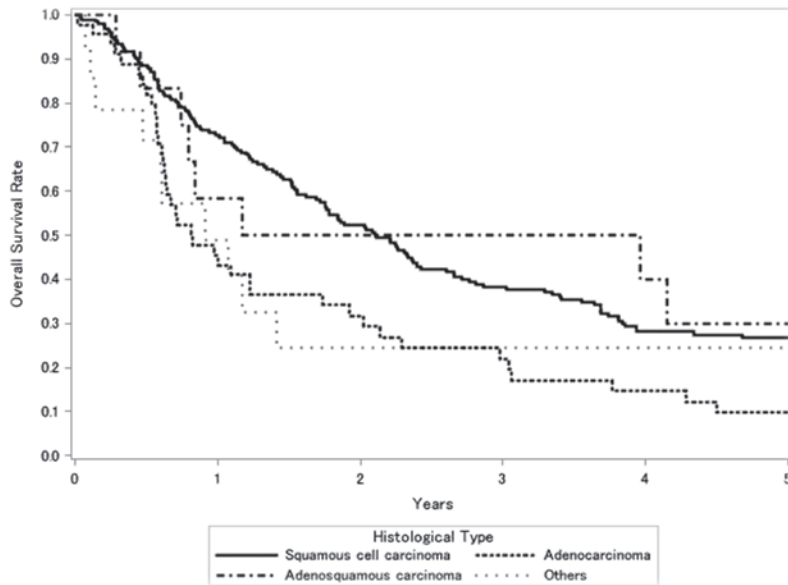
Adjustment for Multiple Comparisons for the Log-rank Test				
Strata Comparison		Chi-Square	p-Values	
Histological Type	Histological Type		Raw	Tukey-Kramer
Squamous cell carcinoma	Adenocarcinoma	30.3114	<.0001	<.0001
Squamous cell carcinoma	Adenosquamous carcinoma	17.0484	<.0001	0.0002
Squamous cell carcinoma	Others	26.1880	<.0001	<.0001
Adenocarcinoma	Adenosquamous carcinoma	11.5638	0.0007	0.0038
Adenocarcinoma	Others	9.8288	0.0017	0.0093
Adenosquamous carcinoma	Others	0.5741	0.4486	0.8734

Figure 9.
Kaplan-Meier Estimated Overall Survival Curves of Cervical Cancer Patients by
FIGO Stage IV Substage, Treatment Started in 2007



Test of Equality over Strata			
Test	Chi-Square	DF	Pr > Chi-Square
Log-rank	14.1730	1	0.0002
Wilcoxon	14.2854	1	0.0002
-2Log (LR)	18.4384	1	<.0001

Figure 10.
Kaplan-Meier Estimated Overall Survival Curves of Stage IV Cervical Cancer Patients by
Histological Type, Treatment Started in 2007



Test of Equality over Strata			
Test	Chi-Square	DF	Pr >Chi-Square
Log-rank	12.7073	3	0.0053
Wilcoxon	15.3550	3	0.0015
-2Log (LR)	12.9195	3	0.0048

Adjustment for Multiple Comparisons for the Log-rank Test				
Strata Comparison		Chi-Square	p-Values	
Histological Type	Histological Type		Raw	Tukey-Kramer
Squamous cell carcinoma	Adenocarcinoma	10.7531	0.0010	0.0057
Squamous cell carcinoma	Adenosquamous carcinoma	4.0879	0.0432	0.1799
Squamous cell carcinoma	Others	8.1650	0.0043	0.0222
Adenocarcinoma	Adenosquamous carcinoma	8.0479	0.0046	0.0236
Adenocarcinoma	Others	4.3972	0.0360	0.1540
Adenosquamous carcinoma	Others	1.4471	0.2290	0.6249

	A	B	C	D	E	F	G	H	I	J	K
	Institution	Total No. Treated	no description	Alive with no Evidence of the Disease	Alive with Carcinoma	Alive with or without Carcinoma Unknown	Died of Carcinoma	Died of Other Malignant Tumor	Died of Intercurrent Disease	Cause of Death Unknown	Lost to follow-up
○	230034 NAGOYA CITY UNIV.	23	0	17	1	0	5	0	0	0	0
○	230035 FUJITA HEALTH UNIV.	20	0	19	1	0	0	0	0	0	0
○	230040 AICHI MED. UNIV.	18	2	12	0	0	2	0	1	0	1
○	230052 AICHI CANCER CENTER	56	0	42	3	0	10	1	0	0	0
○	240002 MIE PREF. GENERAL MED. CENTER	14	0	11	0	0	3	0	0	0	0
	240003 YOKKAICHI MUNI. HOSP	9	0	6	0	0	0	0	0	0	3
○	240009 MIE UNIV.	35	0	25	1	0	4	0	1	0	4
○	240015 ISE RED CROSS HOSP.	18	0	14	1	0	1	0	0	0	2
	250001 OHTSU RED CROSS HOSP.	14	0	8	1	0	1	0	0	0	4
○	250003 SHIGA UNIV. OF MED. SCIENCE	19	0	14	0	0	4	0	0	0	1
	250006 OMIHACHIMAN COMMUNITY MED. CENTER	1	1	0	0	0	0	0	0	0	0
○	250008 SHIGA MED. CENTER FOR ADULTS	23	0	18	0	0	2	0	0	0	3
○	260002 KYOTO 2ND RED CROSS HOSP.	22	1	17	0	0	4	0	0	0	0
○	260003 KYOTO PREF. UNIV. OF MED.	9	0	6	0	0	2	0	0	0	1
○	260007 KYOTO 1ST RED CROSS HOSP.	26	0	15	1	0	4	1	1	0	4
○	260009 KYOTO UNIV.	28	0	23	0	0	5	0	0	0	0
○	260013 KYOTO KATSURA HOSP.	1	0	0	0	0	1	0	0	0	0
	260017 SAISEIKAI KYOTO HOSP.	7	6	0	0	0	0	0	0	0	1
○	270003 KITANO HOSP.	43	0	33	1	0	4	0	0	0	5
	270007 OSAKA CITY GENERAL HOSP.	32	25	0	0	0	3	0	0	1	3
○	270009 OSAKA NATIONAL HOSP.	51	0	38	0	0	4	0	2	0	7
	270013 OSAKA POLICE HOSP.	14	1	6	0	0	0	0	1	0	6
	270018 NISSAY HOSP.	7	7	0	0	0	0	0	0	0	0
	270032 SAISEIKAI SUITA HOSP.	12	12	0	0	0	0	0	0	0	0
○	270035 OSAKA UNIV.	65	0	50	6	0	9	0	0	0	0
○	270041 OSAKA MED. COLL.	35	0	24	0	0	5	0	0	0	6
○	270042 KANSAI MED. UNIV.	15	0	12	0	0	0	0	0	0	3
	270056 KINKI UNIV.	30	5	16	4	0	2	0	0	1	2
	270060 SAKAI CITY HOSP.	6	6	0	0	0	0	0	0	0	0
	270062 OSAKA ROSAI HOSP.	30	0	19	0	0	3	0	0	0	8
○	270101 OSAKA MED. CENTER FOR CANCER AND CARDIOVASCULAR DISEASES	49	0	36	0	0	10	1	0	0	2
○	280002 KOBE CITY MED. CENTER GENERAL HOSP.	26	0	18	1	0	2	0	0	0	5
	280010 KOBE MED. CENTER	7	1	3	1	0	1	0	0	0	1
	280012 HYOGO PREF. AWAJI MED. CENTER	12	12	0	0	0	0	0	0	0	0
○	280015 KANSAI ROSAI HOSP.	29	1	24	1	0	3	0	0	0	0
	280021 HYOGO MED. COLL.	20	20	0	0	0	0	0	0	0	0
○	280028 TOYOOKA PUBLIC HOSP.	8	0	7	1	0	0	0	0	0	0
○	280030 HIMEJI RED CROSS HOSP.	17	2	14	0	0	1	0	0	0	0
	280031 HIMEJI MED. CENTER	5	5	0	0	0	0	0	0	0	0
○	280033 HYOGO CANCER CENTER	96	0	82	3	0	11	0	0	0	0
○	290003 NARA PREF. NARA HOSP.	8	0	6	0	0	1	0	0	0	1
○	290004 TENRI HOSP.	26	0	18	3	0	3	0	1	0	1
○	290007 NARA MED. UNIV.	20	1	13	1	0	2	0	0	0	3
	290009 NARA PREF. WESTERN MED. CENTER	4	4	0	0	0	0	0	0	0	0
○	290019 YAMATO TAKADA MUNI. HOSP.	8	0	7	1	0	0	0	0	0	0
○	300002 JAPANESE RED CROSS WAKAYAMA MED. CENTER	28	0	15	4	0	5	0	0	0	4
	300003 WAKAYAMA MED. UNIV.	23	23	0	0	0	0	0	0	0	0
○	310001 TOTTORI PREF. CENTRAL HOSP.	7	0	7	0	0	0	0	0	0	0
○	310007 TOTTORI UNIV.	15	0	12	0	0	3	0	0	0	0
	320003 SHIMANE UNIV.	14	10	0	0	0	2	0	0	0	2
	320004 SHIMANE PREF. CENTRAL HOSP.	9	6	0	0	0	1	0	0	0	2
○	330002 JAPANESE RED CROSS OKAYAMA HOSP.	8	1	5	0	0	2	0	0	0	0
○	330003 KAWASAKI HOSP.	4	0	4	0	0	0	0	0	0	0
	330004 OKAYAMA SAISEIKAI GENERAL HOSP.	7	0	3	0	0	0	0	0	0	4
○	330006 OKAYAMA UNIV.	43	0	35	0	0	3	0	0	0	5
	330007 OKAYAMA MED. CENTER	2	0	0	0	0	0	1	0	0	1
○	330008 KURASHIKI CENTRAL HOSP.	16	0	11	0	0	2	0	0	0	3
	330009 KAWASAKI MED. SCH.	2	2	0	0	0	0	0	0	0	0
○	330010 KURASHIKI MED. CENTER	27	0	23	0	0	3	0	0	0	1

	A	B	C	D	E	F	G	H	I	J	K
	Institution	Total No. Treated	no description	Alive with no Evidence of the Disease	Alive with Carcinoma	Alive with or without Carcinoma Unknown	Died of Carcinoma	Died of Other Malignant Tumor	Died of Intercurrent Disease	Cause of Death Unknown	Lost to follow-up
○	340001 FUKUYAMA MED. CENTER	20	0	13	0	0	5	0	1	0	1
	340007 HIROSHIMA CITY HOSP.	38	0	21	3	0	5	0	0	0	9
○	340010 HIROSHIMA CITY ASA HOSP.	20	0	13	2	0	2	0	1	0	2
○	340012 HIROSHIMA UNIV.	22	0	18	1	0	2	0	0	0	1
○	340014 HIROSHIMA PREF. HOSP.	17	0	16	0	0	0	0	0	1	0
○	340015 KURE MED. CENTER	26	0	19	0	0	2	1	0	0	4
○	340018 HIROSHIMA GENERAL HOSP.	15	1	11	0	0	0	0	0	0	3
	340031 HIGASHIHIROSHIMA MED. CENTER	1	1	0	0	0	0	0	0	0	0
	350003 TOKUYAMA CENTRAL HOSP.	21	21	0	0	0	0	0	0	0	0
○	350008 YAMAGUCHI RED CROSS HOSP.	12	1	10	0	0	0	1	0	0	0
○	350009 YAMAGUCHI UNIV.	22	0	19	0	0	3	0	0	0	0
	360002 TOKUSHIMA MUNI. HOSP.	3	0	2	0	0	0	0	0	0	1
	360003 TOKUSHIMA UNIV.	22	0	12	0	0	0	0	0	0	10
○	360005 TOKUSHIMA PREF. CENTRAL HOSP.	2	0	2	0	0	0	0	0	0	0
○	370001 TAKAMATSU RED CROSS HOSP.	12	0	11	0	0	1	0	0	0	0
○	370002 TAKAMATSU MUNI. HOSP.	5	0	4	0	0	1	0	0	0	0
○	370003 KAGAWA PREF. CENTRAL HOSP.	16	0	13	0	0	1	0	1	0	1
○	380001 SHIKOKU CANCER CENTER	63	0	52	1	0	7	0	2	0	1
	380005 MATSUYAMA RED CROSS HOSP.	6	6	0	0	0	0	0	0	0	0
○	380006 EHIME UNIV.	24	0	17	0	0	4	0	1	0	2
	390003 KOCHI HEALTH SCIENCES CENTER	16	0	7	0	0	3	1	0	0	5
	390006 KOCHI UNIV.	13	0	9	0	0	0	0	1	0	3
	400003 KOKURA MED. CENTER	8	8	0	0	0	0	0	0	0	0
○	400008 <small>UNIV. OF OCCUPATIONAL AND ENVIRONMENTAL HEALTH</small>	27	0	19	1	0	3	1	1	0	2
○	400010 KYUSHU MED. CENTER	14	0	12	1	0	1	0	0	0	0
○	400012 KYUSHU UNIV.	49	0	42	0	0	6	0	0	0	1
○	400013 FUKUOKA UNIV.	28	0	26	0	0	2	0	0	0	0
○	400014 FUKUOKA RED CROSS HOSP.	12	0	7	1	0	1	0	1	0	2
○	400020 KURUME UNIV.	30	0	20	2	0	7	0	0	0	1
○	400026 SAISEIKAI FUKUOKA GENERAL HOSP.	30	0	22	0	0	2	0	0	0	6
○	400040 KYUSHU CANCER CENTER	43	0	38	0	0	2	1	0	1	1
○	410005 SAGA UNIV.	23	0	17	0	0	3	0	0	0	3
○	420001 NAGASAKI HARBOR MED. CENTER CITY HOSP.	16	0	13	0	0	1	2	0	0	0
○	420002 NAGASAKI UNIV.	24	0	21	0	0	2	0	0	0	1
	420003 RED CROSS NAGASAKI ATOMIC E	17	16	0	0	0	1	0	0	0	0
	420006 SASEBO KYOSAI HOSP.	17	0	10	0	0	3	0	0	0	4
○	430001 KUMAMOTO MED. CENTER	33	1	27	0	0	5	0	0	0	0
○	430002 KUMAMOTO UNIV.	32	0	24	1	0	6	0	0	0	1
○	430003 KUMAMOTO CITY HOSP.	26	0	18	0	0	4	1	0	0	3
○	440002 OITA PREF. HOSP.	47	0	33	3	0	4	0	0	0	7
	440005 OITA UNIV.	11	2	7	0	0	0	0	0	0	2
○	450001 MIYAZAKI PREF. HOSP.	21	0	12	0	0	6	0	0	0	3
○	450005 MIYAZAKI UNIV.	16	0	16	0	0	0	0	0	0	0
	460001 KAGOSHIMA UNIV.	28	15	0	0	0	2	0	0	0	11
○	460004 KAGOSHIMA CITY HOSP.	33	0	24	0	0	4	0	0	0	5
○	470008 RYUKYU UNIV.	48	0	42	2	0	4	0	0	0	0
○	470010 OKINAWA PREF. CHUBU HOSP.	16	0	11	1	0	1	0	1	0	2
	Total	5,105	757	3,235	123	0	517	31	44	14	384

Table 1. No. of Patients by Stage and Age

FIGO Stage		Age		~19		20~29		30~39		40~49		50~59		60~69		70~79		80~		Total	
		No.	%	No.	%	No.	%	No.	%	No.	%	No.	%	No.	%	No.	%	No.	%	No.	%
I	A	2	0.1	14	0.4	82	2.2	158	4.3	272	7.4	124	3.4	69	1.9	11	0.3	732	19.9		
	B	1	0.0	4	0.1	59	1.6	131	3.6	492	13.4	320	8.7	155	4.2	32	0.9	1,194	32.4		
	C	0	0.0	1	0.0	3	0.1	35	1.0	106	2.9	158	4.3	116	3.2	27	0.7	446	12.1		
	not cl.	0	0.0	0	0.0	1	0.0	5	0.1	3	0.1	2	0.1	0	0.0	1	0.0	12	0.3		
total		3	0.1	19	0.5	145	3.9	329	8.9	873	23.7	604	16.4	340	9.2	71	1.9	2,384	64.8		
II	A	0	0.0	2	0.1	9	0.2	20	0.5	41	1.1	29	0.8	21	0.6	6	0.2	128	3.5		
	B	0	0.0	0	0.0	11	0.3	31	0.8	47	1.3	33	0.9	36	1.0	9	0.2	167	4.5		
	C	0	0.0	1	0.0	2	0.1	0	0.0	2	0.1	0	0.0	1	0.0	0	0.0	6	0.2		
	not cl.	0	0.0	0	0.0	0	0.0	0	0.0	0	0.0	0	0.0	0	0.0	0	0.0	0	0.0	6	0.2
total		0	0.0	3	0.1	22	0.6	51	1.4	90	2.4	62	1.7	58	1.6	15	0.4	301	8.2		
III	A	0	0.0	3	0.1	20	0.5	63	1.7	173	4.7	82	2.2	45	1.2	11	0.3	397	10.8		
	B	0	0.0	0	0.0	0	0.0	1	0.0	5	0.1	2	0.1	2	0.1	2	0.1	12	0.3		
	C	0	0.0	5	0.1	17	0.5	32	0.9	122	3.3	84	2.3	61	1.7	5	0.1	326	8.9		
	not cl.	0	0.0	0	0.0	0	0.0	0	0.0	3	0.1	1	0.0	2	0.1	1	0.0	7	0.2		
total		0	0.0	8	0.2	37	1.0	96	2.6	303	8.2	169	4.6	110	3.0	19	0.5	742	20.2		
IV	A	0	0.0	0	0.0	1	0.0	3	0.1	5	0.1	4	0.1	5	0.1	1	0.0	19	0.5		
	B	0	0.0	1	0.0	10	0.3	16	0.4	81	2.2	80	2.2	34	0.9	7	0.2	229	6.2		
	C	0	0.0	0	0.0	0	0.0	1	0.0	3	0.1	1	0.0	1	0.0	0	0.0	6	0.2		
	not cl.	0	0.0	0	0.0	0	0.0	0	0.0	0	0.0	0	0.0	0	0.0	0	0.0	0	0.0	6	0.2
total		0	0.0	1	0.0	11	0.3	20	0.5	89	2.4	85	2.3	40	1.1	8	0.2	254	6.9		
Total		3	0.1	31	0.8	215	5.8	496	13.5	1,355	36.8	920	25.0	548	14.9	113	3.1	3,681			

Table 2. No. of Patients by Treatment Method

FIGO Stage		Treatment		Surgery								Radiation				Chem.Immun. Hormon		Other		Total	
				(alone)		Radiation		Radiation Chem.Immun. Hormon		Chem.Immun. Hormon		(alone)		Chem.Immun. Hormon							
		No.	%	No.	%	No.	%	No.	%	No.	%	No.	%	No.	%	No.	%	No.	%		
I	A	644	17.5	1	0.0	0	0.0	40	1.1	9	0.2	0	0.0	34	0.9	4	0.1	732	19.9		
	B	944	25.6	5	0.1	2	0.1	226	6.1	13	0.4	0	0.0	2	0.1	2	0.1	1,194	32.4		
	C	144	3.9	21	0.6	2	0.1	270	7.3	5	0.1	0	0.0	3	0.1	1	0.0	446	12.1		
	not cl.	8	0.2	0	0.0	0	0.0	2	0.1	1	0.0	0	0.0	1	0.0	0	0.0	12	0.3		
total		1,740	47.3	27	0.7	4	0.1	538	14.6	28	0.8	0	0.0	40	1.1	7	0.2	2,384	64.8		
II	A	64	1.7	5	0.1	2	0.1	57	1.5	0	0.0	0	0.0	0	0.0	0	0.0	128	3.5		
	B	54	1.5	7	0.2	1	0.0	100	2.7	4	0.1	0	0.0	1	0.0	0	0.0	167	4.5		
	C	1	0.0	0	0.0	0	0.0	3	0.1	1	0.0	0	0.0	1	0.0	0	0.0	6	0.2		
	not cl.	1	0.0	0	0.0	0	0.0	3	0.1	1	0.0	0	0.0	1	0.0	0	0.0	6	0.2		
total		119	3.2	12	0.3	3	0.1	160	4.3	5	0.1	0	0.0	2	0.1	0	0.0	301	8.2		
III	A	87	2.4	6	0.2	5	0.1	295	8.0	0	0.0	0	0.0	3	0.1	1	0.0	397	10.8		
	B	0	0.0	3	0.1	2	0.1	7	0.2	0	0.0	0	0.0	0	0.0	0	0.0	12	0.3		
	C	26	0.7	11	0.3	23	0.6	258	7.0	3	0.1	0	0.0	4	0.1	1	0.0	326	8.9		
	not cl.	0	0.0	0	0.0	0	0.0	1	0.0	3	0.1	0	0.0	3	0.1	0	0.0	7	0.2		
total		113	3.1	20	0.5	30	0.8	561	15.2	6	0.2	0	0.0	10	0.3	2	0.1	742	20.2		
IV	A	3	0.1	0	0.0	0	0.0	14	0.4	1	0.0	0	0.0	1	0.0	0	0.0	19	0.5		
	B	13	0.4	1	0.0	11	0.3	149	4.0	5	0.1	5	0.1	43	1.2	2	0.1	229	6.2		
	C	1	0.0	0	0.0	0	0.0	2	0.1	2	0.1	0	0.0	1	0.0	0	0.0	6	0.2		
	not cl.	1	0.0	0	0.0	0	0.0	2	0.1	2	0.1	0	0.0	1	0.0	0	0.0	6	0.2		
total		17	0.5	1	0.0	11	0.3	165	4.5	8	0.2	5	0.1	45	1.2	2	0.1	254	6.9		
Total		1,989	54.0	60	1.6	48	1.3	1,424	38.7	47	1.3	5	0.1	97	2.6	11	0.3	3,681			

Table 3. No. of Patients by Histological Type

Histological Type		Endometrioid								Serous		Clear cell		Mucinous		Squamous		Mixed	
		Grade1		Grade2		Grade3		unknown											
FIGO Stage		No.	%	No.	%	No.	%	No.	%	No.	%	No.	%	No.	%	No.	%	No.	%
I	A	564	15.3	76	2.1	20	0.5	24	0.7	14	0.4	18	0.5	2	0.1	1	0.0	2	0.1
	B	705	19.2	254	6.9	113	3.1	20	0.5	24	0.7	21	0.6	3	0.1	1	0.0	14	0.4
	C	186	5.1	130	3.5	55	1.5	8	0.2	12	0.3	4	0.1	4	0.1	2	0.1	8	0.2
	not cl.	2	0.1	1	0.0	0	0.0	3	0.1	0	0.0	0	0.0	0	0.0	0	0.0	0	0.0
	total	0	0.0	0	0.0	0	0.0	0	0.0	0	0.0	0	0.0	0	0.0	0	0.0	0	0.0
II	A	67	1.8	37	1.0	10	0.3	3	0.1	3	0.1	4	0.1	1	0.0	0	0.0	0	0.0
	B	59	1.6	57	1.5	21	0.6	7	0.2	5	0.1	5	0.1	1	0.0	1	0.0	3	0.1
	not cl.	3	0.1	2	0.1	0	0.0	0	0.0	0	0.0	1	0.0	0	0.0	0	0.0	0	0.0
	total	0	0.0	0	0.0	0	0.0	0	0.0	0	0.0	0	0.0	0	0.0	0	0.0	0	0.0
	III	A	176	4.8	96	2.6	41	1.1	8	0.2	22	0.6	14	0.4	1	0.0	1	0.0	5
B		4	0.1	2	0.1	1	0.0	1	0.0	3	0.1	1	0.0	0	0.0	0	0.0	0	0.0
C		75	2.0	86	2.3	64	1.7	14	0.4	21	0.6	10	0.3	6	0.2	1	0.0	17	0.5
not cl.		0	0.0	1	0.0	0	0.0	3	0.1	0	0.0	0	0.0	0	0.0	0	0.0	0	0.0
total		0	0.0	0	0.0	0	0.0	0	0.0	0	0.0	0	0.0	0	0.0	0	0.0	0	0.0
IV	A	3	0.1	3	0.1	2	0.1	4	0.1	1	0.0	0	0.0	0	0.0	1	0.0	0	0.0
	B	25	0.7	27	0.7	42	1.1	6	0.2	41	1.1	18	0.5	1	0.0	1	0.0	3	0.1
	not cl.	0	0.0	0	0.0	1	0.0	2	0.1	0	0.0	1	0.0	0	0.0	0	0.0	0	0.0
	total	0	0.0	0	0.0	0	0.0	0	0.0	0	0.0	0	0.0	0	0.0	0	0.0	0	0.0
	Total	1,869	50.8	772	21.0	370	10.1	103	2.8	146	4.0	97	2.6	19	0.5	9	0.2	52	1.4

Histological Type		Undifferentiated		Carcinofibroma		Carcinosarcoma		Unknown		Total	
		No.	%	No.	%	No.	%	No.	%	No.	%
I	A	2	0.1	0	0.0	4	0.1	5	0.1	732	19.9
	B	4	0.1	0	0.0	32	0.9	3	0.1	1,194	32.4
	C	1	0.0	0	0.0	29	0.8	7	0.2	446	12.1
	not cl.	0	0.0	0	0.0	0	0.0	6	0.2	12	0.3
	total	0	0.0	0	0.0	0	0.0	0	0.0	0	0.0
II	A	0	0.0	0	0.0	3	0.1	0	0.0	128	3.5
	B	1	0.0	0	0.0	6	0.2	1	0.0	167	4.5
	not cl.	0	0.0	0	0.0	0	0.0	0	0.0	6	0.2
	total	0	0.0	0	0.0	0	0.0	0	0.0	0	0.0
	III	A	1	0.0	0	0.0	30	0.8	2	0.1	397
B		0	0.0	0	0.0	0	0.0	0	0.0	12	0.3
C		4	0.1	0	0.0	24	0.7	4	0.1	326	8.9
not cl.		0	0.0	0	0.0	1	0.0	2	0.1	7	0.2
total		0	0.0	0	0.0	0	0.0	0	0.0	0	0.0
IV	A	1	0.0	0	0.0	2	0.1	2	0.1	19	0.5
	B	7	0.2	0	0.0	41	1.1	17	0.5	229	6.2
	not cl.	0	0.0	0	0.0	1	0.0	1	0.0	6	0.2
	total	0	0.0	0	0.0	0	0.0	0	0.0	0	0.0
	Total	21	0.6	0	0.0	173	4.7	50	1.4	3,681	

Table 4. 5-Year Results, Treatment Started in 2007

5-year result	No. of patients	%
Alive with no evidence of the disease	2,859	77.7
Alive with carcinoma	108	2.9
Alive with or without carcinoma unknown	0	0.0
Died of carcinoma	433	11.8
Died of other malignant tumor	25	0.7
Died of intercurrent disease	41	1.1
Cause of death unknown	11	0.3
Lost to follow-up	204	5.5
Total	3,681	

Table 5. 5-Year Survival by Stage, Treatment Started in 2007

FIGO Stage		Patients treated		5-year survival		Lost to follow-up
		No.		%		
I	A	732	2,384	96.4	95.3	141/2,384 (5.9%)
	B	1,194		96.3		
	C	446		90.7		
	not cl.	12		100.0		
II	A	128	301	90.6	89.8	18/301 (6.0%)
	B	167		88.8		
	not cl.	6		100.0		
III	A	397	742	83.4	75.6	32/742 (4.3%)
	B	12		63.6		
	C	326		68.2		
	not cl.	7		0.0		
IV	A	19	254	53.7	29.1	13/254 (5.1%)
	B	229		27.6		
	not cl.	6		20.8		
Total		3,681				

Table 6. 5-Year Survival by Histological Type, Treatment Started in 2007

Histology Type	Patients treated		5-year survival	Lost to follow-up
	No.	%	%	
Endometrioid type G1	1,869	50.8	95.4	112/1,869 (6.0%)
Endometrioid type G2	772	21.0	89.2	36/772 (4.7%)
Endometrioid type G3	370	10.1	77.6	12/370 (3.2%)
Serous type	146	4.0	56.8	11/146 (7.5%)
Clear cell type	97	2.6	62.2	4/97 (4.1%)
Carcinosarcoma	173	4.7	55.1	16/173 (9.2%)
Other	254	6.9	72.0	13/254 (5.1%)
Total	3,681			

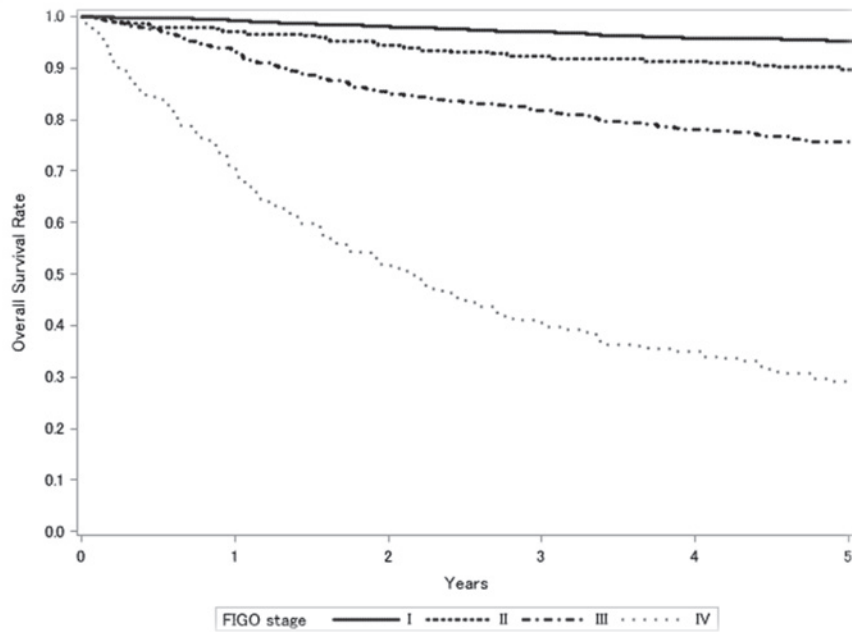
Table 7. 5-Year Survival by Stage and Histological Type, Treatment Started in 2007

FIGO Stage	Histology Type	Patients treated		5-year survival	Lost to follow-up
		No.	%	%	
I	Endometrioid type G1	1,457	61.1	97.8	4/2 (200.0%)
	Endometrioid type G2	461	19.3	94.7	2/2 (100.0%)
	Endometrioid type G3	188	7.9	91.1	1/2 (50.0%)
	Serous type	50	2.1	86.9	0/2 (0.0%)
	Clear cell type	43	1.8	78.6	7/2 (350.0%)
	Carcinosarcoma	65	2.7	79.8	0/2 (0.0%)
	Other	120	5.0	92.9	0/2 (0.0%)
II	Endometrioid type G1	129	42.9	96.0	0/1 (0.0%)
	Endometrioid type G2	96	31.9	93.3	0/1 (0.0%)
	Endometrioid type G3	31	10.3	79.2	1/1 (100.0%)
	Serous type	8	2.7	75.0	0/1 (0.0%)
	Clear cell type	10	3.3	50.8	1/1 (100.0%)
	Carcinosarcoma	9	3.0	64.8	0/1 (0.0%)
	Other	18	6.0	81.9	0/1 (0.0%)
III	Endometrioid type G1	255	34.4	86.8	0/25 (0.0%)
	Endometrioid type G2	185	24.9	81.8	0/25 (0.0%)
	Endometrioid type G3	106	14.3	69.8	0/25 (0.0%)
	Serous type	46	6.2	55.2	0/25 (0.0%)
	Clear cell type	25	3.4	76.0	1/25 (4.0%)
	Carcinosarcoma	55	7.4	46.2	0/25 (0.0%)
	Other	70	9.4	61.3	1/25 (4.0%)
IV	Endometrioid type G1	28	11.0	51.7	0/1 (0.0%)
	Endometrioid type G2	30	11.8	36.2	0/1 (0.0%)
	Endometrioid type G3	45	17.7	34.7	0/1 (0.0%)
	Serous type	42	16.5	18.5	1/1 (100.0%)
	Clear cell type	19	7.5	5.9	1/1 (100.0%)
	Carcinosarcoma	44	17.3	22.8	0/1 (0.0%)
	Other	46	18.1	29.4	0/1 (0.0%)

Table 8. 5-Year Survival by TNM Classification, Treatment Started in 2007

TNM Stage			Patients treated		5-year survival	Lost to follow-up
			No.	%	%	
T1a	N0	M0	737	20.3	96.1	46/737 (6.2%)
T1b	N0	M0	1,231	33.8	96.0	59/1,231 (4.8%)
T1c	N0	M0	465	12.8	90.3	34/465 (7.3%)
T2a	N0	M0	135	3.7	91.3	7/135 (5.2%)
T2b	N0	M0	174	4.8	90.3	13/174 (7.5%)
T3a	N0	M0	268	7.4	84.2	12/268 (4.5%)
T3b	N0	M0	11	0.3	60.0	1/11 (9.1%)
T3c	N0	M0	20	0.5	69.6	3/20 (15.0%)
T4	N0	M0	16	0.4	33.3	1/16 (6.3%)
T1a	N1	M0	5	0.1	100.0	0/5 (0.0%)
T1b	N1	M0	42	1.2	85.6	1/42 (2.4%)
T1c	N1	M0	82	2.3	69.7	2/82 (2.4%)
T2a	N1	M0	8	0.2	87.5	0/8 (0.0%)
T2b	N1	M0	42	1.2	80.4	1/42 (2.4%)
T3a	N1	M0	82	2.3	61.4	4/82 (4.9%)
T3b	N1	M0	11	0.3	27.3	0/11 (0.0%)
T3c	N1	M0	66	1.8	59.7	1/66 (1.5%)
T4	N1	M0	13	0.4	55.6	1/13 (7.7%)
Any T	Any N	M1	229	6.3	27.2	13/229 (5.7%)

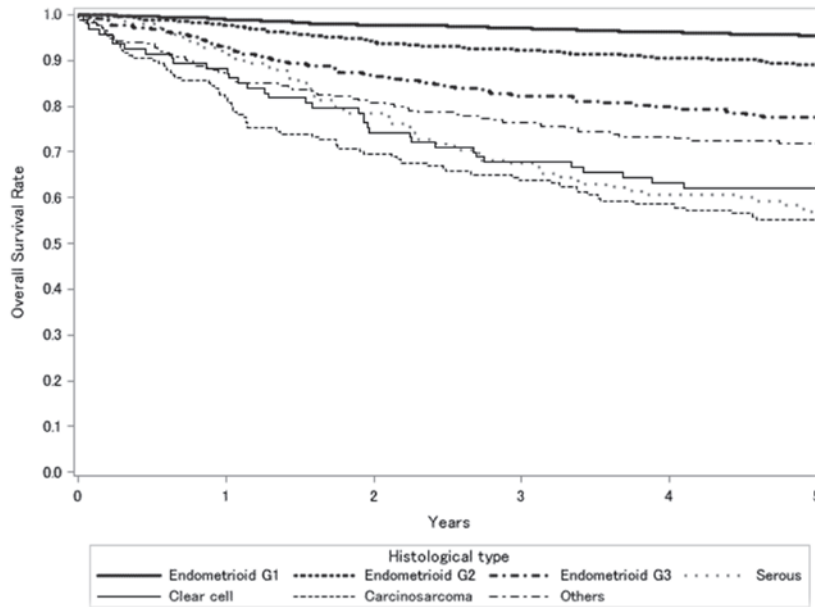
Figure 1.
Kaplan-Meier Estimated Overall Survival Curves of Corpus Cancer Patients by
FIGO Stage, Treatment Started in 2007



Test of Equality over Strata			
Test	Chi-Square	DF	Pr >Chi-Square
Log-rank	1346.8808	3	<.0001
Wilcoxon	1313.7507	3	<.0001
-2Log (LR)	735.4671	3	<.0001

Adjustment for Multiple Comparisons for the Log-rank Test				
Strata Comparison		Chi-Square	p-Values	
FIGO Stage	FIGO Stage		Raw	Tukey-Kramer
I	II	237.7000	<.0001	<.0001
I	III	317.1000	<.0001	<.0001
I	IV	925.5000	<.0001	<.0001
II	III	71.7408	<.0001	<.0001
II	IV	415.0000	<.0001	<.0001
III	IV	36.5689	<.0001	<.0001

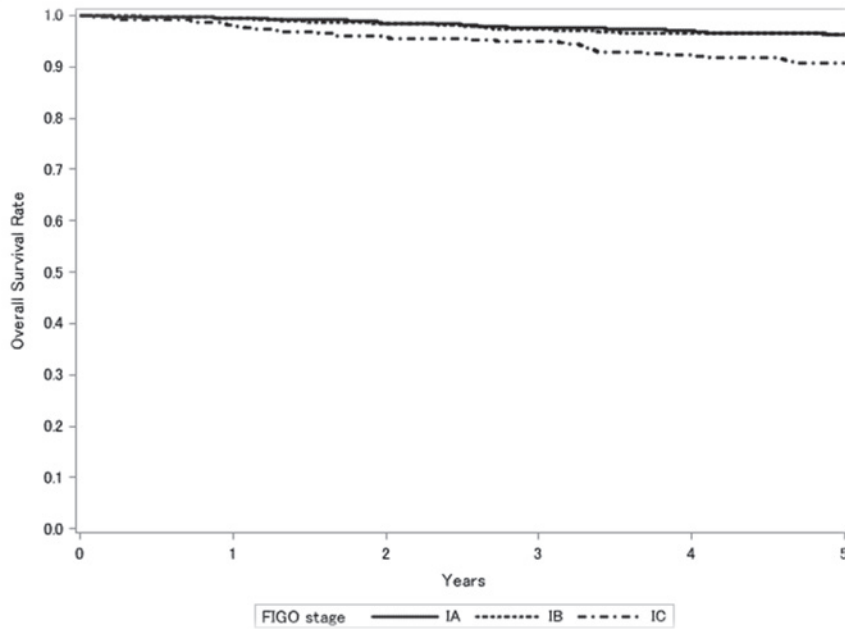
Figure 2.
Kaplan-Meier Estimated Overall Survival Curves of Corpus Cancer Patients by
Histological Type, Treatment Started in 2007



Test of Equality over Strata			
Test	Chi-Square	DF	Pr >Chi-Square
Log-rank	554.9903	6	<.0001
Wilcoxon	559.8901	6	<.0001
-2Log (LR)	445.7802	6	<.0001

Adjustment for Multiple Comparison for the Log-rank Test				
Strata Comparison		Chi-Square	p-Values	
Histological Type	Histological Type		Raw	Tukey-Kramer
Endometrioid type G1	Endometrioid type G2	78.2089	<.0001	<.0001
Endometrioid type G1	Endometrioid type G3	204.8000	<.0001	<.0001
Endometrioid type G1	Serous type	312.7000	<.0001	<.0001
Endometrioid type G1	Clear cell type	282.0000	<.0001	<.0001
Endometrioid type G1	Carcinosarcoma	349.3000	<.0001	<.0001
Endometrioid type G1	Other	262.1000	<.0001	<.0001
Endometrioid type G2	Endometrioid type G3	18.0175	<.0001	0.0004
Endometrioid type G2	Serous type	36.6196	<.0001	<.0001
Endometrioid type G2	Clear cell type	19.0626	<.0001	0.0003
Endometrioid type G2	Carcinosarcoma	54.1521	<.0001	<.0001
Endometrioid type G2	Other	28.7214	<.0001	<.0001
Endometrioid type G3	Serous type	2.0558	0.1516	0.7835
Endometrioid type G3	Clear cell type	1.1374	0.2862	0.9379
Endometrioid type G3	Carcinosarcoma	10.1787	0.0014	0.0240
Endometrioid type G3	Other	0.9292	0.3351	0.9616
Serous type	Clear cell type	13.4207	0.0002	0.0047
Serous type	Carcinosarcoma	5.7332	0.0166	0.2007
Serous type	Other	0.1797	0.6716	0.9996
Clear cell type	Carcinosarcoma	38.8568	<.0001	<.0001
Clear cell type	Other	6.7090	0.0096	0.1289
Carcinosarcoma	Other	6.0863	0.0136	0.1714

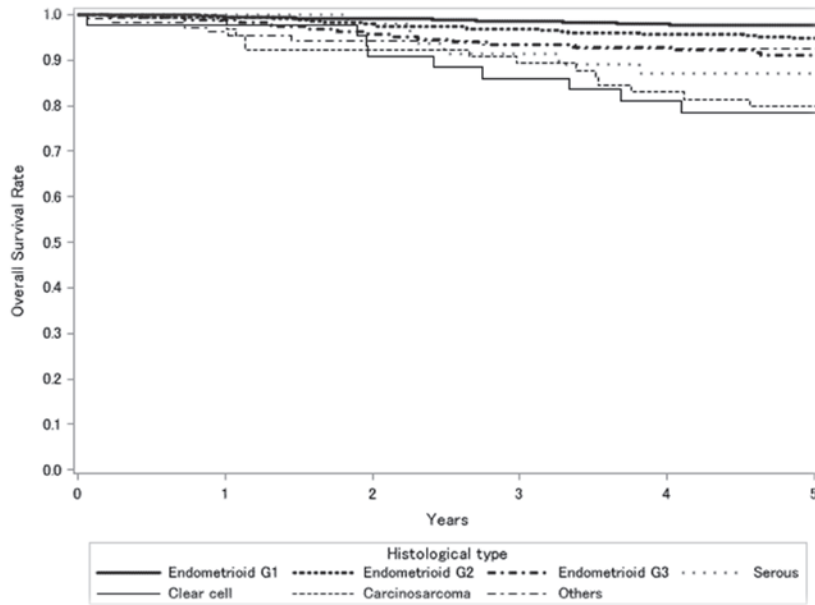
Figure 3.
Kaplan-Meier Estimated Overall Survival Curves of Corpus Cancer Patients by FIGO Stage I Substage, Treatment Started in 2007



Test of Equality over Strata			
Test	Chi-Square	DF	Pr >Chi-Square
Log-rank	28.1396	2	<.0001
Wilcoxon	26.9705	2	<.0001
-2Log (LR)	23.1915	2	<.0001

Adjustment for Multiple Comparisons for the Log-rank Test				
Strata Comparison		Chi-Square	p-Values	
FIGO Stage	FIGO Stage		Raw	Tukey-Kramer
IA	IB	0.2169	0.6414	0.8873
IA	IC	17.2561	<.0001	<.0001
IB	IC	18.3601	<.0001	<.0001

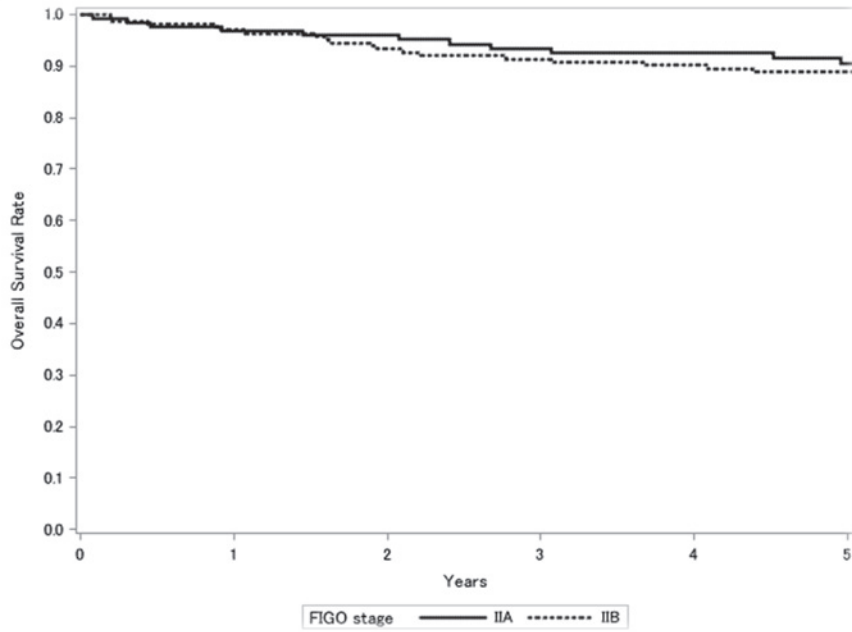
Figure 4.
Kaplan-Meier Estimated Overall Survival Curves of Stage I Corpus Cancer Patients by Histological Type, Treatment Started in 2007



Test of Equality over Strata			
Test	Chi-Square	DF	Pr >Chi-Square
Log-rank	91.8214	6	<.0001
Wilcoxon	94.6044	6	<.0001
-2Log (LR)	64.2446	6	<.0001

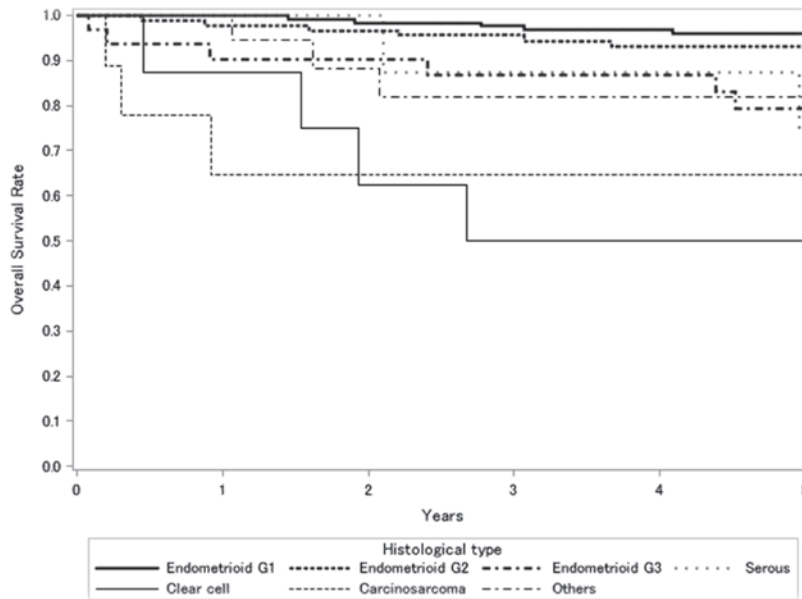
Adjustment for Multiple Comparison for the Log-rank Test				
Strata Comparison		Chi-Square	p-Values	
Histological Type	Histological Type		Raw	Tukey-Kramer
Endometrioid type G1	Endometrioid type G2	19.7457	<.0001	0.0002
Endometrioid type G1	Endometrioid type G3	37.8545	<.0001	<.0001
Endometrioid type G1	Serous type	46.2238	<.0001	<.0001
Endometrioid type G1	Clear cell type	55.8442	<.0001	<.0001
Endometrioid type G1	Carcinosarcoma	59.6175	<.0001	<.0001
Endometrioid type G1	Other	37.4878	<.0001	<.0001
Endometrioid type G2	Endometrioid type G3	0.5567	0.4556	0.9896
Endometrioid type G2	Serous type	0.0186	0.8916	1.0000
Endometrioid type G2	Clear cell type	0.7649	0.3818	0.9764
Endometrioid type G2	Carcinosarcoma	2.1907	0.1388	0.7569
Endometrioid type G2	Other	0.0003	0.9857	1.0000
Endometrioid type G3	Serous type	1.0906	0.2963	0.9437
Endometrioid type G3	Clear cell type	0.0009	0.9761	1.0000
Endometrioid type G3	Carcinosarcoma	0.7102	0.3994	0.9804
Endometrioid type G3	Other	1.2443	0.2646	0.9236
Serous type	Clear cell type	2.6508	0.1035	0.6640
Serous type	Carcinosarcoma	7.5669	0.0059	0.0861
Serous type	Other	0.0705	0.7907	1.0000
Clear cell type	Carcinosarcoma	1.7891	0.1810	0.8343
Clear cell type	Other	2.3882	0.1223	0.7172
Carcinosarcoma	Other	6.1805	0.0129	0.1642

Figure 5.
Kaplan-Meier Estimated Overall Survival Curves of Corpus Cancer Patients by
FIGO Stage II Substage, Treatment Started in 2007



Test of Equality over Strata			
Test	Chi-Square	DF	Pr >Chi-Square
Log-rank	0.0009	1	0.9761
Wilcoxon	0.0982	1	0.7540
-2Log (LR)	0.0071	1	0.9330

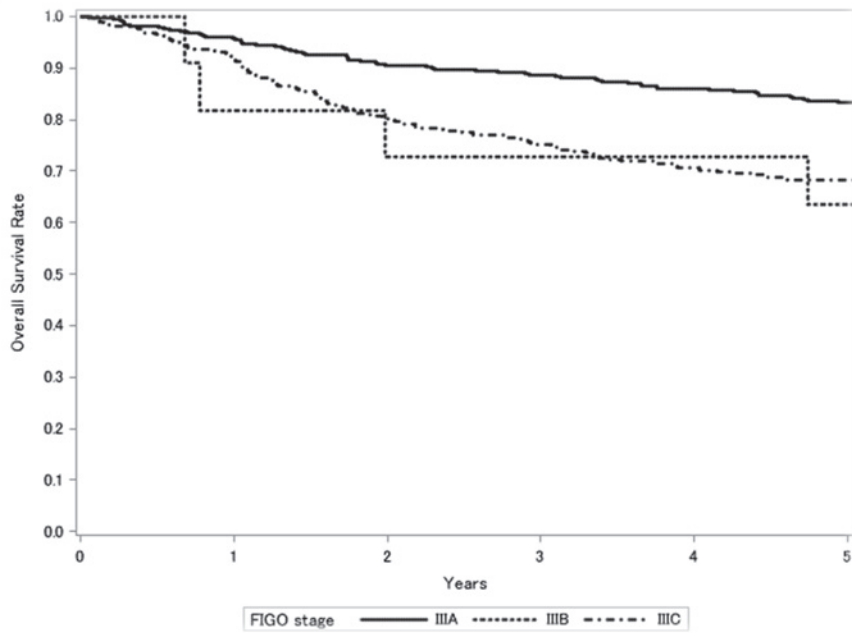
Figure 6.
Kaplan-Meier Estimated Overall Survival Curves of Stage II Corpus Cancer Patients by
Histological Type, Treatment Started in 2007



Test of Equality over Strata			
Test	Chi-Square	DF	Pr >Chi-Square
Log-rank	38.9979	6	<.0001
Wilcoxon	42.5302	6	<.0001
-2Log (LR)	24.9741	6	0.0003

Adjustment for Multiple Comparison for the Log-rank Test				
Strata Comparison		Chi-Square	p-Values	
Histological Type	Histological Type		Raw	Tukey-Kramer
Endometrioid type G1	Endometrioid type G2	1.4499	0.2285	0.8929
Endometrioid type G1	Endometrioid type G3	9.4715	0.0021	0.0341
Endometrioid type G1	Serous type	9.6859	0.0019	0.0307
Endometrioid type G1	Clear cell type	15.3824	<.0001	0.0017
Endometrioid type G1	Carcinosarcoma	13.4809	0.0002	0.0045
Endometrioid type G1	Other	8.7626	0.0031	0.0483
Endometrioid type G2	Endometrioid type G3	2.4341	0.1187	0.7079
Endometrioid type G2	Serous type	1.5928	0.2069	0.8692
Endometrioid type G2	Clear cell type	4.3008	0.0381	0.3683
Endometrioid type G2	Carcinosarcoma	3.1758	0.0747	0.5602
Endometrioid type G2	Other	1.5385	0.2148	0.8784
Endometrioid type G3	Serous type	0.7673	0.3811	0.9762
Endometrioid type G3	Clear cell type	0.0703	0.7909	1.0000
Endometrioid type G3	Carcinosarcoma	0.0421	0.8374	1.0000
Endometrioid type G3	Other	0.4883	0.4847	0.9927
Serous type	Clear cell type	3.2344	0.0721	0.5491
Serous type	Carcinosarcoma	1.2672	0.2603	0.9204
Serous type	Other	0.0154	0.9011	1.0000
Clear cell type	Carcinosarcoma	0.6581	0.4172	0.9839
Clear cell type	Other	1.7886	0.1811	0.8344
Carcinosarcoma	Other	0.5984	0.4392	0.9875

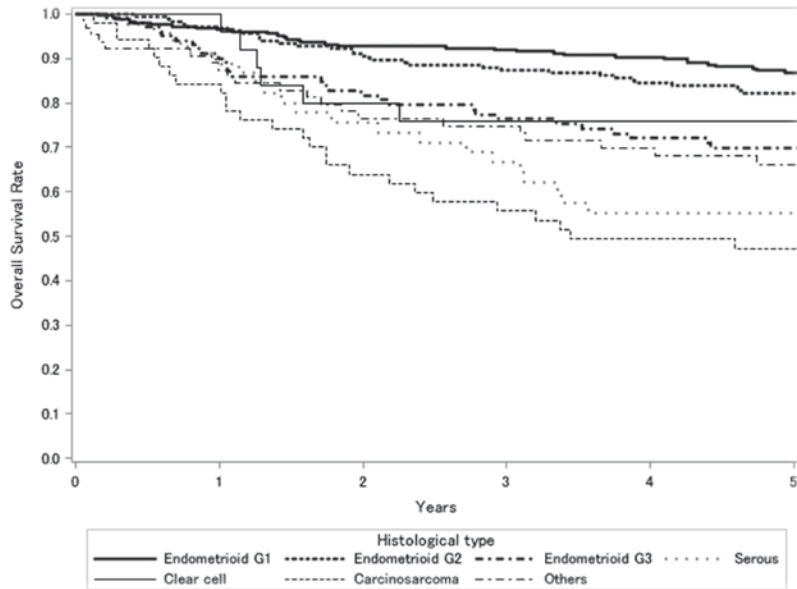
Figure 7.
Kaplan-Meier Estimated Overall Survival Curves of Corpus Cancer Patients by
FIGO Stage III Substage, Treatment Started in 2007



Test of Equality over Strata			
Test	Chi-Square	DF	Pr >Chi-Square
Log-rank	23.8730	2	<.0001
Wilcoxon	24.8539	2	<.0001
-2Log (LR)	24.4078	2	<.0001

Adjustment for Multiple Comparisons for the Log-rank Test				
Strata Comparison		Chi-Square	p-Values	
FIGO Stage	FIGO Stage		Raw	Tukey-Kramer
III A	III B	23.8505	<.0001	<.0001
III A	III C	21.5831	<.0001	<.0001
III B	III C	14.7889	0.0001	0.0004

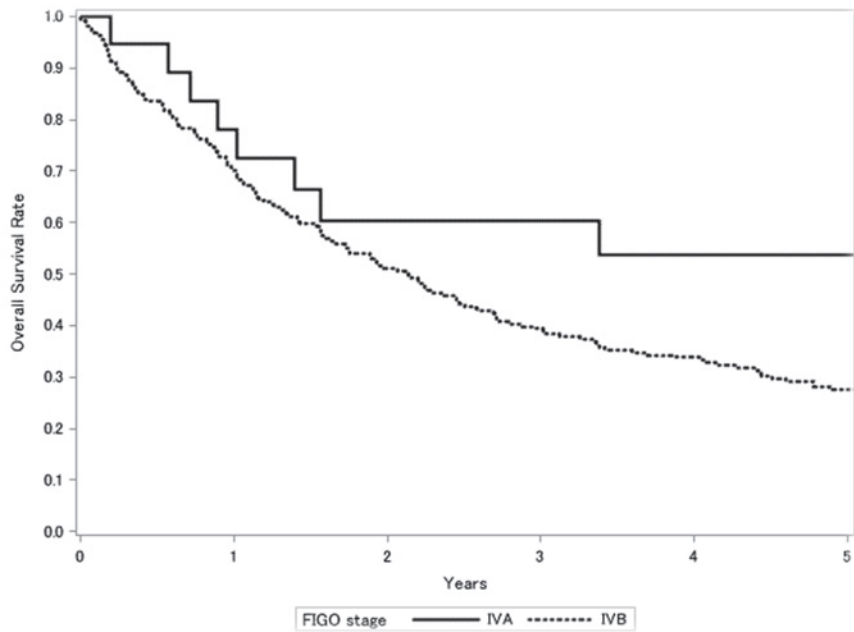
Figure 8.
Kaplan-Meier Estimated Overall Survival Curves of Stage III Corpus Cancer Patients by Histological Type, Treatment Started in 2007



Test of Equality over Strata			
Test	Chi-Square	DF	Pr >Chi-Square
Log-rank	75.1015	6	<.0001
Wilcoxon	73.7788	6	<.0001
-2Log (LR)	66.0756	6	<.0001

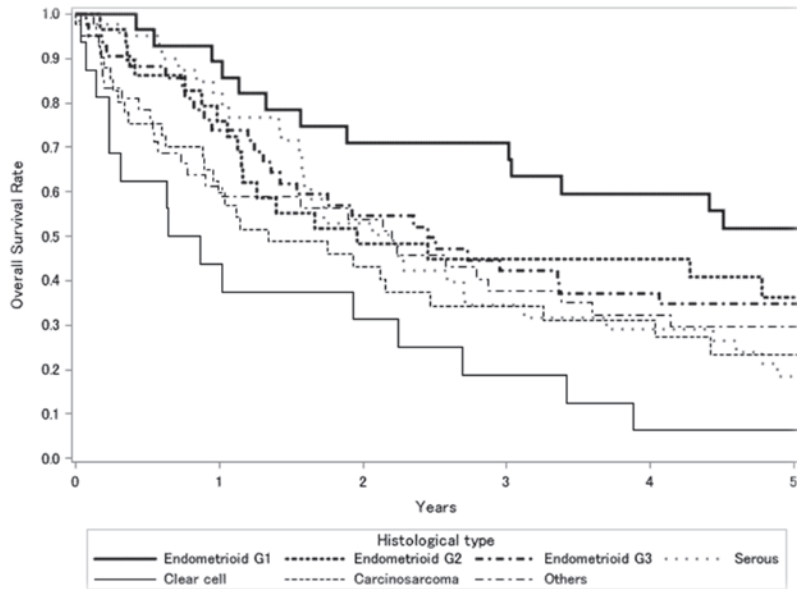
Adjustment for Multiple Comparison for the Log-rank Test				
Strata Comparison		Chi-Square	p-Values	
Histological Type	Histological Type		Raw	Tukey-Kramer
Endometrioid type G1	Endometrioid type G2	3.0714	0.0797	0.5804
Endometrioid type G1	Endometrioid type G3	19.0354	<.0001	0.0003
Endometrioid type G1	Serous type	31.0437	<.0001	<.0001
Endometrioid type G1	Clear cell type	19.7604	<.0001	0.0002
Endometrioid type G1	Carcinosarcoma	44.4419	<.0001	<.0001
Endometrioid type G1	Other	25.9621	<.0001	<.0001
Endometrioid type G2	Endometrioid type G3	6.0795	0.0137	0.1719
Endometrioid type G2	Serous type	11.5079	0.0007	0.0123
Endometrioid type G2	Clear cell type	4.0934	0.0431	0.3998
Endometrioid type G2	Carcinosarcoma	20.9003	<.0001	<.0001
Endometrioid type G2	Other	9.1203	0.0025	0.0405
Endometrioid type G3	Serous type	0.3910	0.5318	0.9960
Endometrioid type G3	Clear cell type	1.7095	0.1910	0.8488
Endometrioid type G3	Carcinosarcoma	4.3364	0.0373	0.3631
Endometrioid type G3	Other	0.1321	0.7162	0.9998
Serous type	Clear cell type	6.9235	0.0085	0.1166
Serous type	Carcinosarcoma	3.4925	0.0616	0.5012
Serous type	Other	0.0744	0.7850	1.0000
Clear cell type	Carcinosarcoma	22.3620	<.0001	<.0001
Clear cell type	Other	4.1784	0.0409	0.3867
Carcinosarcoma	Other	3.8617	0.0494	0.4371

Figure 9.
Kaplan-Meier Estimated Overall Survival Curves of Corpus Cancer Patients by
FIGO Stage IV Substage, Treatment Started in 2007



Test of Equality over Strata			
Test	Chi-Square	DF	Pr >Chi-Square
Log-rank	2.2739	1	0.1316
Wilcoxon	1.8260	1	0.1766
-2Log (LR)	3.1701	1	0.0750

Figure 10.
Kaplan-Meier Estimated Overall Survival Curves of Stage IV Corpus Cancer Patients by
Histological Type, Treatment Started in 2007



Test of Equality over Strata			
Test	Chi-Square	DF	Pr >Chi-Square
Log-rank	19.9075	6	0.0029
Wilcoxon	20.2320	6	0.0025
-2Log (LR)	22.7713	6	0.0009

Adjustment for Multiple Comparison for the Log-rank Test				
Strata Comparison		Chi-Square	p-Values	
Histological Type	Histological Type		Raw	Tukey-Kramer
Endometrioid type G1	Endometrioid type G2	3.0383	0.0813	0.5868
Endometrioid type G1	Endometrioid type G3	1.5090	0.2193	0.8833
Endometrioid type G1	Serous type	5.2228	0.0223	0.2510
Endometrioid type G1	Clear cell type	15.3539	<.0001	0.0017
Endometrioid type G1	Carcinosarcoma	8.7143	0.0032	0.0495
Endometrioid type G1	Other	4.6154	0.0317	0.3242
Endometrioid type G2	Endometrioid type G3	0.1455	0.7029	0.9998
Endometrioid type G2	Serous type	0.4754	0.4905	0.9932
Endometrioid type G2	Clear cell type	3.4550	0.0631	0.5080
Endometrioid type G2	Carcinosarcoma	1.6191	0.2032	0.8647
Endometrioid type G2	Other	0.2701	0.6033	0.9986
Endometrioid type G3	Serous type	0.9726	0.3240	0.9571
Endometrioid type G3	Clear cell type	4.4807	0.0343	0.3426
Endometrioid type G3	Carcinosarcoma	2.3567	0.1247	0.7235
Endometrioid type G3	Other	0.6976	0.4036	0.9813
Serous type	Clear cell type	0.7092	0.3997	0.9805
Serous type	Carcinosarcoma	0.2469	0.6192	0.9989
Serous type	Other	0.0287	0.8654	1.0000
Clear cell type	Carcinosarcoma	0.0596	0.8071	1.0000
Clear cell type	Other	1.1783	0.2777	0.9326
Carcinosarcoma	Other	0.4707	0.4927	0.9934

卵巣悪性腫瘍治療成績

Statement for the Year 2007, Inclusive, Malignant Ovarian Tumor

Table A. 5-Year Results, Stage I-IV

	A	B	C	D	E	F	G	H	I	J	K
	Institution	Total No. Treated	no description	Alive with no Evidence of the Disease	Alive with Carcinoma	Alive with or without Carcinoma Unknown	Died of Carcinoma	Died of Other Malignant Tumor	Died of Intercurrent Disease	Cause of Death Unknown	Lost to follow-up
○	010003 HOKKAIDO CANCER CENTER	29	0	10	2	0	14	0	1	0	2
	010024 NTT EAST JAPAN SAPPORO HOSP.	6	1	2	0	0	1	0	0	0	2
	010025 SAPPORO MED. UNIV.	41	2	30	1	0	1	0	0	0	7
○	010027 HOKKAIDO UNIV.	13	0	6	1	0	3	2	0	0	1
○	010028 KKR SAPPORO MED. CENTER	15	0	11	0	0	4	0	0	0	0
○	010040 ASAHIKAWA MED. COLL.	13	0	7	1	0	4	0	0	0	1
	020004 AOMORI PREF. CENTRAL HOSP.	13	13	0	0	0	0	0	0	0	0
○	020012 HIROSAKI UNIV.	20	0	9	2	0	8	1	0	0	0
○	020017 MISAWA CITY HOSP.	8	0	5	1	0	2	0	0	0	0
○	040004 TOHOKU UNIV.	42	0	9	9	0	16	1	2	0	5
○	040013 SENDAI MED. CENTER	16	0	10	1	0	5	0	0	0	0
○	050001 AKITA RED CROSS HOSP.	8	0	4	0	0	2	1	1	0	0
○	050003 AKITA UNIV.	30	0	22	1	0	6	0	1	0	0
○	060002 YAMAGATA PREF. CENTRAL HOSP.	10	0	8	0	0	2	0	0	0	0
○	060005 YAMAGATA UNIV.	18	0	8	1	0	8	0	0	0	1
	070003 FUKUSHIMA MED. COLL.	23	0	6	4	0	3	0	0	0	10
	080001 TSUCHIURA KYODO GENERAL HOSP	22	22	0	0	0	0	0	0	0	0
	080006 TSUKUBA GAKUEN HOSP.	2	2	0	0	0	0	0	0	0	0
○	080007 TSUKUBA UNIV.	32	0	16	4	0	9	1	3	0	2
	080021 HITACHI GENERAL HOSP.	12	12	0	0	0	0	0	0	0	0
○	080031 TSUKUBA MED. CENTER	11	0	4	1	0	4	0	1	0	1
○	090001 TOCHIGI MED. CENTER	1	0	0	0	0	1	0	0	0	0
○	090004 DOKKYO MED. UNIV.	27	0	15	0	0	12	0	0	0	0
○	090005 SAISEIKAI UTSUNOMIYA HOSP.	12	0	6	1	0	5	0	0	0	0
	090011 ASHIKAGA RED CROSS HOSP.	16	0	7	2	0	3	0	0	0	4
	090015 JICHI MED. UNIV.	40	0	10	3	0	10	0	0	0	17
○	090016 TOCHIGI CANCER CENTER	16	0	10	2	0	2	1	1	0	1
○	100012 GUNMA UNIV.	15	0	8	0	0	7	0	0	0	0
○	110008 SAITAMA MED. CENTER	8	0	6	0	0	2	0	0	0	0
○	110014 KOSHIGAYA MUNI. HOSP.	30	0	17	2	0	9	0	1	0	1
○	110023 SAITAMA NATIONAL HOSP.	10	0	8	0	0	1	0	0	0	1
	110027 NATIONAL DEFENSE MED. COLL.	32	32	0	0	0	0	0	0	0	0
○	110030 SAITAMA CANCER CENTER	30	0	18	0	0	10	1	0	1	0
	120005 CHIBA UNIV.	25	25	0	0	0	0	0	0	0	0
	120009 NIPPON MED. SCH. CHIBA HOKUSOU HOSP.	16	16	0	0	0	0	0	0	0	0
○	120012 MATSUDO CITY HOSP.	10	0	6	0	0	4	0	0	0	0
○	120015 TOKYO DENTAL COLL. ICHIKAWA GENERAL HOSP.	13	0	6	1	0	5	0	0	0	1
	120021 JIKEI UNIV. KASHIWA HOSP.	41	41	0	0	0	0	0	0	0	0
○	120023 JUNTENDO UNIV. URAYASU HOSP.	17	0	10	1	0	6	0	1	0	0
○	120029 ASAHI CENTRAL HOSP.	18	1	6	1	0	10	0	0	0	0
○	120035 KAMEDA MED. CENTER	15	0	8	2	0	4	1	0	0	0
	120042 CHIBA CANCER CENTER	19	13	0	0	0	5	0	0	0	1
	130005 MITSUI MEMORIAL HOSP.	15	2	6	0	0	3	0	0	0	4
○	130009 NATIONAL CANCER CENTER	47	0	28	2	0	13	0	0	1	3
○	130013 JIKEI UNIV.	32	0	12	6	0	9	0	1	0	4
○	130023 JUNTENDO UNIV.	34	0	22	2	0	7	1	1	0	1
○	130024 TOKYO MED. DENT. UNIV.	5	0	3	1	0	0	0	0	0	1
	130025 NIPPON MED. SCH.	14	1	8	1	0	1	0	0	0	3
○	130026 TOKYO UNIV.	43	0	29	1	0	8	0	1	0	4
○	130029 TOKYO WOMENS MED. UNIV. MED. CENTER EAST	15	0	7	1	0	4	1	1	0	1
	130034 JIKEI UNIV. KATSUSHIKA MED. CENTER	9	9	0	0	0	0	0	0	0	0
	130038 TOKYO METRO. BOKUTOH HOSP.	11	11	0	0	0	0	0	0	0	0
○	130044 NTT MED. CENTER TOKYO	8	0	4	0	0	3	0	0	0	1
○	130046 SHOWA UNIV.	11	0	4	2	0	4	0	0	0	1

	A	B	C	D	E	F	G	H	I	J	K
	Institution	Total No. Treated	no description	Alive with no Evidence of the Disease	Alive with Carcinoma	Alive with or without Carcinoma Unknown	Died of Carcinoma	Died of Other Malignant Tumor	Died of Intercurrent Disease	Cause of Death Unknown	Lost to follow-up
○	130050	TOHO UNIV. OMORI MED. CENTER	10	0	5	1	0	4	0	0	0
○	130055	RED CROSS MED. CENTER	14	0	6	0	0	6	0	0	2
○	130061	TOKYO MED. CENTER	16	2	10	1	0	3	0	0	0
○	130063	KOSEI CENTRAL HOSP.	1	0	0	0	0	1	0	0	0
	130064	TOHO UNIV. OHASHI MED. CENTER	4	4	0	0	0	0	0	0	0
	130074	TOKYO MED. UNIV.	22	22	0	0	0	0	0	0	0
○	130077	KEIO UNIV.	37	0	21	4	0	9	0	0	3
	130080	NATIONAL CENTER FOR GLOBAL HEALTH AND MED.	8	8	0	0	0	0	0	0	0
	130085	KOSEI HOSP.	6	6	0	0	0	0	0	0	0
	130092	TEIKYO UNIV.	8	0	3	0	0	2	0	1	2
○	130095	NIHON UNIV.	23	0	10	1	0	11	0	0	1
	130099	MUSASHINO RED CROSS HOSP.	29	18	0	0	0	11	0	0	0
	130100	KYORIN UNIV.	15	0	5	1	0	4	0	0	5
○	130112	MACHIDA MUNI. HOSP.	10	0	3	2	0	3	0	0	2
	130119	NIPPON MED. SCH. TAMA NAGAYAMA HOSP.	6	3	0	0	0	3	0	0	0
○	130122	TOKYO METRO. KOMAGOME HOSP.	17	1	10	0	0	5	0	1	0
○	130124	KYOUNDO HOSP.	6	0	5	0	0	0	0	0	1
○	130125	CANCER INST. HOSP.	64	0	36	4	0	24	0	0	0
	130135	TAMA-NAMBU CHIIKI HOSP.	10	10	0	0	0	0	0	0	0
	130137	TOKAI UNIV. HACHIOJI HOSP.	6	6	0	0	0	0	0	0	0
○	140006	NIPPON MED. SCH. MUSASHI KOSUGI HOSP.	12	0	7	1	0	2	0	0	2
○	140008	KANTO ROSAI HOSP.	8	0	3	0	0	5	0	0	0
○	140012	ST. MARIANNA UNIV.	37	0	19	0	0	11	1	0	6
○	140016	YOKOHAMA ROSAI HOSP.	17	0	7	0	0	8	0	0	2
	140017	SHOWA UNIV. FUJIGAOKA HOSP.	24	0	10	0	0	7	1	1	5
○	140020	KITASATO UNIV.	44	0	21	2	0	20	0	0	1
○	140029	YOKOHAMA CITY UNIV.	22	0	6	2	0	13	0	0	1
○	140030	YOKOHAMA MINAMI KYOSAI HOSP.	15	0	4	2	0	6	0	0	3
○	140035	YOKOHAMA MUNI. CITIZENS HOSP.	16	0	9	0	0	5	0	1	1
	140037	ST. MARIANNA UNIV. YOKOHAMA CITY SEIBU HOSP.	8	5	0	0	0	2	0	0	1
○	140044	SHONAN KAMAKURA GENERAL HOSP.	10	0	2	4	0	2	0	1	1
○	140054	ISEHARA KYODO HOSP.	1	0	1	0	0	0	0	0	0
○	140055	TOKAI UNIV.	29	0	14	3	0	6	0	2	4
○	140059	KANAGAWA CANCER CENTER	34	0	16	3	0	14	0	0	1
○	140061	YOKOHAMA CITY UNIV. MED. CENTER	12	0	9	1	0	1	0	0	1
○	150006	UNIV. OF YAMANASHI	15	0	8	1	0	3	1	0	2
	160001	NAGANO RED CROSS HOSP.	12	0	4	2	0	2	0	0	4
○	160022	NAGANO MUNI. HOSP.	12	0	11	0	0	1	0	0	0
○	170006	FUJI CITY GENERAL HOSP.	4	0	3	0	0	1	0	0	0
○	170009	SHIZUOKA GENERAL HOSP.	18	0	11	0	0	5	0	0	2
	180001	NAGAOKA RED CROSS HOSP.	20	8	8	2	0	2	0	0	0
○	180010	NIIGATA CANCER CENTER HOSP.	24	0	15	0	0	9	0	0	0
○	190001	TOYAMA UNIV.	7	0	4	2	0	1	0	0	0
○	190002	TOYAMA RED CROSS HOSP.	4	0	4	0	0	0	0	0	0
	190009	TAKAOKA CITY HOSP.	2	2	0	0	0	0	0	0	0
○	200001	KANAZAWA MED. UNIV.	9	0	3	0	0	5	0	0	1
	200002	KANAZAWA MED. CENTER	2	1	0	0	0	1	0	0	0
○	200004	KANAZAWA UNIV.	17	0	8	1	0	8	0	0	0
	210002	FUKUI PREF. HOSP.	11	11	0	0	0	0	0	0	0
○	210003	FUKUI UNIV.	9	0	6	0	0	1	0	0	1
	210004	FUKUI RED CROSS HOSP.	7	2	0	0	0	2	0	0	1
○	220002	GIFU UNIV.	18	0	9	0	0	7	0	0	2
	220006	OGAKI MUNI. HOSP.	10	10	0	0	0	0	0	0	0
	230001	TOYOHASHI MUNI. HOSP.	21	21	0	0	0	0	0	0	0
○	230014	RED CROSS NAGOYA DAIICHI HOSP.	19	0	11	3	0	5	0	0	0
	230031	NAGOYA UNIV.	12	12	0	0	0	0	0	0	0
○	230034	NAGOYA CITY UNIV.	7	0	5	1	0	1	0	0	0
○	230035	FUJITA HEALTH UNIV.	12	0	4	4	0	4	0	0	0
○	230040	AICHI MED. UNIV.	17	0	9	0	0	5	0	0	3

	A	B	C	D	E	F	G	H	I	J	K
	Institution	Total No. Treated	no description	Alive with no Evidence of the Disease	Alive with Carcinoma	Alive with or without Carcinoma Unknown	Died of Carcinoma	Died of Other Malignant Tumor	Died of Intercurrent Disease	Cause of Death Unknown	Lost to follow-up
○	230052	AICHI CANCER CENTER	40	0	19	5	0	15	1	0	0
○	240002	MIE PREF. GENERAL MED. CENTER	6	0	1	1	0	3	0	0	0
	240003	YOKKAICHI MUNI. HOSP	11	0	5	1	0	2	0	0	3
○	240009	MIE UNIV.	22	0	14	1	0	7	0	0	0
○	240015	ISE RED CROSS HOSP.	10	0	7	1	0	2	0	0	0
○	250001	OHTSU RED CROSS HOSP.	11	0	5	0	0	5	0	0	1
○	250003	SHIGA UNIV. OF MED. SCIENCE	15	0	8	0	0	3	0	2	2
○	250006	OMIHACHIMAN COMMUNITY MED. CENTER	4	0	3	0	0	1	0	0	0
○	250008	SHIGA MED. CENTER FOR ADULTS	3	0	1	0	0	2	0	0	0
○	260002	KYOTO 2ND RED CROSS HOSP.	17	0	12	0	0	5	0	0	0
○	260003	KYOTO PREF. UNIV. OF MED.	18	0	7	3	0	5	0	0	3
	260007	KYOTO 1ST RED CROSS HOSP.	17	0	7	2	0	4	0	0	4
○	260013	KYOTO KATSURA HOSP.	2	0	1	1	0	0	0	0	0
	260017	SAISEIKAI KYOTO HOSP.	2	2	0	0	0	0	0	0	0
	270003	KITANO HOSP.	28	3	15	1	0	6	0	0	3
	270007	OSAKA CITY GENERAL HOSP.	28	0	10	4	0	8	0	0	6
○	270009	OSAKA NATIONAL HOSP.	16	0	7	0	0	6	0	0	3
	270013	OSAKA POLICE HOSP.	15	0	3	1	0	4	0	0	7
	270018	NISSAY HOSP.	4	4	0	0	0	0	0	0	0
	270032	SAISEIKAI SUITA HOSP.	8	8	0	0	0	0	0	0	0
○	270035	OSAKA UNIV.	46	0	26	3	0	7	1	0	9
	270041	OSAKA MED. COLL.	30	0	11	0	0	12	0	0	7
○	270042	KANSAI MED. UNIV.	11	0	6	1	0	3	0	0	1
	270056	KINKI UNIV.	29	9	13	1	0	1	3	0	2
	270060	SAKAI CITY HOSP.	6	6	0	0	0	0	0	0	0
○	270062	OSAKA ROSAI HOSP.	22	0	10	2	0	6	0	0	4
○	270101	<small>OSAKA MED. CENTER FOR CANCER AND CARDIOVASCULAR DISEASES</small>	23	0	10	4	0	8	0	0	1
○	280002	KOBE CITY MED. CENTER GENERAL HOSP.	18	0	6	1	0	9	0	0	2
	280010	KOBE MED. CENTER	3	1	1	0	0	1	0	0	0
○	280015	KANSAI ROSAI HOSP.	15	0	9	1	0	3	0	0	2
	280021	HYOGO MED. COLL.	17	17	0	0	0	0	0	0	0
○	280028	TOYOOKA PUBLIC HOSP.	7	0	4	1	0	1	1	0	0
○	280030	HIMEJI RED CROSS HOSP.	16	0	6	2	0	6	0	1	1
	280031	HIMEJI MED. CENTER	3	3	0	0	0	0	0	0	0
○	280033	HYOGO CANCER CENTER	37	0	19	2	0	16	0	0	0
○	290003	NARA PREF. NARA HOSP.	9	0	2	0	0	7	0	0	0
○	290004	TENRI HOSP.	23	0	14	5	0	4	0	0	0
○	290007	NARA MED. UNIV.	17	1	9	0	0	6	0	1	0
	290009	NARA PREF. WESTERN MED. CENTER	5	5	0	0	0	0	0	0	0
○	290019	YAMATO TAKADA MUNI. HOSP.	6	0	4	0	0	2	0	0	0
○	300002	JAPANESE RED CROSS WAKAYAMA MED. CENTER	22	0	9	3	0	6	2	1	1
	300003	WAKAYAMA MED. UNIV.	19	17	0	0	0	1	0	0	1
○	310001	TOTTORI PREF. CENTRAL HOSP.	8	0	4	0	0	4	0	0	0
○	310007	TOTTORI UNIV.	19	0	11	1	0	7	0	0	0
	320003	SHIMANE UNIV.	10	4	0	0	0	3	1	0	2
	320004	SHIMANE PREF. CENTRAL HOSP.	10	6	0	0	0	2	0	1	1
○	330002	JAPANESE RED CROSS OKAYAMA HOSP.	10	0	6	1	0	2	0	0	1
○	330003	KAWASAKI HOSP.	4	0	2	1	0	1	0	0	0
○	330004	OKAYAMA SAISEIKAI GENERAL HOSP.	16	0	6	1	0	7	0	0	2
○	330006	OKAYAMA UNIV.	31	0	15	1	0	11	0	0	4
○	330008	KURASHIKI CENTRAL HOSP.	15	0	7	1	0	6	0	0	1
	330009	KAWASAKI MED. SCH.	5	5	0	0	0	0	0	0	0
○	330010	KURASHIKI MED. CENTER	18	0	13	3	0	2	0	0	0
○	340001	FUKUYAMA MED. CENTER	14	1	5	1	0	7	0	0	0
	340007	HIROSHIMA CITY HOSP.	24	0	8	3	0	7	0	0	6
○	340010	HIROSHIMA CITY ASA HOSP.	11	0	3	2	0	5	0	0	1
○	340012	HIROSHIMA UNIV.	10	0	6	1	0	3	0	0	0
○	340014	HIROSHIMA PREF. HOSP.	10	0	8	0	0	1	0	1	0
○	340015	KURE MED. CENTER	10	0	9	0	0	1	0	0	0

	A	B	C	D	E	F	G	H	I	J	K
	Institution	Total No. Treated	no description	Alive with no Evidence of the Disease	Alive with Carcinoma	Alive with or without Carcinoma Unknown	Died of Carcinoma	Died of Other Malignant Tumor	Died of Intercurrent Disease	Cause of Death Unknown	Lost to follow-up
	340018 HIROSHIMA GENERAL HOSP.	6	0	2	0	0	2	0	0	0	2
	350003 TOKUYAMA CENTRAL HOSP.	19	19	0	0	0	0	0	0	0	0
○	350008 YAMAGUCHI RED CROSS HOSP.	10	0	4	0	0	5	0	0	0	1
○	350009 YAMAGUCHI UNIV.	10	0	7	0	0	3	0	0	0	0
	360002 TOKUSHIMA MUNI. HOSP.	4	0	0	1	0	1	0	0	0	2
○	360003 TOKUSHIMA UNIV.	14	0	10	0	0	1	0	0	1	2
○	360005 TOKUSHIMA PREF. CENTRAL HOSP.	13	0	6	1	0	3	0	1	0	2
○	370001 TAKAMATSU RED CROSS HOSP.	11	0	7	0	0	4	0	0	0	0
○	370002 TAKAMATSU MUNI. HOSP.	2	0	1	0	0	1	0	0	0	0
○	370003 KAGAWA PREF. CENTRAL HOSP.	13	0	9	2	0	0	0	1	0	1
○	380001 SHIKOKU CANCER CENTER	33	0	18	4	0	11	0	0	0	0
	380005 MATSUYAMA RED CROSS HOSP.	5	5	0	0	0	0	0	0	0	0
○	380006 EHIME UNIV.	11	0	8	1	0	1	0	0	0	1
○	390003 KOCHI HEALTH SCIENCES CENTER	9	0	4	1	0	3	0	1	0	0
	390006 KOCHI UNIV.	9	0	4	2	0	1	0	0	0	2
	400003 KOKURA MED. CENTER	10	10	0	0	0	0	0	0	0	0
○	400008 <small>UNIV. OF OCCUPATIONAL AND ENVIRONMENTAL HEALTH</small>	23	0	13	1	0	7	0	0	0	2
○	400010 KYUSHU MED. CENTER	11	0	6	0	0	4	0	0	0	1
○	400012 KYUSHU UNIV.	29	0	17	3	0	8	1	0	0	0
○	400014 FUKUOKA RED CROSS HOSP.	10	0	5	0	0	5	0	0	0	0
○	400020 KURUME UNIV.	21	0	12	2	0	7	0	0	0	0
○	400026 SAISEIKAI FUKUOKA GENERAL HOSP.	15	0	8	0	0	5	0	0	0	2
○	400040 KYUSHU CANCER CENTER	25	0	16	3	0	6	0	0	0	0
○	410005 SAGA UNIV.	18	0	11	2	0	4	0	0	0	1
○	420001 NAGASAKI HARBOR MED. CENTER CITY HOSP.	12	0	9	1	0	2	0	0	0	0
○	420002 NAGASAKI UNIV.	13	0	10	1	0	2	0	0	0	0
	420003 RED CROSS NAGASAKI ATOMIC BOMB HOSP.	9	7	0	0	0	0	0	0	0	2
	420006 SASEBO KYOSAI HOSP.	15	0	9	0	0	1	0	0	0	5
○	430001 KUMAMOTO MED. CENTER	21	0	11	2	0	5	1	0	0	2
○	430002 KUMAMOTO UNIV.	30	0	14	1	0	9	0	0	0	6
○	430003 KUMAMOTO CITY HOSP.	23	0	8	4	0	9	0	0	0	2
	440002 OITA PREF. HOSP.	18	0	7	3	0	4	0	0	0	4
○	440005 OITA UNIV.	10	0	2	2	0	4	0	0	0	2
○	450001 MIYAZAKI PREF. HOSP.	16	0	9	1	0	5	0	0	0	1
○	450005 MIYAZAKI UNIV.	6	0	6	0	0	0	0	0	0	0
	460001 KAGOSHIMA UNIV.	27	12	0	0	0	6	0	0	0	9
	460004 KAGOSHIMA CITY HOSP.	24	0	9	0	0	7	0	0	0	8
○	470008 RYUKYU UNIV.	15	0	9	0	0	5	0	0	0	1
○	470010 OKINAWA PREF. CHUBU HOSP.	8	0	4	0	0	4	0	0	0	0
	Total	3,393	500	1,458	209	0	882	25	28	6	285

Table 1. No. of Patients by Stage and Age

FIGO Stage		Age		~19		20~29		30~39		40~49		50~59		60~69		70~79		80~		Total	
		No.	%	No.	%	No.	%	No.	%	No.	%	No.	%	No.	%	No.	%	No.	%	No.	%
I	A	10	0.4	17	0.7	51	2.2	67	2.8	120	5.1	62	2.6	30	1.3	3	0.1	360	15.2		
	B	0	0.0	0	0.0	2	0.1	1	0.0	7	0.3	6	0.3	0	0.0	1	0.0	17	0.7		
	C(b)	2	0.1	7	0.3	39	1.6	74	3.1	125	5.3	64	2.7	22	0.9	7	0.3	340	14.4		
	C(1)	1	0.0	1	0.0	2	0.1	7	0.3	10	0.4	10	0.4	0	0.0	0	0.0	31	1.3		
	C(2)	2	0.1	2	0.1	3	0.1	22	0.9	35	1.5	17	0.7	6	0.3	2	0.1	89	3.8		
	C(a)	2	0.1	7	0.3	17	0.7	39	1.6	44	1.9	24	1.0	9	0.4	2	0.1	144	6.1		
	total	17	0.7	34	1.4	114	4.8	210	8.9	341	14.4	183	7.7	67	2.8	15	0.6	981	41.4		
II	A	0	0.0	0	0.0	1	0.0	5	0.2	6	0.3	5	0.2	2	0.1	0	0.0	19	0.8		
	B	0	0.0	0	0.0	0	0.0	2	0.1	12	0.5	9	0.4	5	0.2	0	0.0	28	1.2		
	C(b)	0	0.0	2	0.1	5	0.2	9	0.4	28	1.2	6	0.3	7	0.3	4	0.2	61	2.6		
	C(1)	0	0.0	0	0.0	0	0.0	1	0.0	1	0.0	1	0.0	2	0.1	1	0.0	6	0.3		
	C(2)	0	0.0	1	0.0	3	0.1	8	0.3	22	0.9	15	0.6	4	0.2	0	0.0	53	2.2		
	C(a)	1	0.0	2	0.1	5	0.2	10	0.4	23	1.0	13	0.5	10	0.4	3	0.1	67	2.8		
	total	1	0.0	5	0.2	14	0.6	35	1.5	92	3.9	49	2.1	30	1.3	8	0.3	234	9.9		
III	A	0	0.0	0	0.0	3	0.1	6	0.3	12	0.5	7	0.3	3	0.1	0	0.0	31	1.3		
	B	0	0.0	1	0.0	4	0.2	9	0.4	23	1.0	29	1.2	14	0.6	1	0.0	81	3.4		
	C	5	0.2	5	0.2	27	1.1	89	3.8	200	8.4	177	7.5	89	3.8	20	0.8	612	25.9		
	total	5	0.2	6	0.3	34	1.4	104	4.4	235	9.9	213	9.0	106	4.5	21	0.9	724	30.6		
IV	0	0.0	2	0.1	13	0.5	36	1.5	64	2.7	48	2.0	34	1.4	6	0.3	203	8.6			
Neoadjuvant Chemotherapy	1	0.0	0	0.0	6	0.3	27	1.1	59	2.5	68	2.9	46	1.9	5	0.2	212	9.0			
Unknown	0	0.0	1	0.0	1	0.0	1	0.0	4	0.2	1	0.0	3	0.1	2	0.1	13	0.5			
Total	24	1.0	48	2.0	182	7.7	413	17.4	795	33.6	562	23.7	286	12.1	57	2.4	2,367				

Table 2. No. of Patients by Histological Type

Histological Type		Surface Epithelial/Stromal Tumors																					
		Serous		Mucinous		Endometrioid		Clear		Undifferentiated		Mixed		Others									
		No.	%	No.	%	No.	%	No.	%	No.	%	No.	%	Adenosarcoma (Homologous)		Adenosarcoma (Heterologous)		Mesodermal mixed (Homologous)		Mesodermal mixed (Heterologous)			
FIGO Stage		No.	%	No.	%	No.	%	No.	%	No.	%	No.	%	No.	%	No.	%	No.	%	No.	%	No.	%
I	A	34	1.4	87	3.7	74	3.1	113	4.8	0	0.0	7	0.3	0	0.0	0	0.0	0	0.0	0	0.0	0	0.0
	B	10	0.4	0	0.0	5	0.2	1	0.0	0	0.0	0	0.0	0	0.0	0	0.0	0	0.0	0	0.0	0	0.0
	C(b)	29	1.2	43	1.8	74	3.1	166	7.0	1	0.0	7	0.3	0	0.0	1	0.0	3	0.1	0	0.0		
	C(1)	6	0.3	8	0.3	4	0.2	12	0.5	0	0.0	0	0.0	0	0.0	0	0.0	0	0.0	0	0.0		
	C(2)	22	0.9	12	0.5	15	0.6	35	1.5	1	0.0	1	0.0	0	0.0	0	0.0	0	0.0	0	0.0		
	C(a)	20	0.8	26	1.1	41	1.7	42	1.8	2	0.1	2	0.1	2	0.1	2	0.1	0	0.0	0	0.0		
	total	121	5.1	176	7.4	213	9.0	369	15.6	4	0.2	17	0.7	2	0.1	1	0.0	3	0.1	0	0.0		
II	A	7	0.3	3	0.1	2	0.1	6	0.3	0	0.0	0	0.0	0	0.0	0	0.0	0	0.0	0	0.0	0	0.0
	B	4	0.2	0	0.0	6	0.3	9	0.4	0	0.0	1	0.0	1	0.0	0	0.0	0	0.0	0	0.0		
	C(b)	10	0.4	8	0.3	19	0.8	18	0.8	0	0.0	1	0.0	0	0.0	0	0.0	0	0.0	0	0.0		
	C(1)	1	0.0	0	0.0	3	0.1	1	0.0	0	0.0	1	0.0	0	0.0	0	0.0	0	0.0	0	0.0		
	C(2)	13	0.5	4	0.2	18	0.8	12	0.5	2	0.1	1	0.0	0	0.0	0	0.0	2	0.1	0	0.0		
	C(a)	20	0.8	6	0.3	19	0.8	13	0.5	2	0.1	2	0.1	0	0.0	0	0.0	0	0.0	1	0.0		
	total	55	2.3	21	0.9	67	2.8	59	2.5	4	0.2	6	0.3	1	0.0	0	0.0	2	0.1	1	0.0		
III	A	11	0.5	2	0.1	6	0.3	8	0.3	1	0.0	0	0.0	0	0.0	0	0.0	0	0.0	0	0.0		
	B	23	1.0	10	0.4	14	0.6	15	0.6	2	0.1	4	0.2	3	0.1	1	0.0	0	0.0	0	0.0		
	C	344	14.5	32	1.4	56	2.4	88	3.7	18	0.8	13	0.5	1	0.0	1	0.0	4	0.2	4	0.2		
	total	378	16.0	44	1.9	76	3.2	111	4.7	21	0.9	17	0.7	4	0.2	2	0.1	4	0.2	4	0.2		
IV	111	4.7	14	0.6	25	1.1	17	0.7	4	0.2	4	0.2	0	0.0	1	0.0	0	0.0	0	0.0			
Neoadjuvant Chemotherapy	140	5.9	2	0.1	18	0.8	14	0.6	6	0.3	5	0.2	0	0.0	1	0.0	1	0.0	2	0.1			
Unknown	2	0.1	2	0.1	1	0.0	3	0.1	0	0.0	1	0.0	0	0.0	0	0.0	0	0.0	0	0.0			
Total	807	34.1	259	10.9	400	16.9	573	24.2	39	1.6	50	2.1	7	0.3	5	0.2	10	0.4	7	0.3			

Histological Type		Surface Epithelial/Stromal Tumors										Sex Cord/Stromal Tumor				Germ cell					
		Stromal Sarcoma		Brenner		Transitional Cell		Unclassified		Other		Srtoli-stromal (poor)		Others		Immature teratoma (G3)		Dysgerminoma			
		No.	%	No.	%	No.	%	No.	%	No.	%	No.	%	No.	%	No.	%	No.	%		
FIGO Stage		No.	%	No.	%	No.	%	No.	%	No.	%	No.	%	No.	%	No.	%	No.	%	No.	%
I	A	0	0.0	3	0.1	2	0.1	0	0.0	1	0.0	2	0.1	0	0.0	0	0.0	5	0.2	6	0.3
	B	0	0.0	0	0.0	0	0.0	0	0.0	0	0.0	0	0.0	0	0.0	0	0.0	0	0.0	0	0.0
	C(b)	0	0.0	1	0.0	0	0.0	0	0.0	1	0.0	1	0.0	0	0.0	0	0.0	2	0.1	0	0.0
	C(1)	0	0.0	0	0.0	0	0.0	0	0.0	0	0.0	0	0.0	0	0.0	0	0.0	0	0.0	1	0.0
	C(2)	0	0.0	0	0.0	1	0.0	0	0.0	0	0.0	0	0.0	0	0.0	0	0.0	0	0.0	0	0.0
	C(a)	0	0.0	1	0.0	0	0.0	0	0.0	0	0.0	0	0.0	0	0.0	0	0.0	0	0.0	2	0.1
	total	0	0.0	5	0.2	3	0.1	0	0.0	2	0.1	3	0.1	0	0.0	0	0.0	7	0.3	9	0.4
II	A	0	0.0	0	0.0	0	0.0	0	0.0	1	0.0	0	0.0	0	0.0	0	0.0	0	0.0	0	0.0
	B	0	0.0	0	0.0	1	0.0	1	0.0	0	0.0	1	0.0	0	0.0	0	0.0	0	0.0	0	0.0
	C(b)	0	0.0	0	0.0	0	0.0	0	0.0	0	0.0	0	0.0	0	0.0	0	0.0	1	0.0	0	0.0
	C(1)	0	0.0	0	0.0	0	0.0	0	0.0	0	0.0	0	0.0	0	0.0	0	0.0	0	0.0	0	0.0
	C(2)	0	0.0	0	0.0	0	0.0	0	0.0	0	0.0	0	0.0	0	0.0	0	0.0	1	0.0	0	0.0
	C(a)	0	0.0	0	0.0	1	0.0	1	0.0	0	0.0	0	0.0	0	0.0	0	0.0	2	0.1	0	0.0
total	0	0.0	0	0.0	2	0.1	2	0.1	1	0.0	1	0.0	0	0.0	0	0.0	4	0.2	0	0.0	
III	A	1	0.0	0	0.0	0	0.0	0	0.0	0	0.0	0	0.0	0	0.0	0	0.0	0	0.0	0	0.0
	B	0	0.0	0	0.0	0	0.0	1	0.0	1	0.0	0	0.0	1	0.0	0	0.0	0	0.0	0	0.0
	C	0	0.0	4	0.2	4	0.2	9	0.4	7	0.3	0	0.0	0	0.0	0	0.0	1	0.0	0	0.0
total	1	0.0	4	0.2	4	0.2	10	0.4	8	0.3	0	0.0	1	0.0	0	0.0	1	0.0	0	0.0	
IV	0	0.0	1	0.0	2	0.1	7	0.3	6	0.3	0	0.0	0	0.0	0	0.0	0	0.0	0	0.0	
Neoadjuvant Chemotherapy	0	0.0	0	0.0	1	0.0	9	0.4	8	0.3	0	0.0	0	0.0	0	0.0	0	0.0	0	0.0	
Unknown	0	0.0	0	0.0	0	0.0	0	0.0	3	0.1	0	0.0	0	0.0	0	0.0	0	0.0	0	0.0	
Total	1	0	10	0.4	12	0.5	28	1.2	28	1.2	4	0.2	1	0	0	0	12	0.5	9	0.4	

Table 3. 5-Year Results, Treatment Started in 2007

5-year result	No. of patients	%
Alive with no evidence of the disease	1,255	53.0
Alive with carcinoma	174	7.4
Alive with or without carcinoma unknown	0	0.0
Died of carcinoma	746	31.5
Died of other malignant tumor	20	0.8
Died of intercurrent disease	25	1.1
Cause of death unknown	4	0.2
Lost to follow-up	143	6.0
Total	2,367	

Table 4. 5-Year Survival by Stage, Treatment Started in 2007

FIGO Stage		Patients treated		5-year survival		Lost to follow-up
		No.		%		
I	A	360	981	94.7	91.5	49/981 (5.0%)
	B	17		93.8		
	C(b)	340		92.6		
	C(1)	31		93.3		
	C(2)	89		81.9		
	C(a)	144		86.1		
II	A	19	234	78.0	76.1	12/234 (5.1%)
	B	28		71.1		
	C(b)	61		73.0		
	C(1)	6		100.0		
	C(2)	53		76.6		
	C(a)	67		77.9		
III	A	31	724	73.6	46.9	49/724 (6.8%)
	B	81		54.4		
	C	612		44.5		
IV		203		31.3		12/203 (5.9%)
Neoadjuvant Chemotherapy		212		39.5		16/212 (7.5%)
Unknown		13		48.5		5/13 (38.5%)
Total		2,367				

**Table 5. 5-Year Survival by Stage, Treatment Started in 2007
(Surface Epithelial-Stromal Tumors)**

FIGO Stage		Patients treated		5-year survival		Lost to follow-up
		No.		%		
I	A	321	916	94.7	91.3	45/916 (4.9%)
	B	16		93.3		
	C(b)	326		92.6		
	C(1)	30		93.1		
	C(2)	87		81.6		
	C(a)	136		86.0		
II	A	19	221	78.0	76.5	12/221 (5.4%)
	B	23		77.8		
	C(b)	56		72.3		
	C(1)	6		100.0		
	C(2)	52		76.1		
	C(a)	65		77.2		
III	A	29	688	75.2	46.8	46/688 (6.7%)
	B	74		51.8		
	C	585		44.7		
IV		192		31.9		11/192 (5.7%)
Neoadjuvant Chemotherapy		207		39.5		16/207 (7.7%)
Unknown		12		46.7		4/12 (33.3%)
Total		2,236				

Table 6. 5-Year Survival by Histological type, Treatment Started in 2007

Histological Type	FIGO Stage	Patients treated	5-year survival	Lost to follow-up
		No.	%	
Sex Cord/Stromal Tumors	I	3	100.0	0/3 (0.0%)
	II	1	100.0	0/1 (0.0%)
	III	1	100.0	0/1 (0.0%)
	IV	0	—	—
	Neoadjuvant Chemotherapy	0	—	—
Germ Cell Tumors	I	57	92.9	3/57 (5.3%)
	II	10	70.0	0/10 (0.0%)
	III	22	47.8	1/22 (4.5%)
	IV	7	40.0	1/7 (14.3%)
	Neoadjuvant Chemotherapy	3	66.7	0/3 (0.0%)

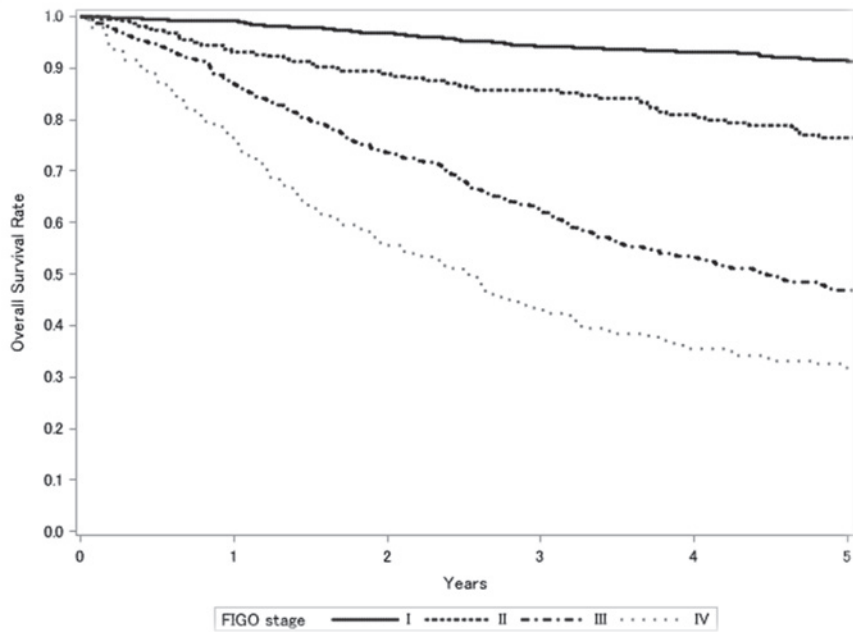
**Table 7. 5-Year Survival by Stage and Histological Type, Treatment Started in 2007
(Surface Epithelial-Stromal Tumors)**

FIGO Stage	Histology Type	Patients treated	5-year survival	Lost to follow-up
		No.	%	
I	Serous	121	93.0	4/121 (3.3%)
	Mucinous	176	93.2	11/176 (6.3%)
	Endometrioid	213	94.1	11/213 (5.2%)
	Clear	369	89.2	18/369 (4.9%)
	Other	37	82.8	1/37 (2.7%)
II	Serous	55	79.8	4/55 (7.3%)
	Mucinous	21	69.3	2/21 (9.5%)
	Endometrioid	67	83.5	0/67 (0.0%)
	Clear	59	68.4	5/59 (8.5%)
	Other	19	73.3	1/19 (5.3%)
III	Serous	378	49.8	20/378 (5.3%)
	Mucinous	44	26.6	4/44 (9.1%)
	Endometrioid	76	57.8	4/76 (5.3%)
	Clear	111	38.5	12/111 (10.8%)
	Other	79	43.9	6/79 (7.6%)
IV	Serous	111	34.5	7/111 (6.3%)
	Mucinous	14	42.9	1/14 (7.1%)
	Endometrioid	25	30.8	2/25 (8.0%)
	Clear	17	35.3	0/17 (0.0%)
	Other	25	12.5	1/25 (4.0%)
Neoadjuvant Chemotherapy	Serous	140	34.5	10/140 (7.1%)
	Mucinous	2	50.0	0/2 (0.0%)
	Endometrioid	18	43.2	0/18 (0.0%)
	Clear	14	68.4	2/14 (14.3%)
	Other	33	46.2	4/33 (12.1%)
Unknown	Serous	2	100.0	2/2 (100.0%)
	Mucinous	2	0.0	0/2 (0.0%)
	Endometrioid	1	100.0	0/1 (0.0%)
	Clear	3	66.7	0/3 (0.0%)
	Other	4	0.0	2/4 (50.0%)

**Table 8. 5-Year Survival by TNM Classification, Treatment Started in 2007
(Surface Epithelial-Stromal Tumors)**

TNM Stage			Patients treated		5-year survival	Lost to follow-up
			No.	%	%	
T1a	N0	M0	270	16.1	95.7	14/270 (5.2%)
T1b	N0	M0	11	0.7	100.0	0/11 (0.0%)
T1c	N0	M0	523	31.2	89.9	24/523 (4.6%)
T2a	N0	M0	15	0.9	72.2	1/15 (6.7%)
T2b	N0	M0	19	1.1	78.9	0/19 (0.0%)
T2c	N0	M0	143	8.5	81.1	8/143 (5.6%)
T3a	N0	M0	21	1.3	70.4	1/21 (4.8%)
T3b	N0	M0	44	2.6	62.2	2/44 (4.5%)
T3c	N0	M0	150	9.0	48.9	18/150 (12.0%)
T1a	N1	M0	8	0.5	85.7	0/8 (0.0%)
T1b	N1	M0	5	0.3	75.0	1/5 (20.0%)
T1c	N1	M0	31	1.9	79.6	2/31 (6.5%)
T2a	N1	M0	5	0.3	100.0	0/5 (0.0%)
T2b	N1	M0	2	0.1	100.0	0/2 (0.0%)
T2c	N1	M0	21	1.3	52.4	1/21 (4.8%)
T3a	N1	M0	1	0.1	100.0	0/1 (0.0%)
T3b	N1	M0	19	1.1	58.6	3/19 (15.8%)
T3c	N1	M0	173	10.3	45.7	11/173 (6.4%)
Any T	Any N	M1	213	12.7	33.1	13/213 (6.1%)

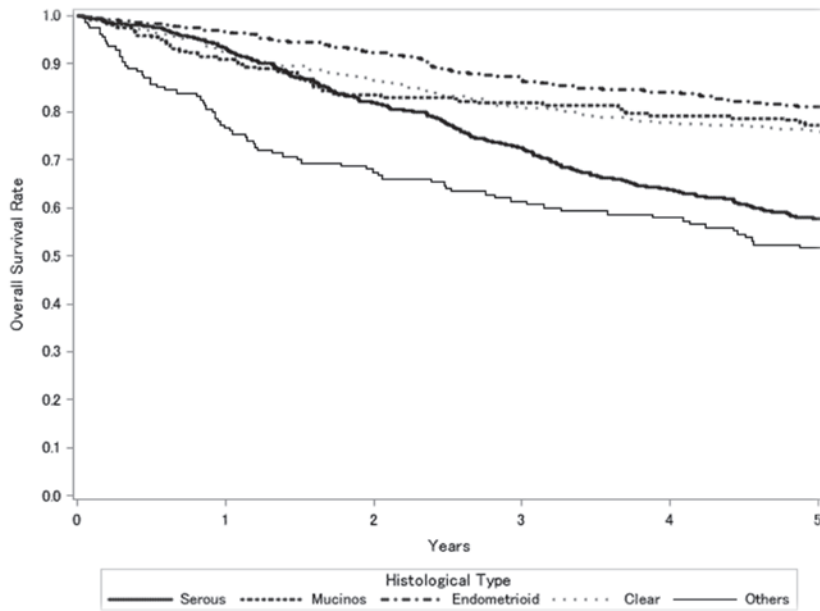
Figure 1.
Kaplan-Meier Estimated Overall Survival Curves of Ovarian Cancer Patients by FIGO Stage, Treatment Started in 2007 (Surface Epithelial-Stromal Tumors)



Test of Equality over Strata			
Test	Chi-Square	DF	Pr >Chi-Square
Log-rank	579.2603	3	<.0001
Wilcoxon	555.6288	3	<.0001
-2Log (LR)	563.7245	3	<.0001

Adjustment for Multiple Comparisons for the Log-rank Test				
Strata Comparison		Chi-Square	p-Values	
FIGO Stage	FIGO Stage		Raw	Tukey-Kramer
I	II	174.3000	<.0001	<.0001
I	III	392.3000	<.0001	<.0001
I	IV	489.5000	<.0001	<.0001
II	III	171.8000	<.0001	<.0001
II	IV	107.8000	<.0001	<.0001
III	IV	43.7080	<.0001	<.0001

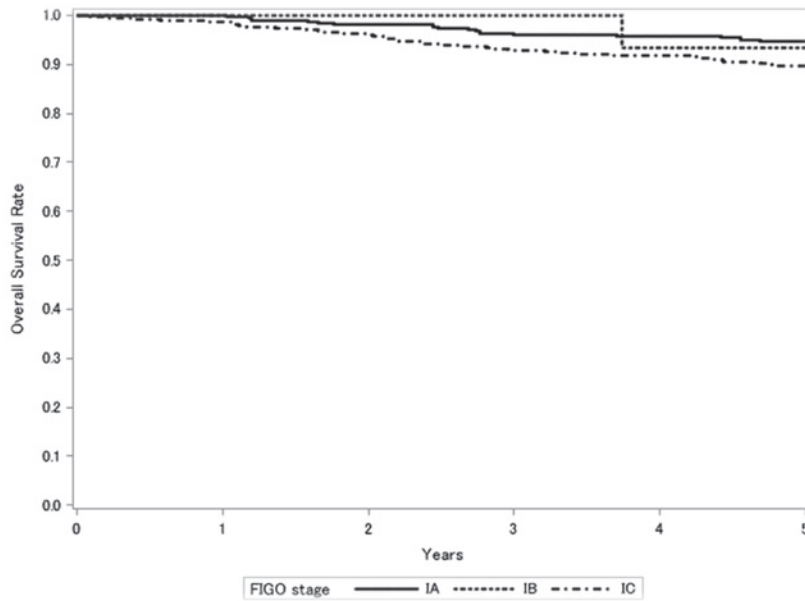
Figure 2.
Kaplan-Meier Estimated Overall Survival Curves of Ovarian Cancer Patients by
Histological Type, Treatment Started in 2007 (Surface Epithelial-Stromal Tumors)



Test of Equality over Strata			
Test	Chi-Square	DF	Pr >Chi-Square
Log-rank	115.4965	4	<.0001
Wilcoxon	105.5877	4	<.0001
-2Log (LR)	113.9922	4	<.0001

Adjustment for Multiple Comparisons for the Log-rank Test				
Strata Comparison		Chi-Square	p-Values	
Histological Type	Histological Type		Raw	Tukey-Kramer
Serous	Mucinous	48.2542	<.0001	<.0001
Serous	Endometrioid	64.9498	<.0001	<.0001
Serous	Clear	46.3670	<.0001	<.0001
Serous	Other	12.7514	0.0004	0.0033
Mucinous	Endometrioid	5.6157	0.0178	0.1236
Mucinous	Clear	1.8499	0.1738	0.6533
Mucinous	Other	30.9809	<.0001	<.0001
Endometrioid	Clear	0.5453	0.4602	0.9475
Endometrioid	Other	55.8011	<.0001	<.0001
Clear	Other	35.1327	<.0001	<.0001

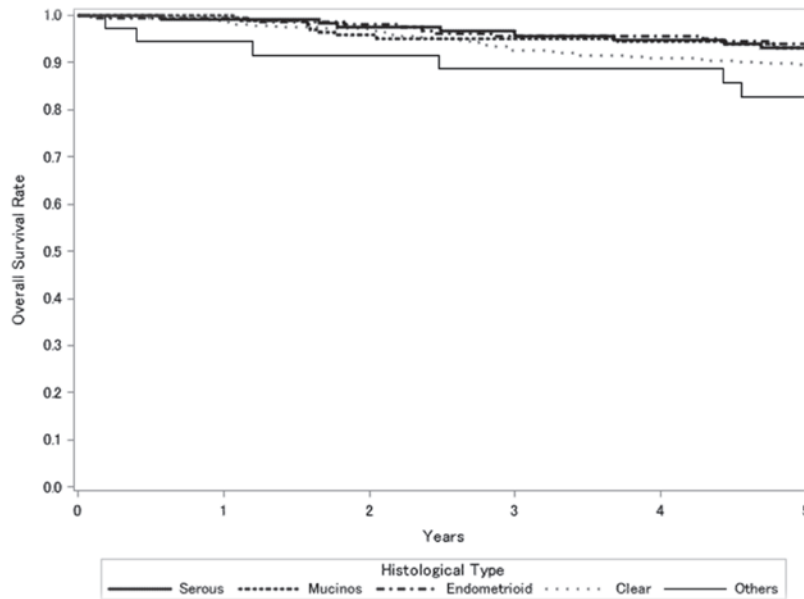
Figure 3.
Kaplan-Meier Estimated Overall Survival Curves of Ovarian Cancer Patients by
FIGO Stage I Substage, Treatment Started in 2007 (Surface Epithelial-Stromal Tumors)



Test of Equality over Strata			
Test	Chi-Square	DF	Pr > Chi-Square
Log-rank	8.0101	2	0.0182
Wilcoxon	6.6740	2	0.0355
-2Log (LR)	8.2671	2	0.0160

Adjustment for Multiple Comparisons for the Log-rank Test				
Strata Comparison		Chi-Square	p-Values	
FIGO Stage	FIGO Stage		Raw	Tukey-Kramer
IA	IB	7.9311	0.0049	0.0135
IA	IC	6.1301	0.0133	0.0355
IB	IC	3.0950	0.0785	0.1835

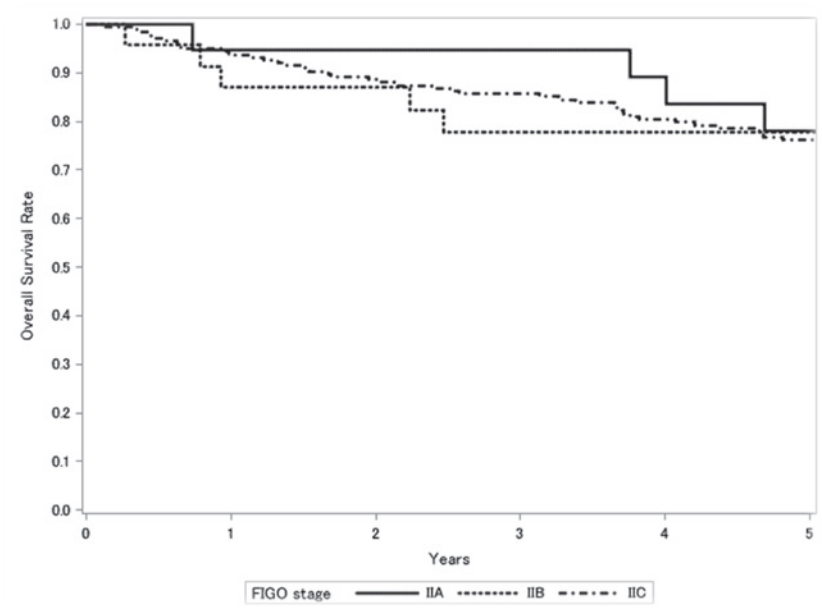
Figure 4.
Kaplan-Meier Estimated Overall Survival Curves of Stage I Ovarian Cancer Patients by
Histological Type, Treatment Started in 2007 (Surface Epithelial-Stromal Tumors)



Test of Equality over Strata			
Test	Chi-Square	DF	Pr > Chi-Square
Log-rank	5.9998	4	0.1992
Wilcoxon	7.2465	4	0.1234
-2Log (LR)	5.4653	4	0.2428

Adjustment for Multiple Comparisons for the Log-rank Test				
Strata Comparison		Chi-Square	p-Values	
Histological Type	Histological Type		Raw	Tukey-Kramer
Serous	Mucinous	0.1759	0.6749	0.9935
Serous	Endometrioid	0.6467	0.4213	0.9294
Serous	Clear	1.1995	0.2734	0.8091
Serous	Other	1.0876	0.2970	0.8354
Mucinous	Endometrioid	0.1454	0.7030	0.9955
Mucinous	Clear	1.7872	0.1813	0.6681
Mucinous	Other	2.1435	0.1432	0.5860
Endometrioid	Clear	2.4708	0.1160	0.5155
Endometrioid	Other	3.4733	0.0624	0.3371
Clear	Other	0.3451	0.5569	0.9770

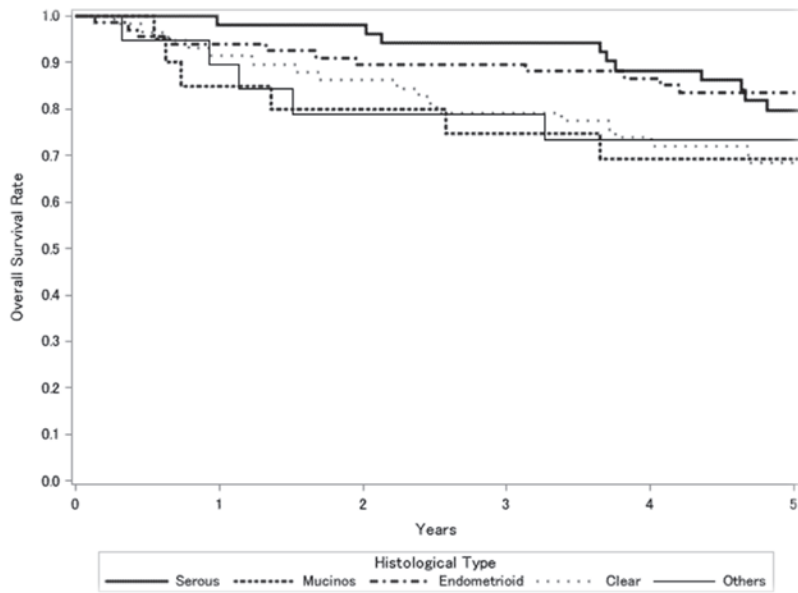
Figure 5.
Kaplan-Meier Estimated Overall Survival Curves of Ovarian Cancer Patients by
FIGO Stage II Substage, Treatment Started in 2007 (Surface Epithelial-Stromal Tumors)



Test of Equality over Strata			
Test	Chi-Square	DF	Pr > Chi-Square
Log-rank	0.1943	2	0.9074
Wilcoxon	0.2280	2	0.8922
-2Log (LR)	0.2042	2	0.9030

Adjustment for Multiple Comparisons for the Log-rank Test				
Strata Comparison		Chi-Square	p-Values	
FIGO Stage	FIGO Stage		Raw	Tukey-Kramer
IIA	IIB	0.0386	0.8442	0.9789
IIA	IIC	0.1907	0.6623	0.9002
IIB	IIC	0.0854	0.7701	0.9540

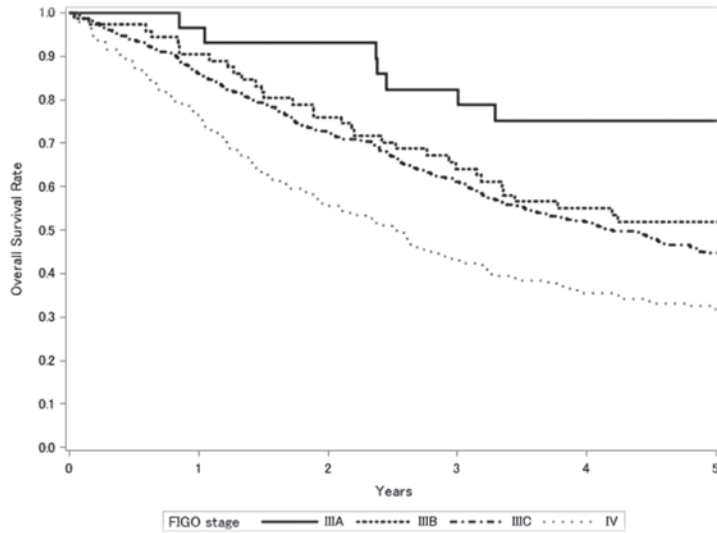
Figure 6.
Kaplan-Meier Estimated Overall Survival Curves of Stage II Ovarian Cancer Patients by
Histological Type, Treatment Started in 2007 (Surface Epithelial-Stromal Tumors)



Test of Equality over Strata			
Test	Chi-Square	DF	Pr > Chi-Square
Log-rank	7.6164	4	0.1067
Wilcoxon	6.7593	4	0.1492
-2Log (LR)	7.7277	4	0.1021

Adjustment for Multiple Comparisons for the Log-rank Test				
Strata Comparison		Chi-Square	p-Values	
Histological Type	Histological Type		Raw	Tukey-Kramer
Serous	Mucinous	1.8020	0.1795	0.6646
Serous	Endometrioid	0.1606	0.6886	0.9946
Serous	Clear	3.8403	0.0500	0.2860
Serous	Other	1.9220	0.1656	0.6365
Mucinous	Endometrioid	3.2042	0.0734	0.3793
Mucinous	Clear	1.4114	0.2348	0.7583
Mucinous	Other	0.0024	0.9608	1.0000
Endometrioid	Clear	5.1244	0.0236	0.1568
Endometrioid	Other	3.3646	0.0666	0.3537
Clear	Other	1.3443	0.2463	0.7745

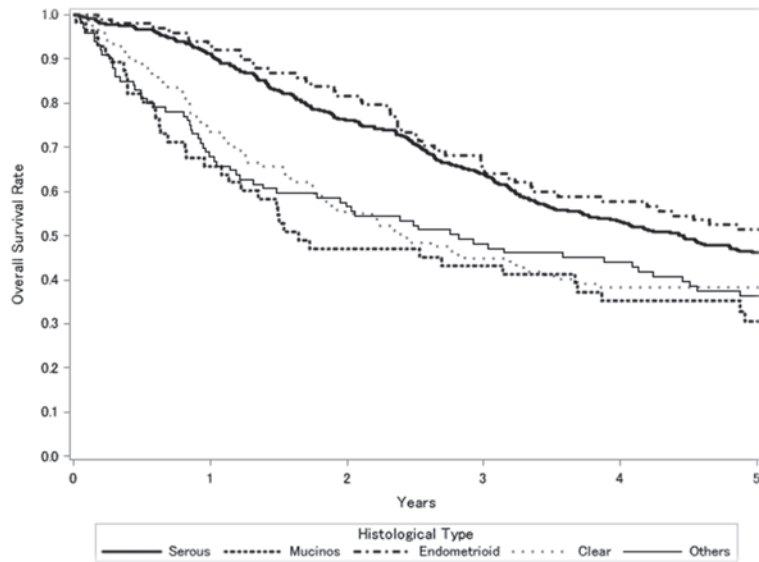
Figure 7.
Kaplan-Meier Estimated Overall Survival Curves of Ovarian Cancer Patients by
FIGO Stage III Substage, IV Stage, Treatment Started in 2007 (Surface Epithelial-Stromal Tumors)



Test of Equality over Strata			
Test	Chi-Square	DF	Pr >Chi-Square
Log-rank	29.6089	3	<.0001
Wilcoxon	33.2932	3	<.0001
-2Log (LR)	30.8778	3	<.0001

Adjustment for Multiple Comparisons for the Log-rank Test				
Strata Comparison		Chi-Square	p-Values	
FIGO Stage	FIGO Stage		Raw	Tukey-Kramer
IIIA	IIIB	0.4045	0.5248	0.9204
IIIA	IIIC	0.1609	0.6883	0.9782
IIIA	IV	28.9013	<.0001	<.0001
IIIB	IIIC	0.4964	0.4811	0.8953
IIIB	IV	18.4887	<.0001	0.0001
IIIC	IV	11.6325	0.0006	0.0036

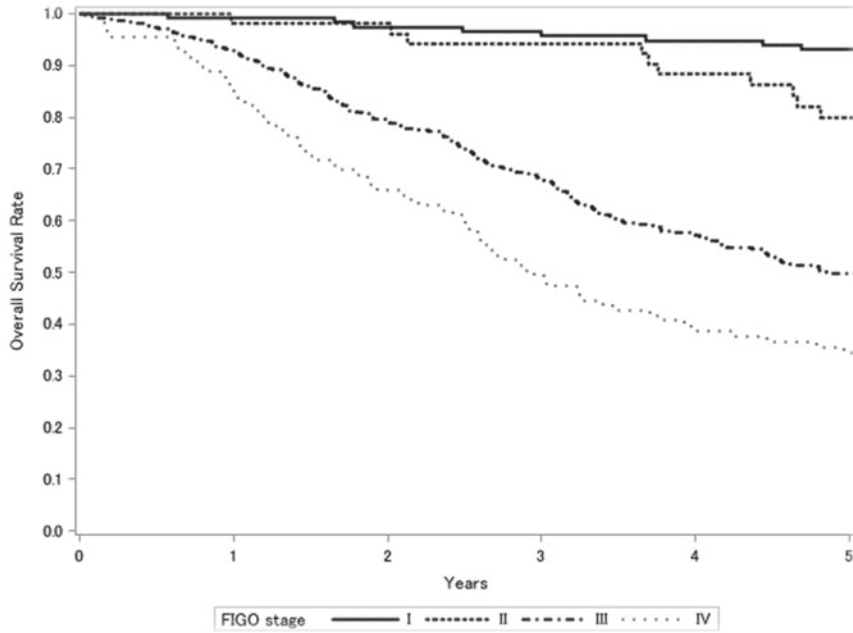
Figure 8.
Kaplan-Meier Estimated Overall Survival Curves of Stage III, IV Ovarian Cancer Patients by Histological Type, Treatment Started in 2007 (Surface Epithelial-Stromal Tumors)



Test of Equality over Strata			
Test	Chi-Square	DF	Pr > Chi-Square
Log-rank	26.6077	4	<.0001
Wilcoxon	44.8461	4	<.0001
-2Log (LR)	24.8095	4	<.0001

Adjustment for Multiple Comparisons for the Log-rank Test				
Strata Comparison		Chi-Square	p-Values	
Histological Type	Histological Type		Raw	Tukey-Kramer
Serous	Mucinous	12.2120	0.0005	0.0043
Serous	Endometrioid	0.9456	0.3308	0.8677
Serous	Clear	10.5796	0.0011	0.0101
Serous	Other	10.5785	0.0011	0.0101
Mucinous	Endometrioid	10.3894	0.0013	0.0111
Mucinous	Clear	0.2626	0.6084	0.9862
Mucinous	Other	0.1213	0.7277	0.9969
Endometrioid	Clear	9.6983	0.0018	0.0158
Endometrioid	Other	9.4203	0.0021	0.0183
Clear	Other	0.0238	0.8774	0.9999

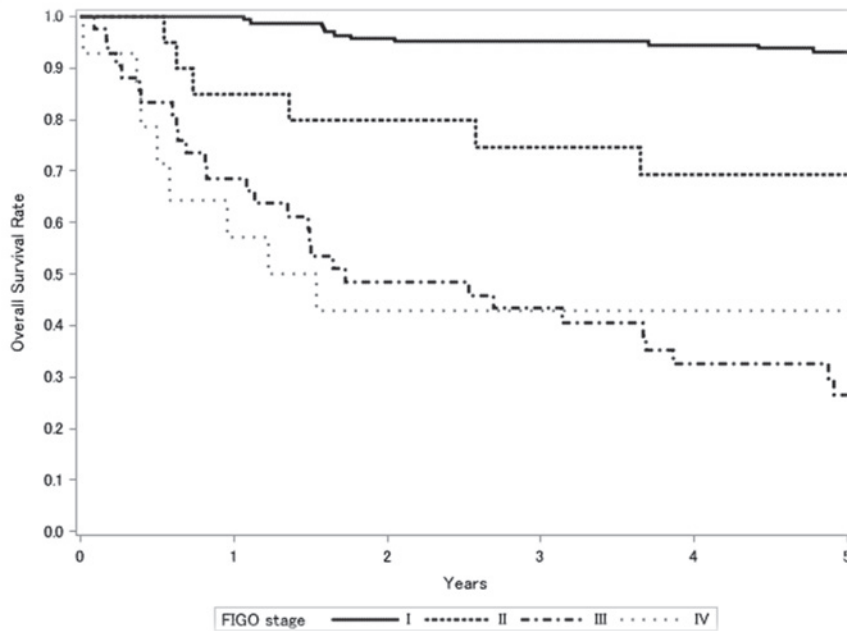
Figure 9.
Kaplan-Meier Estimated Overall Survival Curves of Ovarian Cancer Patients with Serous Adenocarcinoma by FIGO Stage, Treatment Started in 2007



Test of Equality over Strata			
Test	Chi-Square	DF	Pr >Chi-Square
Log-rank	108.5500	3	<.0001
Wilcoxon	105.6421	3	<.0001
-2Log (LR)	126.6833	3	<.0001

Adjustment for Multiple Comparisons for the Log-rank Test				
Strata Comparison		Chi-Square	p-Values	
FIGO Stage	FIGO Stage		Raw	Tukey-Kramer
I	II	15.9819	<.0001	0.0004
I	III	47.1990	<.0001	<.0001
I	IV	88.4197	<.0001	<.0001
II	III	25.8486	<.0001	<.0001
II	IV	47.6389	<.0001	<.0001
III	IV	0.0280	0.8671	0.9983

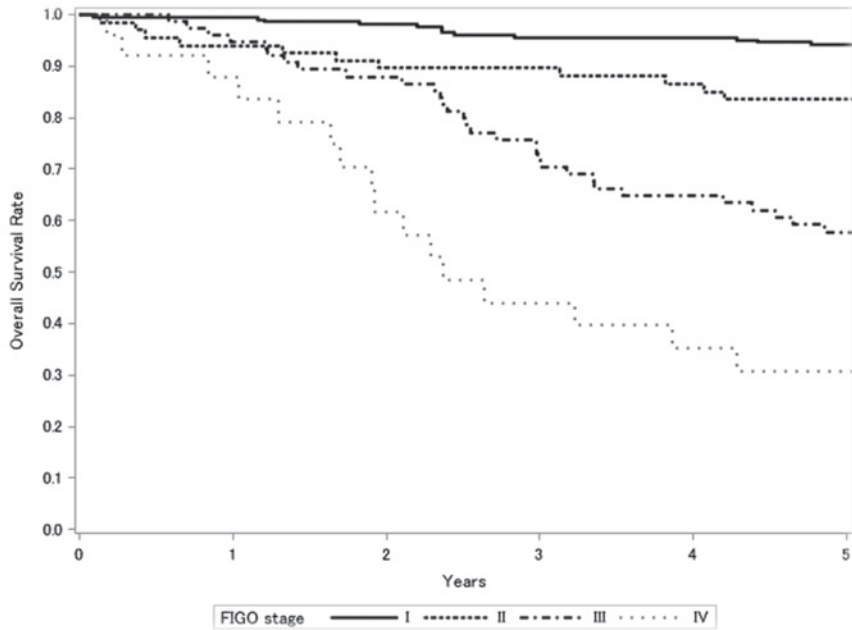
Figure 10.
Kaplan-Meier Estimated Overall Survival Curves of Ovarian Cancer Patients with Mucinous Adenocarcinoma by FIGO Stage, Treatment Started in 2007



Test of Equality over Strata			
Test	Chi-Square	DF	Pr >Chi-Square
Log-rank	120.8936	3	<.0001
Wilcoxon	120.1114	3	<.0001
-2Log (LR)	95.3602	3	<.0001

Adjustment for Multiple Comparisons for the Log-rank Test				
Strata Comparison		Chi-Square	p-Values	
FIGO Stage	FIGO Stage		Raw	Tukey-Kramer
I	II	49.9878	<.0001	<.0001
I	III	111.3000	<.0001	<.0001
I	IV	89.0478	<.0001	<.0001
II	III	41.1392	<.0001	<.0001
II	IV	2.9718	0.0847	0.3111
III	IV	34.1753	<.0001	<.0001

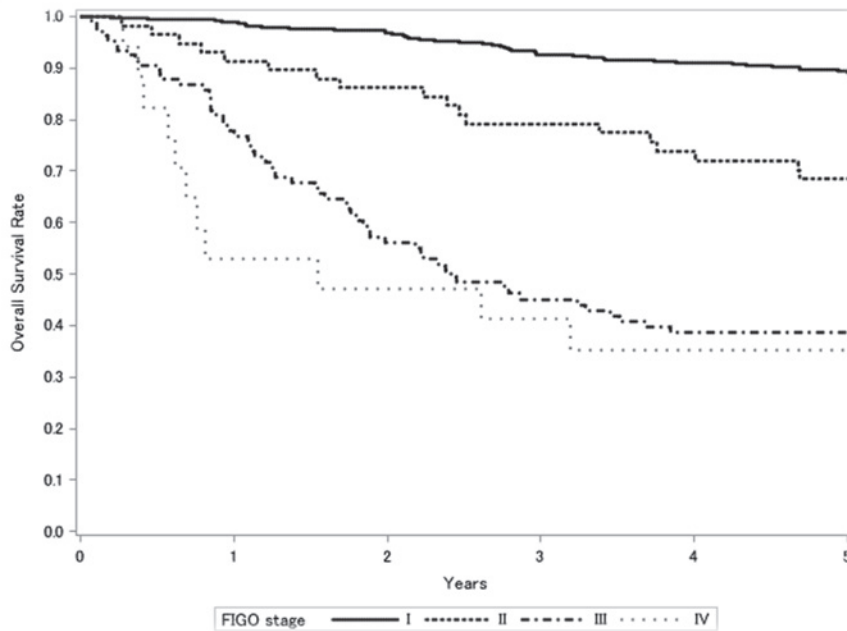
Figure 11.
Kaplan-Meier Estimated Overall Survival Curves of Ovarian Cancer Patients with Endometrioid Adenocarcinoma by FIGO Stage, Treatment Started in 2007



Test of Equality over Strata			
Test	Chi-Square	DF	Pr >Chi-Square
Log-rank	107.9366	3	<.0001
Wilcoxon	106.2573	3	<.0001
-2Log (LR)	78.0158	3	<.0001

Adjustment for Multiple Comparisons for the Log-rank Test				
Strata Comparison		Chi-Square	p-Values	
FIGO Stage	FIGO Stage		Raw	Tukey-Kramer
I	II	17.3146	<.0001	0.0002
I	III	56.6085	<.0001	<.0001
I	IV	77.8082	<.0001	<.0001
II	III	18.5401	<.0001	<.0001
II	IV	15.9800	<.0001	0.0004
III	IV	3.0929	0.0786	0.2935

Figure 12.
Kaplan-Meier Estimated Overall Survival Curves of Ovarian Cancer Patients with Clear Cell Adenocarcinoma by FIGO Stage, Treatment Started in 2007



Test of Equality over Strata			
Test	Chi-Square	DF	Pr >Chi-Square
Log-rank	192.2745	3	<.0001
Wilcoxon	191.2152	3	<.0001
-2Log (LR)	148.6536	3	<.0001

Adjustment for Multiple Comparisons for the Log-rank Test				
Strata Comparison		Chi-Square	p-Values	
FIGO Stage	FIGO Stage		Raw	Tukey-Kramer
I	II	73.7792	<.0001	<.0001
I	III	168.2000	<.0001	<.0001
I	IV	154.3000	<.0001	<.0001
II	III	48.4385	<.0001	<.0001
II	IV	0.8388	0.3597	0.7964
III	IV	68.8686	<.0001	<.0001

卵巢境界悪性腫瘍治療成績

Statement for the Year 2007, Inclusive, Borderline Ovarian Tumor

Table A. 5-Year Results, Stage I-IV

	A	B	C	D	E	F	G	H	I	J	K	
	Institution	Total No. Treated	no description	Alive with no Evidence of the Disease	Alive with Carcinoma	Alive with or without Carcinoma Unknown	Died of Carcinoma	Died of Other Malignant Tumor	Died of Intercurrent Disease	Cause of Death Unknown	Lost to follow-up	
○	010003	HOKKAIDO CANCER CENTER	11	0	11	0	0	0	0	0	0	
○	010025	SAPPORO MED. UNIV.	3	0	3	0	0	0	0	0	0	
○	010027	HOKKAIDO UNIV.	13	0	13	0	0	0	0	0	0	
○	010028	KKR SAPPORO MED. CENTER	10	0	8	0	0	0	0	1	1	
○	010040	ASAHIKAWA MED. COLL.	5	0	4	0	0	0	1	0	0	
○	020004	AOMORI PREF. CENTRAL HOSP.	3	3	0	0	0	0	0	0	0	
○	020012	HIROSAKI UNIV.	6	0	6	0	0	0	0	0	0	
○	040004	TOHOKU UNIV.	15	0	9	1	0	0	1	2	0	2
○	040013	SENDAI MED. CENTER	1	0	1	0	0	0	0	0	0	0
○	050001	AKITA RED CROSS HOSP.	1	0	1	0	0	0	0	0	0	0
○	050003	AKITA UNIV.	1	0	1	0	0	0	0	0	0	0
○	060002	YAMAGATA PREF. CENTRAL HOSP.	2	0	2	0	0	0	0	0	0	0
○	060005	YAMAGATA UNIV.	2	0	0	0	0	0	0	0	0	2
○	070003	FUKUSHIMA MED. COLL.	9	0	3	0	0	0	0	0	0	6
○	080001	TSUCHIURA KYODO GENERAL HOSP	2	2	0	0	0	0	0	0	0	0
○	080006	TSUKUBA GAKUEN HOSP.	2	2	0	0	0	0	0	0	0	0
○	080007	TSUKUBA UNIV.	8	0	8	0	0	0	0	0	0	0
○	080021	HITACHI GENERAL HOSP.	6	6	0	0	0	0	0	0	0	0
○	080031	TSUKUBA MED. CENTER	4	0	3	0	0	0	0	0	0	1
○	090001	TOCHIGI MED. CENTER	2	0	2	0	0	0	0	0	0	0
○	090004	DOKKYO MED. UNIV.	5	0	4	0	0	0	0	0	0	1
○	090005	SAISEIKAI UTSUNOMIYA HOSP.	3	0	3	0	0	0	0	0	0	0
○	090011	ASHIKAGA RED CROSS HOSP.	4	0	2	1	0	0	0	0	0	1
○	090015	JICHI MED. UNIV.	10	0	5	0	0	0	0	0	0	5
○	090016	TOCHIGI CANCER CENTER	1	0	1	0	0	0	0	0	0	0
○	100012	GUNMA UNIV.	8	0	5	1	0	1	0	0	0	1
○	110008	SAITAMA MED. CENTER	5	0	5	0	0	0	0	0	0	0
○	110014	KOSHIGAYA MUNI. HOSP.	8	0	6	0	0	0	0	1	0	1
○	110023	SAITAMA NATIONAL HOSP.	1	0	1	0	0	0	0	0	0	0
○	110027	NATIONAL DEFENSE MED. COLL.	9	9	0	0	0	0	0	0	0	0
○	110030	SAITAMA CANCER CENTER	2	0	2	0	0	0	0	0	0	0
○	120005	CHIBA UNIV.	12	12	0	0	0	0	0	0	0	0
○	120009	NIPPON MED. SCH. CHIBA HOKUSOU HOSP.	5	5	0	0	0	0	0	0	0	0
○	120012	MATSUDO CITY HOSP.	5	0	4	0	0	1	0	0	0	0
○	120015	TOKYO DENTAL COLL. ICHIKAWA GENERAL HOSP.	6	2	4	0	0	0	0	0	0	0
○	120021	JIKEI UNIV. KASHIWA HOSP.	22	22	0	0	0	0	0	0	0	0
○	120023	JUNTENDO UNIV. URAYASU HOSP.	5	0	5	0	0	0	0	0	0	0
○	120029	ASAHI CENTRAL HOSP.	6	0	6	0	0	0	0	0	0	0
○	120035	KAMEDA MED. CENTER	9	0	4	0	0	0	0	0	0	5
○	120042	CHIBA CANCER CENTER	1	1	0	0	0	0	0	0	0	0
○	130005	mitsui MEMORIAL HOSP.	2	0	0	1	0	0	0	0	0	1
○	130009	NATIONAL CANCER CENTER	3	0	2	0	0	0	0	0	0	1
○	130013	JIKEI UNIV.	21	0	17	0	0	0	0	0	0	4
○	130023	JUNTENDO UNIV.	11	0	11	0	0	0	0	0	0	0
○	130024	TOKYO MED. DENT. UNIV.	4	0	4	0	0	0	0	0	0	0
○	130025	NIPPON MED. SCH.	5	0	4	0	0	0	0	0	0	1
○	130029	TOKYO WOMENS MED. UNIV. MED. CENTER EAST	4	0	3	0	0	0	0	0	0	1
○	130034	JIKEI UNIV. KATSUSHIKA MED. CENTER	6	6	0	0	0	0	0	0	0	0
○	130038	TOKYO METRO. BOKUTOH HOSP.	7	7	0	0	0	0	0	0	0	0
○	130044	NTT MED. CENTER TOKYO	3	0	3	0	0	0	0	0	0	0
○	130046	SHOWA UNIV.	8	0	5	0	0	0	0	0	0	3
○	130050	TOHO UNIV. OMORI MED. CENTER	7	0	7	0	0	0	0	0	0	0

	A	B	C	D	E	F	G	H	I	J	K
	Institution	Total No. Treated	no description	Alive with no Evidence of the Disease	Alive with Carcinoma	Alive with or without Carcinoma Unknown	Died of Carcinoma	Died of Other Malignant Tumor	Died of Intercurrent Disease	Cause of Death Unknown	Lost to follow-up
○	130055	RED CROSS MED. CENTER	5	0	4	0	0	0	0	0	1
○	130061	TOKYO MED. CENTER	11	1	10	0	0	0	0	0	0
○	130063	KOSEI CENTRAL HOSP.	1	0	1	0	0	0	0	0	0
	130064	TOHO UNIV. OHASHI MED. CENTER	1	1	0	0	0	0	0	0	0
	130074	TOKYO MED. UNIV.	12	12	0	0	0	0	0	0	0
○	130077	KEIO UNIV.	18	0	15	0	0	0	1	0	2
	130080	NATIONAL CENTER FOR GLOBAL HEALTH AND MED.	2	2	0	0	0	0	0	0	0
	130085	KOSEI HOSP.	4	4	0	0	0	0	0	0	0
○	130092	TEIKYO UNIV.	4	0	4	0	0	0	0	0	0
○	130095	NIHON UNIV.	10	0	9	0	0	0	0	0	1
	130099	MUSASHINO RED CROSS HOSP.	8	8	0	0	0	0	0	0	0
	130100	KYORIN UNIV.	7	0	3	0	0	0	1	0	3
	130112	MACHIDA MUNI. HOSP.	4	0	2	0	0	0	0	0	2
	130119	NIPPON MED. SCH. TAMA NAGAYAMA HOSP.	2	2	0	0	0	0	0	0	0
○	130122	TOKYO METRO. KOMAGOME HOSP.	13	0	13	0	0	0	0	0	0
	130124	KYOUNDO HOSP.	2	0	0	0	1	0	0	0	1
○	130125	CANCER INST. HOSP.	19	0	19	0	0	0	0	0	0
	130135	TAMA-NAMBU CHIHIKI HOSP.	5	5	0	0	0	0	0	0	0
	130137	TOKAI UNIV. HACHIOJI HOSP.	1	1	0	0	0	0	0	0	0
	140001	KAWASAKI MUNI. HOSP.	1	1	0	0	0	0	0	0	0
	140006	NIPPON MED. SCH. MUSASHI KOSUGI HOSP.	4	0	3	0	0	0	0	0	1
	140008	KANTO ROSAI HOSP.	2	0	1	0	0	0	0	0	1
	140012	ST. MARIANNA UNIV.	3	0	1	1	0	0	0	0	1
○	140016	YOKOHAMA ROSAI HOSP.	2	0	2	0	0	0	0	0	0
	140017	SHOWA UNIV. FUJIGAOKA HOSP.	13	0	8	0	0	0	0	0	5
	140020	KITASATO UNIV.	11	0	7	0	1	0	0	0	3
○	140029	YOKOHAMA CITY UNIV.	6	0	5	0	0	0	0	0	1
	140030	YOKOHAMA MINAMI KYOSAI HOSP.	3	0	2	0	0	0	0	0	1
○	140035	YOKOHAMA MUNI. CITIZENS HOSP.	2	0	1	0	0	0	1	0	0
	140037	ST. MARIANNA UNIV. YOKOHAMA CITY SEIBU HOSP.	2	2	0	0	0	0	0	0	0
	140054	ISEHARA KYODO HOSP.	3	0	1	0	0	0	0	0	2
	140055	TOKAI UNIV.	4	0	2	0	0	0	0	0	2
○	140059	KANAGAWA CANCER CENTER	4	0	4	0	0	0	0	0	0
○	140061	YOKOHAMA CITY UNIV. MED. CENTER	4	0	4	0	0	0	0	0	0
○	150006	UNIV. OF YAMANASHI	8	0	7	0	0	0	0	0	1
○	160001	NAGANO RED CROSS HOSP.	7	0	7	0	0	0	0	0	0
	170006	FUJI CITY GENERAL HOSP.	2	0	0	0	0	0	0	0	2
○	170009	SHIZUOKA GENERAL HOSP.	6	0	5	0	0	0	0	0	1
	180001	NAGAOKA RED CROSS HOSP.	2	2	0	0	0	0	0	0	0
○	180010	NIIGATA CANCER CENTER HOSP.	3	0	3	0	0	0	0	0	0
	190001	TOYAMA UNIV.	2	0	1	0	0	0	0	0	1
○	190002	TOYAMA RED CROSS HOSP.	1	0	1	0	0	0	0	0	0
	190009	TAKAOKA CITY HOSP.	1	1	0	0	0	0	0	0	0
○	200004	KANAZAWA UNIV.	3	0	3	0	0	0	0	0	0
	210002	FUKUI PREF. HOSP.	4	4	0	0	0	0	0	0	0
	210003	FUKUI UNIV.	3	3	0	0	0	0	0	0	0
	210004	FUKUI RED CROSS HOSP.	3	3	0	0	0	0	0	0	0
	220006	OGAKI MUNI. HOSP.	7	7	0	0	0	0	0	0	0
	230001	TOYOHASHI MUNI. HOSP.	10	10	0	0	0	0	0	0	0
○	230014	RED CROSS NAGOYA DAIICHI HOSP.	7	0	7	0	0	0	0	0	0
	230031	NAGOYA UNIV.	3	3	0	0	0	0	0	0	0
○	230034	NAGOYA CITY UNIV.	2	0	2	0	0	0	0	0	0
○	230035	FUJITA HEALTH UNIV.	1	0	1	0	0	0	0	0	0
○	230040	AICHI MED. UNIV.	3	0	3	0	0	0	0	0	0
○	230052	AICHI CANCER CENTER	5	0	5	0	0	0	0	0	0
	240003	YOKKAICHI MUNI. HOSP	3	0	0	0	0	0	0	1	2
○	240009	MIE UNIV.	12	0	12	0	0	0	0	0	0

	A	B	C	D	E	F	G	H	I	J	K
	Institution	Total No. Treated	no description	Alive with no Evidence of the Disease	Alive with Carcinoma	Alive with or without Carcinoma Unknown	Died of Carcinoma	Died of Other Malignant Tumor	Died of Intercurrent Disease	Cause of Death Unknown	Lost to follow-up
○	240015 ISE RED CROSS HOSP.	3	0	3	0	0	0	0	0	0	0
○	250001 OHTSU RED CROSS HOSP.	2	0	2	0	0	0	0	0	0	0
○	250003 SHIGA UNIV. OF MED. SCIENCE	4	0	4	0	0	0	0	0	0	0
	250006 OMIHACHIMAN COMMUNITY MED. CENTER	2	0	1	0	0	0	0	0	0	1
○	260002 KYOTO 2ND RED CROSS HOSP.	6	0	5	0	0	0	0	0	0	1
○	260003 KYOTO PREF. UNIV. OF MED.	5	0	5	0	0	0	0	0	0	0
○	260013 KYOTO KATSURA HOSP.	2	0	2	0	0	0	0	0	0	0
	260017 SAISEIKAI KYOTO HOSP.	3	3	0	0	0	0	0	0	0	0
○	270003 KITANO HOSP.	5	0	4	0	0	0	0	0	0	1
	270007 OSAKA CITY GENERAL HOSP.	4	0	2	0	0	0	0	0	0	2
○	270009 OSAKA NATIONAL HOSP.	3	0	2	0	0	1	0	0	0	0
	270013 OSAKA POLICE HOSP.	2	0	1	0	0	0	0	0	0	1
	270032 SAISEIKAI SUITA HOSP.	3	3	0	0	0	0	0	0	0	0
○	270035 OSAKA UNIV.	9	0	8	0	0	0	0	0	0	1
○	270041 OSAKA MED. COLL.	1	0	1	0	0	0	0	0	0	0
	270042 KANSAI MED. UNIV.	7	0	5	0	0	0	0	0	0	2
	270060 SAKAI CITY HOSP.	2	2	0	0	0	0	0	0	0	0
	270062 OSAKA ROSAI HOSP.	14	0	9	0	0	1	0	0	0	4
	270101 OSAKA MED. CENTER FOR CANCER AND CARDIOVASCULAR DISEASES	3	0	2	0	0	0	0	0	0	1
○	280002 KOBE CITY MED. CENTER GENERAL HOSP.	4	0	4	0	0	0	0	0	0	0
○	280015 KANSAI ROSAI HOSP.	3	0	3	0	0	0	0	0	0	0
	280021 HYOGO MED. COLL.	8	8	0	0	0	0	0	0	0	0
	280028 TOYOOKA PUBLIC HOSP.	4	0	3	0	0	0	0	0	0	1
○	280030 HIMEJI RED CROSS HOSP.	7	0	7	0	0	0	0	0	0	0
	280031 HIMEJI MED. CENTER	1	1	0	0	0	0	0	0	0	0
○	280033 HYOGO CANCER CENTER	8	0	8	0	0	0	0	0	0	0
	290003 NARA PREF. NARA HOSP.	1	0	0	0	0	0	0	0	0	1
○	290004 TENRI HOSP.	1	0	1	0	0	0	0	0	0	0
	290007 NARA MED. UNIV.	2	0	0	0	0	0	0	0	0	2
○	290019 YAMATO TAKADA MUNI. HOSP.	1	0	1	0	0	0	0	0	0	0
	300002 JAPANESE RED CROSS WAKAYAMA MED. CENTER	10	1	6	0	0	0	0	0	0	3
	300003 WAKAYAMA MED. UNIV.	4	4	0	0	0	0	0	0	0	0
	310001 TOTTORI PREF. CENTRAL HOSP.	3	0	2	0	0	0	0	0	0	1
○	310007 TOTTORI UNIV.	1	0	1	0	0	0	0	0	0	0
	320003 SHIMANE UNIV.	1	1	0	0	0	0	0	0	0	0
	330002 JAPANESE RED CROSS OKAYAMA HOSP.	7	0	4	0	0	0	0	0	0	3
○	330003 KAWASAKI HOSP.	2	0	2	0	0	0	0	0	0	0
	330004 OKAYAMA SAISEIKAI GENERAL HOSP.	3	0	2	0	0	0	0	0	0	1
○	330006 OKAYAMA UNIV.	12	0	12	0	0	0	0	0	0	0
○	330008 KURASHIKI CENTRAL HOSP.	9	0	7	0	0	1	0	0	0	1
	330009 KAWASAKI MED. SCH.	1	1	0	0	0	0	0	0	0	0
○	330010 KURASHIKI MED. CENTER	1	0	1	0	0	0	0	0	0	0
○	340001 FUKUYAMA MED. CENTER	1	0	0	0	0	1	0	0	0	0
	340010 HIROSHIMA CITY ASA HOSP.	7	0	3	0	0	0	0	0	0	4
○	340012 HIROSHIMA UNIV.	1	0	1	0	0	0	0	0	0	0
○	340014 HIROSHIMA PREF. HOSP.	7	1	6	0	0	0	0	0	0	0
	340015 KURE MED. CENTER	3	0	2	0	0	0	0	0	0	1
	340018 HIROSHIMA GENERAL HOSP.	3	0	1	0	0	0	0	0	0	2
	350003 TOKUYAMA CENTRAL HOSP.	2	2	0	0	0	0	0	0	0	0
	350008 YAMAGUCHI RED CROSS HOSP.	3	0	2	0	0	0	0	0	0	1
○	350009 YAMAGUCHI UNIV.	1	0	1	0	0	0	0	0	0	0
	360002 TOKUSHIMA MUNI. HOSP.	1	0	0	0	0	0	0	0	0	1
○	360003 TOKUSHIMA UNIV.	3	0	3	0	0	0	0	0	0	0
○	370001 TAKAMATSU RED CROSS HOSP.	4	0	4	0	0	0	0	0	0	0
○	370002 TAKAMATSU MUNI. HOSP.	2	0	2	0	0	0	0	0	0	0
○	380001 SHIKOKU CANCER CENTER	8	0	7	0	0	0	0	0	0	1
○	380006 EHIME UNIV.	3	0	2	0	0	0	0	0	0	1

	A	B	C	D	E	F	G	H	I	J	K
	Institution	Total No. Treated	no description	Alive with no Evidence of the Disease	Alive with Carcinoma	Alive with or without Carcinoma Unknown	Died of Carcinoma	Died of Other Malignant Tumor	Died of Intercurrent Disease	Cause of Death Unknown	Lost to follow-up
○	390003 KOCHI HEALTH SCIENCES CENTER	5	0	4	0	0	0	0	0	0	1
	390006 KOCHI UNIV.	5	0	3	0	0	0	0	0	0	2
	400003 KOKURA MED. CENTER	7	7	0	0	0	0	0	0	0	0
	400008 UNIV. OF OCCUPATIONAL AND ENVIRONMENTAL HEALTH	6	0	4	0	0	0	0	0	0	2
○	400010 KYUSHU MED. CENTER	3	0	2	1	0	0	0	0	0	0
○	400012 KYUSHU UNIV.	18	0	17	0	0	1	0	0	0	0
	400014 FUKUOKA RED CROSS HOSP.	3	0	2	0	0	0	0	0	0	1
	400020 KURUME UNIV.	2	0	1	0	0	0	0	0	0	1
	400026 SASEIKAI FUKUOKA GENERAL HOSP.	13	0	6	0	0	0	0	0	0	7
○	400040 KYUSHU CANCER CENTER	9	0	9	0	0	0	0	0	0	0
	410005 SAGA UNIV.	5	0	3	0	0	0	0	0	0	2
○	420001 NAGASAKI HARBOR MED. CENTER CITY HOSP.	6	0	6	0	0	0	0	0	0	0
○	420002 NAGASAKI UNIV.	5	0	2	0	0	1	0	1	0	1
	420003 RED CROSS NAGASAKI ATOMIC BOMB HOSP.	1	1	0	0	0	0	0	0	0	0
○	420006 SASEBO KYOSAI HOSP.	2	0	2	0	0	0	0	0	0	0
○	430001 KUMAMOTO MED. CENTER	4	0	4	0	0	0	0	0	0	0
○	430002 KUMAMOTO UNIV.	11	0	11	0	0	0	0	0	0	0
	430003 KUMAMOTO CITY HOSP.	7	0	3	0	0	0	0	0	0	4
○	440002 OITA PREF. HOSP.	5	0	5	0	0	0	0	0	0	0
	450001 MIYAZAKI PREF. HOSP.	12	0	8	0	0	0	0	0	0	4
	460001 KAGOSHIMA UNIV.	13	7	0	0	0	0	0	0	0	6
	460004 KAGOSHIMA CITY HOSP.	8	0	5	0	0	1	0	0	0	2
○	470008 RYUKYU UNIV.	5	1	3	0	0	1	0	0	0	0
○	470010 OKINAWA PREF. CHUBU HOSP.	6	0	6	0	0	0	0	0	0	0
	Total	989	192	626	6	0	12	1	8	2	142

Table 1. No. of Patients by Stage and Age

FIGO Stage		Age		~19		20~29		30~39		40~49		50~59		60~69		70~79		80~		Total	
		No.	%	No.	%	No.	%	No.	%	No.	%	No.	%	No.	%	No.	%	No.	%	No.	%
I	A	12	2.3	35	6.6	88	16.7	57	10.8	61	11.6	62	11.8	39	7.4	9	1.7	363	68.9		
	B	0	0.0	2	0.4	1	0.2	2	0.4	2	0.4	0	0.0	2	0.4	0	0.0	9	1.7		
	C(b)	4	0.8	7	1.3	20	3.8	7	1.3	21	4.0	11	2.1	11	2.1	6	1.1	87	16.5		
	C(1)	0	0.0	0	0.0	2	0.4	1	0.2	0	0.0	0	0.0	0	0.0	0	0.0	3	0.6		
	C(2)	0	0.0	1	0.2	1	0.2	3	0.6	1	0.2	2	0.4	1	0.2	1	0.2	10	1.9		
	C(a)	0	0.0	7	1.3	6	1.1	0	0.0	11	2.1	3	0.6	2	0.4	0	0.0	29	5.5		
	total		16	3.0	52	9.9	118	22.4	70	13.3	96	18.2	78	14.8	55	10.4	16	3.0	501	95.1	
II	A	0	0.0	0	0.0	0	0.0	1	0.2	0	0.0	0	0.0	0	0.0	0	0.0	1	0.2		
	B	1	0.2	1	0.2	0	0.0	1	0.2	0	0.0	0	0.0	0	0.0	0	0.0	3	0.6		
	C(b)	0	0.0	0	0.0	0	0.0	0	0.0	1	0.2	1	0.2	0	0.0	0	0.0	2	0.4		
	C(1)	0	0.0	0	0.0	0	0.0	0	0.0	0	0.0	0	0.0	0	0.0	0	0.0	0	0.0		
	C(2)	0	0.0	1	0.2	2	0.4	0	0.0	1	0.2	0	0.0	0	0.0	0	0.0	4	0.8		
	C(a)	0	0.0	1	0.2	1	0.2	0	0.0	0	0.0	0	0.0	0	0.0	0	0.0	2	0.4		
	total		1	0.2	3	0.6	3	0.6	2	0.4	2	0.4	1	0.2	0	0.0	0	0.0	12	2.3	
III	A	0	0.0	2	0.4	0	0.0	0	0.0	0	0.0	0	0.0	1	0.2	0	0.0	3	0.6		
	B	0	0.0	0	0.0	2	0.4	1	0.2	1	0.2	0	0.0	2	0.4	0	0.0	6	1.1		
	C	0	0.0	0	0.0	1	0.2	1	0.2	1	0.2	1	0.2	0	0.0	0	0.0	4	0.8		
	total		0	0.0	2	0.4	3	0.6	2	0.4	2	0.4	1	0.2	3	0.6	0	0.0	13	2.5	
IV		0	0.0	0	0.0	0	0.0	0	0.0	0	0.0	0	0.0	0	0.0	0	0.0	0	0.0		
Neoadjuvant Chemotherapy		0	0.0	0	0.0	0	0.0	1	0.2	0	0.0	0	0.0	0	0.0	0	0.0	1	0.2		
Unknown		0	0.0	0	0.0	0	0.0	0	0.0	0	0.0	0	0.0	0	0.0	0	0.0	0	0.0		
Total		17	3.2	57	10.8	124	23.5	75	14.2	100	19.0	80	15.2	58	11.0	16	3.0	527			

Table 3. 5-Year Results, Treatment Started in 2007

5-year result	No. of patients	%
Alive with no Evidence of the Disease	482	91.5
Alive with Carcinoma	3	0.6
Alive with or without Carcinoma Unknown	0	0.0
Died of Carcinoma	8	1.5
Died of Other Malignant Tumor	1	0.2
Died of Intercurrent Disease	7	1.3
Cause of Death Unknown	1	0.2
Lost to follow-up	25	4.7
Total	527	

Table 4. 5-Year Survival by Stage, Treatment Started in 2007

FIGO Stage		Patients treated		5-year survival		Lost to follow-up
		No.		%		
I	A	363	501	98.1	96.9	23/501 (4.6%)
	B	9		88.9		
	C(b)	87		93.9		
	C(1)	3		100.0		
	C(2)	10		77.8		
	C(a)	29		100.0		
II	A	1	12	100.0	100.0	0/12 (0.0%)
	B	3		100.0		
	C(b)	2		100.0		
	C(1)	0		—		
	C(2)	4		100.0		
	C(a)	2		100.0		
III	A	3	13	100.0	83.3	2/13 (15.4%)
	B	6		83.3		
	C	4		75.0		
IV		0		—		—
Neoadjuvant Chemotherapy		1		100.0		0/1 (0.0%)
Unknown		0		—		—
Total		527				

**Table 5. 5-Year Survival by Stage, Treatment Started in 2007
(Surface Epithelial-Stromal Tumors)**

FIGO Stage		Patients treated		5-year survival		Lost to follow-up
		No.		%		
I	A	293	413	97.7	96.2	19/413 (4.6%)
	B	8		87.5		
	C(b)	78		93.2		
	C(1)	3		100.0		
	C(2)	10		77.8		
	C(a)	21		100.0		
II	A	1	8	100.0	100.0	0/8 (0.0%)
	B	0		—		
	C(b)	2		100.0		
	C(1)	0		—		
	C(2)	4		100.0		
	C(a)	1		100.0		
III	A	3	11	100.0	90.0	2/11 (18.2%)
	B	5		80.0		
	C	3		100.0		
IV		0		—		0/0 (0.0%)
Neoadjuvant Chemotherapy		1		100.0		0/1 (0.0%)
Unknown		0		—		0/0 (0.0%)
Total		433				

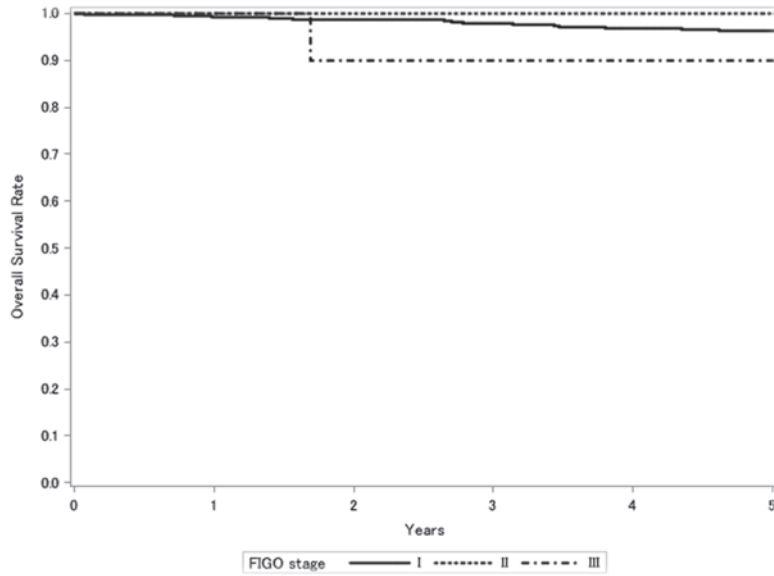
Table 6. 5-Year Survival by Histological Type, Treatment Started in 2007

Histological Type	FIGO Stage	Patients treated		5-year survival	Lost to follow-up
		No.	%		
Sex Cord/Stromal Tumors	I	44	100.0	2/44 (4.5%)	
	II	2	100.0	0/2 (0.0%)	
	III	1	0.0	0/1 (0.0%)	
	IV	0	—	—	
	Neoadjuvant Chemotherapy	0	—	—	
Germ Cell Tumors	I	44	100.0	2/44 (4.5%)	
	II	2	100.0	0/2 (0.0%)	
	III	1	100.0	0/1 (0.0%)	
	IV	0	—	—	
	Neoadjuvant Chemotherapy	0	—	—	

Table 7. 5-Year Survival by Stage and Histological Type, Treatment Started in 2007

FIGO Stage	Histology Type	Patients treated		5-year survival	Lost to follow-up
		No.	%		
I	Serous	97	97.8	4/97 (4.1%)	
	Mucinous	295	95.5	14/295 (4.7%)	
	Endometrioid	4	100.0	1/4 (25.0%)	
	Clear	8	100.0	0/8 (0.0%)	
	Other	9	100.0	0/9 (0.0%)	
II	Serous	5	100.0	0/5 (0.0%)	
	Mucinous	2	100.0	0/2 (0.0%)	
	Endometrioid	0	—	—	
	Clear	0	—	—	
	Other	1	100.0	0/1 (0.0%)	
III	Serous	9	100.0	1/9 (11.1%)	
	Mucinous	2	50.0	1/2 (50.0%)	
	Endometrioid	0	—	—	
	Clear	0	—	—	
	Other	0	—	—	
IV	Serous	0	—	—	
	Mucinous	0	—	—	
	Endometrioid	0	—	—	
	Clear	0	—	—	
	Other	0	—	—	
Neoadjuvant Chemotherapy	Serous	0	—	—	
	Mucinous	0	—	—	
	Endometrioid	0	—	—	
	Clear	0	—	—	
	Other	1	100.0	0/1 (0.0%)	
Unknown	Serous	0	—	—	
	Mucinous	0	—	—	
	Endometrioid	0	—	—	
	Clear	0	—	—	
	Other	0	—	—	

Figure 1.
Kaplan-Meier Estimated Overall Survival Curves of Ovarian Borderline Tumor Patients by FIGO Stage, Treatment Started in 2007 (Surface Epithelial-Stromal Tumors)



Test of Equality over Strata			
Test	Chi-Square	DF	Pr >Chi-Square
Log-rank	1.4085	2	0.4945
Wilcoxon	1.5731	2	0.4554
-2Log (LR)	1.3984	2	0.4970

Adjustment for Multiple Comparisons for the Log-rank Test				
Strata Comparison		Chi-Square	p-Values	
FIGO Stage	FIGO Stage		Raw	Tukey-Kramer
I	II	0.0001	0.9939	1.0000
I	III	0.5327	0.4655	0.7458
II	III	1.3137	0.2517	0.4856