

報 告

婦人科腫瘍委員会

第50回治療年報

2002年に治療した子宮頸癌、子宮体癌の5年治療成績について

婦人科腫瘍委員会の第50回治療年報(2002年治療開始例)の報告をいたします。今回より、卵巣腫瘍の治療成績が加わりました。

なお、第49回治療年報より、従来の直接法最小生存率*による方法からKaplan-Meier法に変更しました。追跡不能症例(Lost to follow-up)が多いと治療成績の信頼性が低下するため、予後追跡報告で追跡不能症例が20%を超える施設のデータは治療成績の解析には用いないこととしています。予後解析に使用された施設は、施設名の左に○がつけてあります。

加盟機関の先生方のご苦勞に感謝申し上げます、また婦人科腫瘍委員会の全委員に御礼申し上げます。今後とも何卒よろしくお願い申し上げます。

婦人科腫瘍委員会
委員長 青木陽一

子宮頸癌治療成績

Table A	5年後の治療転帰
Table 1~8	項目別成績
Figure 1~10	予後5年生存率

子宮体癌治療成績

Table A	5年後の治療転帰
Table 1~8	項目別成績
Figure 1~10	予後5年生存率

卵巣悪性腫瘍治療成績

Table A	5年後の治療転帰
Table 1~6	項目別成績
Figure 1~9	予後5年生存率

卵巣境界悪性腫瘍治療成績

Table A	5年後の治療転帰
Table 1~6	項目別成績

*最小生存率：直接法とは観察開始時点から一定の年限を経過した症例について生存者数を観察対象者数で割った値である。この場合、消息不明例の取扱いによって3種類の生存率が計算される。すなわち、消息不明例をすべて死亡とみなして計算する最小生存率、すべて生存とみなして計算する最大生存率、消息不明例を対象から除外して計算する推定(概算)生存率の3種類である。

(日本癌治療学会・癌規約総論, 金原出版, 1991より抜粋)

本報告に関するお問い合わせは婦人科腫瘍委員会宛にお願い致します。

子宮頸癌治療成績

Statement for the Year 2002, Inclusive, Cervix

Table A. 5-Year Results, Stage I-IV

A	B	C	D	E	F	G	H	I	J	K
Institution	Total No. Treated	no description	Alive with no Evidence of the Disease	Alive with Carcinoma	Alive with or without Carcinoma Unknown	Died of Carcinoma	Died of Other Malignant Tumor	Died of Intercurrent Disease	Cause of Death Unknown	Lost to follow-up
1	KOBE UNIV.	17	17	0	0	0	0	0	0	0
3	TOHOKU UNIV.	35	0	23	2	4	4	0	0	2
4	FUKUSHIMA MED. UNIV.	12	12	0	0	0	0	0	0	0
5	KANAZAWA UNIV.	21	0	6	0	1	3	0	0	11
6	OSAKA NATIONAL HOSP.	65	0	37	0	0	7	0	7	14
7	GIFU UNIV.	22	0	10	1	1	2	1	5	1
8	SHINSHU UNIV.	16	14	0	0	0	2	0	0	0
9	NIPPON MED. SCH.	14	8	0	0	0	1	0	0	5
10	NAGASAKI UNIV.	33	0	21	3	1	8	0	0	0
11	RED CROSS MED. CENTER	9	0	6	0	0	0	0	0	3
12	KUMAMOTO UNIV.	41	0	31	0	0	5	1	0	4
15	KEIO UNIV.	46	1	26	2	0	9	1	0	7
16	KYUSHU UNIV.	34	0	19	0	0	4	2	0	9
17	TOKYO UNIV.	24	24	0	0	0	0	0	0	0
18	JIKEI UNIV.	23	22	0	0	0	1	0	0	0
19	CANCER INST. HOSP.	94	0	48	4	0	5	0	1	36
20	KYOTO UNIV.	9	0	8	0	0	1	0	0	0
21	NIIGATA UNIV.	30	16	0	0	0	6	0	1	7
22	OKAYAMA UNIV.	48	38	0	0	0	2	0	0	8
23	HIROSHIMA RED CROSS HOSP.	15	13	0	0	0	0	0	1	1
24	OSAKA CITY UNIV.	37	37	0	0	0	0	0	0	0
25	HIROSAKI UNIV.	14	0	10	0	0	3	0	0	1
26	SENDAI MED. CENTER	18	0	12	1	0	4	0	0	1
27	KURUME UNIV.	38	1	26	0	1	6	0	0	4
29	JUNTENDO UNIV.	16	0	9	0	0	7	0	0	0
32	KAGOSHIMA UNIV.	20	0	12	0	0	1	0	1	6
33	HOKKAIDO UNIV.	32	28	0	0	0	2	0	1	1
34	TOKYO MED. DENT. UNIV.	15	12	0	0	1	0	0	2	0
35	MIYAZAKI PREF. HOSP.	21	0	10	2	0	3	0	0	6
40	MITUI MEMORIAL HOSP.	16	16	0	0	0	0	0	0	0
41	SAPPORO MED. UNIV.	45	0	26	0	0	0	0	0	19
42	WAKAYAMA RED CROSS HOSP.	14	0	0	5	0	0	0	0	9
44	OSAKA UNIV.	14	14	0	0	0	0	0	0	0
47	NAGOYA UNIV.	17	0	13	0	0	2	0	0	2
48	NAGOYA CITY UNIV.	16	0	9	0	0	3	0	0	4
49	KURASHIKI CENTRAL HOSP.	17	0	7	0	0	2	0	0	8
50	OKAYAMA RED CROSS HOSP.	9	9	0	0	0	0	0	0	0
56	MIE UNIV.	24	0	14	0	0	5	0	1	4
57	KANAZAWA MED. CENTER	17	15	0	0	0	2	0	0	0
58	NTT MED. CENTER TOKYO	3	0	3	0	0	0	0	0	0
59	KOBE CITY MED. CENTER GENERAL HOSP.	19	0	11	0	0	3	0	0	5
61	YOKOHAMA CITY UNIV.	34	0	20	1	0	12	0	0	1
63	TOTTORI UNIV.	25	0	19	1	1	3	0	1	0
67	HIROSHIMA UNIV.	23	22	0	0	0	1	0	0	0
68	YAMAGUCHI UNIV.	19	0	10	0	0	2	0	1	5
69	TOYOOKA PUBLIC HOSP.	15	0	12	0	0	0	0	0	3
70	GUNMA UNIV.	30	0	25	0	0	3	0	0	2
77	CHIBA UNIV.	22	0	12	0	1	5	0	0	4
79	KANSAI MED. UNIV.	22	0	8	0	0	3	0	0	11
82	YAMAGUCHI RED CROSS HOSP.	16	0	9	1	0	1	0	0	5
84	NIPPON MED. SCH. MUSASHI KOSUGI HOSP.	14	14	0	0	0	0	0	0	0

	A	B	C	D	E	F	G	H	I	J	K
	Institution	Total No. Treated	no description	Alive with no Evidence of the Disease	Alive with Carcinoma	Alive with or without Carcinoma Unknown	Died of Carcinoma	Died of Other Malignant Tumor	Died of Intercurrent Disease	Cause of Death Unknown	Lost to follow-up
	85 NAGOYA MED. CENTER	22	5	0	0	0	3	0	0	0	14
	89 NIHON UNIV.	15	0	4	0	0	5	0	0	0	6
○	90 RED CROSS NAGOYA DAIICHI HOSP.	17	0	9	1	0	5	0	0	0	2
	92 NATIONAL CENTER FOR GLOBAL HEALTH AND MED.	9	7	0	0	0	2	0	0	0	0
○	94 KUMAMOTO MED. CENTER	27	0	19	0	0	6	0	1	1	0
	95 NARA MED. UNIV.	20	0	8	0	0	2	0	0	0	10
	96 OSAKA MED. COLL.	54	0	29	0	0	4	0	1	0	20
	97 KYUSHU UNIV. SEIKEN	12	12	0	0	0	0	0	0	0	0
	100 YAMANASHI PREF. CENTRAL HOSP.	17	12	0	0	0	2	0	1	0	2
○	101 NATIONAL CANCER CENTER	76	0	53	2	0	19	0	2	0	0
	102 SHIZUOKA GENERAL HOSP.	18	0	11	2	0	1	0	0	0	4
	103 OSAKA MED. CENTER FOR CANCER AND CVD	38	0	24	1	0	5	0	0	0	8
	105 OKAYAMA SAISEIKAI GENERAL HOSP.	3	2	0	0	0	0	0	0	0	1
	109 FUKUI RED CROSS HOSP.	6	0	2	0	0	0	0	0	0	4
	110 OSAKA POLICE HOSP.	9	0	5	0	1	0	0	0	0	3
○	111 HYOGO CANCER CENTER	83	0	56	4	0	20	0	0	0	3
	114 KYUSHU MED. CENTER	24	23	0	0	0	1	0	0	0	0
○	116 AICHI CANCER CENTER	56	0	41	3	0	11	0	1	0	0
○	117 KANAGAWA CANCER CENTER	120	0	87	1	0	23	0	1	4	4
○	118 OITA PREF. HOSP.	36	0	24	1	1	5	0	0	0	5
	119 TOYAMA PREF. CENTRAL HOSP.	13	13	0	0	0	0	0	0	0	0
	120 TOKUSHIMA UNIV.	24	0	13	1	0	3	0	1	0	6
	121 SHOWA UNIV.	29	0	13	3	0	5	0	2	0	6
○	122 NIIGATA CANCER CENTER HOSP.	45	0	26	2	0	7	1	1	0	8
○	123 HIROSHIMA CITY HOSP.	24	0	12	0	0	9	0	0	0	3
○	125 YAMAGATA PREF. CENTRAL HOSP.	10	0	8	0	0	0	1	0	0	1
○	126 WAKAYAMA MED. UNIV.	28	4	17	0	0	6	0	1	0	0
○	127 TAKAMATSU RED CROSS HOSP.	13	0	11	0	0	0	1	0	0	1
	129 KAGOSHIMA CITY HOSP.	50	50	0	0	0	0	0	0	0	0
○	130 FUKUYAMA MED. CENTER	23	0	10	1	0	9	1	1	0	1
○	132 SHIKOKU CANCER CENTER	49	0	38	1	1	3	0	2	1	3
	133 KAWASAKI MUNI. HOSP.	33	31	0	0	0	2	0	0	0	0
○	136 ONOMICHI GENERAL HOSP.	6	0	4	0	0	1	0	0	0	1
	137 KUMAMOTO CITY HOSP.	32	20	0	0	0	1	0	0	5	6
○	139 KYOUNDO HOSP.	6	0	5	0	0	0	0	0	0	1
	140 KYUSHU KOSEINENKIN HOSP.	29	29	0	0	0	0	0	0	0	0
	141 KURE MED. CENTER	20	0	7	0	0	2	0	1	1	9
	143 GUNMA PREF. CANCER CENTER	64	0	41	1	1	6	2	0	0	13
	144 TOKUSHIMA PREF. CENTRAL HOSP.	5	0	2	0	0	0	0	0	0	3
	145 FUKUOKA UNIV.	39	0	19	0	0	7	1	0	1	11
○	146 TENRI HOSP.	21	0	12	0	1	4	0	0	0	4
○	147 KASUMIGAUZA MED. CENTER	10	0	5	1	0	3	0	0	0	1
○	148 CHIBA CANCER CENTER	31	0	22	1	0	0	0	0	5	3
○	149 KYUSHU CANCER CENTER	57	0	35	0	0	14	0	1	0	7
○	150 NAGANO RED CROSS HOSP.	22	0	14	0	0	5	0	0	0	3
	152 KANAZAWA MED. UNIV.	8	0	5	0	0	1	0	0	0	2
○	153 NATIONAL INS. OF RADIOLOGICAL SCIENCES	51	0	21	3	0	21	3	1	0	2
○	154 RYUKYU UNIV.	72	0	52	2	0	17	0	0	0	1
○	157 SAITAMA CANCER CENTER	75	0	46	4	0	19	2	0	0	4
	158 KINKI UNIV.	44	31	0	0	0	2	0	1	0	10
	159 RED CROSS NAGASAKI ATOMIC BOMB HOSP.	7	7	0	0	0	0	0	0	0	0
	160 HIMEJI RED CROSS HOSP.	21	21	0	0	0	0	0	0	0	0
○	161 TOKYO METRO. KOMAGOME HOSP.	31	0	22	1	0	3	0	0	3	2
○	163 JICHI MED. UNIV.	20	0	14	1	0	3	0	0	0	2
○	164 MURORAN CITY GENERAL HOSP.	1	0	0	0	0	1	0	0	0	0
○	166 TOCHIGI NATIONAL HOSP.	8	0	4	0	3	1	0	0	0	0

A		B	C	D	E	F	G	H	I	J	K	
Institution		Total No. Treated	no description	Alive with no Evidence of the Disease	Alive with Carcinoma	Alive with or without Carcinoma Unknown	Died of Carcinoma	Died of Other Malignant Tumor	Died of Intercurrent Disease	Cause of Death Unknown	Lost to follow-up	
○	167	ST. MARIANNA UNIV.	21	0	10	0	0	4	0	0	3	4
	168	KITAZATO UNIV.	39	0	25	0	0	5	0	0	1	8
	169	AKITA UNIV.	8	0	5	0	0	0	0	0	0	3
○	170	KANSAI ROSAI HOSP.	7	0	2	3	0	2	0	0	0	0
	171	KYOTO CITY HOSP.	10	10	0	0	0	0	0	0	0	0
	172	MITO MED. CENTER	34	25	0	0	0	4	1	1	0	3
○	173	ASAHIKAWA MED. COLL.	14	0	6	0	1	5	0	0	0	2
	175	SHIMANE UNIV.	9	4	0	0	0	0	0	0	1	4
	176	KAWASAKI MED. SCH.	10	10	0	0	0	0	0	0	0	0
○	177	SAITAMA NATIONAL HOSP.	11	0	7	0	0	4	0	0	0	0
○	178	TOYAMA UNIV.	6	0	3	0	0	2	0	0	0	1
○	179	TSUKUBA UNIV.	57	0	32	2	0	8	0	1	5	9
	180	HYOGO MED. COLL.	20	18	0	0	0	2	0	0	0	0
	181	AICHI MED. UNIV.	19	0	10	1	0	3	0	0	0	5
○	182	NATIONAL DEFENSE MED. COLL.	19	0	13	0	0	5	0	0	0	1
	183	KOCHI UNIV.	18	12	0	0	0	1	1	0	0	4
○	184	KYOTO 2ND RED CROSS HOSP.	16	0	10	0	0	4	0	1	0	1
	185	SAGA UNIV.	23	0	9	2	0	4	0	1	0	7
	186	NAGAOKA RED CROSS HOSP.	25	25	0	0	0	0	0	0	0	0
	187	EHIME UNIV.	24	23	0	0	0	1	0	0	0	0
	188	TOKUSHIMA MUNI. HOSP.	6	0	2	0	0	0	0	0	0	4
	189	TEIKYO UNIV.	15	0	4	0	0	7	0	0	0	4
○	190	HIMEJI MED. CENTER	5	0	5	0	0	0	0	0	0	0
○	194	TOKYO MED. CENTER	13	0	11	0	0	2	0	0	0	0
	195	TOKYO METRO. TAMA MED. CENTER	13	13	0	0	0	0	0	0	0	0
	196	YAMAGATA UNIV.	26	24	0	0	0	2	0	0	0	0
○	197	YOKKAICHI MUNI. HOSP.	6	0	4	0	0	1	0	0	0	1
	198	UNIV. OF YAMANASHI	16	0	8	0	0	2	0	0	0	6
	199	FUKUI UNIV.	10	9	0	0	0	1	0	0	0	0
○	200	SASEBO KYOSAI HOSP.	28	0	24	0	0	4	0	0	0	0
	201	KOSEI CENTRAL HOSP.	8	0	4	0	0	0	0	0	0	4
	202	SAITAMA MED. CENTER	42	35	0	0	0	6	0	1	0	0
	203	TOCHIGI CANCER CENTER	19	15	0	0	0	0	0	0	3	1
○	204	NIPPON MED. SCH. TAMA NAGAYAMA HOSP.	6	0	3	0	0	3	0	0	0	0
	205	KYORIN UNIV.	19	0	7	0	1	3	0	0	0	8
	206	OSAKA ROUSAI HOSP.	45	22	0	0	0	7	0	0	0	16
	207	OSAKA CITY GENERAL HOSP.	32	32	0	0	0	0	0	0	0	0
○	208	SIMANE PREF. CENTRAL HOSP.	5	0	4	0	0	1	0	0	0	0
	209	KURASIKI MED. CENTER	13	12	0	0	0	1	0	0	0	0
	210	MIDORI MUNI. HOSP.	11	10	0	0	0	1	0	0	0	0
	211	SAPPORO-KOUSEI GENERAL HOSP.	6	3	0	0	0	0	0	0	0	3
	213	DOKKYO MED. UNIV.	19	12	0	0	0	1	0	0	6	0
	214	MATSUMOTO MED. CENTER	9	8	0	0	0	1	0	0	0	0
	215	YAMADA RED CROSS HOSP.	27	0	12	0	0	8	0	0	0	7
○	216	FUKUOKA RED CROSS HOSP.	7	0	5	0	0	2	0	0	0	0
	218	HYOGO PREF. AWAJI HOSP.	7	7	0	0	0	0	0	0	0	0
○	219	SHIGA UNIV. OF MED. SCIENCE	21	0	14	0	0	3	0	0	1	3
○	220	ISEHARA KYODO HOSP.	5	0	4	0	0	1	0	0	0	0
	221	EHIME PREF. CENTRAL HOSP.	12	5	0	0	0	1	0	0	0	6
	222	KUSHIRO ROUSAI HOSP.	9	7	0	0	0	0	0	0	1	1
	223	TOTTORI PREF. CENTRAL HOSP.	8	0	5	0	0	1	0	0	0	2
○	225	ASHIKAGA RED CROSS HOSP.	8	0	3	1	0	2	0	0	2	0
	226	TSUKUBA MED. CENTER	2	2	0	0	0	0	0	0	0	0
○	228	NAGANO MUNI. HOSP.	6	0	4	0	0	1	0	0	0	1
	229	ST. MARIANNA UNIV. YOKOHAMA CITY SEIBU HOSP.	1	1	0	0	0	0	0	0	0	0
	230	SAGA PREF. HOSP. KOSEIKAN	11	10	0	0	0	1	0	0	0	0

A	B	C	D	E	F	G	H	I	J	K
Institution	Total No. Treated	no description	Alive with no Evidence of the Disease	Alive with Carcinoma	Alive with or without Carcinoma Unknown	Died of Carcinoma	Died of Other Malignant Tumor	Died of Intercurrent Disease	Cause of Death Unknown	Lost to follow-up
○ 231 OKINAWA PREF. CHUBU HOSP.	10	0	3	0	0	5	0	0	0	2
○ 232 TOYAMA RED CROSS HOSP.	8	0	4	0	0	4	0	0	0	0
233 HIROSHIMA PREF. HOSP.	17	12	0	0	0	3	0	0	0	2
○ 234 SHONAN KAMAKURA GENERAL HOSP.	2	0	2	0	0	0	0	0	0	0
235 UNIV. OCCUPATIONAL & ENVIRONMENTAL HEALTH	28	0	16	0	0	4	0	0	0	8
236 KOSHIGAYA MUNI. HOSP.	5	4	0	0	0	1	0	0	0	0
237 FUJITA HEALTH UMIN.	17	0	8	1	0	4	0	0	0	4
○ 238 OHITA UNIV.	19	1	13	0	0	5	0	0	0	0
○ 239 TOYOHASHI MUNI. HOSP.	35	0	25	0	0	3	0	1	0	6
240 HYOGO PREF. KAKOGAWA MED. CENTER	17	17	0	0	0	0	0	0	0	0
502 SAN-IKUKAI HOSP.	5	4	0	0	0	1	0	0	0	0
503 HACHINOHE CITY HOSP.	6	6	0	0	0	0	0	0	0	0
504 MIMURO HOSP.	3	0	1	0	0	1	0	0	0	1
506 OGAKI MUNI. HOSP.	26	25	0	0	0	1	0	0	0	0
○ 507 FUJI CITY GENERAL HOSP.	7	0	4	1	0	1	1	0	0	0
508 SAISEIKAI KYOTO HOSP.	3	3	0	0	0	0	0	0	0	0
509 JIKEI UNIV. 3RD HOSP.	8	4	0	0	0	0	0	0	2	2
510 KURE KYOSAI HOSP.	9	5	0	0	0	1	0	0	0	3
511 YOKOHAMASAKAE KYOSAI HOSP.	3	3	0	0	0	0	0	0	0	0
○ 513 KANTO ROSAI HOSP.	3	0	1	0	0	0	0	0	2	0
515 TOKAI UNIV.	20	0	5	0	0	9	0	0	0	6
○ 516 ASAHI CENTRAL HOSP.	25	0	18	0	0	4	0	0	0	3
517 YOKOHAMA MUNI. HOSP.	5	0	3	0	0	0	0	0	0	2
518 YOKOHAMA MINAMI KYOSAI HOSP.	10	0	3	0	1	3	0	0	0	3
519 KYOTO KATURA HOSP.	5	5	0	0	0	0	0	0	0	0
520 JIKEI UNIV. KASHIWA HOSP.	30	22	0	0	0	2	0	0	0	6
526 JIKEI UNIV. AOTO HOSP.	26	0	11	2	0	6	0	0	0	7
Total	4,171	1,065	1,734	73	21	578	20	28	69	583

Table 1. No. of Patients by Stage and Age

FIGO Stage	Age	No description		~19		20~29		30~39		40~49		50~59		60~69		70~79		80~		Total	
		No.	%	No.	%	No.	%	No.	%	No.	%	No.	%	No.	%	No.	%	No.	%	No.	%
I	A1	0	0.0	0	0.0	60	1.4	289	6.9	181	4.3	87	2.1	29	0.7	25	0.6	1	0.0	672	16.1
	A2	0	0.0	1	0.0	0	0.0	21	0.5	17	0.4	13	0.3	6	0.1	7	0.2	0	0.0	65	1.6
	A not cl.	0	0.0	0	0.0	5	0.1	22	0.5	29	0.7	14	0.3	5	0.1	6	0.1	2	0.1	83	2.0
	B1	0	0.0	1	0.0	40	1.0	296	7.1	256	6.1	226	5.4	150	3.6	70	1.7	27	0.7	1,066	25.6
	B2	0	0.0	0	0.0	17	0.4	69	1.7	88	2.1	64	1.5	24	0.6	15	0.4	4	0.1	281	6.7
	B not cl.	0	0.0	0	0.0	2	0.1	20	0.5	24	0.6	20	0.5	17	0.4	12	0.3	9	0.2	104	2.5
	total	0	0.0	2	0.1	124	3.0	717	17.2	595	14.3	424	10.2	231	5.5	135	3.2	43	1.0	2,271	54.5
II	A	0	0.0	0	0.0	5	0.1	49	1.2	30	0.7	63	1.5	58	1.4	41	1.0	17	0.4	263	6.3
	B	1	0.0	0	0.0	14	0.3	88	2.1	128	3.1	205	4.9	132	3.2	93	2.2	41	1.0	702	16.8
	not cl.	0	0.0	0	0.0	0	0.0	1	0.0	2	0.1	1	0.0	0	0.0	0	0.0	0	0.0	4	0.1
	total	1	0.0	0	0.0	19	0.5	138	3.3	160	3.8	269	6.5	190	4.6	134	3.2	58	1.4	969	23.2
III	A	0	0.0	0	0.0	0	0.0	1	0.0	5	0.1	7	0.2	15	0.4	14	0.3	12	0.3	54	1.3
	B	2	0.1	0	0.0	4	0.1	30	0.7	82	2.0	152	3.6	106	2.5	120	2.9	59	1.4	555	13.3
	not cl.	0	0.0	0	0.0	0	0.0	0	0.0	0	0.0	0	0.0	2	0.1	0	0.0	0	0.0	2	0.1
	total	2	0.1	0	0.0	4	0.1	31	0.7	87	2.1	159	3.8	123	3.0	134	3.2	71	1.7	611	14.7
IV	A	0	0.0	0	0.0	1	0.0	3	0.1	11	0.3	33	0.8	42	1.0	27	0.7	12	0.3	129	3.1
	B	0	0.0	0	0.0	4	0.1	20	0.5	28	0.7	46	1.1	38	0.9	28	0.7	18	0.4	182	4.4
	not cl.	0	0.0	0	0.0	0	0.0	0	0.0	2	0.1	2	0.1	1	0.0	1	0.0	3	0.1	9	0.2
	total	0	0.0	0	0.0	5	0.1	23	0.6	41	1.0	81	1.9	81	1.9	56	1.3	33	0.8	320	7.7
Total		3	0.1	2	0.1	152	3.6	909	21.8	883	21.2	933	22.4	625	15.0	459	11.0	205	4.9	4,171	100.0

Table 2. Type of Treatment

Treatment FIGO Stage		No description		Surgery															
				Alone		Rad.		Chem.Immun. Hormon		Other		Rad. Chem.Immun. Hormon		Rad. Other		Chem.Immun. Hormon, Other		Rad. Chem.Immun. Hormon, Other	
		No.	%	No.	%	No.	%	No.	%	No.	%	No.	%	No.	%	No.	%	No.	%
I	A1	12	0.3	637	15.3	7	0.2	4	0.1	0	0.0	0	0.0	0	0.0	0	0.0	0	0.0
	A2	2	0.1	59	1.4	3	0.1	1	0.0	0	0.0	0	0.0	0	0.0	0	0.0	0	0.0
	A not cl.	5	0.1	68	1.6	2	0.1	1	0.0	0	0.0	1	0.0	0	0.0	0	0.0	0	0.0
	B1	28	0.7	546	13.1	159	3.8	128	3.1	1	0.0	97	2.3	0	0.0	0	0.0	1	0.0
	B2	3	0.1	58	1.4	58	1.4	70	1.7	0	0.0	67	1.6	1	0.0	1	0.0	0	0.0
	B not cl.	0	0.0	29	0.7	24	0.6	20	0.5	0	0.0	13	0.3	0	0.0	0	0.0	0	0.0
	total	50	1.2	1,397	33.5	253	6.1	224	5.4	1	0.0	178	4.3	1	0.0	1	0.0	1	0.0
II	A	1	0.0	43	1.0	44	1.1	37	0.9	2	0.1	53	1.3	0	0.0	0	0.0	0	0.0
	B	3	0.1	43	1.0	97	2.3	115	2.8	1	0.0	187	4.5	0	0.0	1	0.0	0	0.0
	not cl.	0	0.0	0	0.0	1	0.0	1	0.0	0	0.0	0	0.0	0	0.0	0	0.0	0	0.0
	total	4	0.1	86	2.1	142	3.4	153	3.7	3	0.1	240	5.8	0	0.0	1	0.0	0	0.0
III	A	0	0.0	1	0.0	3	0.1	1	0.0	0	0.0	2	0.1	0	0.0	0	0.0	0	0.0
	B	3	0.1	2	0.1	8	0.2	29	0.7	0	0.0	50	1.2	0	0.0	0	0.0	0	0.0
	not cl.	0	0.0	0	0.0	0	0.0	0	0.0	0	0.0	0	0.0	0	0.0	0	0.0	0	0.0
	total	3	0.1	3	0.1	11	0.3	30	0.7	0	0.0	52	1.3	0	0.0	0	0.0	0	0.0
IV	A	0	0.0	1	0.0	0	0.0	4	0.1	0	0.0	4	0.1	0	0.0	0	0.0	0	0.0
	B	2	0.1	1	0.0	1	0.0	12	0.3	0	0.0	7	0.2	0	0.0	0	0.0	0	0.0
	not cl.	0	0.0	0	0.0	0	0.0	1	0.0	0	0.0	2	0.1	0	0.0	0	0.0	0	0.0
	total	2	0.1	2	0.1	1	0.0	17	0.4	0	0.0	13	0.3	0	0.0	0	0.0	0	0.0
Total		59	1.4	1,488	35.7	407	9.8	424	10.2	4	0.1	483	11.6	1	0.0	2	0.1	1	0.0

Treatment FIGO Stage		Radiation								Chem.Immun. Hormon				Others		Total	
		Alone		Chem.Immun. Hormon		Other		Chem.Immun. Hormon, Other		Alone		Other					
		No.	%	No.	%	No.	%	No.	%	No.	%	No.	%	No.	%		
I	A1	2	0.1	0	0.0	0	0.0	0	0.0	0	0.0	0	0.0	10	0.2	672	16.1
	A2	0	0.0	0	0.0	0	0.0	0	0.0	0	0.0	0	0.0	0	0.0	65	1.6
	a not cl.	4	0.1	0	0.0	0	0.0	0	0.0	0	0.0	0	0.0	2	0.1	83	2.0
	B1	91	2.2	12	0.3	0	0.0	0	0.0	3	0.1	0	0.0	0	0.0	1,066	25.6
	B2	12	0.3	11	0.3	0	0.0	0	0.0	0	0.0	0	0.0	0	0.0	281	6.7
	B not cl.	14	0.3	4	0.1	0	0.0	0	0.0	0	0.0	0	0.0	0	0.0	104	2.5
	total	123	3.0	27	0.7	0	0.0	0	0.0	3	0.1	0	0.0	12	0.3	2,271	54.5
II	A	64	1.5	18	0.4	0	0.0	0	0.0	1	0.0	0	0.0	0	0.0	263	6.3
	B	144	3.5	99	2.4	0	0.0	0	0.0	12	0.3	0	0.0	0	0.0	702	16.8
	not cl.	0	0.0	0	0.0	0	0.0	0	0.0	1	0.0	0	0.0	1	0.0	4	0.1
	total	208	5.0	117	2.8	0	0.0	0	0.0	14	0.3	0	0.0	1	0.0	969	23.2
III	A	26	0.6	19	0.5	0	0.0	0	0.0	2	0.1	0	0.0	0	0.0	54	1.3
	B	223	5.4	224	5.4	3	0.1	3	0.1	5	0.1	1	0.0	4	0.1	555	13.3
	not cl.	1	0.0	0	0.0	0	0.0	0	0.0	1	0.0	0	0.0	0	0.0	2	0.1
	total	250	6.0	243	5.8	3	0.1	3	0.1	8	0.2	1	0.0	4	0.1	611	14.7
IV	A	58	1.4	54	1.3	1	0.0	0	0.0	6	0.1	1	0.0	0	0.0	129	3.1
	B	50	1.2	74	1.8	1	0.0	0	0.0	31	0.7	0	0.0	3	0.1	182	4.4
	not cl.	4	0.1	2	0.1	0	0.0	0	0.0	0	0.0	0	0.0	0	0.0	9	0.2
	total	112	2.7	130	3.1	2	0.1	0	0.0	37	0.9	1	0.0	3	0.1	320	7.7
Total		693	16.6	517	12.4	5	0.1	3	0.1	62	1.5	2	0.1	20	0.5	4,171	100.0

Table 3. 5-Year Results, Treatment Started in 2002

5-year result	No. of patients	%
Alive with no Evidence of the Disease	1,195	67.0
Alive with Carcinoma	47	2.6
Alive with or without Carcinoma Unknown	16	0.9
Died of Carcinoma	365	20.5
Died of Other Malignant Tumor	12	0.7
Died of Intercurrent Disease	16	0.9
Cause of Death Unknown	33	1.9
Lost to follow-up	99	5.6
Total	1,783	

Table 4. 5-Year Survival by Stage, Treatment Started in 2002

FIGO Stage		Patients treated		5-year survival	
		No.		%	
I	A1	267	958	99.2	92.4
	A2	18		100.0	
	A not cl.	38		-	
	B1	502		92.1	
	B2	113		75.4	
	B not cl.	20		-	
II	A	111	415	78.0	71.7
	B	302		69.6	
	not cl.	2		-	
III	A	24	265	49.9	47.2
	B	241		47.0	
IV	A	46	145	36.6	23.3
	B	99		17.0	
Total		1,783		77.4	

Table 5. 5-Year Survival by Histological Type, Treatment Started in 2002

Histological type	Patients treated		5-year survival
	No.	%	%
Squamous carcinoma	1,307	73.3	77.0
Adenocarcinoma	342	19.2	75.0
Adenosquamous carcinoma	83	4.7	67.9
Others	47	2.6	50.4
No description	4	0.2	-

Table 6. 5-Year Survival by Stage and Histological Type, Treatment Started in 2002

FIGO Stage	Histology type	Patients treated		5-year survival
		No.	%	%
I	Squamous carcinoma	672	70.15	94.6
	Adenocarcinoma	210	21.92	91.3
	Adenosquamous carcinoma	47	4.91	74.5
	Others	27	2.82	77.8
	No description	2	0.21	-
II	Squamous carcinoma	312	75.2	75.6
	Adenocarcinoma	73	17.6	60.0
	Adenosquamous carcinoma	21	5.1	74.5
	Others	8	1.9	12.5
	No description	1	0.2	-
III	Squamous carcinoma	219	82.6	48.4
	Adenocarcinoma	35	13.2	42.9
	Adenosquamous carcinoma	9	3.4	45.0
	Others	2	0.8	0.0
	No description	0	0.0	-
IV	Squamous carcinoma	104	71.7	23.6
	Adenocarcinoma	24	16.6	25.0
	Adenosquamous carcinoma	6	4.1	16.7
	Others	10	6.9	12.5
	No description	1	0.7	-

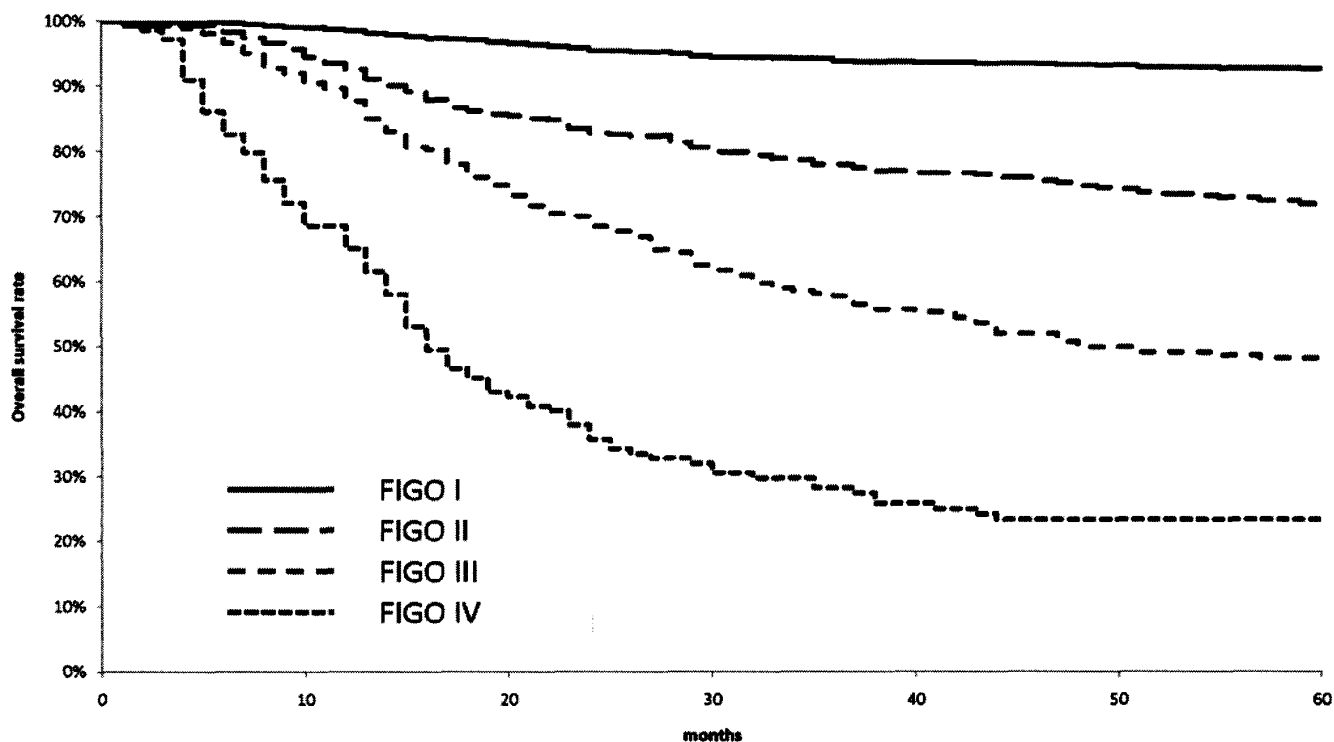
Table 7. 5-Year Survival by First Therapy, Treatment Started in 2002

FIGO Stage	Therapy	Patients treated		5-year survival
		No.	%	%
I	Surgery	789	82.4	93.1
	Radiation	78	8.1	84.0
	(Radiation alone)	(15)	(1.6)	(73.3)
	Chemotherapy	50	5.2	89.9
	Others	9	0.9	100.0
	No description	32	3.3	-
II	Surgery	172	41.5	75.8
	Radiation	154	37.1	68.9
	(Radiation alone)	(17)	(4.1)	(64.7)
	Chemotherapy	84	20.2	69.3
	Others	2	0.5	50.0
No description	3	0.7	-	
III	Surgery	7	2.6	44.4
	Radiation	200	75.5	48.5
	(Radiation alone)	(29)	(10.9)	(34.1)
	Chemotherapy	53	20.0	47.1
	Others	3	1.1	0.0
No description	2	0.8	-	
IV	Surgery	6	4.1	16.7
	Radiation	91	62.8	27.8
	(Radiation alone)	(20)	(13.8)	(14.1)
	Chemotherapy	45	31.0	16.5
	Others	1	0.7	0.0
No description	2	1.4	-	

Table 8. 5-Year Survival by TNM Classification, Treatment Started in 2002

TNM Stage			Patients treated		5-year survival
			No.	%	%
T1a1	N0	M0	253	15.1	99.2
T1a2	N0	M0	15	0.9	100.0
T1b1	N0	M0	480	28.7	93.2
T1b2	N0	M0	91	5.5	79.5
T2a	N0	M0	93	5.6	81.6
T2b	N0	M0	222	13.3	75.3
T3a	N0	M0	18	1.1	59.8
T3b	N0	M0	147	8.8	47.3
T4	N0	M0	20	1.2	41.0
T1b1	N1	M0	22	1.3	54.5
T1b2	N1	M0	22	1.3	59.1
T2a	N1	M0	12	0.7	65.6
T2b	N1	M0	63	3.8	56.3
T3a	N1	M0	4	0.2	0.0
T3b	N1	M0	71	4.3	50.6
T4	N1	M0	18	1.1	37.5
Any T	Any N	M1	122	7.3	19.6

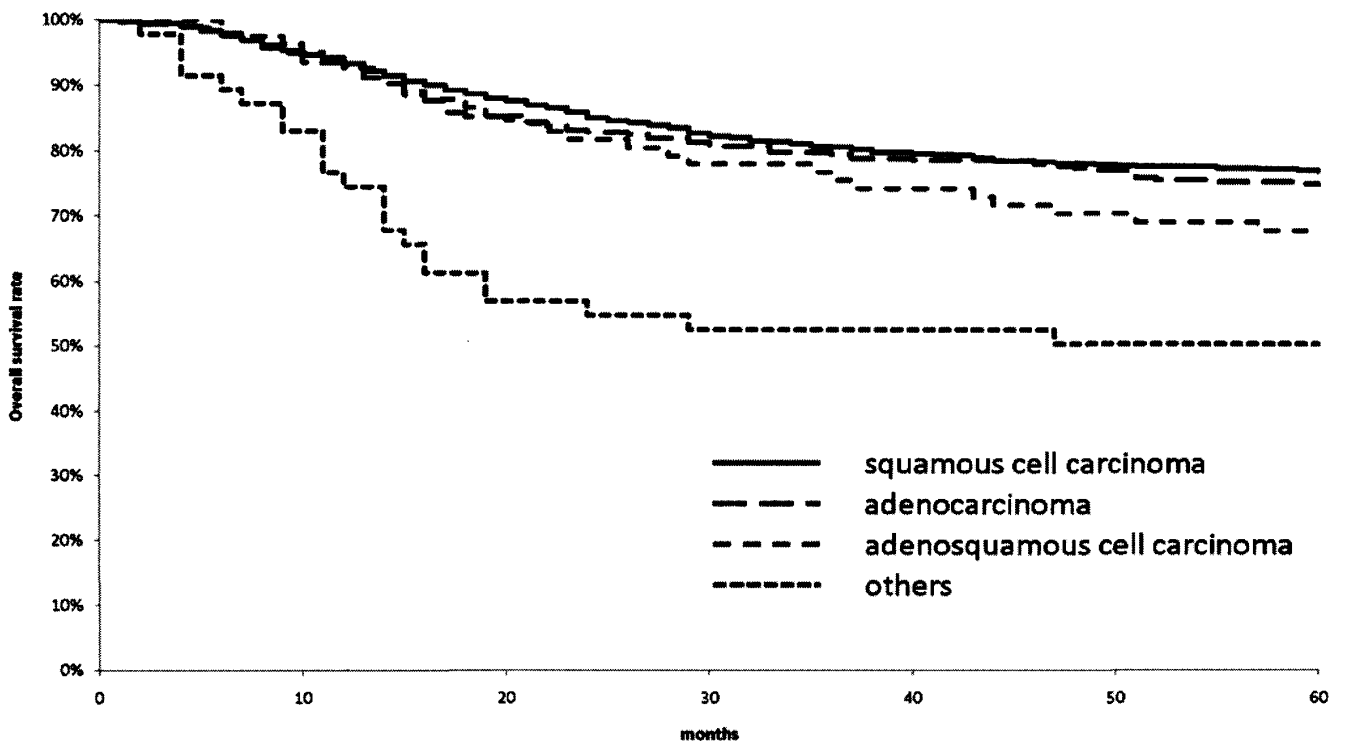
Figure 1. Kaplan-Meier Estimated Overall Survival Curves of Cervical Cancer Patients by FIGO Stage, Treatment Started in 2002



Test of Equality over Strata			
Test	Chi-Square	DF	Pr > Chi-Square
Log-rank	654.4804	3	<.0001
Wilcoxon	650.2994	3	<.0001

Adjustment for Multiple Comparisons for the Log-rank Test				
Strata Comparison		Chi-Square	p-Values	
FIGO Stage	FIGO Stage		Raw	Tukey-Kramer
I	II	134	<.0001	<.0001
I	III	326.5	<.0001	<.0001
I	IV	512.6	<.0001	<.0001
II	III	27.5656	<.0001	<.0001
II	IV	49.7283	<.0001	<.0001
III	IV	0.9122	0.3395	0.7749

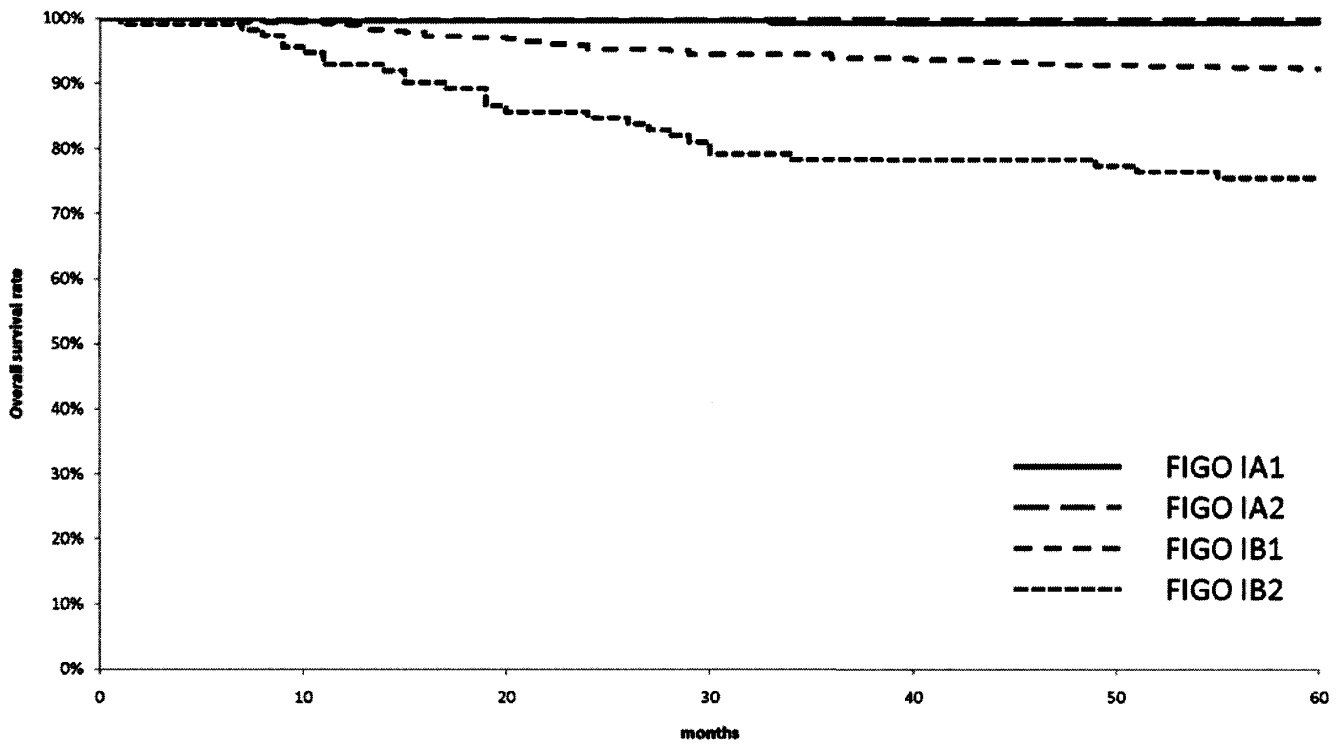
Figure 2. Kaplan-Meier Estimated Overall Survival Curves of Cervical Cancer Patients by Histological Type, Treatment Started in 2002



Test of Equality over Strata			
Test	Chi-Square	DF	Pr > Chi-Square
Log-rank	28.2153	3	<.0001
Wilcoxon	31.0807	3	<.0001

Adjustment for Multiple Comparisons for the Log-rank Test				
Strata Comparison		Chi-Square	p-Values	
Histological Type	Histological Type		Raw	Tukey-Kramer
Adenocarcinoma	Adenosquamous Carcinoma	0.2272	0.6336	0.9643
Adenocarcinoma	Others	2.0546	0.1517	0.4784
Adenocarcinoma	Squamous Carcinoma	2.2241	0.1359	0.4427
Adenosquamous Carcinoma	Others	2.3371	0.1263	0.4202
Adenosquamous Carcinoma	Squamous Carcinoma	6.5304	0.0106	0.0518
Others	Squamous Carcinoma	13.4265	0.0002	0.0014

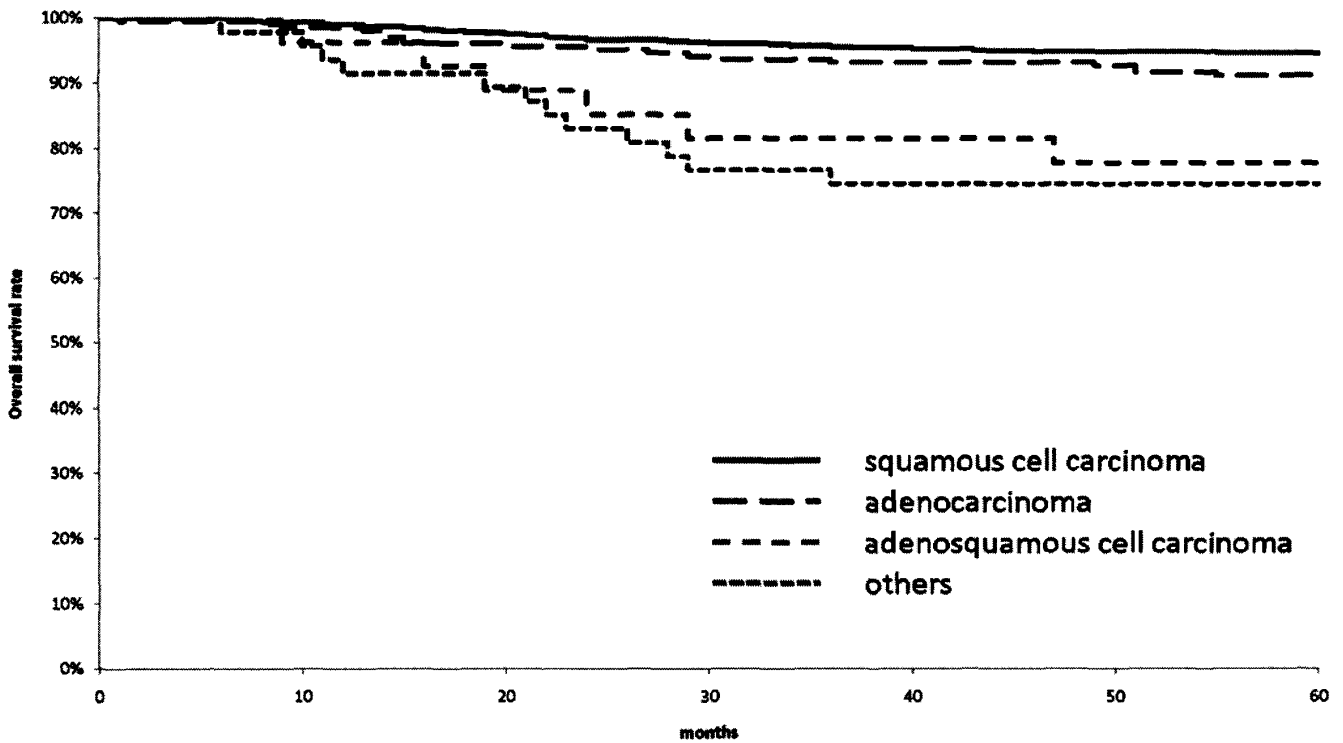
Figure 3. Kaplan-Meier Estimated Overall Survival Curves of FIGO Stage I Cervical Cancer Patients by Substage, Treatment Started in 2002



Test of Equality over Strata			
Test	Chi-Square	DF	Pr > Chi-Square
Log-rank	67.3509	3	<.0001
Wilcoxon	67.6963	3	<.0001

Adjustment for Multiple Comparisons for the Log-rank Test				
Strata Comparison		Chi-Square	p-Values	
FIGO Stage	FIGO Stage		Raw	Tukey-Kramer
1A1	1A2	17.5693	<.0001	0.0002
1A1	1B1	6.7538	0.0094	0.0462
1A1	1B2	55.8832	<.0001	<.0001
1A2	1B1	0.2127	0.6447	0.9674
1A2	1B2	50.8902	<.0001	<.0001
1B1	1B2	10.9685	0.0009	0.0051

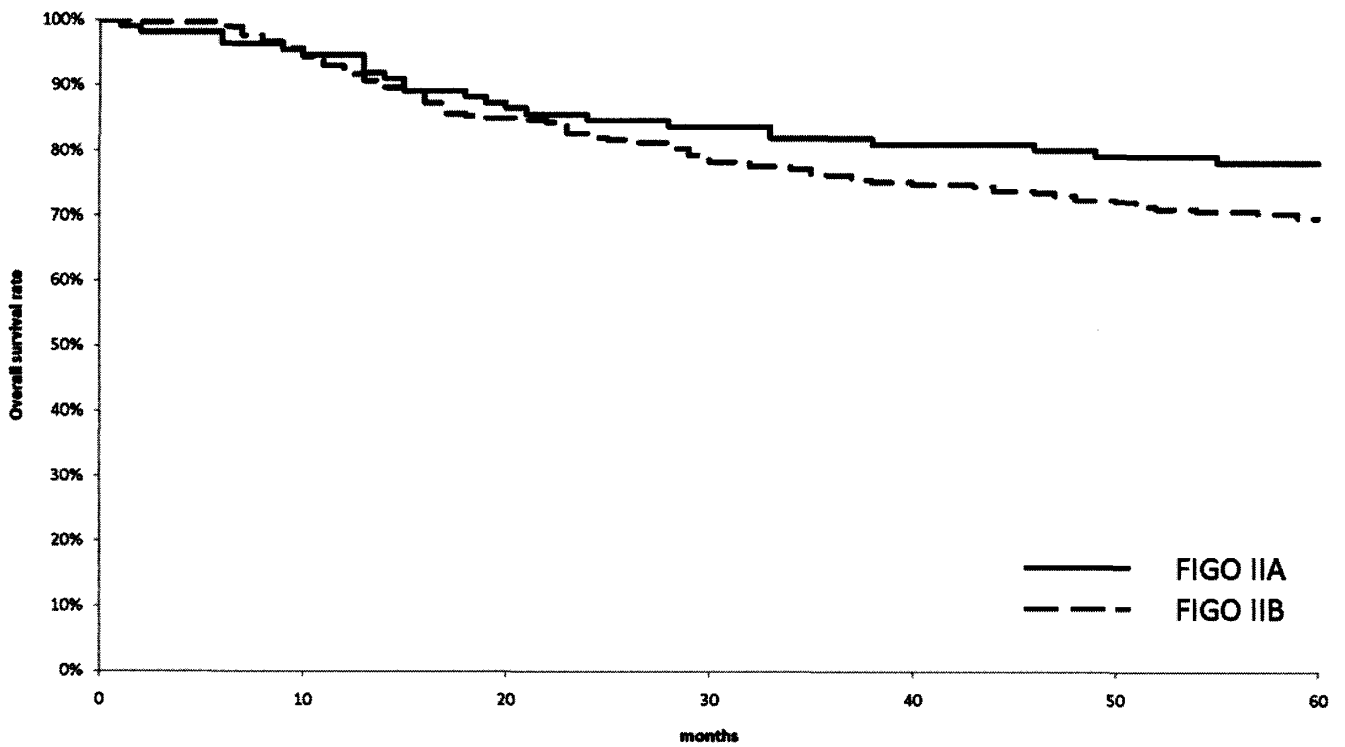
Figure 4. Kaplan-Meier Estimated Overall Survival Curves of FIGO Stage I Cervical Cancer Patients by Histological Type, Treatment Started in 2002



Test of Equality over Strata			
Test	Chi-Square	DF	Pr > Chi-Square
Log-rank	38.3038	3	<.0001
Wilcoxon	38.5821	3	<.0001

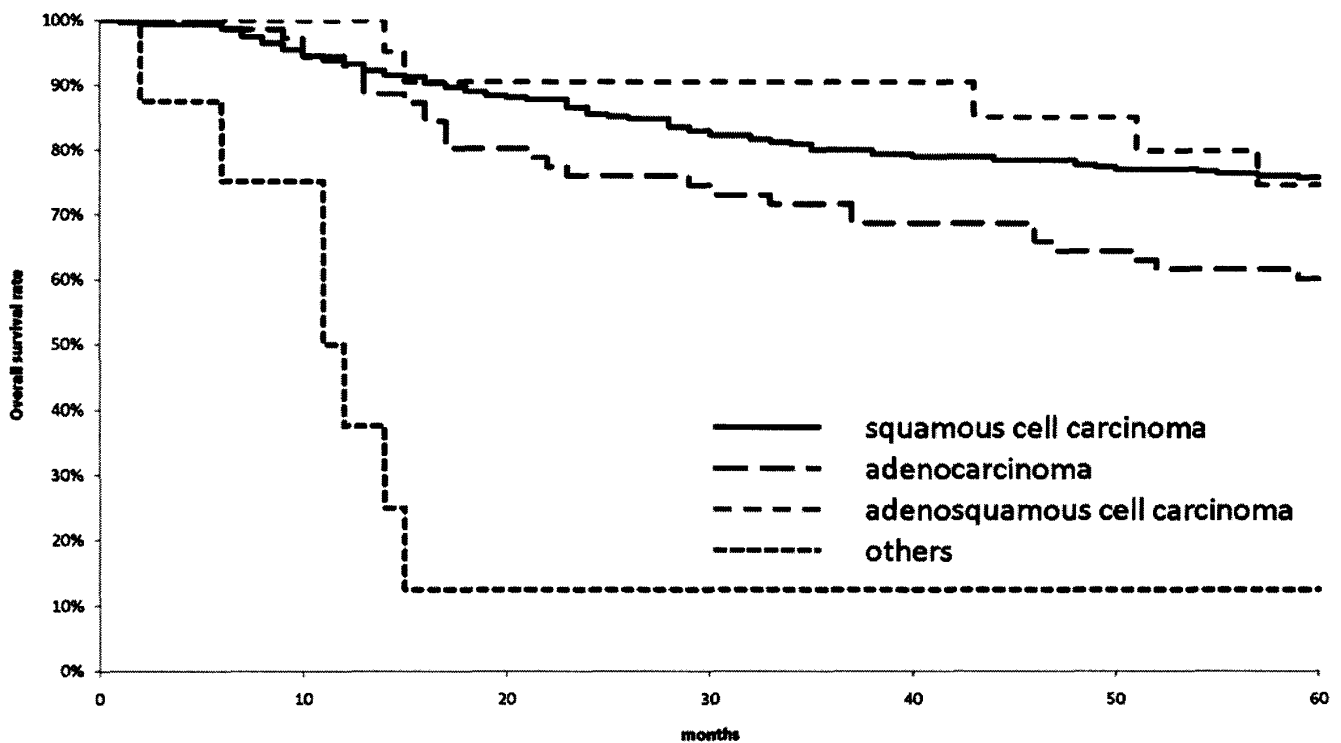
Adjustment for Multiple Comparisons for the Log-rank Test				
Strata Comparison		Chi-Square	p-Values	
Histological Type	Histological Type		Raw	Tukey-Kramer
Aenocarcinoma	Adenosquamous Carcinoma	2.4986	0.1139	0.3897
Adenocarcinoma	Others	0.1987	0.6558	0.9705
Adenocarcinoma	Squamous Carcinoma	6.3807	0.0115	0.056
Adenosquamous Carcinoma	Others	4.4095	0.0357	0.1531
Adenosquamous Carcinoma	Squamous Carcinoma	26.1972	<.0001	<.0001
Others	Squamous Carcinoma	19.5784	<.0001	<.0001

Figure 5. Kaplan-Meier Estimated Overall Survival Curves of FIGO II Cervical Cancer Patients by Substage, Treatment Started in 2002



Test of Equality over Strata			
Test	Chi-Square	DF	Pr > Chi-Square
Log-rank	2.4303	1	0.119
Wilcoxon	2.1061	1	0.1467

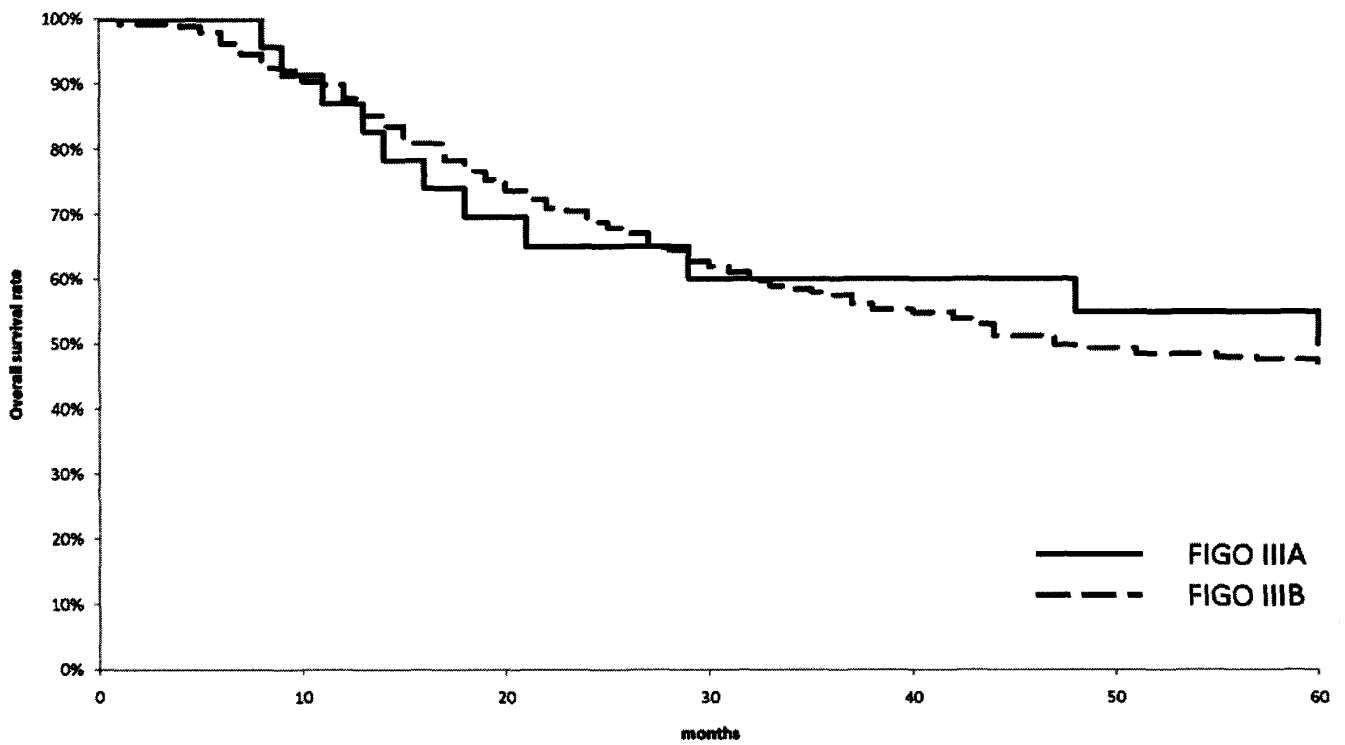
Figure 6. Kaplan-Meier Estimated Overall Survival Curves of FIGO II Cervical Cancer Patients by Histological Type, Treatment Started in 2002



Test of Equality over Strata			
Test	Chi-Square	DF	Pr > Chi-Square
Log-rank	56.4979	3	<.0001
Wilcoxon	59.5233	3	<.0001

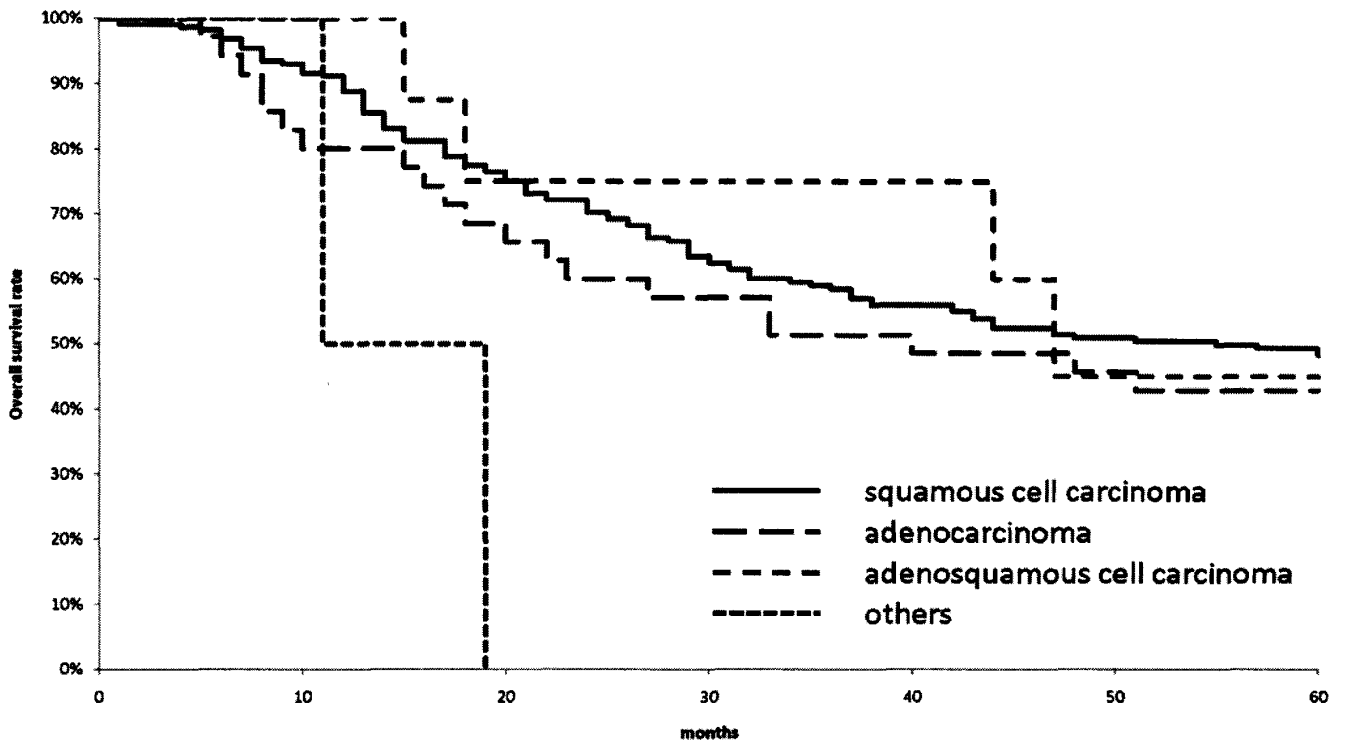
Adjustment for Multiple Comparisons for the Log-rank Test				
Strata Comparison		Chi-Square	p-Values	
Histological Type	Histological Type		Raw	Tukey-Kramer
Adenocarcinoma	Adenosquamous Carcinoma	4.5416	0.0331	0.1432
Adenocarcinoma	Others	0.5097	0.4753	0.8916
Adenocarcinoma	Squamous Carcinoma	8.3791	0.0038	0.0198
Adenosquamous Carcinoma	Others	8.2225	0.0041	0.0215
Adenosquamous Carcinoma	Squamous Carcinoma	4.7374	0.0295	0.1298
Others	Squamous Carcinoma	18.9309	<.0001	<.0001

Figure 7. Kaplan-Meier Estimated Overall Survival Curves of FIGO Stage III Cervical Cancer Patients by Substage, Treatment Started in 2002



Test of Equality over Strata			
Test	Chi-Square	DF	Pr > Chi-Square
Log-rank	0.0197	1	0.8883
Wilcoxon	0.0022	1	0.963

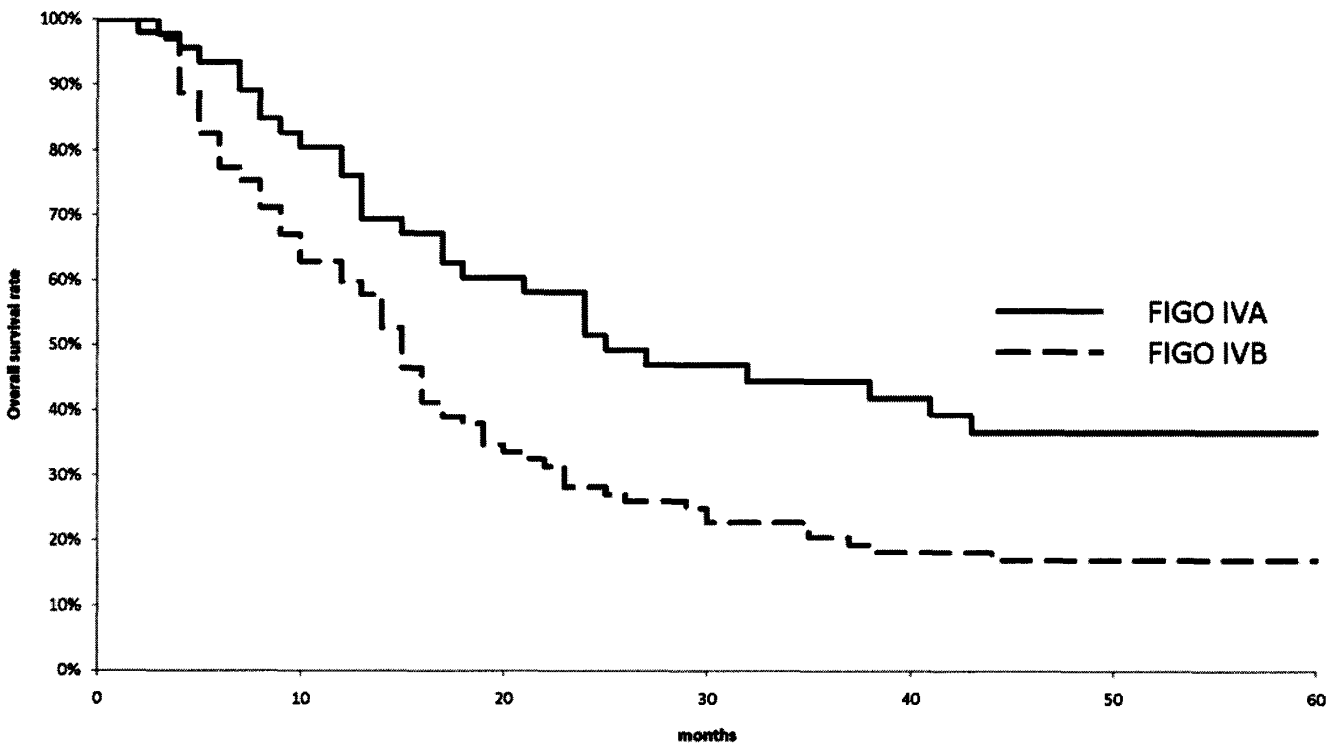
Figure 8. Kaplan-Meier Estimated Overall Survival Curves of FIGO III Cervical Cancer Patients by Histological Type, Treatment Started in 2002



Test of Equality over Strata			
Test	Chi-Square	DF	Pr > Chi-Square
Log-rank	7.3701	3	0.061
Wilcoxon	6.547	3	0.0878

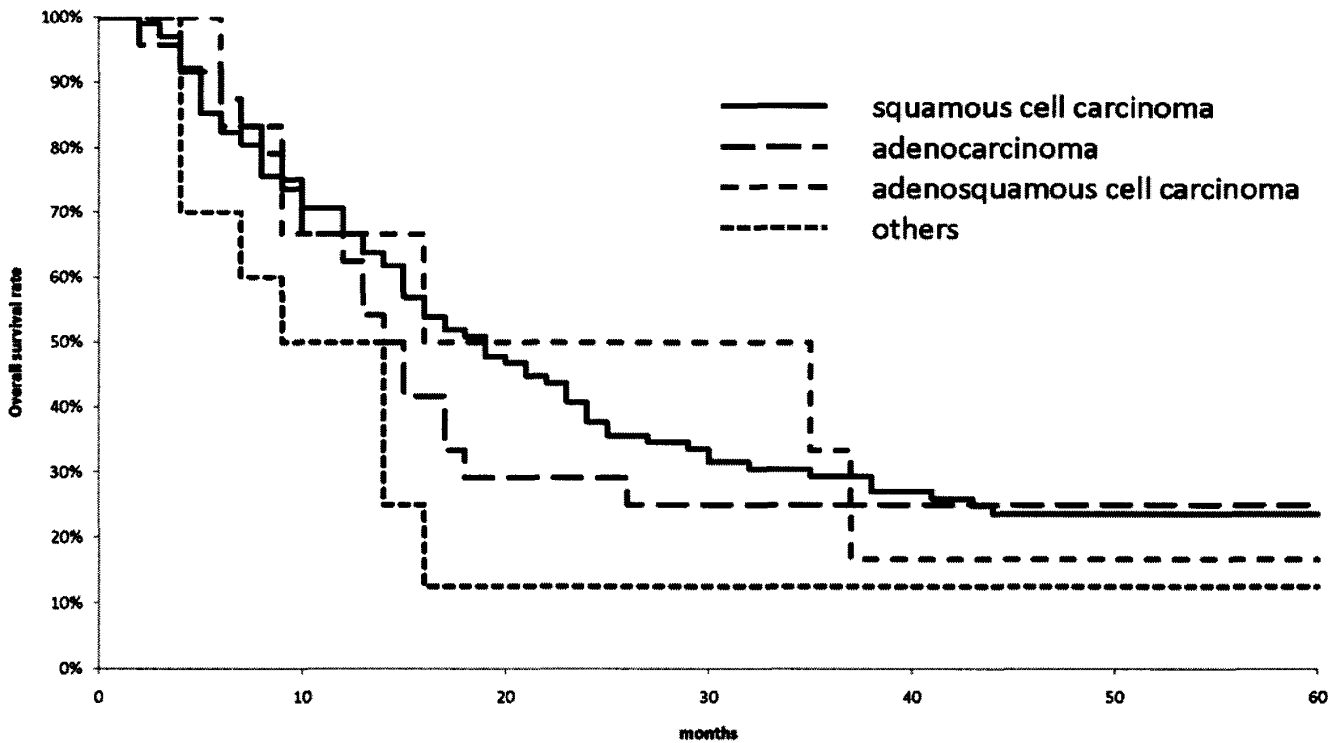
Adjustment for Multiple Comparisons for the Log-rank Test				
Strata Comparison		Chi-Square	p-Values	
Histological Type	Histological Type		Raw	Tukey-Kramer
Adenocarcinoma	Adenosquamous Carcinoma	0.6562	0.4179	0.8497
Adenocarcinoma	Others	0.1278	0.7208	0.9844
Adenocarcinoma	Squamous Carcinoma	0.7932	0.3731	0.8097
Adenosquamous Carcinoma	Others	1.0494	0.3057	0.7351
Adenosquamous Carcinoma	Squamous Carcinoma	0.3603	0.5484	0.932
Others	Squamous Carcinoma	1.6073	0.2049	0.5835

Figure 9. Kaplan-Meier Estimated Overall Survival Curves of FIGO Stage IV Cervical Cancer Patients by Substage, Treatment Started in 2002



Test of Equality over Strata			
Test	Chi-Square	DF	Pr > Chi-Square
Log-rank	8.2834	1	0.004
Wilcoxon	8.1313	1	0.0044

Figure 10. Kaplan-Meier Estimated Overall Survival Curves of FIGO Stage IV Cervical Cancer Patients by Histological Type, Treatment Started in 2002



Test of Equality over Strata			
Test	Chi-Square	DF	Pr > Chi-Square
Log-rank	3.3007	3	0.3475
Wilcoxon	4.3857	3	0.2227

Adjustment for Multiple Comparisons for the Log-rank Test				
Strata Comparison		Chi-Square	p-Values	
Histological Type	Histological Type		Raw	Tukey-Kramer
Adenocarcinoma	Adenosquamous Carcinoma	0.0675	0.795	0.9939
Adenocarcinoma	Others	0.3403	0.5597	0.9371
Adenocarcinoma	Squamous Carcinoma	0.5047	0.4775	0.893
Adenosquamous Carcinoma	Others	1.5055	0.2198	0.6096
Adenosquamous Carcinoma	Squamous Carcinoma	0.567	0.4515	0.8754
Others	Squamous Carcinoma	2.133	0.1442	0.4616

子宮体癌治療成績

Statement for the Year 2002, Inclusive, Corpus

Table A. 5-Year Results, Stage I-IV

	A	B	C	D	E	F	G	H	I	J	K
	Institution	Total No. Treated	no description	Alive with no Evidence of the Disease	Alive with Carcinoma	Alive with or without Carcinoma Unknown	Died of Carcinoma	Died of Other Malignant Tumor	Died of Intercurrent Disease	Cause of Death Unknown	Lost to follow-up
	1 KOBE UNIV.	10	10	0	0	0	0	0	0	0	0
○	3 TOHOKU UNIV.	35	0	23	4	1	4	1	1	0	1
	4 FUKUSHIMA MED. UNIV.	28	28	0	0	0	0	0	0	0	0
	5 KANAZAWA UNIV.	12	0	7	0	0	2	0	0	0	3
○	6 OSAKA NATIONAL HOSP.	43	0	30	0	1	1	0	0	5	6
○	7 GIFU UNIV.	14	0	11	0	0	2	0	0	0	1
	8 SHINSHU UNIV.	14	14	0	0	0	0	0	0	0	0
	9 NIPPON MED. SCH.	15	15	0	0	0	0	0	0	0	0
○	10 NAGASAKI UNIV.	16	0	11	0	0	4	0	1	0	0
○	11 RED CROSS MED. CENTER	10	0	8	0	0	1	0	0	0	1
○	12 KUMAMOTO UNIV.	30	0	25	1	0	3	0	0	1	0
○	15 KEIO UNIV.	52	0	36	2	1	4	1	0	0	8
	16 KYUSHU UNIV.	29	0	17	0	1	3	0	0	0	8
	17 TOKYO UNIV.	31	27	0	0	0	2	0	0	0	2
	18 JIKEI UNIV.	17	17	0	0	0	0	0	0	0	0
	19 CANCER INST. HOSP.	71	0	48	0	1	2	1	0	0	19
○	20 KYOTO UNIV.	22	0	16	0	1	3	0	0	0	2
	21 NIIGATA UNIV.	31	31	0	0	0	0	0	0	0	0
	22 OKAYAMA UNIV.	28	25	0	0	0	2	0	0	0	1
	23 HIROSHIMA RED CROSS HOSP.	8	8	0	0	0	0	0	0	0	0
	24 OSAKA CITY UNIV.	26	25	0	0	0	1	0	0	0	0
○	25 HIROSAKI UNIV.	8	0	6	2	0	0	0	0	0	0
○	26 SENDAI MED. CENTER	24	0	21	0	2	1	0	0	0	0
○	27 KURUME UNIV.	25	0	19	0	0	5	0	0	0	1
○	29 JUNTENDO UNIV.	29	0	27	0	0	1	0	0	0	1
○	32 KAGOSHIMA UNIV.	20	0	13	0	0	3	0	1	0	3
○	33 HOKKAIDO UNIV.	21	0	15	1	0	2	0	0	0	3
	34 TOKYO MED. DENT. UNIV.	17	13	0	0	0	4	0	0	0	0
○	35 MIYAZAKI PREF. HOSP.	15	0	12	0	0	1	0	0	0	2
	40 MITUI MEMORIAL HOSP.	18	15	0	0	0	3	0	0	0	0
	41 SAPPORO MED. UNIV.	28	0	16	0	0	1	0	0	0	11
○	42 WAKAYAMA RED CROSS HOSP.	23	0	19	0	0	0	0	0	0	4
	44 OSAKA UNIV.	29	28	0	0	0	1	0	0	0	0
○	47 NAGOYA UNIV.	15	0	9	1	1	1	0	0	0	3
○	48 NAGOYA CITY UNIV.	10	0	7	0	0	1	0	0	0	2
○	49 KURASHIKI CENTRAL HOSP.	13	0	10	0	1	1	0	0	0	1
	50 OKAYAMA RED CROSS HOSP.	12	10	0	0	0	2	0	0	0	0
○	56 MIE UNIV.	16	0	9	1	0	0	0	1	2	3
	57 KANAZAWA MED. CENTER	12	10	0	0	0	2	0	0	0	0
○	58 NTT MED. CENTER TOKYO	13	0	11	0	0	2	0	0	0	0
○	59 KOBE CITY MED. CENTER GENERAL HOSP.	17	0	13	0	0	1	1	0	0	2
○	61 YOKOHAMA CITY UNIV.	22	0	17	0	0	4	0	0	0	1
○	63 TOTTORI UNIV.	25	0	18	2	0	4	0	0	0	1
	67 HIROSHIMA UNIV.	15	15	0	0	0	0	0	0	0	0
○	68 YAMAGUCHI UNIV.	12	0	8	0	0	2	0	0	0	2
	69 TOYOOKA PUBLIC HOSP.	7	0	5	0	0	0	0	0	0	2
○	70 GUNMA UNIV.	19	0	15	0	0	3	1	0	0	0
	77 CHIBA UNIV.	28	0	17	0	0	4	0	1	0	6
	79 KANSAI MED. UNIV.	13	0	4	0	0	1	0	0	0	8
○	80 KAWASAKI MED. SCH. KAWASAKI HOSP.	2	0	2	0	0	0	0	0	0	0
	82 YAMAGUCHI RED CROSS HOSP.	5	0	2	0	0	0	0	0	0	3

	A	B	C	D	E	F	G	H	I	J	K
	Institution	Total No. Treated	no description	Alive with no Evidence of the Disease	Alive with Carcinoma	Alive with or without Carcinoma Unknown	Died of Carcinoma	Died of Other Malignant Tumor	Died of Intercurrent Disease	Cause of Death Unknown	Lost to follow-up
	84 NIPPON MED. SCH. MUSASHI KOSUGI HOSP.	13	12	0	0	0	1	0	0	0	0
	85 NAGOYA MED. CENTER	24	13	0	0	0	0	0	0	0	11
	89 NIHON UNIV.	24	0	11	0	0	5	0	0	0	8
○	90 RED CROSS NAGOYA DAIICHI HOSP.	20	0	15	1	1	3	0	0	0	0
	92 NATIONAL CENTER FOR GLOBAL HEALTH AND MED.	11	10	0	0	0	1	0	0	0	0
○	94 KUMAMOTO MED. CENTER	22	0	19	0	0	0	0	0	3	0
○	95 NARA MED. UNIV.	10	0	7	0	0	1	0	0	0	2
○	96 OSAKA MED. COLL.	34	0	21	0	0	7	0	0	0	6
	97 KYUSHU UNIV. SEIKEN	11	10	0	0	0	1	0	0	0	0
	100 YAMANASHI PREF. CENTRAL HOSP.	17	14	0	0	0	0	0	1	0	2
○	101 NATIONAL CANCER CENTER	77	0	66	1	0	9	0	1	0	0
○	102 SHIZUOKA GENERAL HOSP.	17	0	15	0	0	0	1	0	0	1
○	103 OSAKA MED. CENTER FOR CANCER AND CVD	27	0	22	2	0	2	0	0	0	1
	105 OKAYAMA SAISEIKAI GENERAL HOSP.	6	5	0	0	0	1	0	0	0	0
	109 FUKUI RED CROSS HOSP.	8	0	3	1	0	2	0	0	0	2
	110 OSAKA POLICE HOSP.	15	0	8	0	0	3	0	0	0	4
○	111 HYOGO CANCER CENTER	57	0	45	1	0	10	0	0	0	1
	114 KYUSHU MED. CENTER	10	10	0	0	0	0	0	0	0	0
○	116 AICHI CANCER CENTER	51	0	42	2	0	7	0	0	0	0
○	117 KANAGAWA CANCER CENTER	52	0	43	0	0	8	0	1	0	0
○	118 OITA PREF. HOSP.	17	0	12	1	0	2	0	1	0	1
	119 TOYAMA PREF. CENTRAL HOSP.	13	13	0	0	0	0	0	0	0	0
○	120 TOKUSHIMA UNIV.	13	0	10	0	0	2	0	0	0	1
○	121 SHOWA UNIV.	17	0	13	0	0	3	0	0	0	1
○	122 NIIGATA CANCER CENTER HOSP.	16	0	14	0	0	2	0	0	0	0
	123 HIROSHIMA CITY HOSP.	19	0	11	0	0	0	0	0	0	8
○	125 YAMAGATA PREF. CENTRAL HOSP.	10	0	9	0	0	1	0	0	0	0
	126 WAKAYAMA MED. UNIV.	19	0	12	0	0	3	0	0	0	4
○	127 TAKAMATSU RED CROSS HOSP.	11	0	8	0	0	2	0	0	0	1
	129 KAGOSHIMA CITY HOSP.	45	45	0	0	0	0	0	0	0	0
○	130 FUKUYAMA MED. CENTER	18	0	12	0	1	4	0	0	0	1
○	132 SHIKOKU CANCER CENTER	50	0	42	2	0	4	0	0	0	2
	133 KAWASAKI MUNI. HOSP.	23	21	0	0	0	2	0	0	0	0
○	136 ONOMICHI GENERAL HOSP.	10	0	10	0	0	0	0	0	0	0
	137 KUMAMOTO CITY HOSP.	11	8	0	0	0	2	0	0	0	1
	139 KYOONDO HOSP.	9	0	5	0	0	0	0	0	0	4
	140 KYUSHU KOSEINENKIN HOSP.	22	22	0	0	0	0	0	0	0	0
○	141 KURE MED. CENTER	20	0	14	0	0	2	0	0	0	4
○	143 GUNMA PREF. CANCER CENTER	32	0	21	1	0	3	1	0	0	6
	144 TOKUSHIMA PREF. CENTRAL HOSP.	4	0	2	0	0	0	0	0	0	2
○	145 FUKUOKA UNIV.	31	0	22	1	1	4	0	1	0	2
○	146 TENRI HOSP.	20	0	11	1	0	4	0	0	1	3
○	147 KASUMIGAUURA MED. CENTER	7	0	7	0	0	0	0	0	0	0
○	148 CHIBA CANCER CENTER	22	0	16	1	2	1	0	0	0	2
○	149 KYUSHU CANCER CENTER	33	0	29	0	0	4	0	0	0	0
○	150 NAGANO RED CROSS HOSP.	15	0	15	0	0	0	0	0	0	0
○	152 KANAZAWA MED. UNIV.	8	0	6	0	0	1	0	0	0	1
	153 NATIONAL INS. OF RADIOLOGICAL SCIENCES	4	0	1	0	0	2	0	0	0	1
○	154 RYUKYU UNIV.	41	1	33	1	0	4	2	0	0	0
	155 KOCHI MUNI. HOSP.	5	0	3	0	0	0	0	0	0	2
○	157 SAITAMA CANCER CENTER	68	0	53	1	0	12	0	0	0	2
	158 KINKI UNIV.	22	20	0	0	0	2	0	0	0	0
	159 RED CROSS NAGASAKI ATOMIC BOMB HOSP.	11	9	0	0	0	2	0	0	0	0
	160 HIMEJI RED CROSS HOSP.	17	17	0	0	0	0	0	0	0	0
○	161 TOKYO METRO. KOMAGOME HOSP.	25	0	19	1	1	3	0	1	0	0
	163 JICHI MED. UNIV.	18	0	12	0	0	1	0	1	0	4

	A	B	C	D	E	F	G	H	I	J	K
	Institution	Total No. Treated	no description	Alive with no Evidence of the Disease	Alive with Carcinoma	Alive with or without Carcinoma Unknown	Died of Carcinoma	Died of Other Malignant Tumor	Died of Intercurrent Disease	Cause of Death Unknown	Lost to follow-up
○	228 NAGANO MUNI. HOSP.	5	0	3	0	1	1	0	0	0	0
	229 ST. MARIANNA UNIV. YOKOHAMA CITY SEIBU HOSP.	4	4	0	0	0	0	0	0	0	0
	230 SAGA PREF. HOSP. KOSEIKAN	8	6	0	0	0	1	0	1	0	0
○	231 OKINAWA PREF. CHUBU HOSP.	8	0	6	0	0	1	0	0	0	1
○	232 TOYAMA RED CROSS HOSP.	11	0	5	0	0	4	0	1	0	1
	233 HIROSHIMA PREF. HOSP.	18	14	0	0	0	2	0	0	0	2
○	234 SHONAN KAMAKURA GENERAL HOSP.	3	0	2	0	0	1	0	0	0	0
○	235 UNIV. OCCUPATIONAL & ENVIRONMENTAL HEALTH	12	0	8	0	0	1	0	1	0	2
	236 KOSHIGAYA MUNI. HOSP.	21	18	0	0	0	3	0	0	0	0
○	237 FUJITA HEALTH UMIN.	12	0	9	0	0	2	0	0	0	1
○	238 OHITA UNIV.	6	0	4	0	0	2	0	0	0	0
○	239 TOYOHASHI MUNI. HOSP.	19	0	14	0	0	1	1	0	0	3
	240 HYOGO PREF. KAKOGAWA MED. CENTER	19	19	0	0	0	0	0	0	0	0
	502 SAN-IKUKAI HOSP.	4	4	0	0	0	0	0	0	0	0
	503 HACHINOHE CITY HOSP.	15	15	0	0	0	0	0	0	0	0
	504 MIMURO HOSP.	3	0	1	0	0	0	0	0	0	2
	506 OGAKI MUNI. HOSP.	11	11	0	0	0	0	0	0	0	0
	507 FUJI CITY GENERAL HOSP.	8	0	6	0	0	0	0	0	0	2
	508 SAISEIKAI KYOTO HOSP.	3	3	0	0	0	0	0	0	0	0
	509 JIKEI UNIV. 3RD HOSP.	11	7	0	0	0	1	0	0	0	3
	510 KURE KYOSAI HOSP.	8	8	0	0	0	0	0	0	0	0
	511 YOKOHAMASAKAE KYOSAI HOSP.	9	7	0	0	0	1	1	0	0	0
	513 KANTO ROSAI HOSP.	6	0	2	0	1	1	0	0	0	2
○	515 TOKAI UNIV.	9	0	7	1	0	0	0	0	0	1
○	516 ASAHI CENTRAL HOSP.	18	0	14	0	0	2	0	0	0	2
○	517 YOKOHAMA MUNI. HOSP.	7	0	5	0	0	2	0	0	0	0
○	518 YOKOHAMA MINAMI KYOSAI HOSP.	12	0	7	0	0	4	0	0	0	1
	519 KYOTO KATURA HOSP.	5	4	0	0	0	1	0	0	0	0
	520 JIKEI UNIV. KASHIWA HOSP.	36	25	0	0	0	3	0	0	0	8
	525 YAMATO CITY HOSP.	6	3	0	0	0	2	0	0	0	1
○	526 JIKEI UNIV. AOTO HOSP.	27	0	20	1	0	2	0	0	0	4
	Total	3,374	959	1,660	44	25	324	11	22	18	311

Table 1. No. of Patients by Stage and Age

FIGO Stage	Age	No description		~19		20~29		30~39		40~49		50~59		60~69		70~79		80~		Total	
		No.	%	No.	%	No.	%	No.	%	No.	%	No.	%	No.	%	No.	%	No.	%	No.	%
I	A	0	0.0	0	0.0	19	0.6	65	1.9	144	4.3	277	8.2	97	2.9	62	1.8	11	0.3	675	20.0
	B	0	0.0	0	0.0	3	0.1	61	1.8	130	3.9	438	13.0	295	8.7	124	3.7	16	0.5	1,067	31.6
	C	0	0.0	0	0.0	0	0.0	6	0.2	26	0.8	134	4.0	154	4.6	97	2.9	18	0.5	435	12.9
	not cl.	0	0.0	0	0.0	0	0.0	2	0.1	3	0.1	2	0.1	1	0.0	1	0.0	0	0.0	9	0.3
	total	0	0.0	0	0.0	22	0.7	134	4.0	303	9.0	851	25.2	547	16.2	284	8.4	45	1.3	2,186	64.8
II	A	0	0.0	0	0.0	2	0.1	8	0.2	21	0.6	36	1.1	12	0.4	19	0.6	3	0.1	101	3.0
	B	0	0.0	0	0.0	1	0.0	7	0.2	25	0.7	63	1.9	42	1.2	29	0.9	5	0.2	172	5.1
	not cl.	0	0.0	0	0.0	1	0.0	0	0.0	2	0.1	1	0.0	0	0.0	5	0.2	1	0.0	10	0.3
	total	0	0.0	0	0.0	4	0.1	15	0.4	48	1.4	100	3.0	54	1.6	53	1.6	9	0.3	283	8.4
	A	0	0.0	0	0.0	4	0.1	15	0.4	47	1.4	134	4.0	82	2.4	41	1.2	8	0.2	331	9.8
B	0	0.0	0	0.0	0	0.0	3	0.1	3	0.1	6	0.2	5	0.2	6	0.2	0	0.0	23	0.7	
C	0	0.0	0	0.0	3	0.1	16	0.5	38	1.1	138	4.1	89	2.6	43	1.3	3	0.1	330	9.8	
not cl.	1	0.0	0	0.0	0	0.0	2	0.1	2	0.1	10	0.3	12	0.4	8	0.2	0	0.0	35	1.0	
total	1	0.0	0	0.0	7	0.2	36	1.1	90	2.7	288	8.5	188	5.6	98	2.9	11	0.3	719	21.3	
IV	A	0	0.0	0	0.0	0	0.0	0	0.0	1	0.0	12	0.4	7	0.2	1	0.0	1	0.0	22	0.7
	B	0	0.0	0	0.0	1	0.0	7	0.2	20	0.6	60	1.8	45	1.3	18	0.5	5	0.2	156	4.6
	not cl.	0	0.0	0	0.0	0	0.0	1	0.0	1	0.0	3	0.1	1	0.0	1	0.0	1	0.0	8	0.2
	total	0	0.0	0	0.0	1	0.0	8	0.2	22	0.7	75	2.2	53	1.6	20	0.6	7	0.2	186	5.5
	Total	1	0.0	0	0.0	34	1.0	193	5.7	463	13.7	1,314	38.9	842	25.0	455	13.5	72	2.1	3,374	100.0

Table 2. Type of Treatment

FIGO Stage	Treatment	No description		Surgery										Radiation				Chem.Immun. Hormon				Others		Total					
				Alone		Rad.		Chem.Immun. Hormon		Other		Rad. Chem.Immun. Hormon		Chem.Immun. Hormon, Other		Alone		Chem.Immun. Hormon		Alone						Other			
		No.	%	No.	%	No.	%	No.	%	No.	%	No.	%	No.	%	No.	%	No.	%	No.	%	No.	%	No.	%	No.	%		
I	A	4	0.1	560	16.6	12	0.4	53	1.6	0	0.0	0	0.0	0	0.0	12	0.4	0	0.0	26	0.8	4	0.1	4	0.1	4	0.1	675	20.0
	B	5	0.2	827	24.5	39	1.2	188	5.6	0	0.0	2	0.1	0	0.0	3	0.1	2	0.1	1	0.0	0	0.0	0	0.0	0	0.0	1,067	31.6
	C	4	0.1	152	4.5	72	2.1	200	5.9	0	0.0	7	0.2	0	0.0	0	0.0	0	0.0	0	0.0	0	0.0	0	0.0	0	0.0	435	12.9
	not cl.	0	0.0	5	0.2	0	0.0	2	0.1	0	0.0	0	0.0	0	0.0	1	0.0	0	0.0	1	0.0	0	0.0	0	0.0	0	0.0	9	0.3
	total	13	0.4	1,544	45.8	123	3.7	443	13.1	0	0.0	9	0.3	0	0.0	16	0.5	2	0.1	28	0.8	4	0.1	4	0.1	4	0.1	2,186	64.8
II	A	1	0.0	57	1.7	12	0.4	28	0.8	0	0.0	3	0.1	0	0.0	0	0.0	0	0.0	0	0.0	0	0.0	0	0.0	0	0.0	101	3.0
	B	1	0.0	63	1.9	36	1.1	68	2.0	0	0.0	3	0.1	0	0.0	1	0.0	0	0.0	0	0.0	0	0.0	0	0.0	0	0.0	172	5.1
	not cl.	0	0.0	2	0.1	0	0.0	2	0.1	0	0.0	0	0.0	0	0.0	2	0.1	3	0.1	1	0.0	0	0.0	0	0.0	0	0.0	10	0.3
	total	2	0.1	122	3.6	48	1.4	98	2.9	0	0.0	6	0.2	0	0.0	3	0.1	3	0.1	1	0.0	0	0.0	0	0.0	0	0.0	283	8.4
	A	3	0.1	76	2.3	32	1.0	205	6.1	0	0.0	15	0.4	0	0.0	0	0.0	0	0.0	0	0.0	0	0.0	0	0.0	0	0.0	331	9.8
B	1	0.0	0	0.0	5	0.2	11	0.3	0	0.0	3	0.1	1	0.0	0	0.0	1	0.0	1	0.0	0	0.0	0	0.0	0	0.0	23	0.7	
C	3	0.1	37	1.1	44	1.3	185	5.5	1	0.0	59	1.8	0	0.0	0	0.0	1	0.0	0	0.0	0	0.0	0	0.0	0	0.0	330	9.8	
not cl.	0	0.0	3	0.1	0	0.0	14	0.4	0	0.0	5	0.2	2	0.1	3	0.1	4	0.1	3	0.1	0	0.0	1	0.0	1	0.0	35	1.0	
total	7	0.2	116	3.4	81	2.4	415	12.3	1	0.0	82	2.4	3	0.1	3	0.1	6	0.2	4	0.1	0	0.0	1	0.0	1	0.0	719	21.3	
IV	A	1	0.0	4	0.1	2	0.1	11	0.3	0	0.0	3	0.1	0	0.0	0	0.0	0	0.0	1	0.0	0	0.0	0	0.0	0	0.0	22	0.7
	B	0	0.0	13	0.4	4	0.1	98	2.9	0	0.0	15	0.4	1	0.0	3	0.1	5	0.2	16	0.5	0	0.0	1	0.0	1	0.0	156	4.6
	not cl.	0	0.0	0	0.0	0	0.0	4	0.1	0	0.0	0	0.0	0	0.0	2	0.1	0	0.0	2	0.1	0	0.0	0	0.0	0	0.0	8	0.2
	total	1	0.0	17	0.5	6	0.2	113	3.4	0	0.0	18	0.5	1	0.0	5	0.2	5	0.2	19	0.6	0	0.0	1	0.0	1	0.0	186	5.5
	Total	23	0.7	1,799	53.3	258	7.7	1,069	31.7	1	0.0	115	3.4	4	0.1	27	0.8	16	0.5	52	1.5	4	0.1	6	0.2	6	0.2	3,374	100.0

Table 3. 5-Year Results, Treatment Started in 2002

5-year result	No. of patients	%
Alive with no Evidence of the Disease	1,379	77.5
Alive with Carcinoma	40	2.3
Alive with or without Carcinoma Unknown	20	1.1
Died of Carcinoma	216	12.1
Died of Other Malignant Tumor	9	0.5
Died of Intercurrent Disease	15	0.8
Cause of Death Unknown	10	0.6
Lost to follow-up	91	5.1
Total	1,780	

Table 4. 5-Year Survival by Stage, Treatment Started in 2002

FIGO Stage		Patients treated		5-year survival	
		No.		%	
I	A	349	1,134	97.1	95.9
	B	564		96.0	
	C	218		93.7	
	not cl.	3		-	
II	A	48	140	93.4	93.3
	B	88		93.0	
	not cl.	4		-	
III	A	189	404	81.6	69.8
	B	11		36.4	
	C	183		64.0	
	not cl.	21		-	
IV	A	11	102	18.2	23.3
	B	86		23.0	
	not cl.	5		-	
Total		1,780		85.6	

Table 5. 5-Year Survival by Stage and Histological Type, Treatment Started in 2002

FIGO Stage	Histology	Patients treated		5-year survival
		No.	%	%
I	Endometrioid type	990	87.3	97.3
	Serous, Mucinous, Clear cell type	34	3.0	90.5
	Others	82	7.2	96.3
	No description	28	2.5	-
II	Endometrioid type	113	80.7	95.4
	Serous, Mucinous, Clear cell type	9	6.4	77.8
	Others	16	11.4	93.8
	No description	2	1.4	-
III	Endometrioid type	297	73.5	74.6
	Serous, Mucinous, Clear cell type	40	9.9	63.5
	Others	36	8.9	67.8
	No description	31	7.7	-
IV	Endometrioid type	59	57.8	26.9
	Serous, Mucinous, Clear cell type	11	10.8	27.3
	Others	17	16.7	17.6
	No description	15	14.7	-

Table 6. 5-Year Survival by Stage and Grade, Treatment Started in 2002

FIGO Stage	Grade	Patients treated		5-year survival
		No.	%	%
I	Grade 1	699	61.6	98.1
	Grade 2	265	23.4	96.5
	Grade 3	95	8.4	90.2
	Not Graded	75	6.6	80.4
II	Grade 1	72	51.4	97.0
	Grade 2	35	25.0	88.1
	Grade 3	22	15.7	90.9
	Not Graded	11	7.9	90.9
III	Grade 1	123	30.5	88.2
	Grade 2	152	37.6	73.7
	Grade 3	68	16.8	46.3
	Not Graded	61	15.1	49.2
IV	Grade 1	13	12.8	53.8
	Grade 2	16	15.7	21.4
	Grade 3	36	35.3	13.9
	Not Graded	37	36.3	22.3

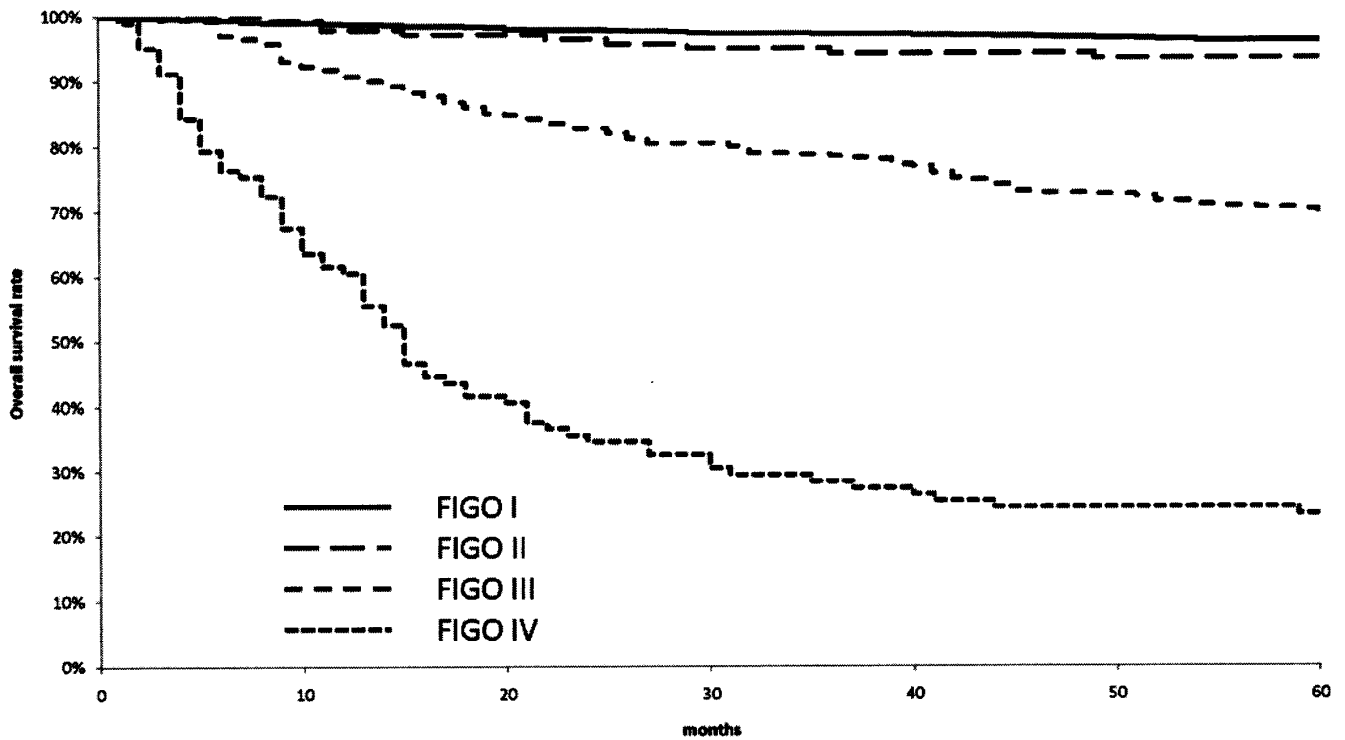
Table 7. 5-Year Survival by Histological Type and Grade, Treatment Started in 2002

Histology	Grade	Patients treated		5-year survival
		No.	%	%
Endometrioid type	Grade 1	842	57.7	96.6
	Grade 2	415	28.4	87.0
	Grade 3	176	12.1	66.5
	Not Graded	26	1.8	67.3
Serous, Mucinous, Clear cell type	Grade 1	12	12.8	83.3
	Grade 2	16	17.0	60.0
	Grade 3	15	16.0	53.3
	Not Graded	51	54.3	75.5
Others	Grade 1	50	33.1	96.0
	Grade 2	34	22.5	88.2
	Grade 3	22	14.6	59.1
	Not Graded	45	29.8	67.6
No description	Grade 1	3	4.0	0.0
	Grade 2	3	4.0	66.7
	Grade 3	8	10.5	50.0
	Not Graded	62	81.6	36.2

Table 8. 5-Year Survival by TNM Classification, Treatment Started in 2002

TNM Stage			Patients treated		5-year survival
			No.	%	%
T1a	N0	M0	351	20.3	97.1
T1b	N0	M0	578	33.4	95.6
T1c	N0	M0	232	13.4	92.7
T2a	N0	M0	49	2.8	93.7
T2b	N0	M0	92	5.3	93.3
T3a	N0	M0	126	7.3	82.8
T3b	N0	M0	9	0.5	37.5
T3c	N0	M0	8	0.5	87.5
T4	N0	M0	7	0.4	28.6
T1a	N1	M0	2	0.1	100.0
T1b	N1	M0	28	1.6	74.5
T1c	N1	M0	37	2.1	71.3
T2a	N1	M0	2	0.1	100.0
T2b	N1	M0	20	1.2	70.0
T3a	N1	M0	34	2.0	50.0
T3b	N1	M0	7	0.4	25.0
T3c	N1	M0	51	3.0	58.4
T4	N1	M0	5	0.3	20.0
Any T	AnyN	M1	92	5.3	23.7

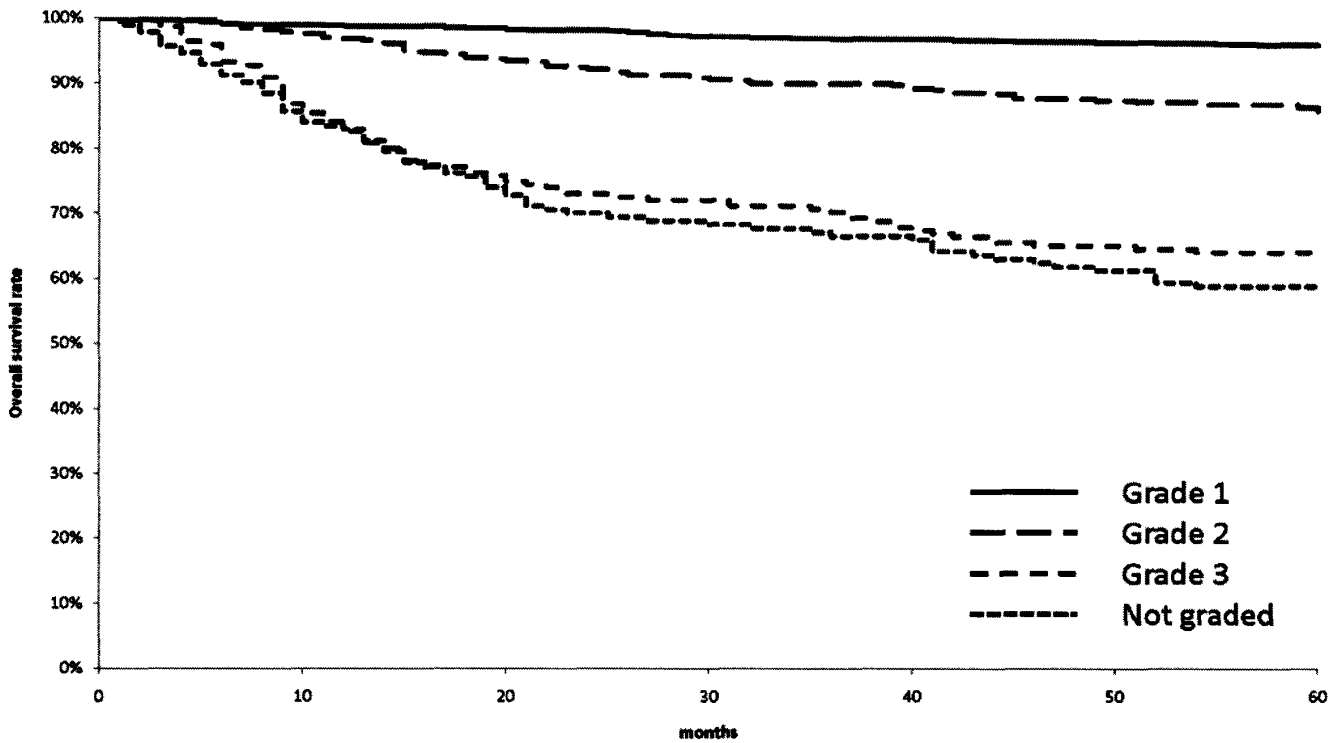
Figure 1. Kaplan-Meier Estimated Overall Survival Curves of Corpus Cancer Patients by FIGO Stage, Treatment Started in 2002



Test of Equality over Strata			
Test	Chi-Square	DF	Pr > Chi-Square
Log-rank	785.9479	3	<.0001
Wilcoxon	786.0462	3	<.0001

Adjustment for Multiple Comparisons for the Log-rank Test				
Strata Comparison		Chi-Square	p-Values	
FIGO Stage	FIGO Stage		Raw	Tukey-Kramer
I	II	125.1	<.0001	<.0001
I	III	213.8	<.0001	<.0001
I	IV	509.6	<.0001	<.0001
II	III	86.3433	<.0001	<.0001
II	IV	234.7	<.0001	<.0001
III	IV	0.1995	0.6551	0.9703

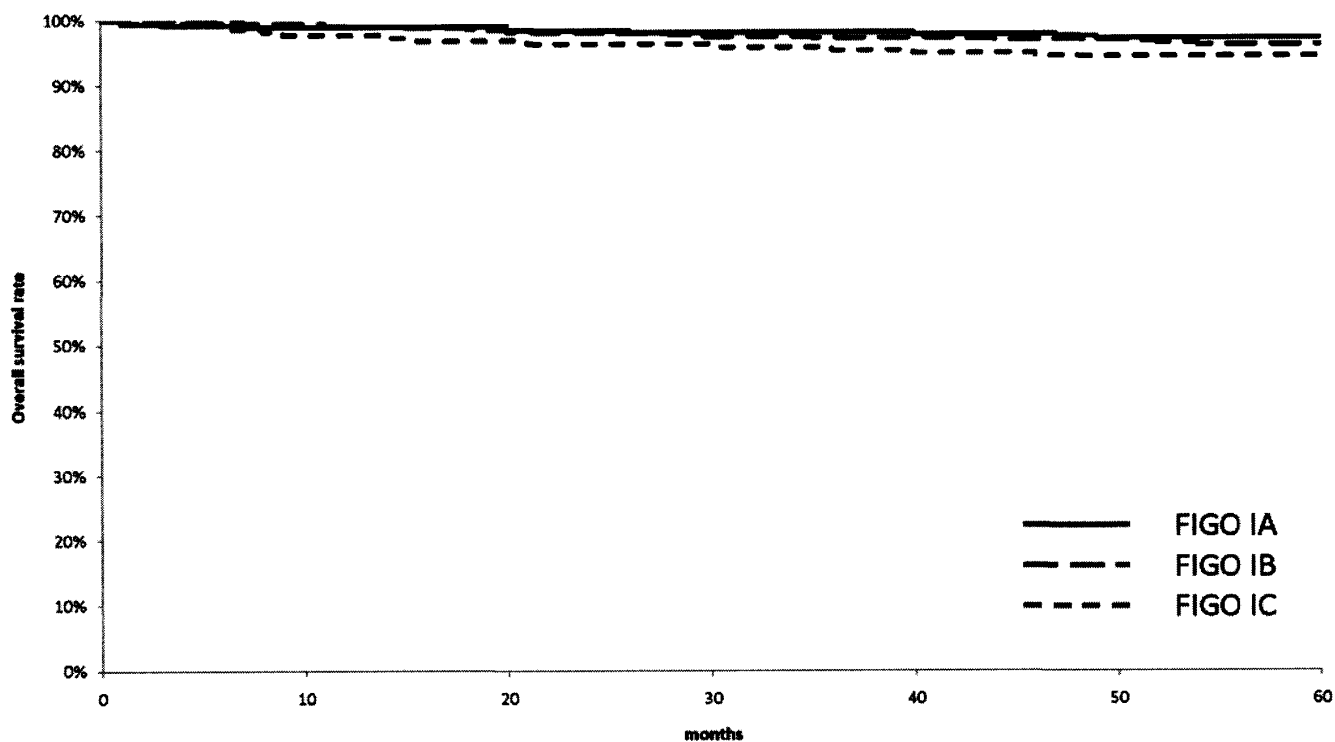
Figure 2. Kaplan-Meier Estimated Overall Survival Curves of Corpus Cancer Patients by Grade of Differentiation, Treatment Started in 2002



Test of Equality over Strata			
Test	Chi-Square	DF	Pr > Chi-Square
Log-rank	296.8185	3	<.0001
Wilcoxon	299.6122	3	<.0001

Adjustment for Multiple Comparisons for the Log-rank Test				
Strata Comparison		Chi-Square	p-Values	
Grade	Grade		Raw	Tukey-Kramer
Grade 1	Grade 2	51.2253	<.0001	<.0001
Grade 1	Grade 3	198.4	<.0001	<.0001
Grade 1	Not Graded	219.5	<.0001	<.0001
Grade 2	Grade 3	33.5303	<.0001	<.0001
Grade 2	Not Graded	37.2927	<.0001	<.0001
Grade 3	Not Graded	0.00511	0.943	0.9999

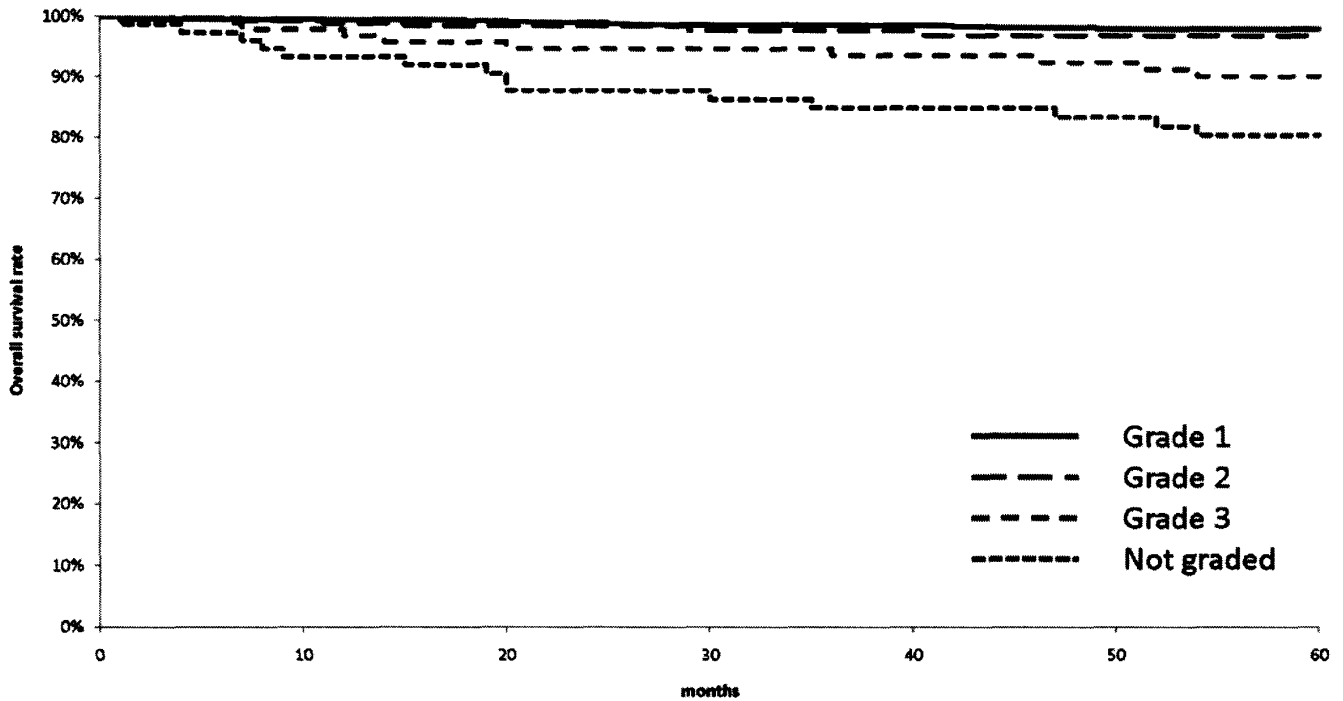
Figure 3. Kaplan-Meier Estimated Overall Survival Curves of FIGO Stage I Corpus Cancer Patients by Substage, Treatment Started in 2002



Test of Equality over Strata			
Test	Chi-Square	DF	Pr > Chi-Square
Log-rank	3.7446	2	0.1538
Wilcoxon	3.7445	2	0.1538

Adjustment for Multiple Comparisons for the Log-rank Test				
Strata Comparison		Chi-Square	p-Values	
FIGO Stage	FIGO Stage		Raw	Tukey-Kramer
IA	IB	0.3112	0.577	0.8425
IA	IC	3.4439	0.0635	0.1518
IB	IC	1.0736	0.3001	0.554

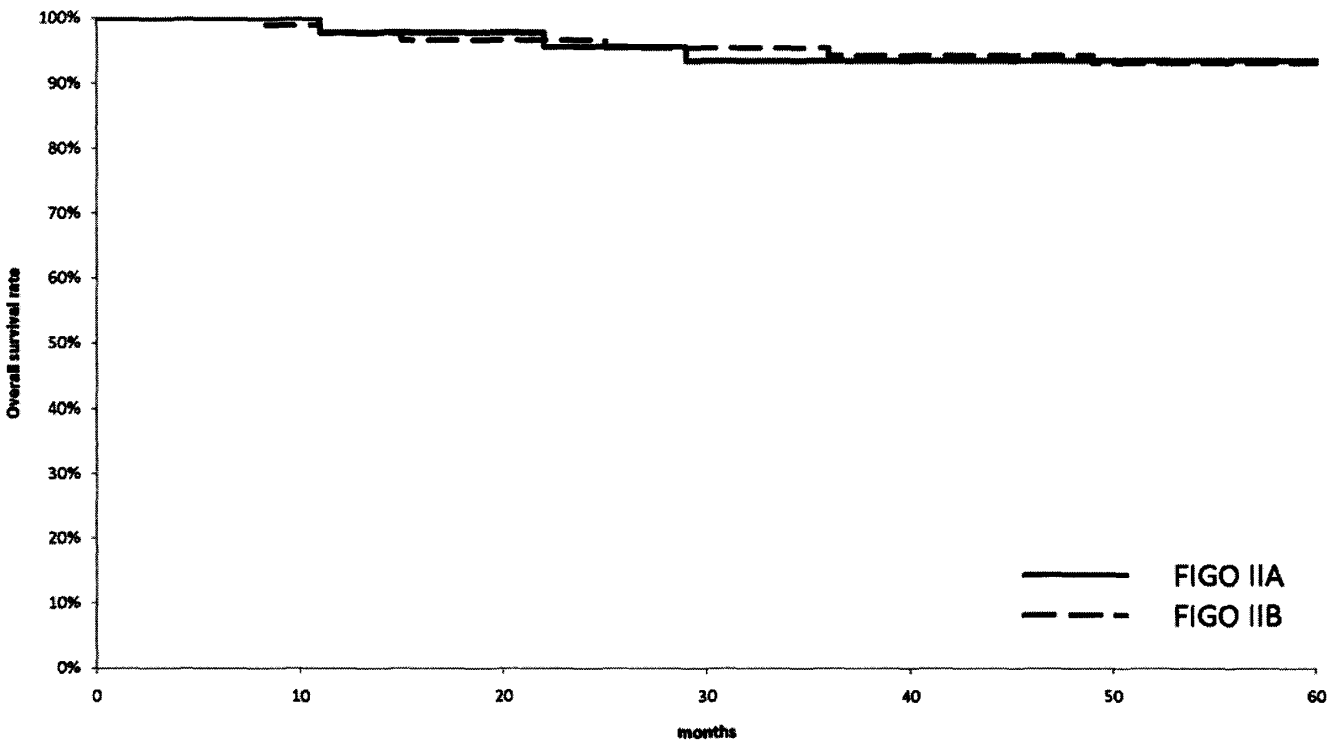
Figure 4. Kaplan-Meier Estimated Overall Survival Curves of FIGO Stage I Corpus Cancer Patients by Grade of Differentiation, Treatment Started in 2002



Test of Equality over Strata			
Test	Chi-Square	DF	Pr > Chi-Square
Log-rank	63.8084	3	<.0001
Wilcoxon	63.5569	3	<.0001

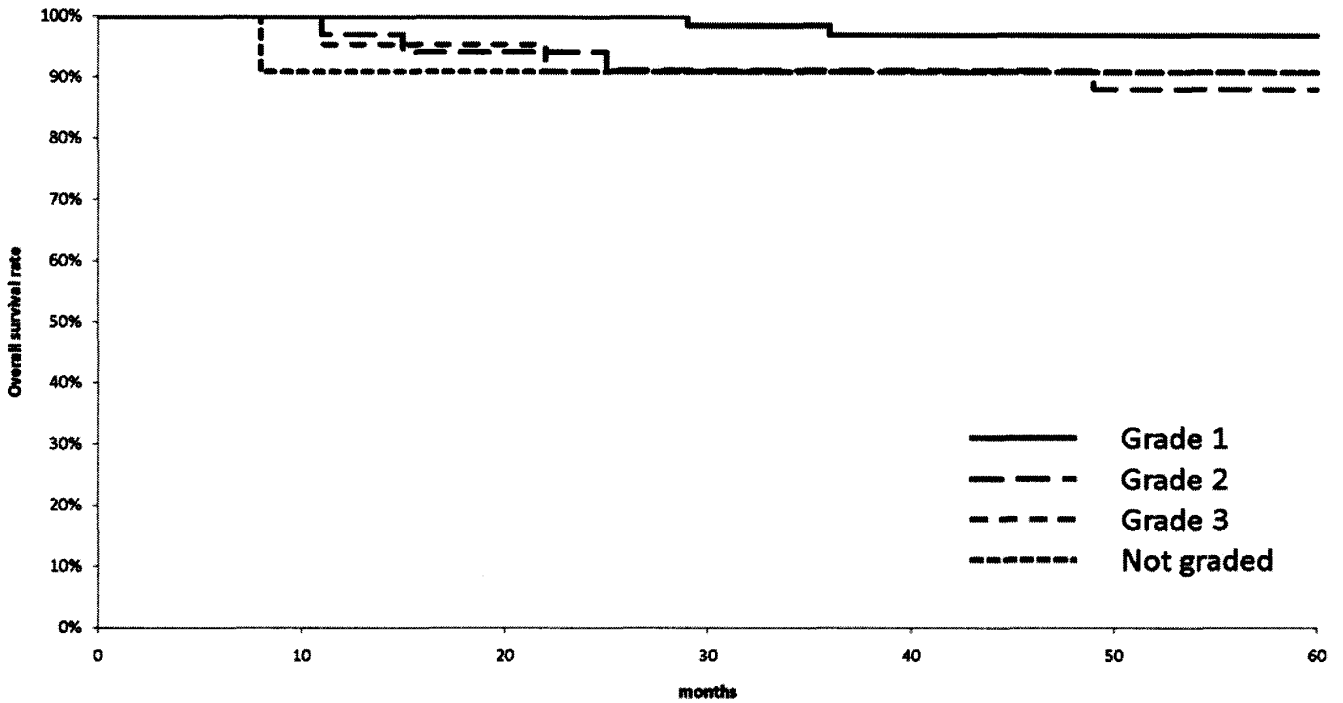
Adjustment for Multiple Comparisons for the Log-rank Test				
Strata Comparison		Chi-Square	p-Values	
Grade	Grade		Raw	Tukey-Kramer
Grade 1	Grade 2	5.657	0.0174	0.0812
Grade 1	Grade 3	22.3517	<.0001	<.0001
Grade 1	Not Graded	42.2838	<.0001	<.0001
Grade 2	Grade 3	3.6267	0.0569	0.2261
Grade 2	Not Graded	14.0543	0.0002	0.001
Grade 3	Not Graded	5.6811	0.0171	0.0802

Figure 5. Kaplan-Meier Estimated Overall Survival Curves of FIGO Stage II Corpus Cancer Patients by Substage, Treatment Started in 2002



Test of Equality over Strata			
Test	Chi-Square	DF	Pr > Chi-Square
Log-rank	0.0064	1	0.9361
Wilcoxon	0.0044	1	0.9473

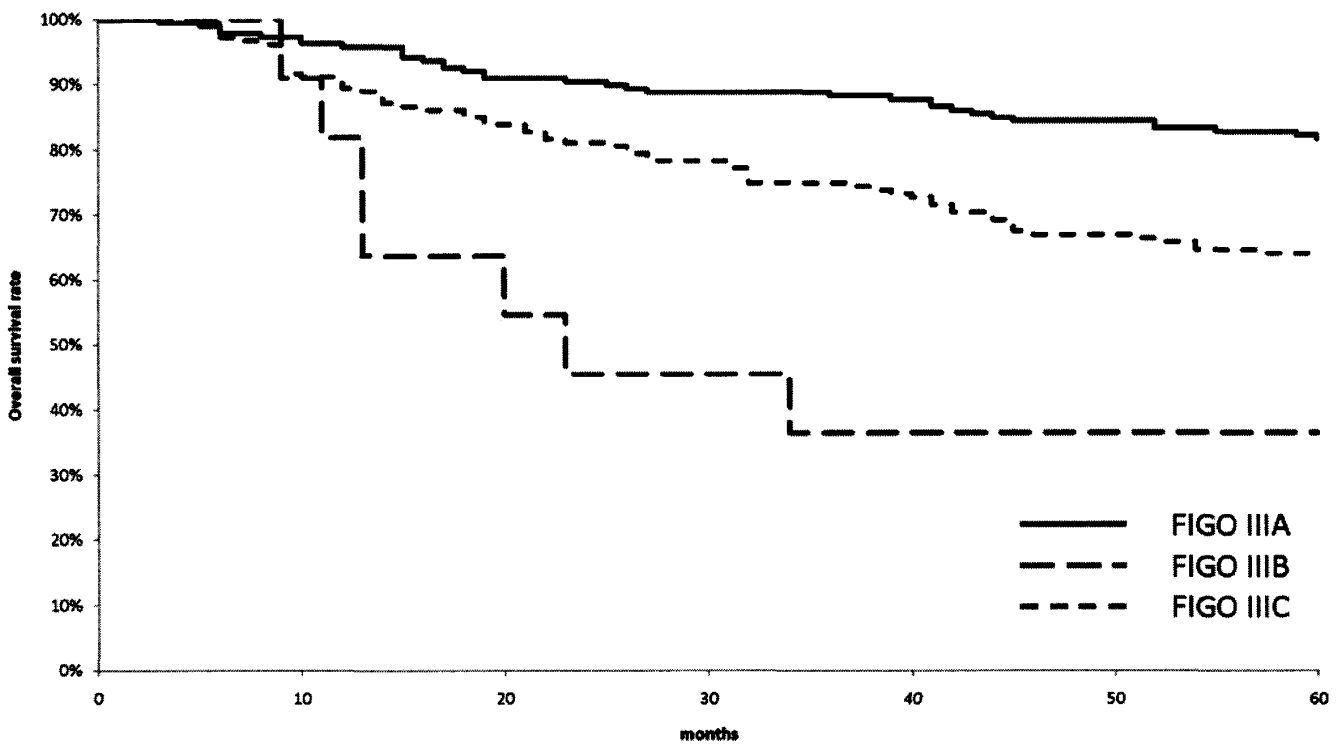
Figure 6. Kaplan-Meier Estimated Overall Survival Curves of FIGO Stage II Corpus Cancer Patients by Grade of Differentiation, Treatment Started in 2002



Test of Equality over Strata			
Test	Chi-Square	DF	Pr > Chi-Square
Log-rank	3.3436	3	0.3416
Wilcoxon	3.448	3	0.3276

Adjustment for Multiple Comparisons for the Log-rank Test				
Strata Comparison		Chi-Square	p-Values	
Grade	Grade		Raw	Tukey-Kramer
Grade 1	Grade 2	3.2055	0.0734	0.2779
Grade 1	Grade 3	2.1383	0.1437	0.4605
Grade 1	Not Graded	2.4546	0.1172	0.3978
Grade 2	Grade 3	0.4142	0.5199	0.9178
Grade 2	Not Graded	0.8319	0.3617	0.7984
Grade 3	Not Graded	0.0352	0.8513	0.9977

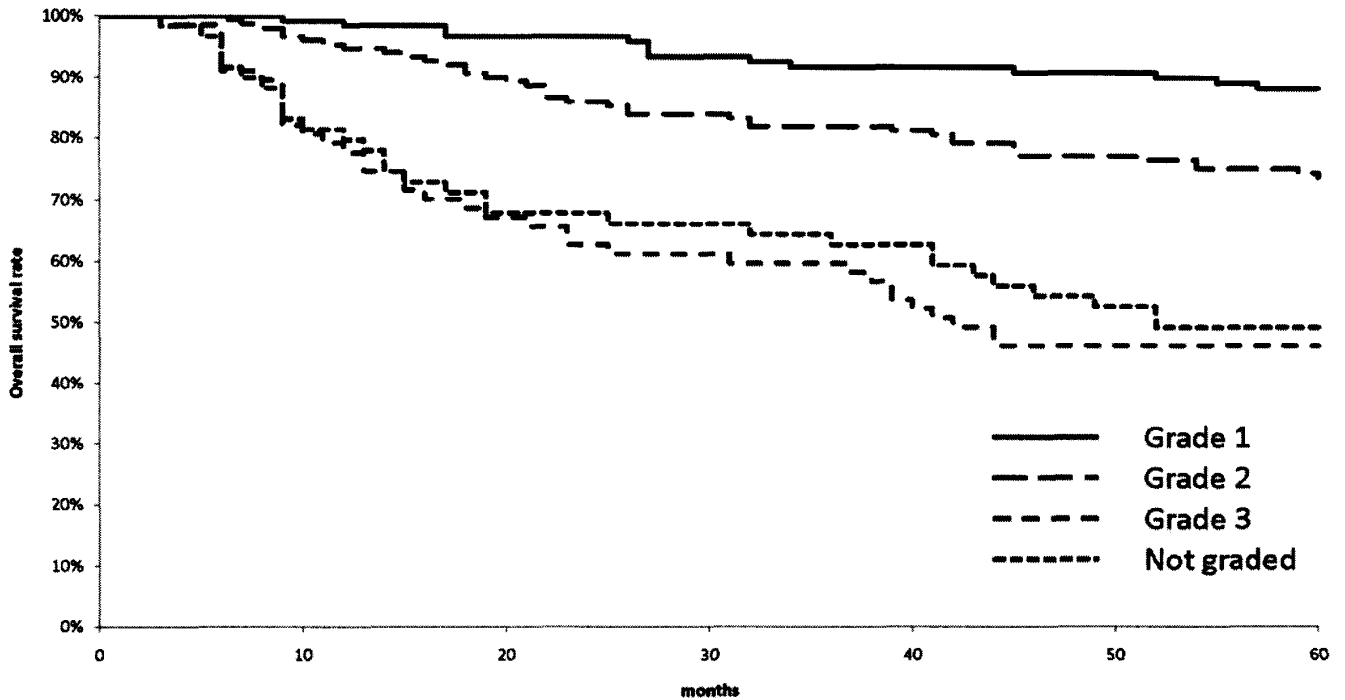
Figure 7. Kaplan-Meier Estimated Overall Survival Curves of FIGO Stage III Corpus Cancer Patients by Substage, Treatment Started in 2002



Test of Equality over Strata			
Test	Chi-Square	DF	Pr > Chi-Square
Log-rank	0.0197	1	0.8883
Wilcoxon	0.0022	1	0.963

Adjustment for Multiple Comparisons for the Log-rank Test				
Strata Comparison		Chi-Square	p-Values	
FIGO Stage	FIGO Stage		Raw	Tukey-Kramer
IIIA	IIIB	22.4366	<.0001	<.0001
IIIA	IIIC	13.8726	0.0002	0.0006
IIIB	IIIC	4.4084	0.0358	0.0899

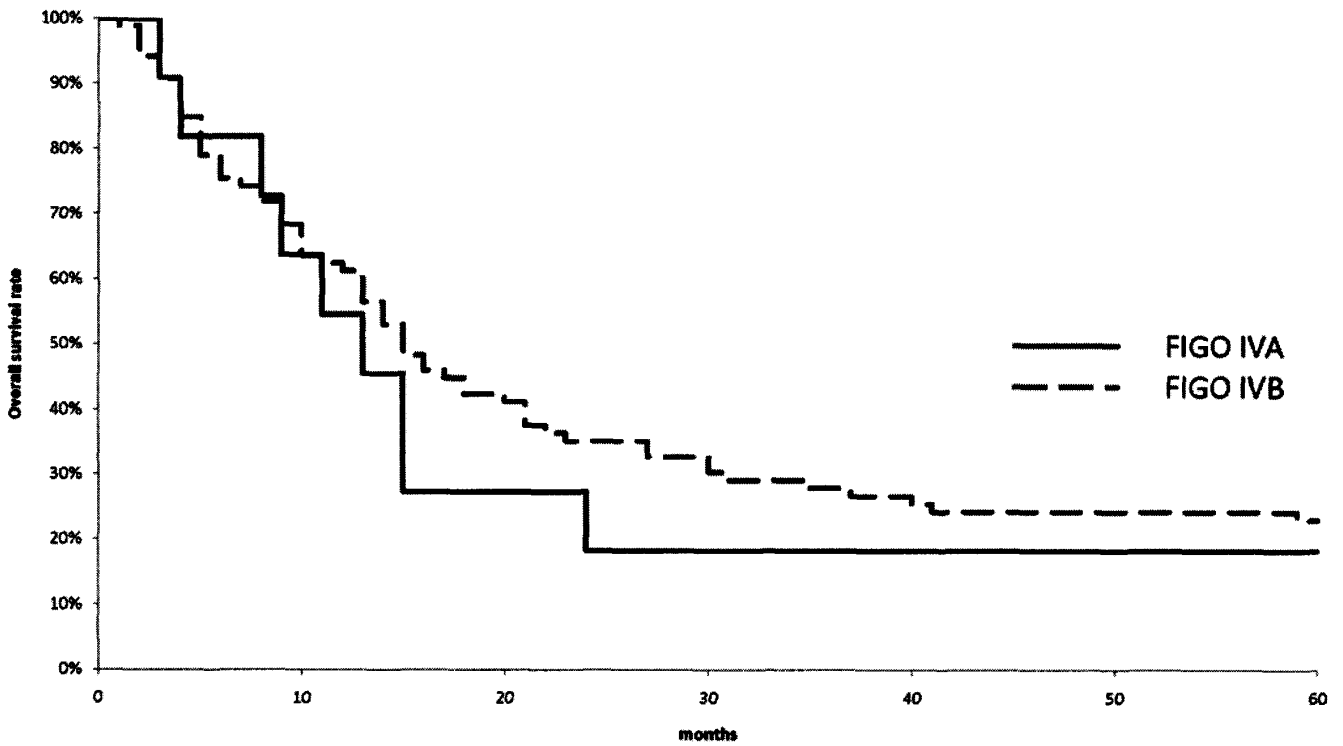
Figure 8. Kaplan-Meier Estimated Overall Survival Curves of FIGO Stage III Corpus Cancer Patients by Grade of Differentiation, Treatment Started in 2002



Test of Equality over Strata			
Test	Chi-Square	DF	Pr > Chi-Square
Log-rank	59.1208	3	<.0001
Wilcoxon	62.1891	3	<.0001

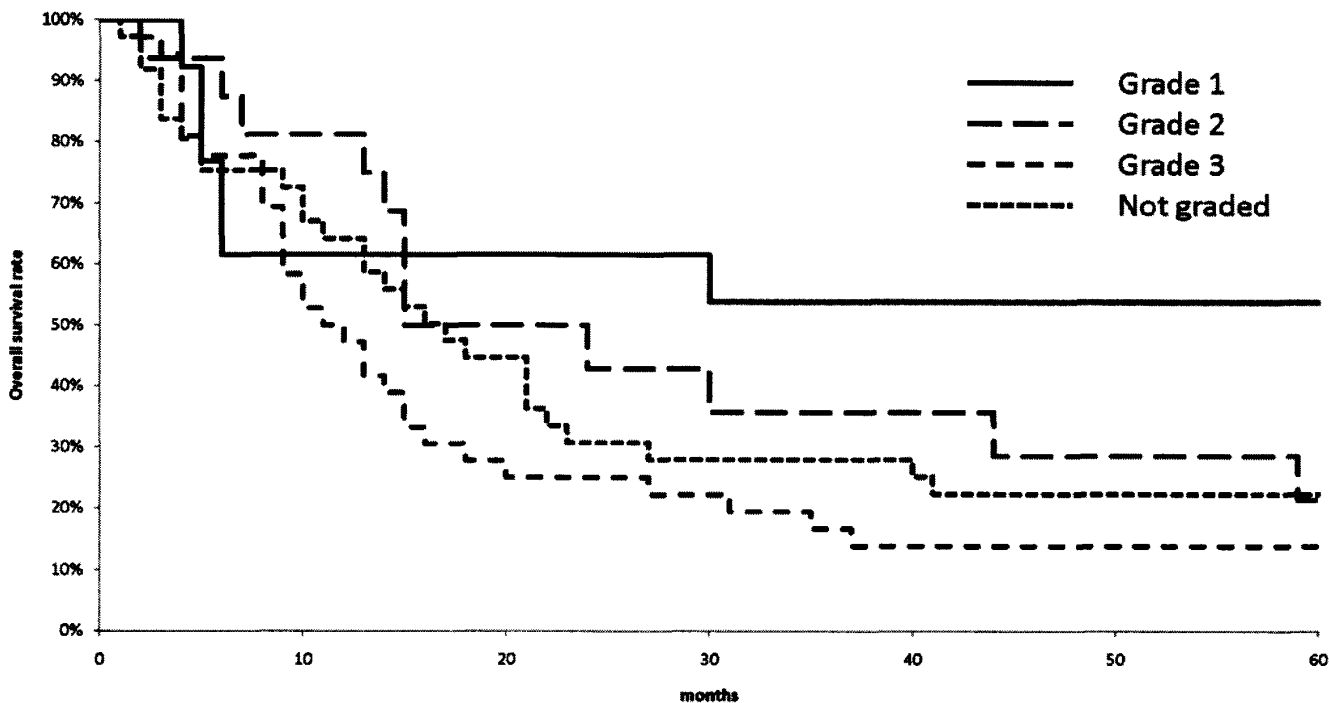
Adjustment for Multiple Comparisons for the Log-rank Test				
Strata Comparison		Chi-Square	p-Values	
Grade	Grade		Raw	Tukey-Kramer
Grade 1	Grade 2	4.1801	0.0409	0.1718
Grade 1	Grade 3	42.5829	<.0001	<.0001
Grade 1	Not Graded	35.3674	<.0001	<.0001
Grade 2	Grade 3	14.0651	0.0002	0.001
Grade 2	Not Graded	9.9195	0.0016	0.0089
Grade 3	Not Graded	0.7509	0.3862	0.8221

Figure 9. Kaplan-Meier Estimated Overall Survival Curves of FIGO Stage IV Corpus Cancer Patients by Substage, Treatment Started in 2002



Test of Equality over Strata			
Test	Chi-Square	DF	Pr > Chi-Square
Log-rank	0.3557	1	0.5509
Wilcoxon	0.2984	1	0.5849

Figure 10. Kaplan-Meier Estimated Overall Survival Curves of FIGO Stage IV Corpus Cancer Patients by Grade of Differentiation, Treatment Started in 2002



Test of Equality over Strata			
Test	Chi-Square	DF	Pr > Chi-Square
Log-rank	6.5134	3	0.0891
Wilcoxon	4.4856	3	0.2136

Adjustment for Multiple Comparisons for the Log-rank Test				
Strata Comparison		Chi-Square	p-Values	
Grade	Grade		Raw	Tukey-Kramer
Grade 1	Grade 2	0.6971	0.4038	0.8379
Grade 1	Grade 3	6.2333	0.0125	0.0604
Grade 1	Not Graded	1.2236	0.2687	0.6857
Grade 2	Grade 3	2.8581	0.0909	0.3286
Grade 2	Not Graded	0.1504	0.6982	0.9802
Grade 3	Not Graded	1.1756	0.2783	0.6992

卵巣悪性腫瘍治療成績

Statement for the Year 2002, Inclusive, Malignant Ovarian Tumor

Table A. 5-Year Results, Stage I-IV

A	B	C	D	E	F	G	H	I	J	K
Institution	Total No. Treated	no description	Alive with no Evidence of the Disease	Alive with Carcinoma	Alive with or without Carcinoma Unknown	Died of Carcinoma	Died of Other Malignant Tumor	Died of Intercurrent Disease	Cause of Death Unknown	Lost to follow-up
1 KOBE UNIV.	9	8	0	0	0	1	0	0	0	0
3 TOHOKU UNIV.	27	0	13	1	3	8	0	0	0	2
4 FUKUSHIMA MED. UNIV.	6	5	0	0	0	1	0	0	0	0
5 KANAZAWA UNIV.	9	0	3	0	0	3	0	0	0	3
6 OSAKA NATIONAL HOSP.	19	0	13	0	0	3	2	0	0	1
7 GIFU UNIV.	16	0	8	0	0	4	0	0	0	4
8 SHINSHU UNIV.	6	5	0	0	0	1	0	0	0	0
9 NIPPON MED. SCH.	20	14	0	0	0	3	0	0	0	3
10 NAGASAKI UNIV.	21	0	11	2	1	6	1	0	0	0
11 RED CROSS MED. CENTER	11	0	6	0	0	2	2	0	0	1
12 KUMAMOTO UNIV.	15	0	0	7	1	7	0	0	0	0
15 KEIO UNIV.	29	0	11	4	1	8	0	0	0	5
16 KYUSHU UNIV.	32	0	13	1	0	12	0	0	0	6
17 TOKYO UNIV.	22	20	0	0	0	2	0	0	0	0
18 JIKEI UNIV.	24	22	0	0	0	1	0	0	0	1
19 CANCER INST. HOSP.	46	0	22	1	0	13	0	1	0	9
20 KYOTO UNIV.	19	0	10	0	0	6	0	0	0	3
21 NIIGATA UNIV.	40	29	0	0	0	8	0	0	0	3
22 OKAYAMA UNIV.	9	9	0	0	0	0	0	0	0	0
23 HIROSHIMA RED CROSS HOSP.	5	3	0	0	0	2	0	0	0	0
24 OSAKA CITY UNIV.	13	11	0	0	0	2	0	0	0	0
25 HIROSAKI UNIV.	3	0	1	0	0	2	0	0	0	0
26 SENDAI MED. CENTER	17	0	0	10	1	5	0	0	1	0
27 KURUME UNIV.	22	0	11	1	0	9	0	0	0	1
29 JUNTENDO UNIV.	22	0	8	1	1	10	0	1	0	1
32 KAGOSHIMA UNIV.	16	0	9	1	0	3	0	0	0	3
33 HOKKAIDO UNIV.	14	0	4	0	1	5	0	0	0	4
34 TOKYO MED. DENT. UNIV.	8	4	0	0	0	3	0	0	0	1
35 MIYAZAKI PREF. HOSP.	10	0	6	0	0	2	0	0	0	2
40 MITUI MEMORIAL HOSP.	15	12	0	0	0	3	0	0	0	0
41 SAPPORO MED. UNIV.	21	0	14	0	0	1	0	0	0	6
42 WAKAYAMA RED CROSS HOSP.	19	0	10	0	0	7	0	0	0	2
44 OSAKA UNIV.	9	8	0	0	0	1	0	0	0	0
47 NAGOYA UNIV.	13	0	6	0	0	3	0	0	0	4
48 NAGOYA CITY UNIV.	12	0	3	1	0	7	0	0	0	1
49 KURASHIKI CENTRAL HOSP.	11	0	5	0	1	3	0	0	0	2
50 OKAYAMA RED CROSS HOSP.	11	10	0	0	0	1	0	0	0	0
56 MIE UNIV.	21	0	13	2	0	6	0	0	0	0
57 KANAZAWA MED. CENTER	8	0	3	1	0	4	0	0	0	0
58 NTT MED. CENTER TOKYO	12	0	8	2	0	2	0	0	0	0
59 KOBE CITY MED. CENTER GENERAL HOSP.	12	0	6	0	0	4	0	0	0	2
61 YOKOHAMA CITY UNIV.	19	0	9	3	0	5	0	0	2	0
63 TOTTORI UNIV.	20	0	8	0	0	12	0	0	0	0
67 HIROSHIMA UNIV.	15	14	0	0	0	1	0	0	0	0
68 YAMAGUCHI UNIV.	9	0	2	2	1	3	0	0	0	1
69 TOYOOKA PUBLIC HOSP.	9	0	4	0	0	4	0	0	0	1
70 GUNMA UNIV.	14	0	9	0	1	2	0	1	0	1
77 CHIBA UNIV.	16	0	8	3	0	5	0	0	0	0
79 KANSAI MED. UNIV.	15	0	8	0	0	3	0	0	0	4
80 KAWASAKI MED. SCH. KAWASAKI HOSP.	3	0	2	0	1	0	0	0	0	0
82 YAMAGUCHI RED CROSS HOSP.	5	0	3	0	0	2	0	0	0	0

	A	B	C	D	E	F	G	H	I	J	K
	Institution	Total No. Treated	no description	Alive with no Evidence of the Disease	Alive with Carcinoma	Alive with or without Carcinoma Unknown	Died of Carcinoma	Died of Other Malignant Tumor	Died of Intercurrent Disease	Cause of Death Unknown	Lost to follow-up
	84 NIPPON MED. SCH. MUSASHI KOSUGI HOSP.	9	9	0	0	0	0	0	0	0	0
	85 NAGOYA MED. CENTER	21	9	0	0	0	1	0	0	0	11
	89 NIHON UNIV.	20	0	6	0	0	5	0	0	0	9
○	90 RED CROSS NAGOYA DAICHI HOSP.	16	0	7	0	0	8	0	0	0	1
	92 NATIONAL CENTER FOR GLOBAL HEALTH AND MED.	16	14	0	0	0	2	0	0	0	0
○	94 KUMAMOTO MED. CENTER	16	0	11	0	5	0	0	0	0	0
○	95 NARA MED. UNIV.	8	0	2	0	0	6	0	0	0	0
○	96 OSAKA MED. COLL.	17	0	3	0	0	12	0	0	0	2
	97 KYUSHU UNIV. SEIKEN	3	3	0	0	0	0	0	0	0	0
	100 YAMANASHI PREF. CENTRAL HOSP.	7	4	0	0	0	3	0	0	0	0
○	101 NATIONAL CANCER CENTER	33	0	18	4	1	10	0	0	0	0
	102 SHIZUOKA GENERAL HOSP.	12	0	3	2	0	3	0	0	0	4
○	103 OSAKA MED. CENTER FOR CANCER AND CVD	15	0	7	1	0	7	0	0	0	0
	105 OKAYAMA SAISEIKAI GENERAL HOSP.	6	4	0	0	0	2	0	0	0	0
	107 SHIMADA MUNI. HOSP.	1	1	0	0	0	0	0	0	0	0
○	109 FUKUI RED CROSS HOSP.	8	0	2	2	0	4	0	0	0	0
○	110 OSAKA POLICE HOSP.	10	0	3	0	0	4	0	1	0	2
○	111 HYOGO CANCER CENTER	21	0	12	3	0	5	0	0	0	1
	114 KYUSHU MED. CENTER	14	11	0	0	0	3	0	0	0	0
○	116 AICHI CANCER CENTER	26	0	9	2	0	15	0	0	0	0
○	117 KANAGAWA CANCER CENTER	22	0	12	0	0	10	0	0	0	0
○	118 OITA PREF. HOSP.	17	0	12	0	0	3	0	0	0	2
	119 TOYAMA PREF. CENTRAL HOSP.	19	19	0	0	0	0	0	0	0	0
	120 TOKUSHIMA UNIV.	3	0	1	0	0	1	0	0	0	1
○	121 SHOWA UNIV.	18	0	6	2	2	6	0	1	0	1
○	122 NIIGATA CANCER CENTER HOSP.	20	0	12	1	0	5	1	1	0	0
○	123 HIROSHIMA CITY HOSP.	10	0	6	2	0	2	0	0	0	0
○	125 YAMAGATA PREF. CENTRAL HOSP.	4	0	3	0	0	0	1	0	0	0
○	126 WAKAYAMA MED. UNIV.	13	0	6	3	0	4	0	0	0	0
○	127 TAKAMATSU RED CROSS HOSP.	12	0	7	0	0	5	0	0	0	0
	129 KAGOSHIMA CITY HOSP.	19	17	0	0	0	2	0	0	0	0
○	130 FUKUYAMA MED. CENTER	10	0	3	0	0	7	0	0	0	0
○	132 SHIKOKU CANCER CENTER	22	0	11	4	0	6	0	0	0	1
	133 KAWASAKI MUNI. HOSP.	14	12	0	0	0	2	0	0	0	0
	136 ONOMICHI GENERAL HOSP.	3	0	0	0	0	2	0	0	0	1
	139 KYOUNDO HOSP.	11	0	6	0	0	2	0	0	0	3
	140 KYUSHU KOSEINENKIN HOSP.	13	13	0	0	0	0	0	0	0	0
○	141 KURE MED. CENTER	9	0	9	0	0	0	0	0	0	0
	142 KOCHI PREF. CENTRAL HOSP.	6	5	0	0	0	1	0	0	0	0
○	143 GUNMA PREF. CANCER CENTER	20	0	14	1	0	4	0	0	0	1
	144 TOKUSHIMA PREF. CENTRAL HOSP.	3	0	1	0	0	1	0	0	0	1
○	145 FUKUOKA UNIV.	17	0	6	1	1	4	2	0	0	3
	146 TENRI HOSP.	11	0	4	1	0	3	0	0	0	3
○	147 KASUMIGAUURA MED. CENTER	3	0	1	1	1	0	0	0	0	0
○	148 CHIBA CANCER CENTER	11	0	3	1	2	4	0	0	0	1
○	149 KYUSHU CANCER CENTER	19	0	14	1	0	3	0	0	0	1
○	154 RYUKYU UNIV.	13	0	11	0	0	2	0	0	0	0
○	155 KOCHI MUNI. HOSP.	3	0	2	0	0	1	0	0	0	0
○	157 SAITAMA CANCER CENTER	41	0	17	3	0	18	1	1	0	1
	158 KINKI UNIV.	17	14	0	0	0	1	0	1	0	1
	159 RED CROSS NAGASAKI ATOMIC BOMB HOSP.	5	5	0	0	0	0	0	0	0	0
	160 HIMEJI RED CROSS HOSP.	24	24	0	0	0	0	0	0	0	0
○	161 TOKYO METRO. KOMAGOME HOSP.	18	0	9	0	1	5	1	1	0	1
○	163 JICHI MED. UNIV.	37	0	15	5	1	16	0	0	0	0
○	166 TOCHIGI NATIONAL HOSP.	8	0	4	1	0	3	0	0	0	0
○	167 ST. MARIANNA UNIV.	19	0	4	3	0	10	0	0	0	2

	A	B	C	D	E	F	G	H	I	J	K
	Institution	Total No. Treated	no description	Alive with no Evidence of the Disease	Alive with Carcinoma	Alive with or without Carcinoma Unknown	Died of Carcinoma	Died of Other Malignant Tumor	Died of Intercurrent Disease	Cause of Death Unknown	Lost to follow-up
○	168 KITAZATO UNIV.	35	0	22	0	0	5	0	0	0	8
○	169 AKITA UNIV.	5	0	3	0	1	1	0	0	0	0
○	170 KANSAI ROSAI HOSP.	10	0	10	0	0	0	0	0	0	0
	171 KYOTO CITY HOSP.	6	6	0	0	0	0	0	0	0	0
	172 MITO MED. CENTER	14	9	0	0	0	5	0	0	0	0
○	173 ASAHIKAWA MED. COLL.	10	0	5	0	1	2	0	0	0	2
	175 SHIMANE UNIV.	3	2	0	0	0	1	0	0	0	0
	176 KAWASAKI MED. SCH.	15	13	0	0	0	2	0	0	0	0
○	177 SAITAMA NATIONAL HOSP.	14	0	6	1	0	6	0	0	0	1
○	178 TOYAMA UNIV.	5	0	3	1	0	1	0	0	0	0
○	179 TSUKUBA UNIV.	28	0	8	3	2	12	0	0	0	3
	180 HYOGO MED. COLL.	12	11	0	0	0	1	0	0	0	0
	181 AICHI MED. UNIV.	7	0	4	0	0	1	0	0	0	2
○	182 NATIONAL DEFENSE MED. COLL.	22	0	9	0	0	9	1	0	0	3
	183 KOCHI UNIV.	4	1	0	0	0	1	0	1	0	1
○	184 KYOTO 2ND RED CROSS HOSP.	16	0	10	1	0	3	1	0	0	1
	185 SAGA UNIV.	12	0	3	1	0	5	0	0	0	3
	186 NAGAOKA RED CROSS HOSP.	15	15	0	0	0	0	0	0	0	0
	187 EHIME UNIV.	9	7	0	0	0	2	0	0	0	0
○	188 TOKUSHIMA MUNI. HOSP.	11	0	2	1	0	4	2	0	0	2
○	189 TEIKYO UNIV.	7	0	2	0	1	4	0	0	0	0
○	190 HIMEJI MED. CENTER	6	0	0	4	0	2	0	0	0	0
	195 TOKYO METRO. TAMA MED. CENTER	24	22	0	0	0	2	0	0	0	0
	196 YAMAGATA UNIV.	15	15	0	0	0	0	0	0	0	0
○	197 YOKKAICHI MUNI. HOSP.	5	0	4	0	0	0	0	0	0	1
○	198 UNIV. OF YAMANASHI	10	0	5	0	0	2	0	0	1	2
	199 FUKUI UNIV.	9	9	0	0	0	0	0	0	0	0
○	200 SASEBO KYOSAI HOSP.	10	0	6	2	0	2	0	0	0	0
○	201 KOSEI CENTRAL HOSP.	5	0	2	0	0	3	0	0	0	0
	202 SAITAMA MED. CENTER	27	16	0	0	0	9	0	1	0	1
	203 TOCHIGI CANCER CENTER	18	12	0	0	0	6	0	0	0	0
○	204 NIPPON MED. SCH. TAMA NAGAYAMA HOSP.	3	0	2	0	0	1	0	0	0	0
	205 KYORIN UNIV.	14	0	0	0	0	2	0	0	0	12
	206 OSAKA ROUSAI HOSP.	10	6	0	0	0	4	0	0	0	0
	207 OSAKA CITY GENERAL HOSP.	24	20	0	0	0	4	0	0	0	0
○	208 SIMANE PREF. CENTRAL HOSP.	6	0	5	0	0	1	0	0	0	0
	209 KURASIKI MED. CENTER	5	5	0	0	0	0	0	0	0	0
	210 MIDORI MUNI. HOSP.	5	5	0	0	0	0	0	0	0	0
	211 SAPPORO-KOUSEI GENERAL HOSP.	11	9	0	0	0	2	0	0	0	0
○	213 DOKKYO MED. UNIV.	20	0	8	0	1	8	0	0	0	3
	214 MATSUMOTO MED. CENTER	1	1	0	0	0	0	0	0	0	0
○	215 YAMADA RED CROSS HOSP.	6	0	4	0	0	2	0	0	0	0
○	216 FUKUOKA RED CROSS HOSP.	7	0	4	1	0	1	0	0	0	1
	217 MUSASHINO RED CROSS HOSP.	14	10	0	0	0	2	0	0	0	2
	218 HYOGO PREF. AWAJI HOSP.	4	4	0	0	0	0	0	0	0	0
○	219 SHIGA UNIV. OF MED. SCIENCE	6	0	4	1	0	0	0	0	0	1
	220 ISEHARA KYODO HOSP.	6	0	3	0	0	1	0	0	0	2
	221 EHIME PREF. CENTRAL HOSP.	8	5	0	0	0	2	0	0	0	1
	222 KUSHIRO ROUSAI HOSP.	3	2	0	0	0	0	0	0	0	1
○	223 TOTTORI PREF. CENTRAL HOSP.	2	0	1	0	0	1	0	0	0	0
○	225 ASHIKAGA RED CROSS HOSP.	14	0	11	0	0	3	0	0	0	0
	226 TSUKUBA MED. CENTER	4	3	0	0	0	0	0	1	0	0
○	228 NAGANO MUNI. HOSP.	13	0	10	2	0	0	0	0	0	1
	229 ST. MARIANNA UNIV. YOKOHAMA CITY SEIBU HOSP.	6	5	0	0	0	0	0	0	0	1
	230 SAGA PREF. HOSP. KOSEIKAN	5	4	0	0	0	1	0	0	0	0
○	231 OKINAWA PREF. CHUBU HOSP.	6	0	4	0	0	2	0	0	0	0

A	B	C	D	E	F	G	H	I	J	K
Institution	Total No. Treated	no description	Alive with no Evidence of the Disease	Alive with Carcinoma	Alive with or without Carcinoma Unknown	Died of Carcinoma	Died of Other Malignant Tumor	Died of Intercurrent Disease	Cause of Death Unknown	Lost to follow-up
○ 232 TOYAMA RED CROSS HOSP.	6	0	4	0	0	1	0	1	0	0
233 HIROSHIMA PREF. HOSP.	10	8	0	0	0	1	0	0	0	1
○ 234 SHONAN KAMAKURA GENERAL HOSP.	8	0	5	2	0	1	0	0	0	0
○ 235 UNIV. OCCUPATIONAL & ENVIRONMENTAL HEALTH	6	0	2	0	0	4	0	0	0	0
236 KOSHIGAYA MUNI. HOSP.	13	10	0	0	0	3	0	0	0	0
○ 237 FUJITA HEALTH UMIN.	16	0	6	1	1	5	0	1	0	2
○ 238 OHITA UNIV.	7	0	3	0	0	4	0	0	0	0
○ 239 TOYOHASHI MUNI. HOSP.	13	0	9	0	0	3	0	0	0	1
240 HYOGO PREF. KAKOGAWA MED. CENTER	7	7	0	0	0	0	0	0	0	0
502 SAN-IKUKAI HOSP.	7	6	0	0	0	1	0	0	0	0
503 HACHINOHE CITY HOSP.	11	10	0	0	0	1	0	0	0	0
504 MIMURO HOSP.	6	0	0	0	0	2	0	0	0	4
506 OGAKI MUNI. HOSP.	17	15	0	0	0	1	1	0	0	0
507 FUJI CITY GENERAL HOSP.	6	0	3	0	0	1	0	0	0	2
508 SAISEIKAI KYOTO HOSP.	3	2	0	0	0	1	0	0	0	0
509 JIKEI UNIV. 3RD HOSP.	14	8	0	0	0	4	0	0	0	2
510 KURE KYOSAI HOSP.	11	8	0	0	0	3	0	0	0	0
511 YOKOHAMASAKAE KYOSAI HOSP.	5	4	0	0	0	0	1	0	0	0
○ 513 KANTO ROSAI HOSP.	4	0	1	0	0	2	0	1	0	0
○ 515 TOKAI UNIV.	7	0	5	0	0	2	0	0	0	0
○ 516 ASAHI CENTRAL HOSP.	13	0	5	3	1	2	0	0	0	2
○ 517 YOKOHAMA MUNI. HOSP.	7	0	3	2	0	2	0	0	0	0
518 YOKOHAMA MINAMI KYOSAI HOSP.	18	1	6	0	0	7	0	0	0	4
519 KYOTO KATURA HOSP.	5	5	0	0	0	0	0	0	0	0
520 JIKEI UNIV. KASHIWA HOSP.	42	26	0	0	0	7	0	0	0	9
525 YAMATO CITY HOSP.	4	4	0	0	0	0	0	0	0	0
○ 526 JIKEI UNIV. AOTO HOSP.	21	0	12	1	0	5	0	0	0	3
Total	2,471	669	776	114	35	625	17	15	4	216

Table 1. No. of Patients by Stage and Age

FIGO Stage	Age	No description		~19		20~29		30~39		40~49		50~59		60~69		70~79		80~		Total	
		No.	%	No.	%	No.	%	No.	%	No.	%	No.	%	No.	%	No.	%	No.	%	No.	%
I	A	0	0.0	7	0.3	25	1.0	43	1.7	75	3.0	103	4.2	64	2.6	28	1.1	17	0.7	362	14.7
	B	0	0.0	0	0.0	1	0.0	0	0.0	4	0.2	8	0.3	1	0.0	2	0.1	0	0.0	16	0.7
	C(b)	0	0.0	3	0.1	8	0.3	32	1.3	62	2.5	128	5.2	47	1.9	12	0.5	10	0.4	302	12.2
	C(1)	0	0.0	0	0.0	2	0.1	1	0.0	5	0.2	13	0.5	4	0.2	3	0.1	0	0.0	28	1.1
	C(2)	0	0.0	0	0.0	6	0.2	7	0.3	21	0.9	31	1.3	16	0.7	5	0.2	2	0.1	88	3.6
	C(a)	0	0.0	3	0.1	12	0.5	15	0.6	41	1.7	53	2.1	25	1.0	15	0.6	5	0.2	169	6.8
	C not clear	0	0.0	0	0.0	0	0.0	0	0.0	1	0.0	1	0.0	1	0.0	0	0.0	0	0.0	3	0.1
total	0	0.0	13	0.5	54	2.2	98	4.0	209	8.5	337	13.6	158	6.4	65	2.6	34	1.4	968	39.2	
II	A	0	0.0	0	0.0	0	0.0	3	0.1	6	0.2	5	0.2	6	0.2	4	0.2	0	0.0	24	1.0
	B	0	0.0	0	0.0	0	0.0	2	0.1	10	0.4	13	0.5	3	0.1	7	0.3	0	0.0	35	1.4
	C(b)	0	0.0	0	0.0	3	0.1	2	0.1	16	0.7	21	0.9	12	0.5	6	0.2	0	0.0	60	2.4
	C(1)	0	0.0	0	0.0	0	0.0	0	0.0	1	0.0	1	0.0	0	0.0	2	0.1	0	0.0	4	0.2
	C(2)	0	0.0	0	0.0	4	0.2	3	0.1	15	0.6	16	0.7	13	0.5	6	0.2	2	0.1	59	2.4
	C(a)	0	0.0	1	0.0	2	0.1	4	0.2	15	0.6	38	1.5	14	0.6	3	0.1	1	0.0	78	3.2
	C not clear	0	0.0	0	0.0	0	0.0	0	0.0	0	0.0	1	0.0	2	0.1	0	0.0	0	0.0	3	0.1
total	0	0.0	1	0.0	9	0.4	14	0.6	63	2.6	95	3.8	50	2.0	28	1.1	3	0.1	263	10.6	
III	A	0	0.0	0	0.0	1	0.0	3	0.1	6	0.2	12	0.5	7	0.3	7	0.3	1	0.0	37	1.5
	B	0	0.0	2	0.1	3	0.1	6	0.2	22	0.9	29	1.2	31	1.3	16	0.7	0	0.0	109	4.4
	C	0	0.0	3	0.1	7	0.3	31	1.3	137	5.5	237	9.6	179	7.2	113	4.6	16	0.7	723	29.3
total	0	0.0	5	0.2	11	0.5	40	1.6	165	6.7	278	11.3	217	8.8	136	5.5	17	0.7	869	35.2	
IV		0	0.0	1	0.0	2	0.1	12	0.5	37	1.5	70	2.8	63	2.6	27	1.1	6	0.2	218	8.8
Neoadjuvant Chemotherapy		0	0.0	0	0.0	0	0.0	5	0.2	17	0.7	51	2.1	42	1.7	28	1.1	4	0.2	147	6.0
Unknown		0	0.0	0	0.0	1	0.0	0	0.0	1	0.0	2	0.1	2	0.1	0	0.0	0	0.0	6	0.2
Total		0	0.0	20	0.8	77	3.1	169	6.8	492	19.9	833	33.7	532	21.5	284	11.5	64	2.6	2,471	100.0

Table 2. 5-Year Results, Treatment Started in 2002

5-year result	No. of patients	%
Alive with no Evidence of the Disease	671	49.0
Alive with Carcinoma	110	8.0
Alive with or without Carcinoma Unknown	34	2.5
Died of Carcinoma	451	32.9
Died of Other Malignant Tumor	15	1.1
Died of Intercurrent Disease	11	0.8
Cause of Death Unknown	4	0.3
Lost to follow-up	73	5.3
Total	1,369	

Table 3. 5-Year Survival by Stage, Treatment Started in 2002

FIGO Stage		Patients treated		5-year survival	
		No.		%	
I	A	208	522	94.9	90.3
	B	6		66.7	
	C(b)	155		90.3	
	C(1)	15		86.7	
	C(2)	51		83.9	
	C(a)	84		85.2	
	C not clear	3		-	
II	A	10	148	80.0	73.8
	B	19		83.9	
	C(b)	34		61.3	
	C(1)	3		66.7	
	C(2)	39		74.1	
	C(a)	40		79.4	
	C not clear	3		-	
III	A	20	472	58.2	45.6
	B	63		63.5	
	C	389		41.9	
IV		140		31.7	
Neoadjuvant Chemotherapy		85		33.9	
Unknown		2		-	
Total		1,369		-	

Table 4. 5-Year Survival by Stage, Treatment Started in 2002
Surface Epithelial-Stromal Tumors

FIGO Stage		Patients treated		5-year survival	
		No.		%	
I	A	181	482	94.7	90.3
	B	6		66.7	
	C(b)	151		90.7	
	C(1)	14		85.7	
	C(2)	49		83.3	
	C(a)	78		86.9	
	C not clear	3		-	
II	A	10	138	80.0	75.1
	B	15		93.3	
	C(b)	31		60.7	
	C(1)	3		66.7	
	C(2)	38		76.0	
	C(a)	38		78.2	
	C not clear	3		-	
III	A	20	455	58.2	46.1
	B	60		63.3	
	C	375		42.6	
IV		133		31.0	
Neoadjuvant Chemotherapy		85		33.9	
Unknown		1		-	
Total		1,294		-	

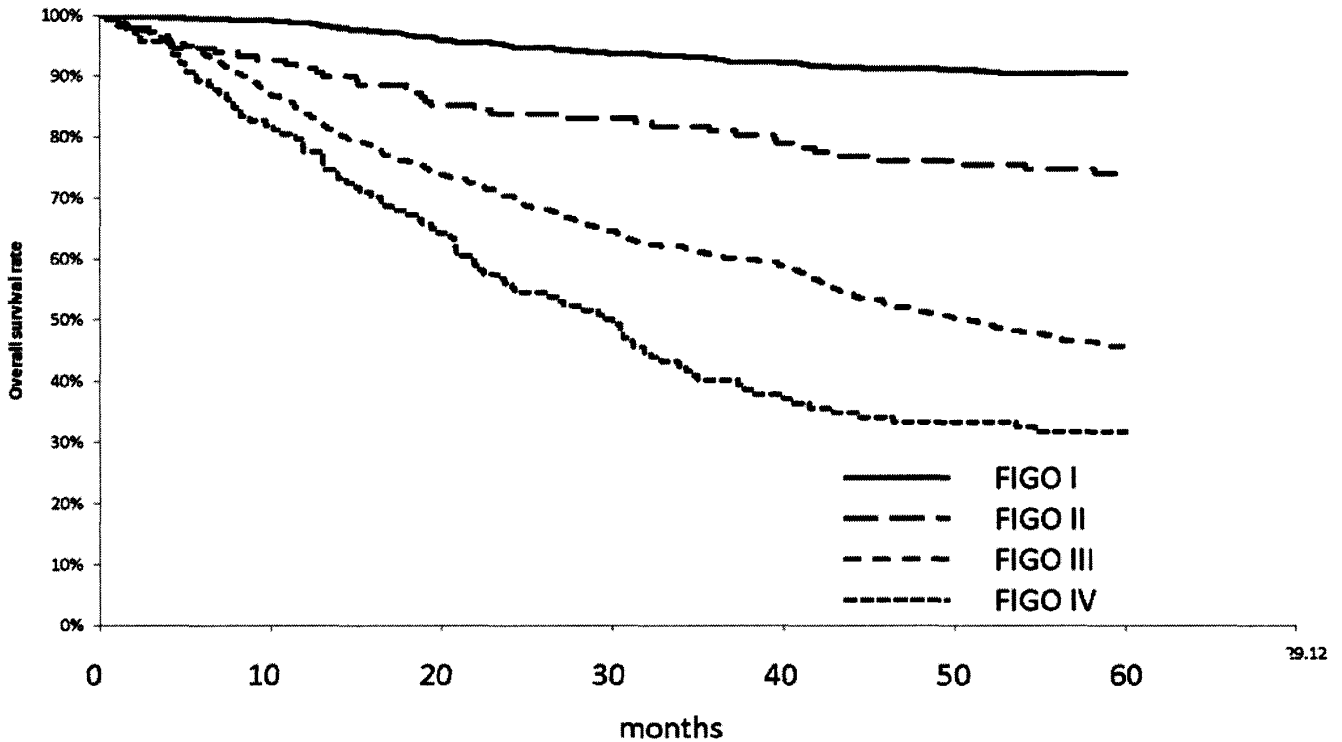
Table 5. 5-Year Survival by Histology, Treatment Started in 2002

Stage and Histological Type	FIGO Stage	Patients treated	5-year survival
		No.	%
Sex Cord/Stromal Tumors	I	3	66.7
	II	1	100.0
	III	0	0.0
	IV	0	0.0
Germ Cell Tumors	I	35	94.2
	II	5	80.0
	III	11	40.4
	IV	7	42.9
Immature Teratoma (G3)	I	8	100.0
	II	0	0.0
	III	1	100.0
	IV	1	0.0
Dysgerminoma	I	8	100.0
	II	0	0.0
	III	2	50.0
	IV	0	0.0
Yolk Sac Tumor	I	6	100.0
	II	2	100.0
	III	0	0.0
	IV	2	100.0

Table 6. 5-Year Survival by Stage and Histological Type, Treatment Started in 2002

FIGO Stage	Histology	Patients treated		5-year survival
		No.	%	%
I	Serous	74	5.7	92.8
	Mucinous	129	10.0	91.1
	Endometrioid	102	7.9	89.5
	Clear	156	12.1	88.4
	Other	21	1.6	95.0
II	Serous	40	3.1	81.9
	Mucinous	17	1.3	82.4
	Endometrioid	36	2.8	74.9
	Clear	33	2.6	66.3
	Other	12	0.9	66.7
III	Serous	289	22.3	49.1
	Mucinous	29	2.2	28.6
	Endometrioid	52	4.0	53.8
	Clear	50	3.9	28.6
	Other	35	2.7	49.1
IV	Serous	84	6.5	26.9
	Mucinous	7	0.5	57.1
	Endometrioid	16	1.2	50.0
	Clear	13	1.0	30.8
	Other	13	1.0	18.5
Neoadjuvant Chemotherapy	Serous	63	4.9	37.3
	Mucinous	6	0.5	44.4
	Endometrioid	7	0.5	25.7
	Clear	4	0.3	25.0
	Other	5	0.4	0.0
Unknown	Serous	0	0.0	-
	Mucinous	0	0.0	-
	Endometrioid	0	0.0	-
	Clear	0	0.0	-
	Other	1	0.1	-

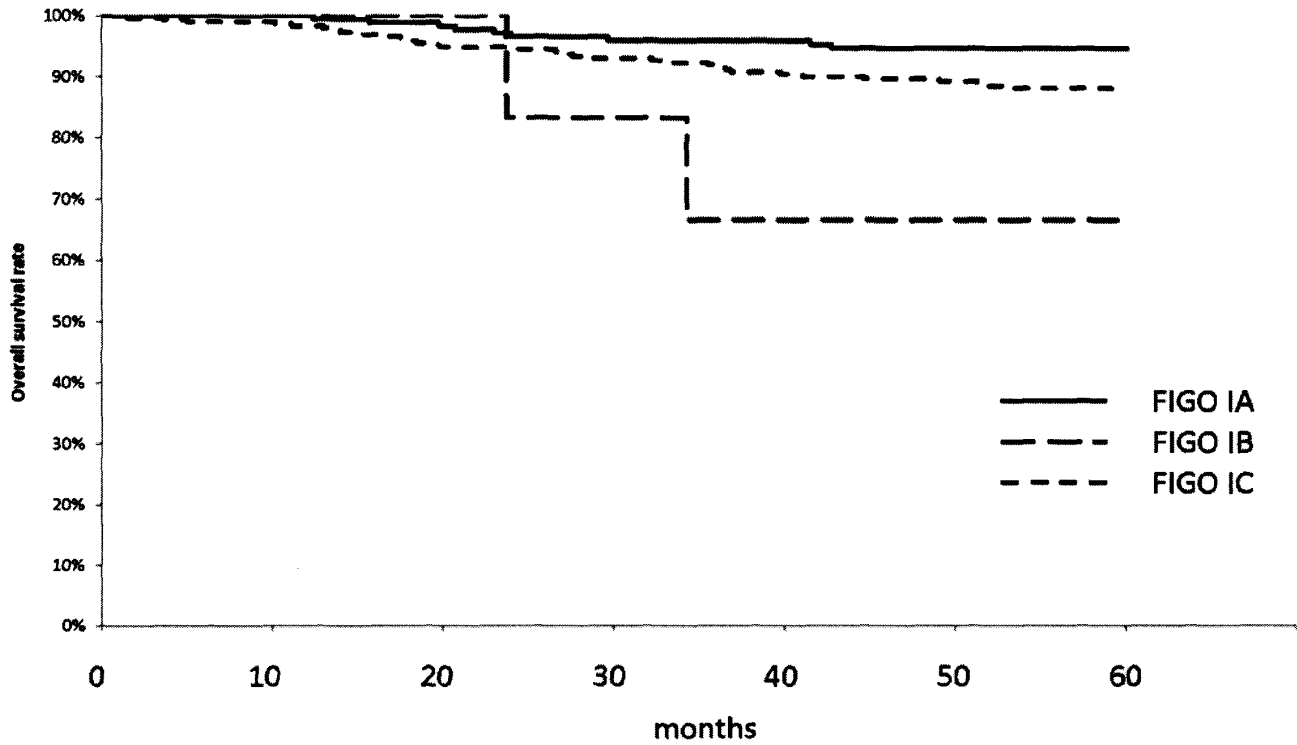
Fig. 1 Kaplan-Meier Estimated Overall Survival Curves of Ovarian Carcinoma Patients (Surface Epithelial-Stromal Tumors) by FIGO Stage, Treatment Started in 2002



Test of Equality over Strata			
Test	Chi-Square	DF	Pr > Chi-Square
Log-rank	288.6929	3	<.0001
Wilcoxon	275.6316	3	<.0001

Adjustment for Multiple Comparisons for the Log-rank Test				
Strata Comparison		Chi-Square	p-Values	
FIGO Stage	FIGO Stage		Raw	Tukey-Kramer
I	II	82.1177	<.0001	<.0001
I	III	188.9	<.0001	<.0001
I	IV	245.3	<.0001	<.0001
II	III	83.5933	<.0001	<.0001
II	IV	63.7336	<.0001	<.0001
III	IV	15.1568	<.0001	0.0006

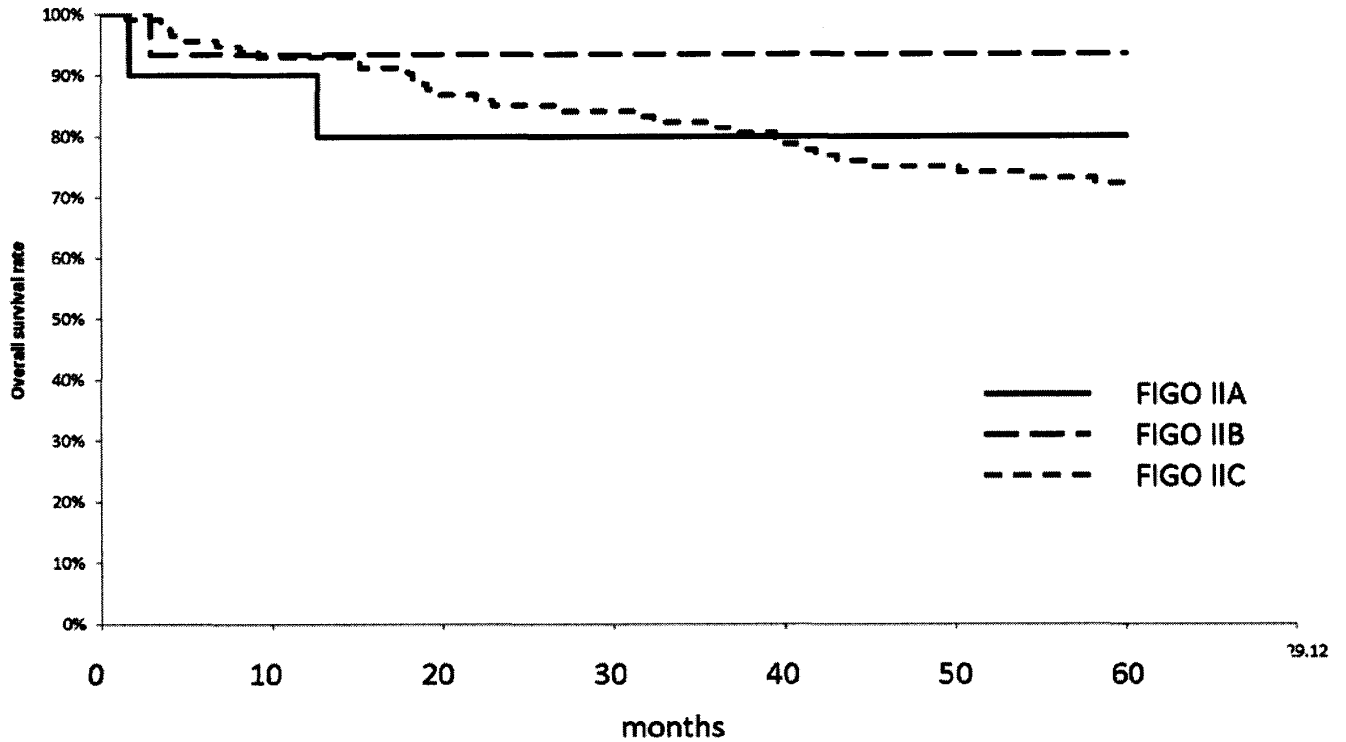
Fig. 2 Kaplan-Meier Estimated Overall Survival Curves of FIGO Stage I Ovarian Carcinoma Patients (Surface Epithelial-Stromal Tumors) by Substage, Treatment Started in 2002



Test of Equality over Strata			
Test	Chi-Square	DF	Pr > Chi-Square
Log-rank	9.1076	2	0.0105
Wilcoxon	8.8446	2	0.012

Adjustment for Multiple Comparisons for the Log-rank Test				
Strata Comparison		Chi-Square	p-Values	
FIGO Stage	FIGO Stage		Raw	Tukey-Kramer
IA	IB	7.3949	0.0065	0.018
IA	IC	4.6441	0.0312	0.0791
IB	IC	1.8953	0.1686	0.3531

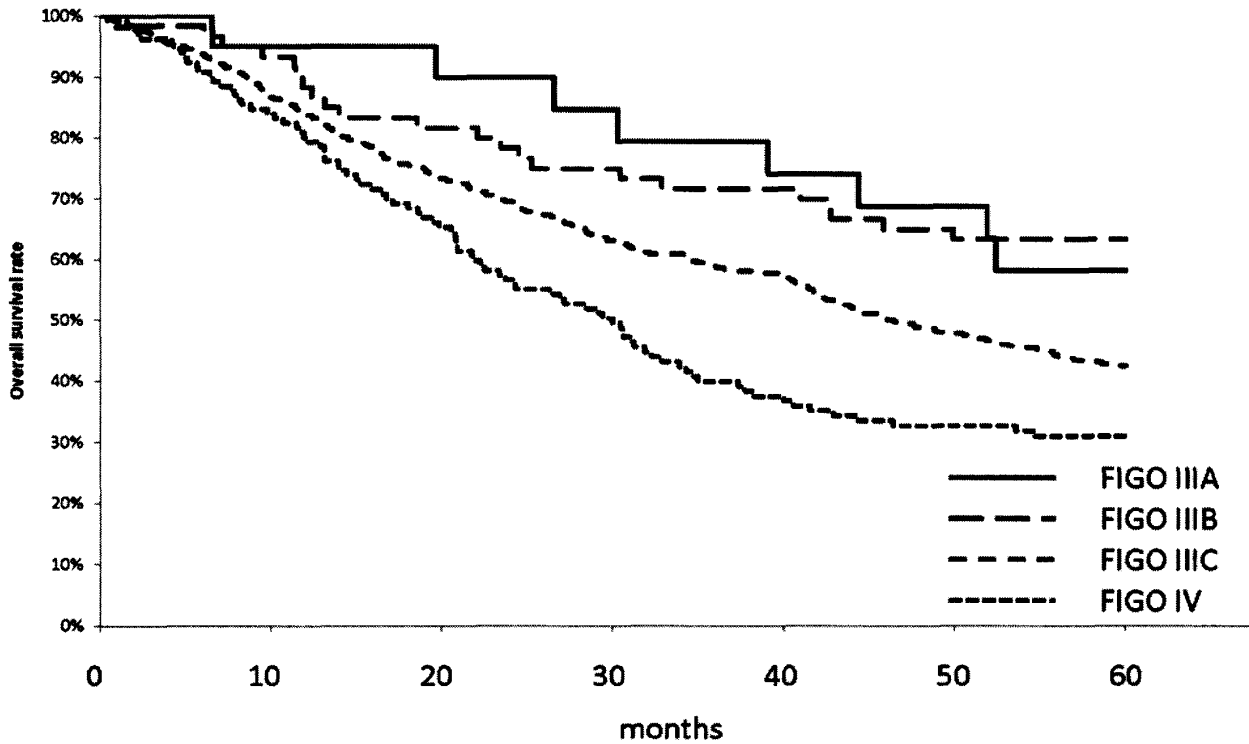
Fig. 3 Kaplan-Meier Estimated Overall Survival Curves of FIGO Stage II Ovarian Carcinoma Patients (Surface Epithelial-Stromal Tumors) by Substage, Treatment Started in 2002



Test of Equality over Strata			
Test	Chi-Square	DF	Pr > Chi-Square
Log-rank	2.7278	2	0.2557
Wilcoxon	2.3612	2	0.3071

Adjustment for Multiple Comparisons for the Log-rank Test				
Strata Comparison		Chi-Square	p-Values	
FIGO Stage	FIGO Stage		Raw	Tukey-Kramer
IIA	IIB	1.0871	0.2971	0.5499
IIA	IIC	1.2579	0.262	0.5007
IIB	IIC	2.68	0.1016	0.23

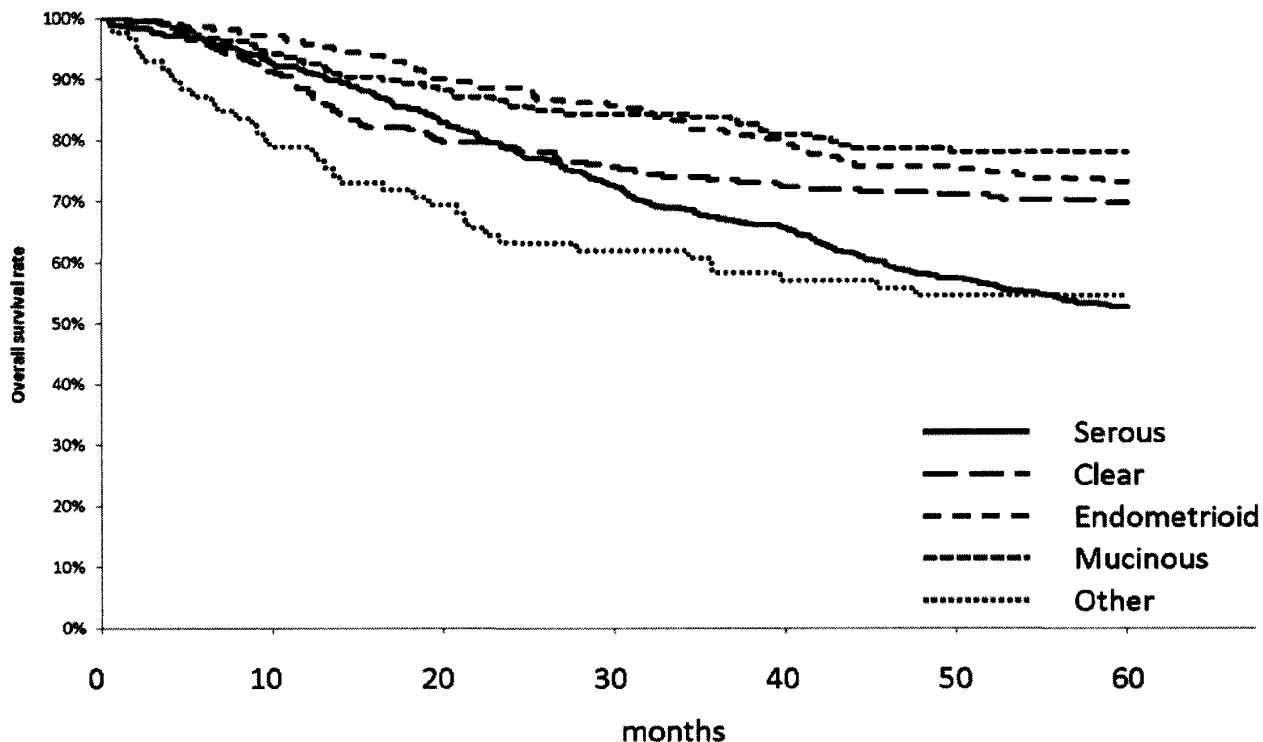
Fig. 4 Kaplan-Meier Estimated Overall Survival Curves of FIGO Stage III and IV Ovarian Carcinoma Patients (Surface Epithelial-Stromal Tumors) by Substage, Treatment Started in 2002



Test of Equality over Strata			
Test	Chi-Square	DF	Pr > Chi-Square
Log-rank	21.7048	3	<.0001
Wilcoxon	20.9728	3	0.0001

Adjustment for Multiple Comparisons for the Log-rank Test				
Strata Comparison		Chi-Square	p-Values	
FIGO Stage	FIGO Stage		Raw	Tukey-Kramer
IIIA	IIIB	2.8431	0.0918	0.331
IIIA	IIIC	0.1058	0.7449	0.9881
IIIA	IV	14.9729	0.0001	0.0006
IIIB	IIIC	1.482	0.2235	0.6158
IIIB	IV	19.4846	<.0001	<.0001
IIIC	IV	4.0133	0.0451	0.1867

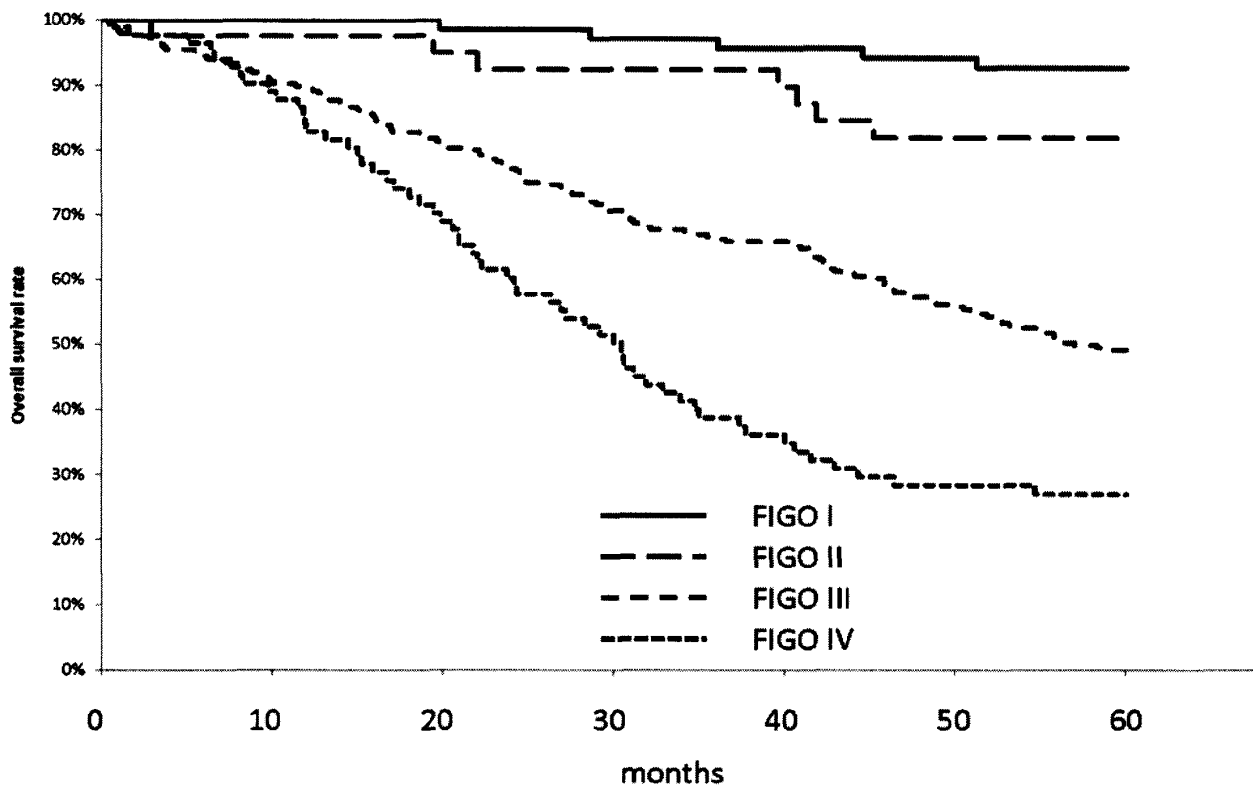
Fig. 5 Kaplan-Meier Estimated Overall Survival Curves of Ovarian Carcinoma Patients (Surface Epithelial-Stromal Tumors) by Histological Type, Treatment Started in 2002



Test of Equality over Strata			
Test	Chi-Square	DF	Pr > Chi-Square
Log-rank	51.5596	4	<.0001
Wilcoxon	46.8487	4	<.0001

Adjustment for Multiple Comparisons for the Log-rank Test				
Strata Comparison		Chi-Square	p-Values	
Histological Type	Histological Type		Raw	Tukey-Kramer
clear	endometrioid	0.8408	0.3592	0.8905
clear	mucinous	1.6811	0.1948	0.6933
clear	other	7.0732	0.0078	0.0601
clear	serous	22.8539	<.0001	<.0001
endometrioid	mucinous	0.1272	0.7213	0.9965
endometrioid	other	15.4791	<.0001	0.0008
endometrioid	serous	32.0256	<.0001	<.0001
mucinous	other	20.8334	<.0001	<.0001
mucinous	serous	37.7168	<.0001	<.0001
other	serous	15.5049	<.0001	0.0008

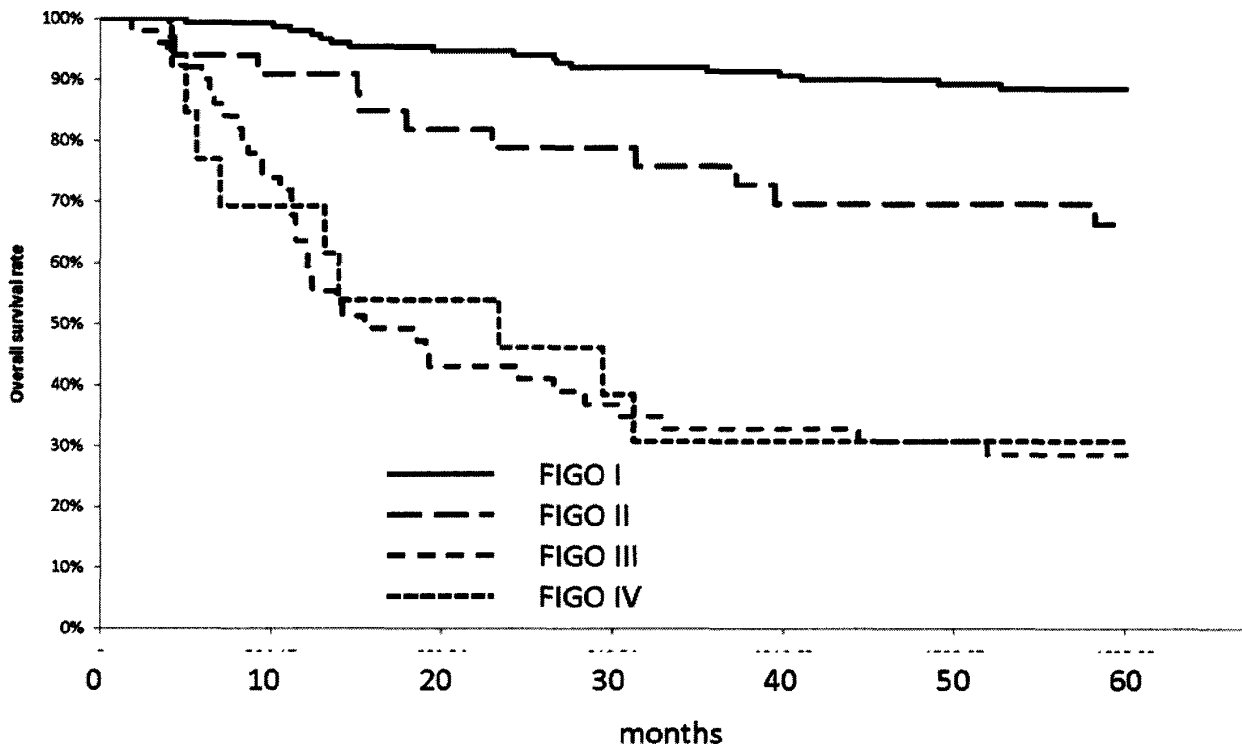
Fig. 6 Kaplan-Meier Estimated Overall Survival Curves of Serous Ovarian Carcinoma Patients by FIGO Stage, Treatment Started in 2002



Test of Equality over Strata			
Test	Chi-Square	DF	Pr > Chi-Square
Log-rank	83.2735	3	<.0001
Wilcoxon	79.5554	3	<.0001

Adjustment for Multiple Comparisons for the Log-rank Test				
Strata Comparison		Chi-Square	p-Values	
FIGO Stage	FIGO Stage		Raw	Tukey-Kramer
I	II	8.0053	0.0047	0.0241
I	III	22.7906	<.0001	<.0001
I	IV	70.0408	<.0001	<.0001
II	III	11.3928	0.0007	0.0041
II	IV	44.6909	<.0001	<.0001
III	IV	1.5844	0.2081	0.5893

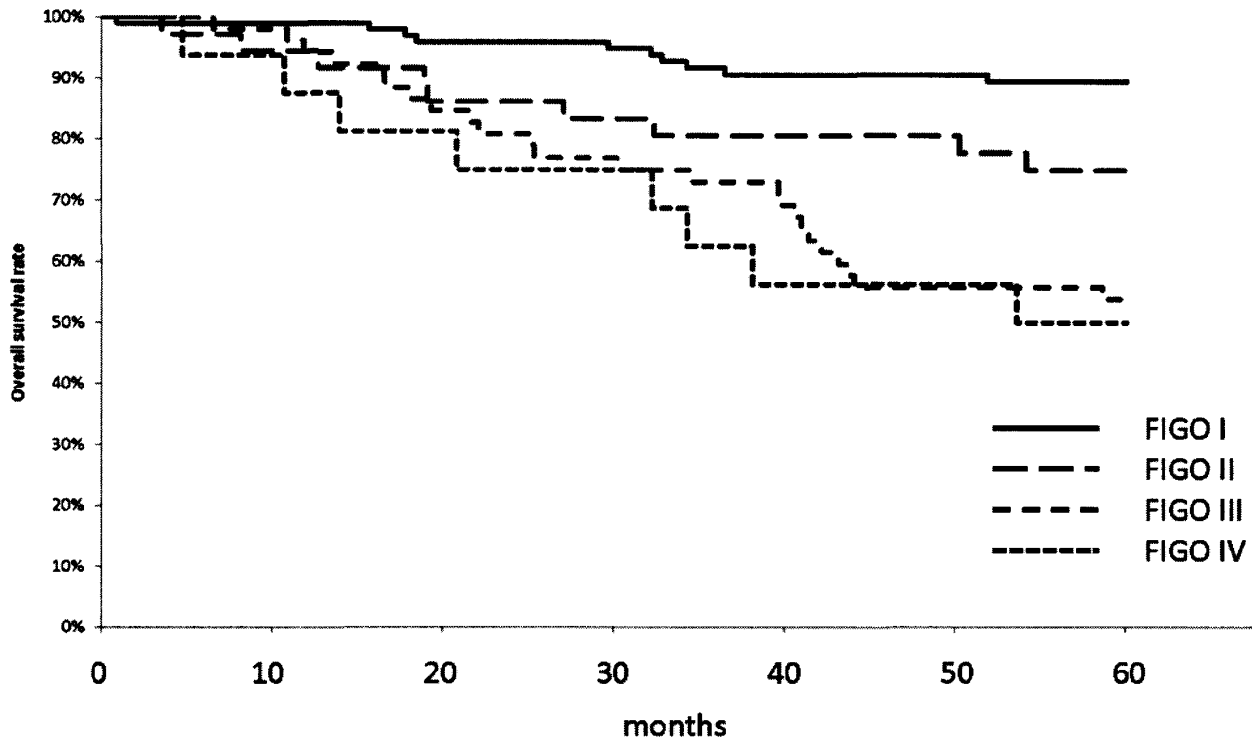
Fig. 7 Kaplan-Meier Estimated Overall Survival Curves of Clear Cell Ovarian Carcinoma Patients by FIGO Stage, Treatment Started in 2002



Test of Equality over Strata			
Test	Chi-Square	DF	Pr > Chi-Square
Log-rank	102.9255	3	<.0001
Wilcoxon	102.9477	3	<.0001

Adjustment for Multiple Comparisons for the Log-rank Test				
Strata Comparison		Chi-Square	p-Values	
FIGO Stage	FIGO Stage		Raw	Tukey-Kramer
I	II	30.919	<.0001	<.0001
I	III	90.7045	<.0001	<.0001
I	IV	71.3833	<.0001	<.0001
II	III	29.4639	<.0001	<.0001
II	IV	2.2617	0.1326	0.4351
III	IV	30.3089	<.0001	<.0001

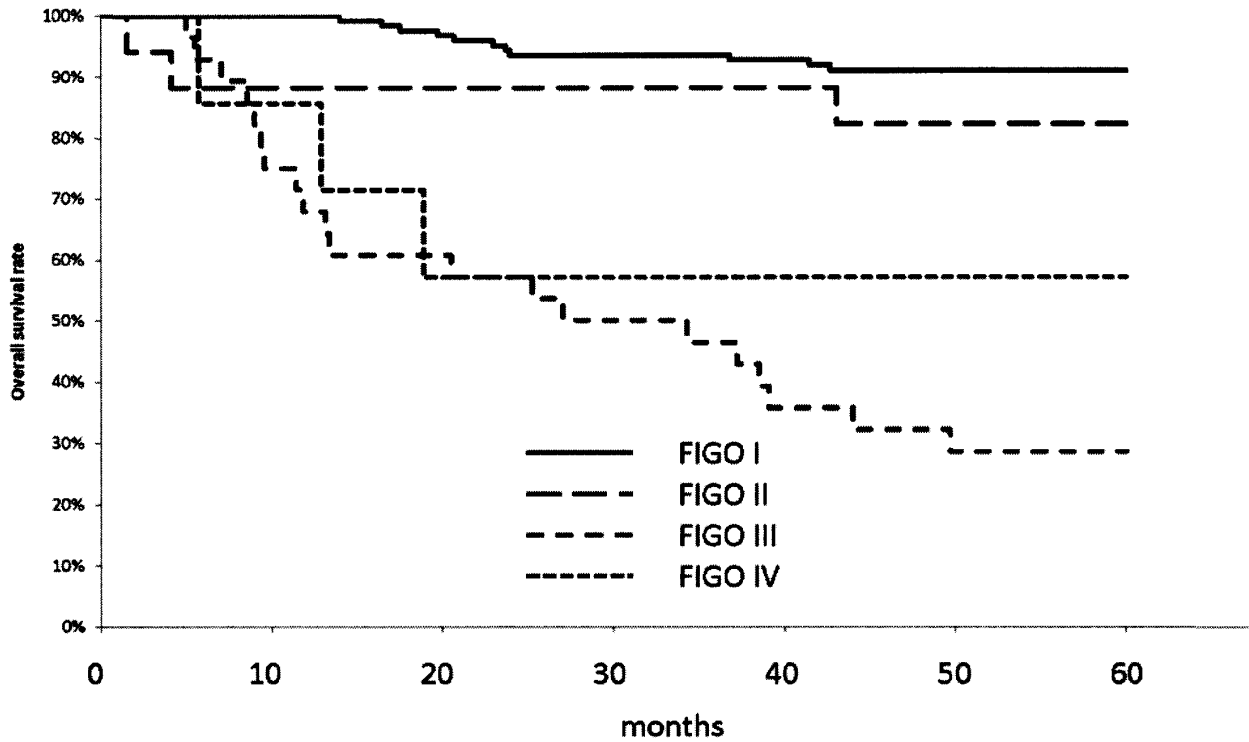
Fig. 8 Kaplan-Meier Estimated Overall Survival Curves of Endometrioid Ovarian Carcinoma Patients by FIGO Stage, Treatment Started in 2002



Test of Equality over Strata			
Test	Chi-Square	DF	Pr > Chi-Square
Log-rank	28.4188	3	<.0001
Wilcoxon	26.9568	3	<.0001

Adjustment for Multiple Comparisons for the Log-rank Test				
Strata Comparison		Chi-Square	p-Values	
FIGO Stage	FIGO Stage		Raw	Tukey-Kramer
I	II	9.0008	0.0027	0.0144
I	III	23.5398	<.0001	<.0001
I	IV	22.8131	<.0001	<.0001
II	III	6.9784	0.0082	0.0411
II	IV	1.8661	0.1719	0.5207
III	IV	3.9021	0.0482	0.1973

Fig. 9 Kaplan-Meier Estimated Overall Survival Curves of Mucinous Ovarian Carcinoma Patients by FIGO Stage, Treatment Started in 2002



Test of Equality over Strata			
Test	Chi-Square	DF	Pr > Chi-Square
Log-rank	75.3306	3	<.0001
Wilcoxon	73.0594	3	<.0001

Adjustment for Multiple Comparisons for the Log-rank Test				
Strata Comparison		Chi-Square	p-Values	
FIGO Stage	FIGO Stage		Raw	Tukey-Kramer
I	II	18.1679	<.0001	0.0001
I	III	66.0884	<.0001	<.0001
I	IV	37.8911	<.0001	<.0001
II	III	35.4587	<.0001	<.0001
II	IV	1.2467	0.2642	0.6793
III	IV	39.2864	<.0001	<.0001

卵巣境界悪性腫瘍治療成績

Statement for the Year 2002, Inclusive, Borderline Ovarian Tumor

Table A. 5-Year Results, Stage I-IV

	A	B	C	D	E	F	G	H	I	J	K
	Institution	Total No. Treated	no description	Alive with no Evidence of the Disease	Alive with Carcinoma	Alive with or without Carcinoma Unknown	Died of Carcinoma	Died of Other Malignant Tumor	Died of Intercurrent Disease	Cause of Death Unknown	Lost to follow-up
○	3 TOHOKU UNIV.	4	0	4	0	0	0	0	0	0	0
	4 FUKUSHIMA MED. UNIV.	8	8	0	0	0	0	0	0	0	0
	5 KANAZAWA UNIV.	2	0	1	0	0	0	0	0	0	1
○	6 OSAKA NATIONAL HOSP.	9	0	9	0	0	0	0	0	0	0
○	7 GIFU UNIV.	2	0	1	0	0	1	0	0	0	0
	9 NIPPON MED. SCH.	3	2	0	0	0	0	0	0	0	1
○	10 NAGASAKI UNIV.	2	0	2	0	0	0	0	0	0	0
	11 RED CROSS MED. CENTER	1	0	0	0	0	0	0	0	0	1
○	15 KEIO UNIV.	13	0	10	0	0	0	0	1	0	2
○	16 KYUSHU UNIV.	8	0	7	0	0	0	0	0	0	1
	17 TOKYO UNIV.	7	7	0	0	0	0	0	0	0	0
	18 JIKEI UNIV.	9	9	0	0	0	0	0	0	0	0
	19 CANCER INST. HOSP.	8	0	5	1	0	0	0	0	0	2
	21 NIIGATA UNIV.	4	4	0	0	0	0	0	0	0	0
	22 OKAYAMA UNIV.	2	2	0	0	0	0	0	0	0	0
	23 HIROSHIMA RED CROSS HOSP.	2	0	0	0	0	0	0	0	0	2
○	25 HIROSAKI UNIV.	5	0	5	0	0	0	0	0	0	0
○	26 SENDAI MED. CENTER	2	0	0	2	0	0	0	0	0	0
○	27 KURUME UNIV.	2	0	2	0	0	0	0	0	0	0
○	29 JUNTENDO UNIV.	8	0	8	0	0	0	0	0	0	0
○	32 KAGOSHIMA UNIV.	12	0	9	0	0	1	0	0	0	2
○	33 HOKKAIDO UNIV.	5	0	4	0	0	1	0	0	0	0
	34 TOKYO MED. DENT. UNIV.	3	3	0	0	0	0	0	0	0	0
	35 MIYAZAKI PREF. HOSP.	14	0	6	0	0	0	0	0	0	8
	40 MITUI MEMORIAL HOSP.	2	2	0	0	0	0	0	0	0	0
	41 SAPPORO MED. UNIV.	2	0	1	0	0	0	0	0	0	1
	42 WAKAYAMA RED CROSS HOSP.	9	0	5	0	0	0	0	0	0	4
	44 OSAKA UNIV.	8	8	0	0	0	0	0	0	0	0
○	47 NAGOYA UNIV.	4	0	4	0	0	0	0	0	0	0
○	48 NAGOYA CITY UNIV.	3	0	3	0	0	0	0	0	0	0
	49 KURASHIKI CENTRAL HOSP.	4	0	2	0	0	1	0	0	0	1
	50 OKAYAMA RED CROSS HOSP.	1	1	0	0	0	0	0	0	0	0
○	56 MIE UNIV.	5	0	5	0	0	0	0	0	0	0
○	57 KANAZAWA MED. CENTER	1	0	0	0	0	1	0	0	0	0
○	58 NTT MED. CENTER TOKYO	2	0	2	0	0	0	0	0	0	0
	59 KOBE CITY MED. CENTER GENERAL HOSP.	1	0	0	0	0	0	0	0	0	1
	61 YOKOHAMA CITY UNIV.	7	0	5	0	0	0	0	0	0	2
○	63 TOTTORI UNIV.	4	0	3	0	0	1	0	0	0	0
	67 HIROSHIMA UNIV.	4	4	0	0	0	0	0	0	0	0
○	68 YAMAGUCHI UNIV.	2	0	2	0	0	0	0	0	0	0
○	69 TOYOOKA PUBLIC HOSP.	1	0	1	0	0	0	0	0	0	0
○	70 GUNMA UNIV.	3	0	3	0	0	0	0	0	0	0
○	77 CHIBA UNIV.	4	0	4	0	0	0	0	0	0	0
	79 KANSAI MED. UNIV.	9	0	3	1	0	0	0	1	0	4
○	82 YAMAGUCHI RED CROSS HOSP.	2	0	2	0	0	0	0	0	0	0
	85 NAGOYA MED. CENTER	5	2	0	0	0	0	0	0	0	3
○	89 NIHON UNIV.	3	0	3	0	0	0	0	0	0	0
	90 RED CROSS NAGOYA DAICHI HOSP.	7	0	4	0	0	0	0	0	0	3
	92 NATIONAL CENTER FOR GLOBAL HEALTH AND MED.	2	2	0	0	0	0	0	0	0	0
○	94 KUMAMOTO MED. CENTER	1	0	0	0	0	0	1	0	0	0
○	96 OSAKA MED. COLL.	5	0	4	0	0	0	0	0	0	1

	A	B	C	D	E	F	G	H	I	J	K
	Institution	Total No. Treated	no description	Alive with no Evidence of the Disease	Alive with Carcinoma	Alive with or without Carcinoma Unknown	Died of Carcinoma	Died of Other Malignant Tumor	Died of Intercurrent Disease	Cause of Death Unknown	Lost to follow-up
○	182 NATIONAL DEFENSE MED. COLL.	9	0	7	0	0	1	0	0	0	1
	183 KOCHI UNIV.	1	1	0	0	0	0	0	0	0	0
○	184 KYOTO 2ND RED CROSS HOSP.	1	0	1	0	0	0	0	0	0	0
○	185 SAGA UNIV.	1	0	1	0	0	0	0	0	0	0
	186 NAGAOKA RED CROSS HOSP.	1	0	0	0	0	0	0	0	0	1
	187 EHIME UNIV.	1	1	0	0	0	0	0	0	0	0
	189 TEIKYO UNIV.	2	0	1	0	0	0	0	0	0	1
	190 HIMEJI MED. CENTER	3	0	1	0	0	0	0	0	0	2
	195 TOKYO METRO. TAMA MED. CENTER	2	2	0	0	0	0	0	0	0	0
	196 YAMAGATA UNIV.	5	5	0	0	0	0	0	0	0	0
○	197 YOKKAICHI MUNI. HOSP.	3	0	3	0	0	0	0	0	0	0
	198 UNIV. OF YAMANASHI	6	0	4	0	0	0	0	0	0	2
	199 FUKUI UNIV.	2	2	0	0	0	0	0	0	0	0
○	200 SASEBO KYOSAI HOSP.	7	0	6	0	0	0	0	1	0	0
	202 SAITAMA MED. CENTER	8	8	0	0	0	0	0	0	0	0
	203 TOCHIGI CANCER CENTER	1	1	0	0	0	0	0	0	0	0
○	204 NIPPON MED. SCH. TAMA NAGAYAMA HOSP.	1	0	1	0	0	0	0	0	0	0
	206 OSAKA ROUSAI HOSP.	2	2	0	0	0	0	0	0	0	0
	207 OSAKA CITY GENERAL HOSP.	2	2	0	0	0	0	0	0	0	0
○	208 SIMANE PREF. CENTRAL HOSP.	3	0	1	0	0	2	0	0	0	0
	211 SAPPORO-KOUSEI GENERAL HOSP.	5	5	0	0	0	0	0	0	0	0
	214 MATSUMOTO MED. CENTER	2	1	0	0	0	0	0	0	0	1
	215 YAMADA RED CROSS HOSP.	1	0	0	0	0	0	0	0	0	1
○	216 FUKUOKA RED CROSS HOSP.	3	0	3	0	0	0	0	0	0	0
	217 MUSASHINO RED CROSS HOSP.	2	1	0	0	0	1	0	0	0	0
○	219 SHIGA UNIV. OF MED. SCIENCE	1	0	1	0	0	0	0	0	0	0
○	220 ISEHARA KYODO HOSP.	1	0	1	0	0	0	0	0	0	0
	222 KUSHIRO ROUSAI HOSP.	2	2	0	0	0	0	0	0	0	0
	223 TOTTORI PREF. CENTRAL HOSP.	1	0	0	0	0	0	0	0	0	1
○	225 ASHIKAGA RED CROSS HOSP.	1	0	1	0	0	0	0	0	0	0
○	228 NAGANO MUNI. HOSP.	3	0	2	0	0	0	0	1	0	0
	230 SAGA PREF. HOSP. KOSEIKAN	3	3	0	0	0	0	0	0	0	0
○	232 TOYAMA RED CROSS HOSP.	6	0	6	0	0	0	0	0	0	0
	233 HIROSHIMA PREF. HOSP.	6	6	0	0	0	0	0	0	0	0
	234 SHONAN KAMAKURA GENERAL HOSP.	1	0	0	0	0	0	0	0	0	1
	235 UNIV. OCCUPATIONAL & ENVIRONMENTAL HEALTH	6	0	1	0	0	2	0	0	0	3
	236 KOSHIGAYA MUNI. HOSP.	4	4	0	0	0	0	0	0	0	0
	238 OHITA UNIV.	3	0	2	0	0	0	0	0	0	1
	239 TOYOHASHI MUNI. HOSP.	3	0	1	0	0	0	0	0	0	2
	240 HYOGO PREF.KAKOGAWA MED. CENTER	2	2	0	0	0	0	0	0	0	0
	503 HACHINOHE CITY HOSP.	4	4	0	0	0	0	0	0	0	0
	504 MIMURO HOSP.	2	0	1	0	0	0	0	0	0	1
	506 OGAKI MUNI. HOSP.	6	6	0	0	0	0	0	0	0	0
○	507 FUJI CITY GENERAL HOSP.	4	0	4	0	0	0	0	0	0	0
	510 KURE KYOSAI HOSP.	5	4	0	0	0	0	1	0	0	0
○	513 KANTO ROSAI HOSP.	1	0	1	0	0	0	0	0	0	0
○	515 TOKAI UNIV.	1	0	1	0	0	0	0	0	0	0
	516 ASAHI CENTRAL HOSP.	3	0	2	0	0	0	0	0	0	1
○	517 YOKOHAMA MUNI. HOSP.	1	0	1	0	0	0	0	0	0	0
○	518 YOKOHAMA MINAMI KYOSAI HOSP.	2	0	1	0	0	1	0	0	0	0
	519 KYOTO KATURA HOSP.	1	1	0	0	0	0	0	0	0	0
	520 JIKEI UNIV. KASHIWA HOSP.	13	12	0	0	0	0	0	0	0	1
	526 JIKEI UNIV. AOTO HOSP.	5	0	2	0	0	0	0	0	0	3
	Total	615	188	303	7	1	15	4	6	1	90

Table 1. No. of Patients by Stage and Age

FIGO Stage	Age	No description		~19		20~29		30~39		40~49		50~59		60~69		70~79		80~		Total	
		No.	%	No.	%	No.	%	No.	%	No.	%	No.	%	No.	%	No.	%	No.	%	No.	%
I	A	0	0.0	14	2.3	58	9.4	73	11.9	62	10.1	94	15.3	44	7.2	62	10.1	21	3.4	428	69.6
	B	0	0.0	1	0.2	0	0.0	5	0.8	4	0.7	3	0.5	4	0.7	1	0.2	0	0.0	18	2.9
	C(b)	0	0.0	2	0.3	16	2.6	12	2.0	10	1.6	13	2.1	8	1.3	6	1.0	2	0.3	69	11.2
	C(1)	0	0.0	0	0.0	1	0.2	0	0.0	1	0.2	4	0.7	0	0.0	1	0.2	1	0.2	8	1.3
	C(2)	0	0.0	0	0.0	1	0.2	5	0.8	0	0.0	3	0.5	0	0.0	0	0.0	0	0.0	9	1.5
	C(a)	0	0.0	2	0.3	3	0.5	9	1.5	7	1.1	7	1.1	8	1.3	3	0.5	4	0.7	43	7.0
	C not clear	0	0.0	0	0.0	1	0.2	0	0.0	0	0.0	0	0.0	0	0.0	0	0.0	0	0.0	1	0.2
	total	0	0.0	19	3.1	80	13.0	104	16.9	84	13.7	124	20.2	64	10.4	73	11.9	28	4.6	576	93.7
II	A	0	0.0	0	0.0	0	0.0	0	0.0	0	0.0	0	0.0	0	0.0	0	0.0	0	0.0	0	0.0
	B	0	0.0	0	0.0	1	0.2	0	0.0	0	0.0	1	0.2	0	0.0	0	0.0	0	0.0	2	0.3
	C(b)	0	0.0	0	0.0	0	0.0	0	0.0	0	0.0	0	0.0	0	0.0	0	0.0	0	0.0	0	0.0
	C(1)	0	0.0	0	0.0	0	0.0	0	0.0	0	0.0	0	0.0	0	0.0	0	0.0	0	0.0	0	0.0
	C(2)	0	0.0	0	0.0	0	0.0	1	0.2	0	0.0	0	0.0	0	0.0	1	0.2	0	0.0	2	0.3
	C(a)	0	0.0	0	0.0	0	0.0	0	0.0	0	0.0	0	0.0	0	0.0	0	0.0	1	0.2	1	0.2
	C not clear	0	0.0	0	0.0	0	0.0	0	0.0	0	0.0	0	0.0	0	0.0	0	0.0	0	0.0	0	0.0
	total	0	0.0	0	0.0	1	0.2	1	0.2	0	0.0	1	0.2	0	0.0	1	0.2	1	0.2	5	0.8
III	A	0	0.0	1	0.2	0	0.0	1	0.2	1	0.2	1	0.2	0	0.0	0	0.0	0	0.0	4	0.7
	B	0	0.0	2	0.3	0	0.0	0	0.0	2	0.3	2	0.3	1	0.2	1	0.2	0	0.0	8	1.3
	C	0	0.0	0	0.0	2	0.3	2	0.3	2	0.3	5	0.8	2	0.3	2	0.3	0	0.0	15	2.4
	total	0	0.0	3	0.5	2	0.3	3	0.5	5	0.8	8	1.3	3	0.5	3	0.5	0	0.0	27	4.4
IV	0	0.0	0	0.0	0	0.0	0	0.0	0	0.0	1	0.2	3	0.5	2	0.3	1	0.2	7	1.1	
Neoadjuvant Chemotherapy	0	0.0	0	0.0	0	0.0	0	0.0	0	0.0	0	0.0	0	0.0	0	0.0	0	0.0	0	0.0	
Unknown	0	0.0	0	0.0	0	0.0	0	0.0	0	0.0	0	0.0	0	0.0	0	0.0	0	0.0	0	0.0	
Total	0	0.0	22	3.6	83	13.5	108	17.6	89	14.5	134	21.8	70	11.4	79	12.9	30	4.9	615	100.0	

Table 2. 5-Year Results, Treatment Started in 2002

5-year result	No. of patients	%
Alive with no Evidence of the Disease	230	87.5
Alive with Carcinoma	5	1.9
Alive with or without Carcinoma Unknown	1	0.4
Died of Carcinoma	11	4.2
Died of Other Malignant Tumor	3	1.1
Died of Intercurrent Disease	4	1.5
Cause of Death Unknown	1	0.4
Lost to follow-up	8	3.0
Total	263	

Table 3. 5-Year Survival by Stage, Treatment Started in 2002

FIGO Stage		Patients treated	
		No.	
I	A	182	245
	B	7	
	C(b)	25	
	C(1)	4	
	C(2)	7	
	C(a)	19	
	C not clear	1	
II	A	0	1
	B	1	
	C(b)	0	
	C(1)	0	
	C(2)	0	
	C(a)	0	
	C not clear	0	
III	A	2	14
	B	4	
	C	8	
IV		3	
Neoadjuvant Chemotherapy		0	
Unknown		0	
Total		263	

**Table 4. 5-Year Survival by Stage, Treatment Started in 2002
Surface Epithelial-Stromal Tumors**

FIGO Stage		Patients treated	
		No.	
I	A	139	188
	B	5	
	C(b)	19	
	C(1)	3	
	C(2)	6	
	C(a)	15	
	C not clear	1	
II	A	0	1
	B	1	
	C(b)	0	
	C(1)	0	
	C(2)	0	
	C(a)	0	
	C not clear	0	
III	A	2	12
	B	2	
	C	8	
IV		3	
Neoadjuvant Chemotherapy		0	
Unknown		0	
Total		204	

Table 5. 5-Year Survival by Histology, Treatment Started in 2002

Stage and Histological Type	FIGO Stage	Patients treated
		No.
Sex Cord/Stromal Tumors	I	32
	II	0
	III	1
	IV	0
Germ Cell Tumors	I	23
	II	0
	III	1
	IV	0
Immature Teratoma (G3)	I	0
	II	0
	III	0
	IV	0
Dysgerminoma	I	0
	II	0
	III	0
	IV	0
Yolk Sac Tumor	I	0
	II	0
	III	0
	IV	0

Table 6. 5-Year Survival by Stage and Histological Type, Treatment Started in 2002

FIGO Stage	Histology	Patients treated	
		No.	%
I	Serous	41	20.1
	Mucinous	139	68.1
	Endometrioid	1	0.5
	Clear	2	1.0
	Other	5	2.5
II	Serous	0	0.0
	Mucinous	1	0.5
	Endometrioid	0	0.0
	Clear	0	0.0
	Other	0	0.0
III	Serous	5	2.5
	Mucinous	7	3.4
	Endometrioid	0	0.0
	Clear	0	0.0
	Other	0	0.0
IV	Serous	1	0.5
	Mucinous	2	1.0
	Endometrioid	0	0.0
	Clear	0	0.0
	Other	0	0.0
Neoadjuvant Chemotherapy	Serous	0	0.0
	Mucinous	0	0.0
	Endometrioid	0	0.0
	Clear	0	0.0
	Other	0	0.0
Unknown	Serous	0	0.0
	Mucinous	0	0.0
	Endometrioid	0	0.0
	Clear	0	0.0
	Other	0	0.0